



**TRILOBITE
TESTING, INC.**

DRILL STEM TEST REPORT

Shakespeare Oil Co. Inc

16-14s-32w Logan Co. KS

202 W. Main St.
Salem IL 62881

Ottley #3-16

Job Ticket: 48836

DST#: 9

ATTN: Tim Priest

Test Start: 2012.08.28 @ 04:36:00

GENERAL INFORMATION:

Formation: **Mryic / Ft. Scott**

Deviated: No Whipstock: ft (KB)

Time Tool Opened: 06:47:25

Time Test Ended: 10:35:54

Test Type: Conventional Bottom Hole (Reset)

Tester: Will MacLean

Unit No: 40

Interval: 4250.00 ft (KB) To 4305.00 ft (KB) (TVD)

Reference Elevations: 2773.00 ft (KB)

Total Depth: 4305.00 ft (KB) (TVD)

2763.00 ft (CF)

Hole Diameter: 7.88 inches Hole Condition: Good

KB to GR/CF: 10.00 ft

Serial #: 8360

Inside

Press @ Run Depth: 26.19 psig @ 4251.00 ft (KB)

Capacity: 8000.00 psig

Start Date: 2012.08.28

End Date:

2012.08.28

Last Calib.:

2012.08.28

Start Time: 04:36:00

End Time:

10:35:54

Time On Btm:

2012.08.28 @ 06:46:25

Time Off Btm:

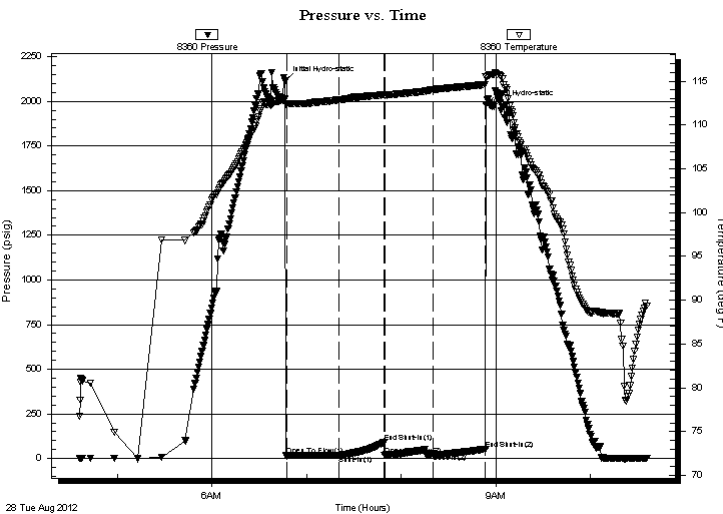
2012.08.28 @ 08:53:39

TEST COMMENT: IF- Weak Surface Blow Died in 17 min

IS- No Blow

FF- No Blow

FS- No Blow



PRESSURE SUMMARY

Time (Min.)	Pressure (psig)	Temp (deg F)	Annotation
0	2114.54	112.98	Initial Hydro-static
1	15.34	112.47	Open To Flow (1)
34	17.56	112.87	Shut-In(1)
63	91.34	113.45	End Shut-In(1)
63	18.93	113.42	Open To Flow (2)
94	26.19	114.02	Shut-In(2)
127	53.45	114.61	End Shut-In(2)
128	1982.65	115.46	Final Hydro-static

Recovery

Length (ft)	Description	Volume (bbl)
5.00	100% m with Oil Spots	0.02

Gas Rates

Choke (inches)	Pressure (psig)	Gas Rate (Mcf/d)

* Recovery from multiple tests



**TRILOBITE
TESTING, INC.**

DRILL STEM TEST REPORT

FLUID SUMMARY

Shakespeare Oil Co. Inc

16-14s-32w Logan Co. KS

202 W. Main St.
Salem IL 62881

Ottley #3-16

Job Ticket: 48836

DST#: 9

ATTN: Tim Priest

Test Start: 2012.08.28 @ 04:36:00

Mud and Cushion Information

Mud Type: Gel Chem

Cushion Type:

Oil API:

deg API

Mud Weight: 9.00 lb/gal

Cushion Length:

ft

Water Salinity:

ppm

Viscosity: 54.00 sec/qt

Cushion Volume:

bbl

Water Loss: 9.57 in³

Gas Cushion Type:

Resistivity: ohm.m

Gas Cushion Pressure:

psig

Salinity: 8000.00 ppm

Filter Cake: 1.00 inches

Recovery Information

Recovery Table

Length ft	Description	Volume bbl
5.00	100% m with Oil Spots	0.025

Total Length: 5.00 ft Total Volume: 0.025 bbl

Num Fluid Samples: 0

Num Gas Bombs: 0

Serial #:

Laboratory Name:

Laboratory Location:

Recovery Comments:

Serial #: 8360

Inside

Shakespeare Oil Co. Inc

Ottley #3-16

DST Test Number: 9

