



TRILOBITE TESTING, INC.

DRILL STEM TEST REPORT

Shakespeare Oil Co. Inc

16-14s-32w Logan Co. KS

202 W. Main St.
Salem IL 62881

Ottley # 3-16

Job Ticket: 48837

DST#: 10

ATTN: Tim Priest

Test Start: 2012.08.28 @ 23:28:00

GENERAL INFORMATION:

Formation: **Johnson**

Deviated: No Whipstock: ft (KB)

Time Tool Opened: 01:13:10

Time Test Ended: 06:13:39

Test Type: Conventional Bottom Hole (Reset)

Tester: Will MacLean

Unit No: 40

Interval: 4330.00 ft (KB) To 4380.00 ft (KB) (TVD)

Reference Elevations: 2773.00 ft (KB)

Total Depth: 4380.00 ft (KB) (TVD)

2763.00 ft (CF)

Hole Diameter: 7.88 inches Hole Condition: Good

KB to GR/CF: 10.00 ft

Serial #: 8360 Inside

Press @ Run Depth: 17.63 psig @ 4331.00 ft (KB)

Capacity: 8000.00 psig

Start Date: 2012.08.28

End Date:

2012.08.29

Last Calib.:

2012.08.29

Start Time: 23:28:00

End Time:

06:13:39

Time On Btm:

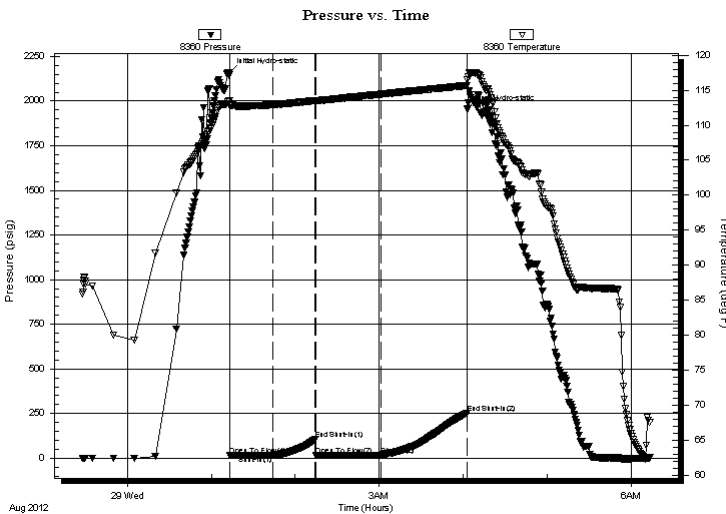
2012.08.29 @ 01:12:55

Time Off Btm:

2012.08.29 @ 04:03:09

TEST COMMENT: IF- Weak Surface Blow
IS- No Blow
FF- Weak Surface Blow Died in 7min
FS- No Blow

PRESSURE SUMMARY



Time (Min.)	Pressure (psig)	Temp (deg F)	Annotation
0	2160.85	113.52	Initial Hydro-static
1	15.90	112.79	Open To Flow (1)
31	15.05	112.91	Shut-In(1)
61	103.48	113.51	End Shut-In(1)
62	15.78	113.49	Open To Flow (2)
109	17.63	114.43	Shut-In(2)
170	252.94	115.66	End Shut-In(2)
171	1955.19	116.48	Final Hydro-static

Recovery

Length (ft)	Description	Volume (bbl)
3.00	GOCM 3%g 28%oil 69%m	0.01
2.00	GO 2%g 98%oil	0.01

* Recovery from multiple tests

Gas Rates

Choke (inches)	Pressure (psig)	Gas Rate (Mcf/d)



**TRILOBITE
TESTING, INC.**

DRILL STEM TEST REPORT

FLUID SUMMARY

Shakespeare Oil Co. Inc

16-14s-32w Logan Co. KS

202 W. Main St.
Salem IL 62881

Ottley # 3-16

Job Ticket: 48837

DST#: 10

ATTN: Tim Priest

Test Start: 2012.08.28 @ 23:28:00

Mud and Cushion Information

Mud Type: Gel Chem

Cushion Type:

Oil API:

deg API

Mud Weight: 9.00 lb/gal

Cushion Length:

ft

Water Salinity:

ppm

Viscosity: 61.00 sec/qt

Cushion Volume:

bbf

Water Loss: 10.38 in³

Gas Cushion Type:

Resistivity: ohm.m

Gas Cushion Pressure:

psig

Salinity: 8400.00 ppm

Filter Cake: 1.00 inches

Recovery Information

Recovery Table

Length ft	Description	Volume bbf
3.00	GOCM 3%g 28%oil 69%m	0.015
2.00	GO 2%g 98%oil	0.010

Total Length: 5.00 ft Total Volume: 0.025 bbf

Num Fluid Samples: 0

Num Gas Bombs: 0

Serial #:

Laboratory Name:

Laboratory Location:

Recovery Comments:

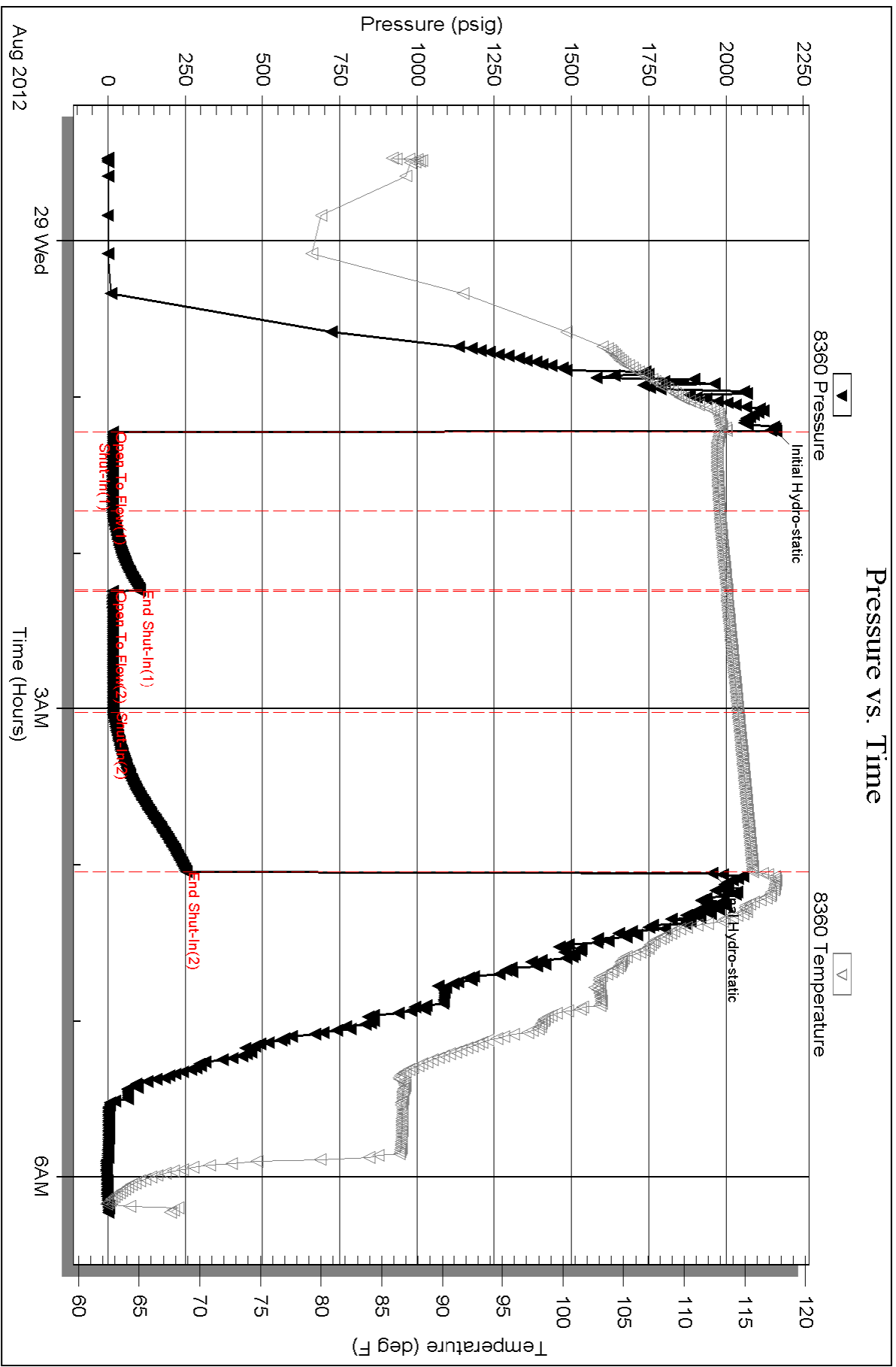
Serial #: 8360

Inside

Shakespeare Oil Co. Inc

Oilley # 3-16

DST Test Number: 10



Triobite Testing, Inc

Ref. No: 48837

Printed: 2012.08.29 @ 07:47:07