



## DRILL STEM TEST REPORT

Prepared For: **TDI,Inc.**

1310 Bison Rd  
Hays KS 67601

ATTN: Herb Deines

### **Rohr-Schmeidler #1**

### **32-14s-18w Ellis,KS**

Start Date: 2012.06.29 @ 06:00:00

End Date: 2012.06.29 @ 15:53:30

Job Ticket #: 49264                      DST #: 1

Trilobite Testing, Inc  
PO Box 362 Hays, KS 67601  
ph: 785-625-4778 fax: 785-625-5620

Printed: 2012.07.06 @ 09:17:05

TDI,Inc. 32-14s-18w Ellis,KS Rohr-Schmeidler #1 DST # 1 KC" A-D" 2012.06.29



**TRILOBITE TESTING, INC.**

# DRILL STEM TEST REPORT

TDI, Inc.  
 1310 Bison Rd  
 Hays KS 67601  
 ATTN: Herb Deines

**32-14s-18w Ellis, KS**  
**Rohr-Schmeidler #1**  
 Job Ticket: 49264 **DST#: 1**  
 Test Start: 2012.06.29 @ 06:00:00

## GENERAL INFORMATION:

Formation: **KC" A-D"**  
 Deviated: No Whipstock: ft (KB)  
 Test Type: Conventional Bottom Hole (Initial)  
 Time Tool Opened: 09:47:00 Tester: Brett Dickinson  
 Time Test Ended: 15:53:30 Unit No: 59  
 Interval: **3304.00 ft (KB) To 3380.00 ft (KB) (TVD)** Reference Elevations: 2049.00 ft (KB)  
 Total Depth: 3380.00 ft (KB) (TVD) 2041.00 ft (CF)  
 Hole Diameter: 7.88 inches Hole Condition: KB to GR/CF: 8.00 ft

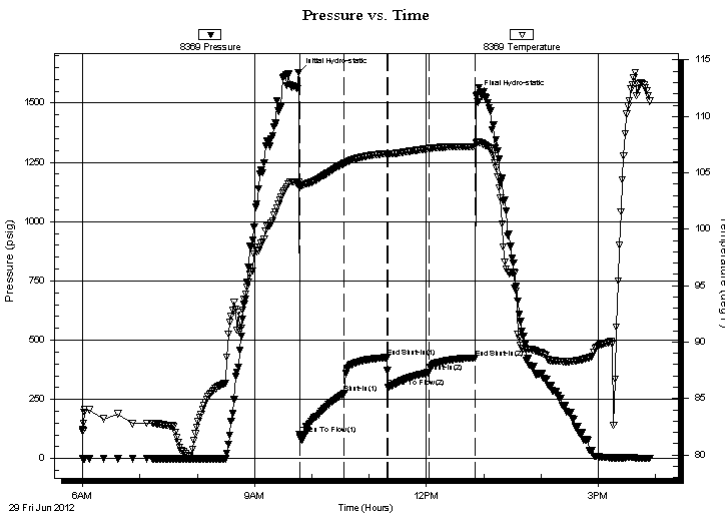
## Serial #: 8369

Inside

Press @ Run Depth: 364.94 psig @ 3305.00 ft (KB) Capacity: 8000.00 psig  
 Start Date: 2012.06.29 End Date: 2012.06.29 Last Calib.: 2012.06.29  
 Start Time: 06:00:05 End Time: 15:53:30 Time On Btm: 2012.06.29 @ 09:46:00  
 Time Off Btm: 2012.06.29 @ 12:53:00

**TEST COMMENT:** IF-BOB in 9 min died back to 3" slid 15' to bottom  
 ISI-BOB in 10.5 min  
 FF-BOB in 5.5 min  
 FSI-BOB in 35 min died back to 11"

## PRESSURE SUMMARY



Time (Min.)	Pressure (psig)	Temp (deg F)	Annotation
0	1629.24	104.16	Initial Hydro-static
1	104.16	103.66	Open To Flow (1)
48	277.17	105.83	Shut-In(1)
93	426.79	106.71	End Shut-In(1)
94	300.09	106.68	Open To Flow (2)
137	364.94	107.15	Shut-In(2)
185	425.43	107.30	End Shut-In(2)
187	1534.55	107.67	Final Hydro-static

## Recovery

Length (ft)	Description	Volume (bbl)
216.00	VSOCMW 5%O 10%M 85%W	3.03
434.00	GVSWCO 50%G 5%W 45%O	6.09
210.00	VGOCM 60%G 20%M 20%O	2.95
60.00	VSOCM 2%O 98%M	0.84

## Gas Rates

Choke (inches)	Pressure (psig)	Gas Rate (Mcf/d)





**TRILOBITE  
TESTING, INC.**

# DRILL STEM TEST REPORT

**TOOL DIAGRAM**

TDI, Inc.  
1310 Bison Rd  
Hays KS 67601  
ATTN: Herb Deines

**32-14s-18w Ellis, KS**  
**Rohr-Schmeidler #1**  
Job Ticket: 49264      **DST#: 1**  
Test Start: 2012.06.29 @ 06:00:00

**Tool Information**

Drill Pipe:	Length: 3300.00 ft	Diameter: 3.80 inches	Volume: 46.29 bbl	Tool Weight: 2000.00 lb
Heavy Wt. Pipe:	Length: 0.00 ft	Diameter: 2.70 inches	Volume: 0.00 bbl	Weight set on Packer: 25000.00 lb
Drill Collar:	Length: 0.00 ft	Diameter: 2.25 inches	Volume: 0.00 bbl	Weight to Pull Loose: 65000.00 lb
			<u>Total Volume: 46.29 bbl</u>	Tool Chased 15.00 ft
Drill Pipe Above KB:	17.00 ft			String Weight: Initial 32000.00 lb
Depth to Top Packer:	3304.00 ft			Final 38000.00 lb
Depth to Bottom Packer:	ft			
Interval between Packers:	76.00 ft			
Tool Length:	97.00 ft			
Number of Packers:	2	Diameter: 6.75 inches		

Tool Comments:

<b>Tool Description</b>	<b>Length (ft)</b>	<b>Serial No.</b>	<b>Position</b>	<b>Depth (ft)</b>	<b>Accum. Lengths</b>
-------------------------	--------------------	-------------------	-----------------	-------------------	-----------------------

Change Over Sub	1.00			3284.00	
Shut In Tool	5.00			3289.00	
Hydraulic tool	5.00			3294.00	
Packer	5.00			3299.00	21.00      Bottom Of Top Packer
Packer	5.00			3304.00	
Stubb	1.00			3305.00	
Recorder	0.00	8369	Inside	3305.00	
Recorder	0.00	8319	Outside	3305.00	
Perforations	7.00			3312.00	
Change Over Sub	1.00			3313.00	
Drill Pipe	63.00			3376.00	
Change Over Sub	1.00			3377.00	
Bullnose	3.00			3380.00	76.00      Bottom Packers & Anchor

**Total Tool Length: 97.00**



**TRILOBITE  
TESTING, INC.**

# DRILL STEM TEST REPORT

**FLUID SUMMARY**

TDI, Inc.

**32-14s-18w Ellis, KS**

1310 Bison Rd  
Hays KS 67601

**Rohr-Schmeidler #1**

Job Ticket: 49264

**DST#: 1**

ATTN: Herb Deines

Test Start: 2012.06.29 @ 06:00:00

## Mud and Cushion Information

Mud Type: Gel Chem

Cushion Type:

Oil API:

deg API

Mud Weight: 9.00 lb/gal

Cushion Length:

ft

Water Salinity: 115000 ppm

Viscosity: 59.00 sec/qt

Cushion Volume:

bbbl

Water Loss: 6.79 in<sup>3</sup>

Gas Cushion Type:

Resistivity: ohm.m

Gas Cushion Pressure:

psig

Salinity: 2200.00 ppm

Filter Cake: inches

## Recovery Information

Recovery Table

Length ft	Description	Volume bbbl
216.00	VSOCMW 5%O 10%M 85%W	3.030
434.00	GVSWCO 50%G 5%W 45%O	6.088
210.00	VGOCM 60%G 20%M 20%O	2.946
60.00	VSOCM 2%O 98%M	0.842

Total Length: 920.00 ft      Total Volume: 12.906 bbl

Num Fluid Samples: 0

Num Gas Bombs: 0

Serial #:

Laboratory Name:

Laboratory Location:

Recovery Comments: RW .05 @100

Serial #: 8369

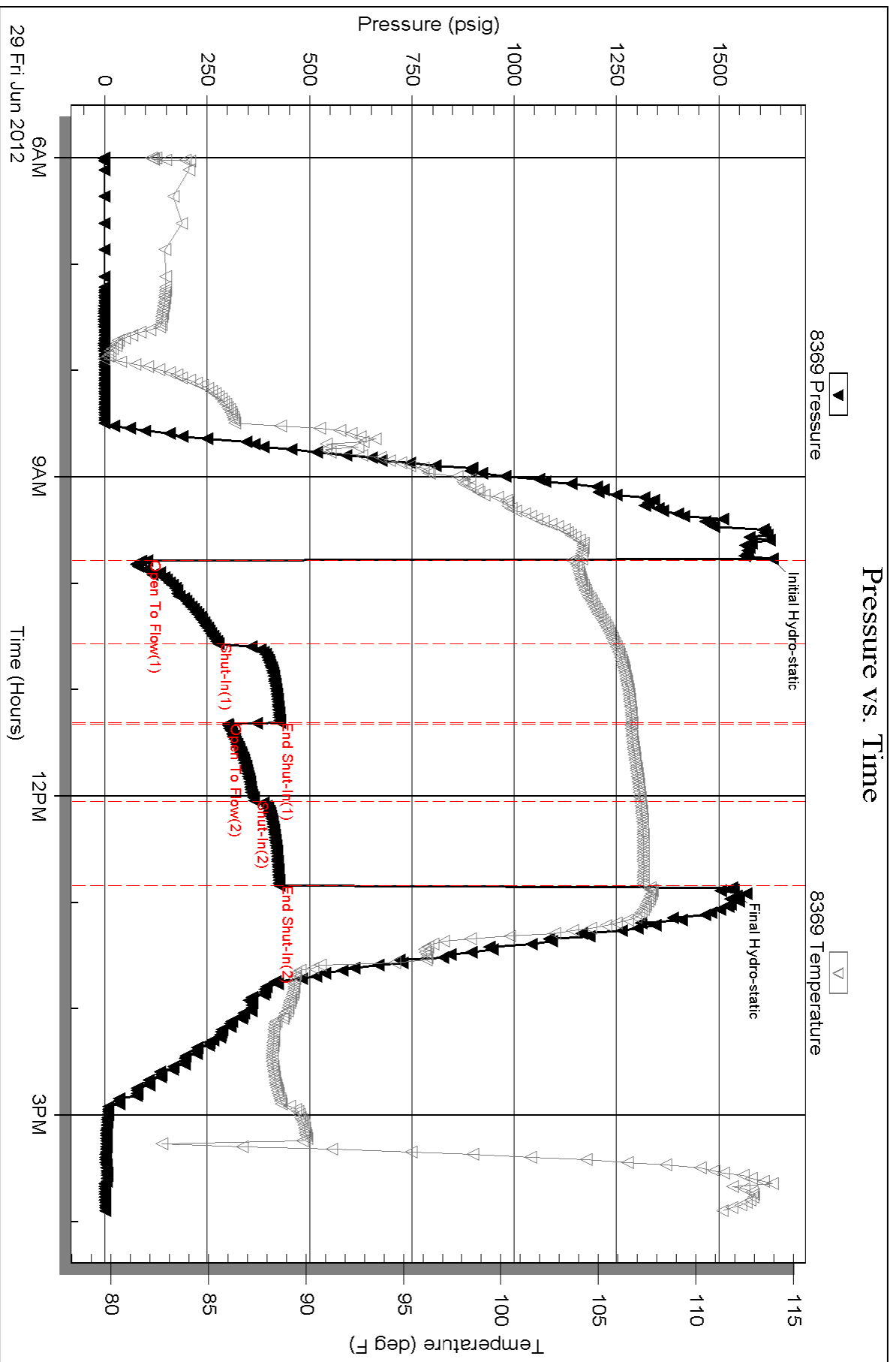
Inside

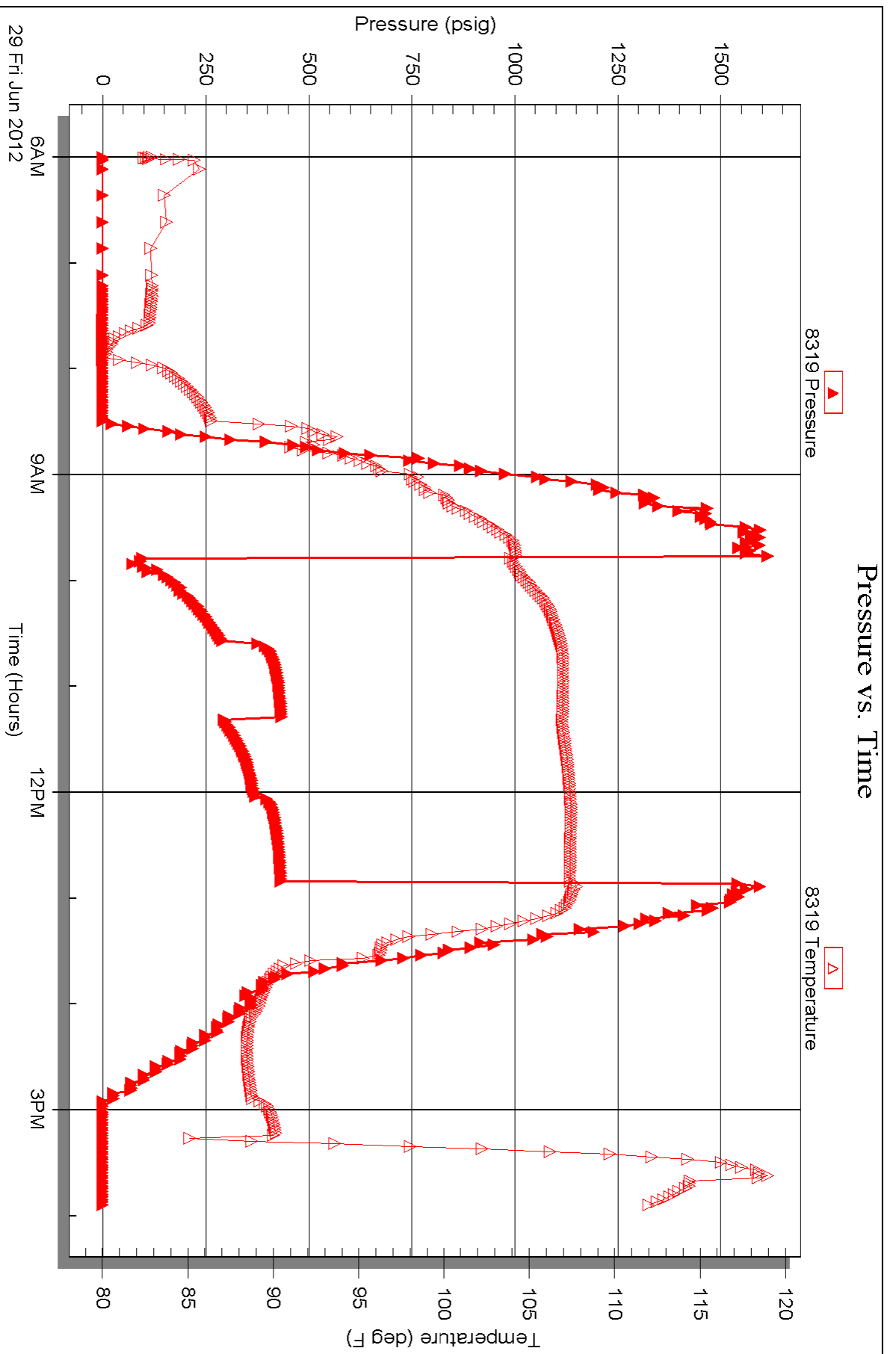
TDI, Inc.

Rohr-Schneider #1

DST Test Number: 1

### Pressure vs. Time







# TRILOBITE TESTING INC.

P.O. Box 1733 • Hays, Kansas 67601

## Test Ticket

NO. 49264

Well Name & No. Aohr-Schmeidler #1 Test No. 1 Date 6/29/12  
 Company TDT, Inc. Elevation 2049 KB 2041 GL  
 Address 1310 Bison Rd Hays KS 67601  
 Co. Rep / Geo. Herb Rig Southwind #1  
 Location: Sec. 32 Twp. 14 Rge. 18 Co. Ellis State KS

Interval Tested 3304-3380 Zone Tested KC"A-D"  
 Anchor Length 26 Drill Pipe Run 3300 Mud Wt. 9.1  
 Top Packer Depth 3299 Drill Collars Run — Vis 59  
 Bottom Packer Depth 3304 Wt. Pipe Run — WL 6.8  
 Total Depth 3380 Chlorides 2,200 ppm System LCM 1

Blow Description FF-BOB in 9 min died back to 3 in slid 15 ft to bottom  
FSI-BOB in 10 1/2 min  
FF-BOB in 5 1/2 min 675 in 40 min  
FSI-BOB in 35 min

Rec	Feet of	%gas	%oil	%water	%mud
<u>216</u>	<u>VSOCMW</u>	<u>5</u>	<u>85</u>	<u>10</u>	
<u>434</u>	<u>GVSWCO</u>	<u>50</u>	<u>45</u>	<u>5</u>	
<u>210</u>	<u>VGOCM</u>	<u>60</u>	<u>20</u>		<u>20</u>
<u>60</u>	<u>VSOCM</u>	<u>2</u>			<u>98</u>

Rec Total 920 BHT 107 Gravity — API RW .05 @ 100 °F Chlorides 115,000 ppm

(A) Initial Hydrostatic 1629  Test 1150 T-On Location 5:05  
 (B) First Initial Flow 104  Jars — T-Started 6:00  
 (C) First Final Flow 277  Safety Joint — T-Open 9:45  
 (D) Initial Shut-In 427  Circ Sub — T-Pulled 12:45  
 (E) Second Initial Flow 300  Hourly Standby — T-Out 15:50  
 (F) Second Final Flow 365  Mileage 20 rt X 2 <sup>62</sup> Comments pick up test tools  
 (G) Final Shut-In 425  Sampler — 6/30/12 11:00  
 (H) Final Hydrostatic 1,535  Straddle —  
 Ruined Shale Packer  
 Ruined Packer

Initial Open 45  Extra Packer —  Extra Copies —  
 Initial Shut-In 45  Extra Recorder — Sub Total 0  
 Final Flow 45  Day Standby — Total 1212  
 Final Shut-In 45  Accessibility — MP/DST Disc't —  
 Sub Total 1212

Approved By — Our Representative But Die

Trilobite Testing Inc. shall not be liable for damaged of any kind of the property or personnel of the one for whom a test is made, or for any loss suffered or sustained, directly or indirectly, through the use of its equipment, or its statements or opinion concerning the results of any test, tools lost or damaged in the hole shall be paid for at cost by the party for whom the test is made.