

Covey

The Well Watchers

Scale 1:240 (5"=100') Imperial

Well Name: TROMPETER #1 - 19
Location: Section 19 - Township 14 South - Range 34 West
Licence Number: 15-109-21,115. 0000 Region: Logan County, KS.
Spud Date: 24 July 2012 Drilling Completed:
Surface Coordinates: 2,785' FNL & 1,627' FEL , SE/4
(Approximately NE NE NW SE)
Bottom Hole
Coordinates:
Ground Elevation (ft): 3,170' K.B. Elevation (ft): 3,180'
Logged Interval (ft): 3,400' To: Total Depth (ft):
Formation: Stotler -----> Miss (St. Louis)
Type of Drilling Fluid: Chemical; Low Solids (non-dispersed)

Printed by MUD.LOG from WellSight Systems 1-800-447-1534 www.WellSight.com

OPERATOR

Company: NEW GULF OPERATING, LLC.
Address: 6310 East 102nd Street
Tulsa, Oklahoma 74137
(918) 728-3020
POC Geologist:
Joe Baker

GEOLOGIST

Name: Curtis Covey
Company: COVEY - The Well Watchers
Address: 6548 Bedford Circle
Derby, Kansas 67037
Office: (316) 776 - 0367 Cell: (316) 258-9976

KB: 3,180'

FORMATION TOPS

GL: 3,170'

Formation	Rotary Sample Depth (Datum)	E-log Depth (Datum)
Anhydrite	2,543' (+637')	
B / Anhydrite	2,562' (+618')	
Stotler	3,634' (-454')	
Topeka	3,756' (-576')	
Heebner Shale	3,985' (-805')	
Toronto	4,004' (-824')	
Lansing	4,035' (-855')	
Muncie Creek SH	4,195' (-1,015')	
Stark SH	4,387' (-1,107')	
B / KC	4,376' (-1,182')	
Marmaton	4,417' (-1,237')	
Pawnee LS		
Cherokee Sh		
'Johnson' Zone		
Morrow SH		
Sandstone		
Miss (Lithological)		

RTD: LTD: ATD: E-log is to rotary sample depth. Loggers: Log Tech - Hays, Kansas

DST #1 - LANSING 'B'

Rotary Depth: 4,070' - 4,085'
 Logger's Depth:
 IFP: 18# - 64# / 30"
 ISIP: 1,142# / 45"
 FFP: 67# - 155# / 60"
 FSIP: 1,141# / 90"
 MH: 1,925# - 1,927#

Recovery: 290' Salt Wtr + OIL scum
 Total Fluid: 260'
 IF: Weak 1/8 inch Blow built to 9 inches in 30minutes.
 ISI: No Blow back.
 FF: Weak Surface Blow in 3-1/4 inch built to BOB in 53 minutes.
 FSI: No Blow back.

Recovery Water: (17,500 ppm)
 System Water: (4,000 ppm)
 Recovery Water (Engineer): (NA)
 Reported Rw = 0.28 ohms @ 78 deg F
 Diamond Testing ... Hosington KS.
 Sampler: NA

DST #2 - LANSING 'D'

Rotary Depth: 4,100' - 4,138'
 Logger's Depth:
 IFP: 16# - 25# / 30"
 ISIP: 1,059# / 30"
 FFP: 27# - 33# / 30"
 FSIP: 1,002# / 30"
 MH: 1,921# - 1,920#

Recovery: 25' GAS in Pipe
 15' G&W cut Muddy OIL (4%G,13%W,17%M,66%O)
 20' OIL c Mud (6%O,94%M)
 Total Fluid: 35'
 IF: Weak 1/8 inch Blow built to 1-1/4 inches.
 ISI: No Blow back.
 FF: Weak Surface Blow in 10 minutes increasing to 1/4 inch.
 FSI: No Blow back.

Recovery Water: (9,000 ppm)
 Recovery Water pH: 10.5
 System Water: (5,000 ppm)
 Recovery Water (Engineer): (NA)
 Reported Rw = 0.34 ohms @ 104 deg F
 Diamond Testing ... Hosington KS.
 Sampler: 12% OIL, 88%Mud

2012

DAILY DRILLING STATUS -- JULY

2012

12-1/4" Hole

24 July --- Spud @ 8:30pm.
 25 --- Drill to 270'.
 Run 8-5/8" casing (23#)
 Set casing @ 266'.
 Cemented w/ 225 sx Class A
 (2% Gel + 3% CC).
 [Consolidated]
 Cement did circulate.
 Plug down @ 2:30am.
 WOC.

7-7/8" Hole

25 July --- WOC.
 6:30am @ 270'.
 Under surface casing @ 11:15am.
 26 --- 6:30am @ 1,825'.
 27 --- 6:30am @ 2,880'.
 Displace Mud @ 3,414'.
 28 --- 6:30am @ 3,540'.
 29 --- Short Trip: 25 stands @ 3,970'.
 6:30am @ 4,028'. DST #1:
 Lansing 'B' (4,070'-4,085').
 30 --- Resumed Drilling @ 4:45am.
 6:30am @ 4,115'. DST #2:
 Lansing 'D' (4,100'-4,138')
 Resumed Drilling @ 8:50pm.
 31 --- 6:30am @ 4,245'. Start and

7-7/8" Hole

1 Aug --- 6:30am @ 4,429'.
 Finish DST #3: KC /
 Pleasanton (4,327'-4,429').
 Resume Drilling @
 2 --- 6:30am @

HOLE DEVIATION (270' - ')

DEPTH / TVD	-- INCLINATION	AZIMUTH	NORTH	SOUTH	EAST	WEST	DOGLEG deg/100'
270' /	-- 1.00 (Surface)						
1,271' /	-- 2.00						
2,272' /	-- 0.75						
3,557' /	-- 0.75						
4,085' /	-- 1.00 (DST #1)						

STRAP @ DST #1
 Board: 4,088.31'
 Strap: 4,090.82'
 Diff: 2.51'

CONTRACTOR

VAL Energy --- Rig #4

10,500 E. Berkeley Square Parkway, Suite 1000
 Wichita, Kansas 67230
 Office: (316) 636-2090

Pump: National K-500A
 6" x 15" @ 58 SPM.
 800-950 PSI @ Standpipe.

After Mudup / Main Hole:
 WOB 35M/36M @ 70/75 RPM.

Drill Collars: 6-1/8" x 2.50" --- 546'. (83.5#/ft)
 Dry Collar Weight: 45,591#
 (@ 8.9 ppg / Buoyancy Factor 0.8645)
 Bouyancy Collar Weight: 39,413#
 Design Factor: 15%, therefore:
 available WOB is 33,501#
 Drill Pipe: 4-1/2"XH. (16#/ft - used)

Rig #4 - (620) 617-2793 Toolpusher: Larry Hinderliter - (620) 804-0097

BIT RECORD

DATE	SIZE	TYPE	JET SIZE	DEPTH IN / OUT	CUM. FT.	HOURS	ROP
24 July 2012	12-1/4"	JZ RR	3 / 15's	0' / 270'	270'	2.00	135.0
25 July 2012	7-7/8"	JZ HA QX-20	13 - 13 - 13	270' /			

ROCK TYPES

POROSITY

- E Earthy
- B Fenest
- F Fracture
- X Inter
- M Moldic
- O Organic
- P Pinpoint
- V Vuggy

LITHOLOGY

- Anhy
- Bent
- Brec
- Cht
- Clyst
- Coal
- Granite wash
- Congl
- Dol Imst
- Silty dol
- Calc dol

- Dol 2
- Dol
- Gyp
- Igne
- Lmst 2
- Lmst
- Meta
- Mrlst
- Salt
- Shale 3
- Shale 3
- Shale
- Shcol
- Shgy
- Sltst
- Ss
- Till
- Ss 2

MINERAL

- Mica
- Anhy

- A
- B
- C
- D
- E
- F
- G
- H
- I
- J
- K
- L
- M
- N
- O
- P
- Q
- R
- S
- T
- U
- V
- W
- X
- Y
- Z

- Arggrn
- Arg
- Bent
- Bit
- Brecfrag
- Calc
- Chalk
- Carb
- Chtdk
- Chtlt
- Dol
- Feldspar
- Ferrpel
- Ferr
- Glau
- Gyp
- Hvymn
- Kaol
- Marl
- Minxl
- Nodule
- Phos

- P
- B
- C
- D
- E
- F
- G
- H
- I
- J
- K
- L
- M
- N
- O
- P
- Q
- R
- S
- T
- U
- V
- W
- X
- Y
- Z

- Pyr
- Salt
- Sandy
- Silt
- Sil
- Sulphur
- Tuff
- Copper
- Ooliticastic
- Ooloid
- Oolite
- Sucrosic
- Dark specks
- STRINGER
- Calc dol
- Silty dol
- Anhy
- Arg
- Bent
- Coal
- Dol

- SHOW
- Oil
- Spotted
- Ques
- Dead
- Gas
- Oil/gas
- Bed contact

- Gyp
- Ls
- Mrst
- Calc dol
- Sltstg
- Ssstrg
- Chalk
- New symbol
- Oil
- Spotted
- Ques
- Dead
- Gas
- Oil/gas
- Bed contact

ACCESSORIES

FOSSIL

- Algae
- Amph
- Belm
- Bioclst
- Brach
- Bryozoa
- Cephal
- Coral
- Spore
- Crin
- Echin
- Fish
- Foram
- Fossil
- Gastro

-
-
-
-
-
-
-

- Oolite
- Ostra
- Pelec
- Pellet
- Pisolate
- Plant
- Strom

MINERAL

- Mica
- Anhy
- Arggrn
- Arg
- Bent
- Bit
- Breclrag

-
-
-
-
-
-
-
-
-
-
-
-
-
-
-
-
-
-
-
-
-
-
-
-
-
-
-
-
-
-
-
-
-
-
-
-
-
-
-
-
-
-
-
-
-
-
-
-
-
-
-
-
-
-
-
-
-
-
-
-
-
-
-
-
-
-
-
-
-
-
-
-
-
-
-
-
-
-
-
-
-
-
-
-
-
-
-
-
-
-
-
-
-
-
-
-
-
-
-
-

- Calc
- Chalk
- Carb
- Chtdk
- Chltt
- Dol
- Feldspar
- Ferrpel
- Ferr
- Glau
- Gyp
- Hvymn
- Kaol
- Marl
- Minxl
- Nodule

-
-
-
-
-
-
-
-
-
-
-
-
-
-
-
-
-
-
-
-
-
-
-
-
-
-
-
-
-
-
-
-
-
-
-
-
-
-
-
-
-
-
-
-
-
-
-
-
-
-
-
-
-
-
-
-
-
-
-
-
-
-
-
-
-
-
-
-
-
-
-
-
-
-
-
-
-
-
-
-
-
-
-
-
-
-
-
-
-
-
-
-
-
-
-
-
-
-
-
-

- Phos
- Pyr
- Salt
- Sandy
- Silt
- Sil
- Sulphur
- Tuff
- Copper
- Ooliticastic
- Oolite
- Sucrosic
- Dark specks

STRINGER

- Calc dol
- Silty dol
- Anhy
- Arg
- Bent
- Coal
- Dol
- Gyp
- Ls
- Mrst
- Calc dol
- Sltstrg
- Ssstrg
- Chalk
- New symbol

OTHER SYMBOLS

ACTIVITY

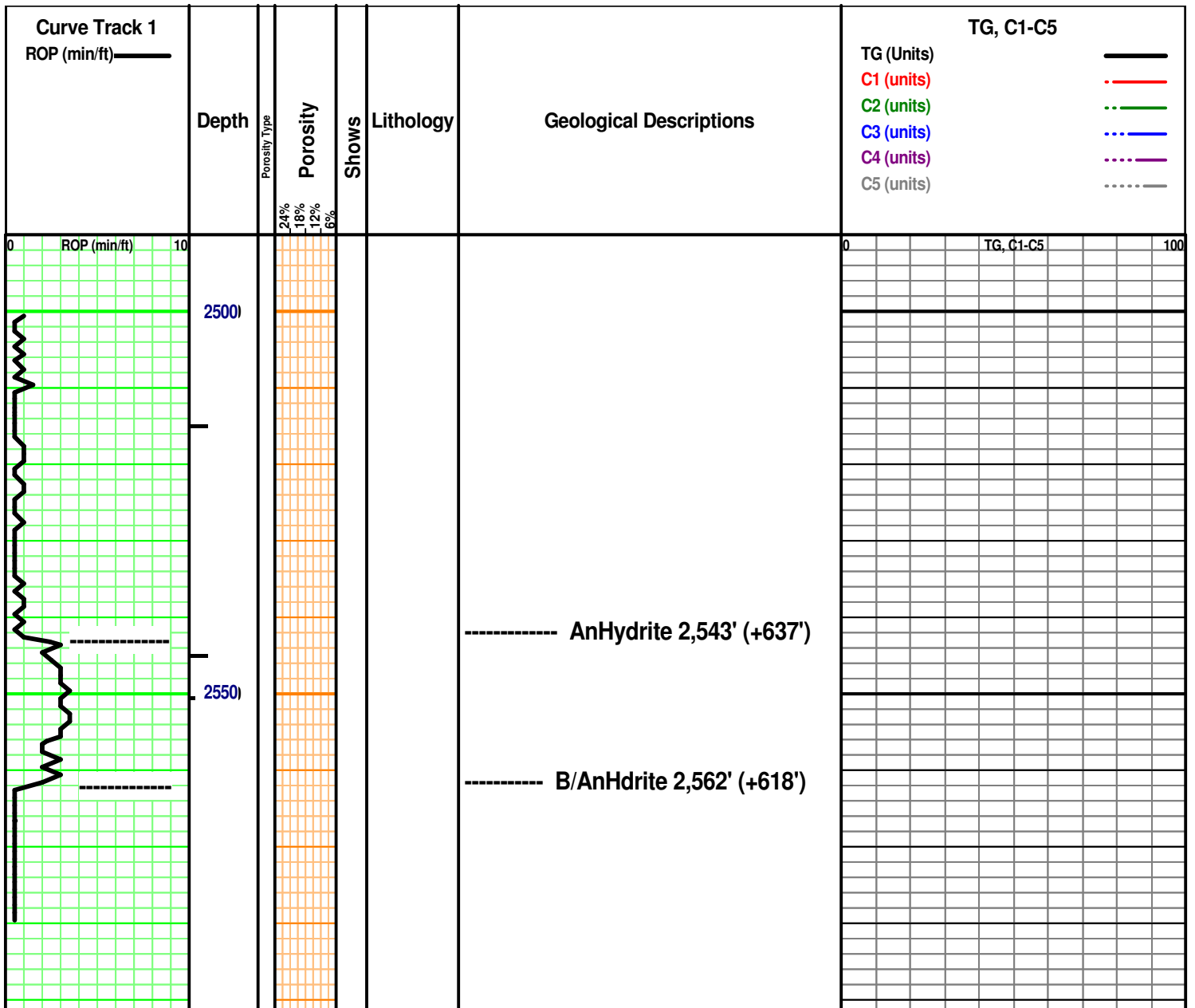
- Lost circluation
- Circulate for same

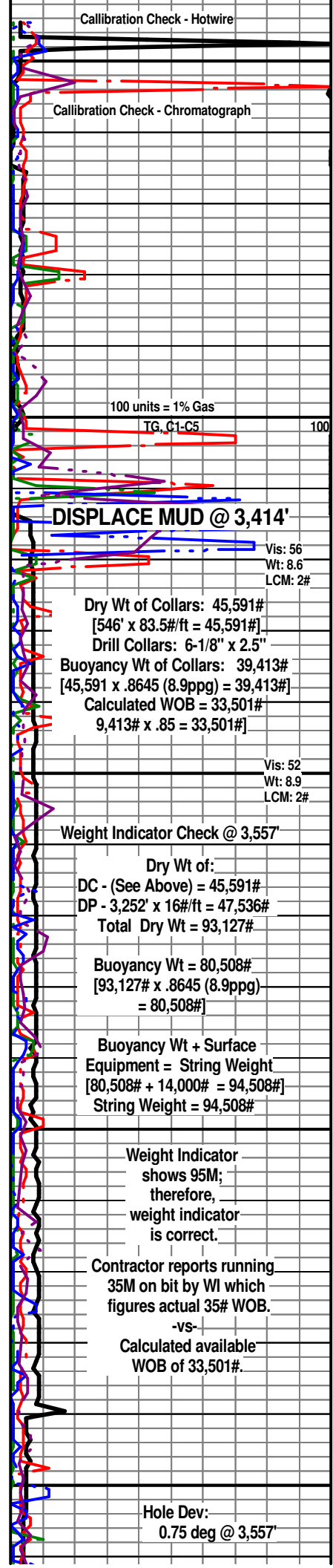
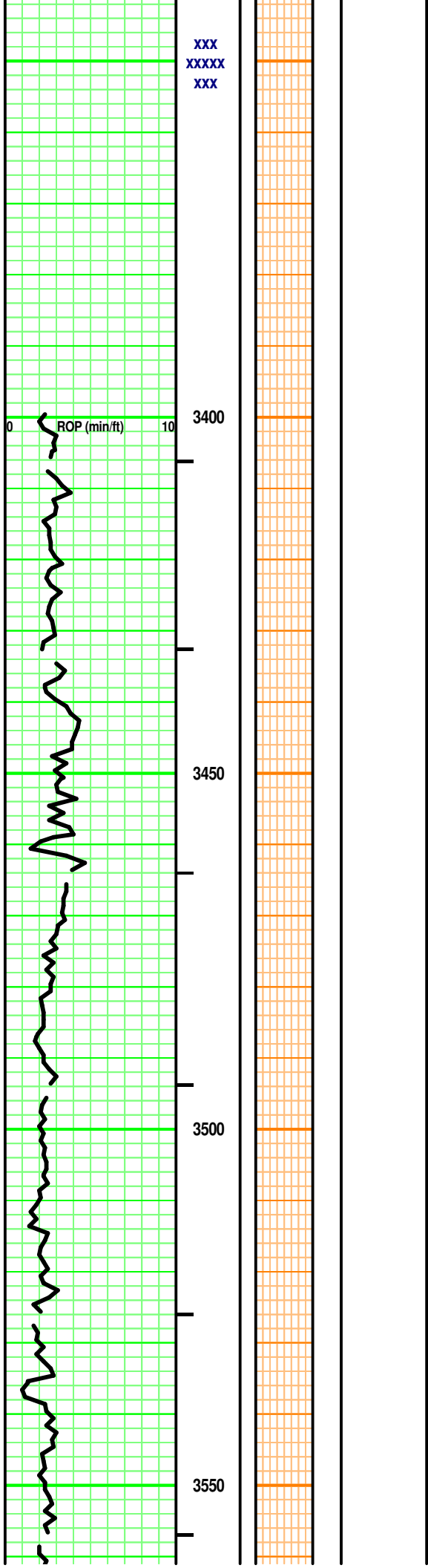
- Circulate for same
- Rtd
- Trip

Circulate for same

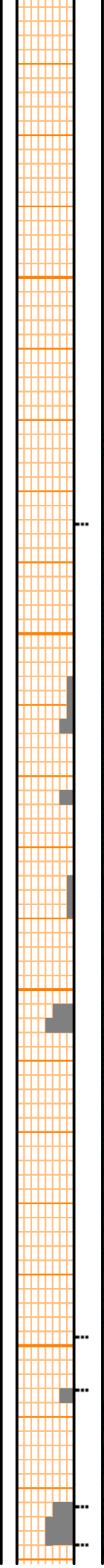
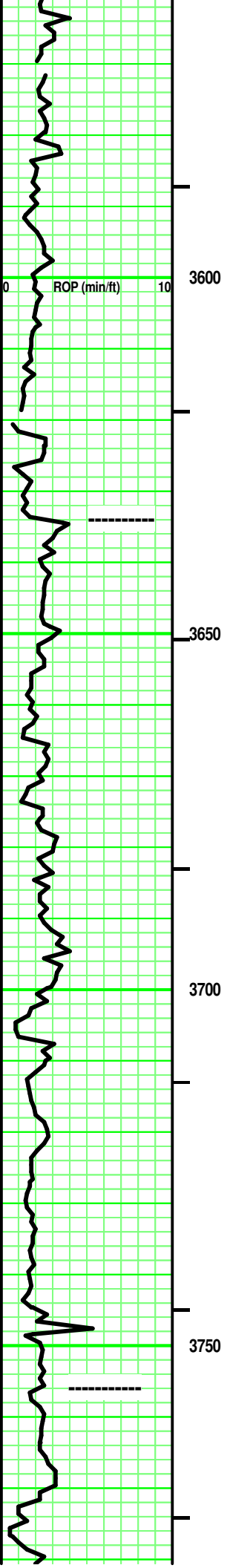
- Connection
- Rft

Sidewall





Vis: 3.557' -
 Wt: 49 Wt: 8.8
 Wtr Loss: 7.2
 PV: 14 YP: 15
 Gels: 10/18
 pH: 11.0 LCM: 3#
 Cl (3,000) Ca (40)
 Solids: 3.2%



SH - Grays. Sing. soft. tr limy stringers

Interbedded LS's
 LS - Lt/ Med Tan. Sing/ rare Mot. Micro/
 Crypto-xln. xln por. No/ tr Re-xln. Firm. No/ tr vis
 por.

LS - Tans/ tr to some Lt Gray. Sing/ tr Mot. XF/
 Micro-xln. xln por. subchalky in part. No/ tr fossil
 frags. partly/ Friable. No/ tr vis por.

LS - Lt Tan/ some Pale Lt Gray. Sing/ Mot.
 VF-/XF-xln. xln por. some argil intermixed and
 interbedded. (marly?) No/ tr vis por.

SH - Lt/ Med Gray. Sing. Firm. highly limy in part.

LS - Lt/ Med Tan. some Tannish Off White. Sing/
 some Mot. XF-/ Micro-xln. rare Crypto-xln. xln
 por. some fossil frags. No/ tr Re-xln. No/ tr
 subchalky in part. partly Firm. No/ tr/ rare Fair vis
 por.

LS - Lt Grayish Tan Micro-Oolites. Clear/ Tan opaque matrix.
 Friable. No/ tr vis por.

LS - Lt/ Med Tan. some Tannish Off White/ Lt

100 units = 1% Gas
 TG, C1-C5

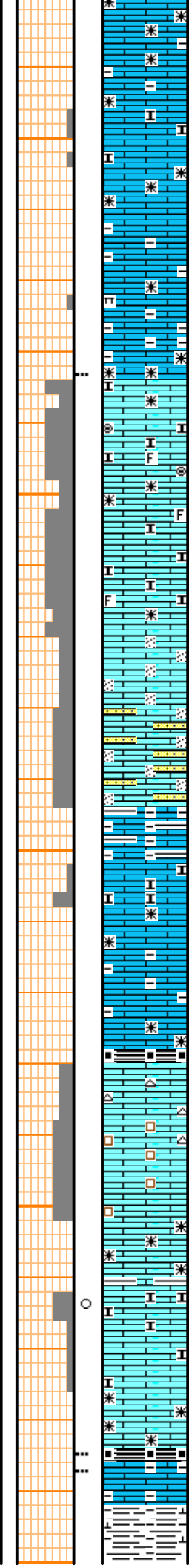
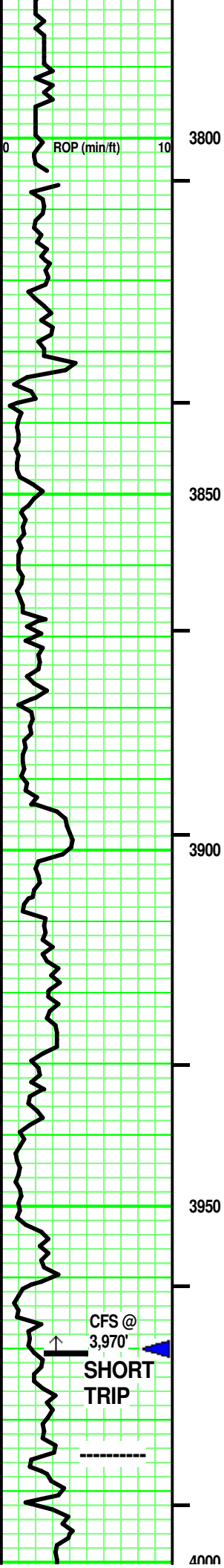
Vis: 51
 Wt: 9.0
 LCM: 3#

-- STOTLER
 3,634' (- 454')

Vis: 51
 Wt: 9.1
 LCM: 2#

Vis: 50
 Wt: 8.8
 LCM: 2#

-- TOPEKA
 3,756' (- 576')



LS - Lt/ med Tan. some Tannish Off White/ Lt Gray. Sing/ some Mot. XF-/ Micro-xln. xln & tr part por. some fossil frags.. No/ tr subchalky in part. argil/ shaly interbedded/ intermixed in part. partly Firm. No/ tr/ rare Fair vis por.

LS - Tans/ some Off White & some Lt Gray. Sing/ Mot/ Mixed. some VF-/ mostly XF- & Micro-xln. xln & part por. No/ tr mixed: Micro-Olites / subchalky / silt sized SA qtz sand 'floating' in LS matrix / fossil frags. tr interbedded Lt Gray Shale. partly Friable. tr/ mostly Fair vis por.

LS - Tans/ some Off White/ tr/ Lt Gray at top. Sing/ some Mot. some VF-/ XF-/ Micro-xln. xln & part por. No/ tr Re-xln. argil/ shaly intermixed/ interbedded. some fossil frags. subchalky in part. partly Firm. No/ tr vis por.

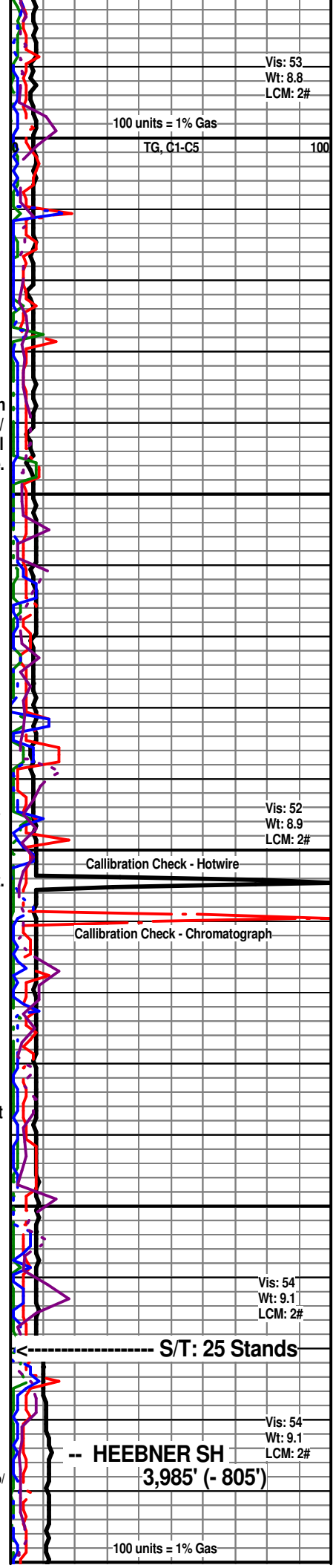
SH - Black. Sing. carb. tr fissile.

LS - Tans/ tr to some Off White. Sing/ some Mot. VF-/ XF-/ tr to some Micro-xln. xln, sucrosic & part por- Sing/ Mixed. No/ tr Re-xln. No/ some fossil frags. subchalky in part. tr shale interbedded/ tr mixed. [tr/ some CHERT - Clear/ Tan/ tr Off White. Mot. Transparent to semi-transparent. some Inclusions. No tripolitic.] partly friable to mostly Friable. No/ tr / some Fair vis por.

Add: LS - Lt Tan. Sing. Micro-xln. xln por. subchalky. Friable. No/ tr vis por. No odor. No/? dull yellow fluorescence. No free oil or gas. No/ few pcs: spotted Med Tan stain. No cut/ residual. No acid/ residual.

SH - Black. Sing. carb. soft.
LS - Lt Tan/ Tannish Gray. Sing. XF-xln. xln por. No/ tr argl. No/ tr vis por.

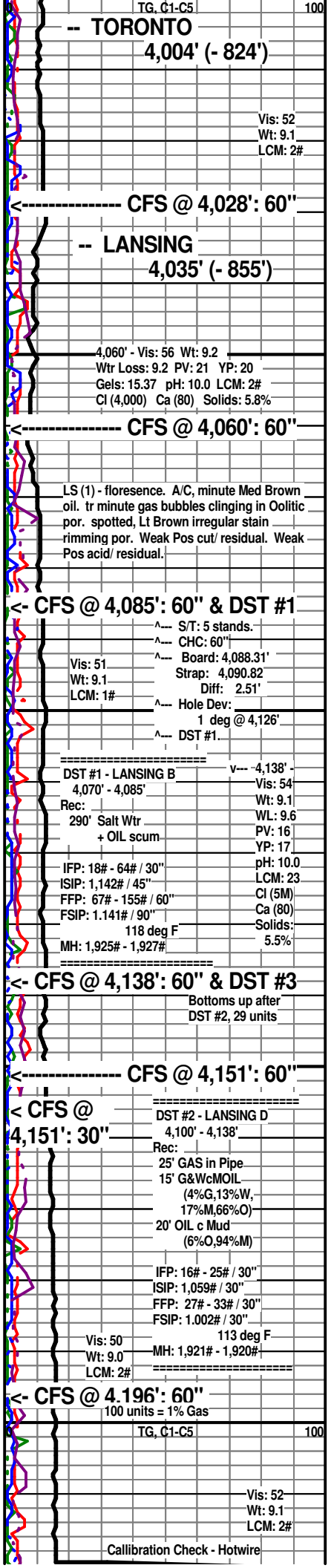
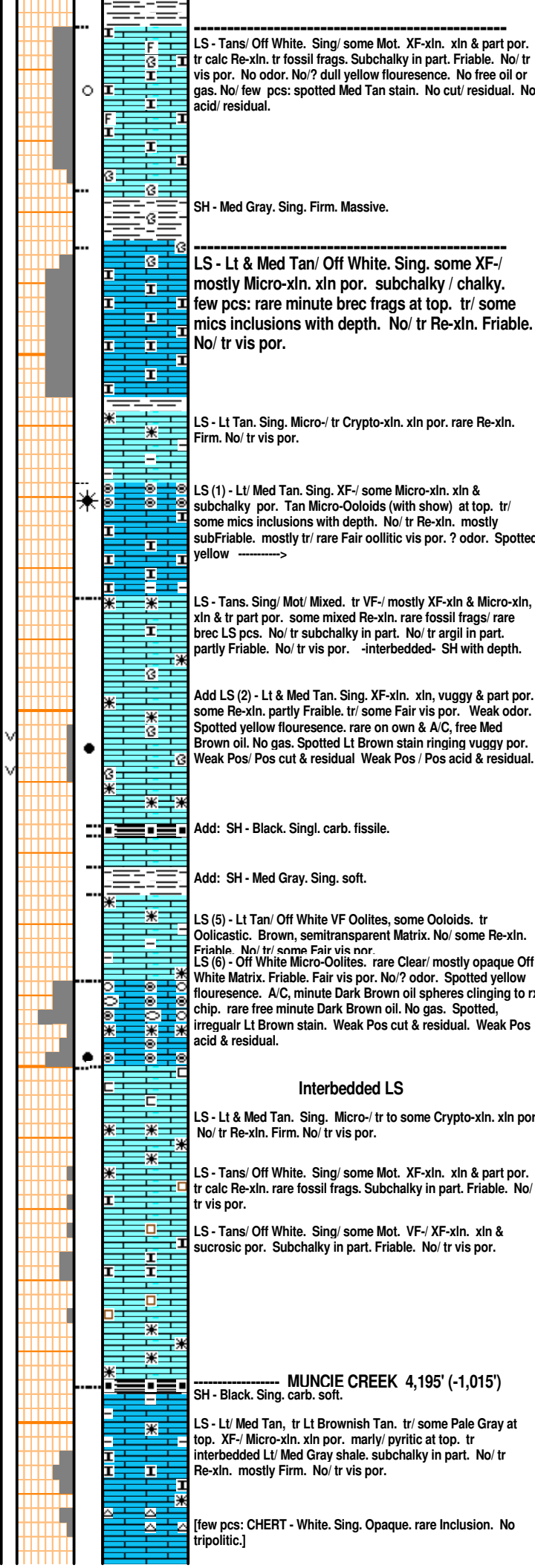
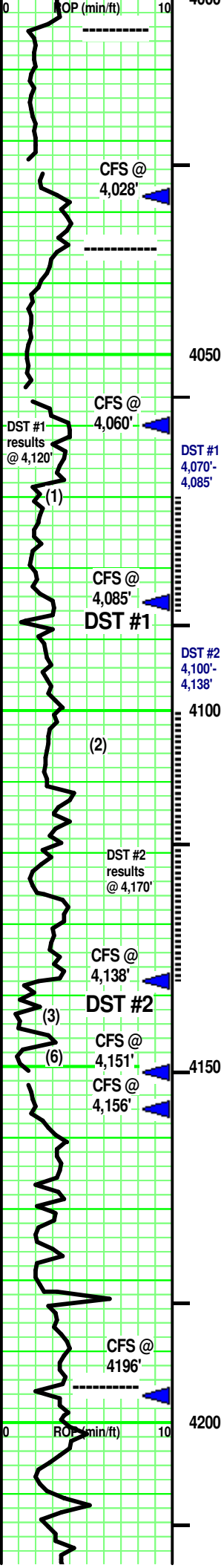
SH - Med Gray/ Tannish Gray. Sing. highly limy with depth.

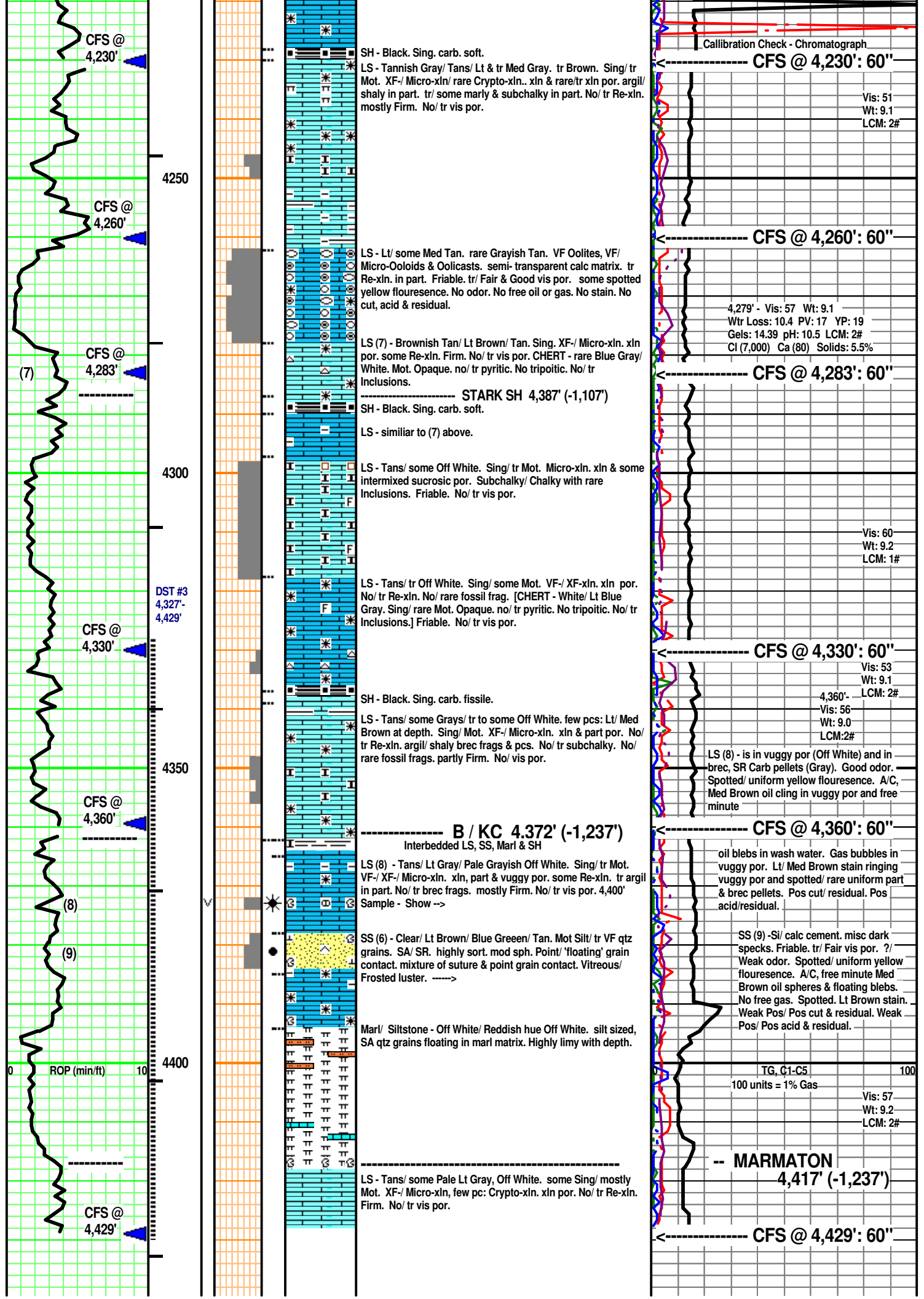


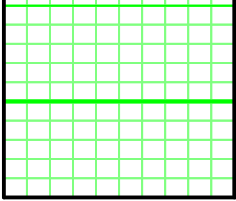
CFS @ 3,970'

SHORT TRIP

HEEBNER SH
3,985' (- 805')







4450

