



**TRILOBITE
TESTING, INC.**

DRILL STEM TEST REPORT

Shakespeare Oil Co.
202 W Main St.
Salem IL
62881
ATTN: Tim Priest

23-13-31 Logan Co. KS

Foster 1-17

Job Ticket: 48985

DST#: 1

Test Start: 2012.08.06 @ 09:43:15

GENERAL INFORMATION:

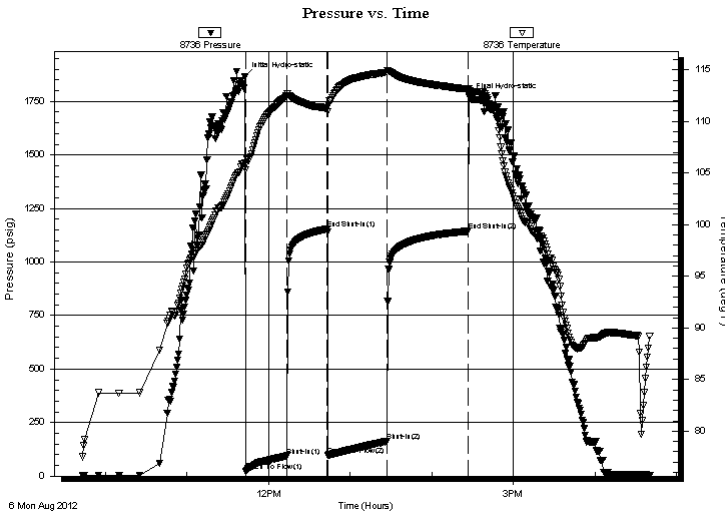
Formation: **3800**
 Deviated: No Whipstock: ft (KB)
 Test Type: Conventional Bottom Hole (Initial)
 Time Tool Opened: 11:43:00
 Tester: Mike Roberts
 Time Test Ended: 16:40:45
 Unit No: 48
 Interval: **3800.00 ft (KB) To 3820.00 ft (KB) (TVD)**
 Reference Elevations: 2783.00 ft (KB)
 Total Depth: 3820.00 ft (KB) (TVD)
 2773.00 ft (CF)
 Hole Diameter: 7.88 inches
 Hole Condition: Fair
 KB to GR/CF: 10.00 ft

Serial #: 8736

Press @ Run Depth: 162.53 psig @ ft (KB) Capacity: 8000.00 psig
 Start Date: 2012.08.06 End Date: 2012.08.06 Last Calib.: 2012.08.06
 Start Time: 09:43:15 End Time: 16:40:45 Time On Btm: 2012.08.06 @ 11:42:45
 Time Off Btm: 2012.08.06 @ 14:27:30

TEST COMMENT: IF:BOB in 16 min
 IS:No return blow
 FF:BOB in 32 min
 FS:No return blow

PRESSURE SUMMARY



Time (Min.)	Pressure (psig)	Temp (deg F)	Annotation
0	1863.92	106.03	Initial Hydro-static
1	23.22	105.35	Open To Flow (1)
31	94.84	112.48	Shut-In(1)
61	1153.58	111.26	End Shut-In(1)
61	97.69	110.95	Open To Flow (2)
104	162.53	114.75	Shut-In(2)
165	1144.39	113.10	End Shut-In(2)
165	1769.45	113.19	Final Hydro-static

Recovery

Length (ft)	Description	Volume (bbl)
152.00	sw 90%w 10%m	1.31
186.00	w cm 20%w 80%m	2.61
2.00	Free Oil	0.03

Gas Rates

Choke (inches)	Pressure (psig)	Gas Rate (Mcf/d)



TRILOBITE
TESTING, INC.

DRILL STEM TEST REPORT

Shakespeare Oil Co.

23-13-31 Logan Co. KS

202 W Main St.
Salem IL
62881
ATTN: Tim Priest

Foster 1-17

Job Ticket: 48985 **DST#: 1**

Test Start: 2012.08.06 @ 09:43:15

GENERAL INFORMATION:

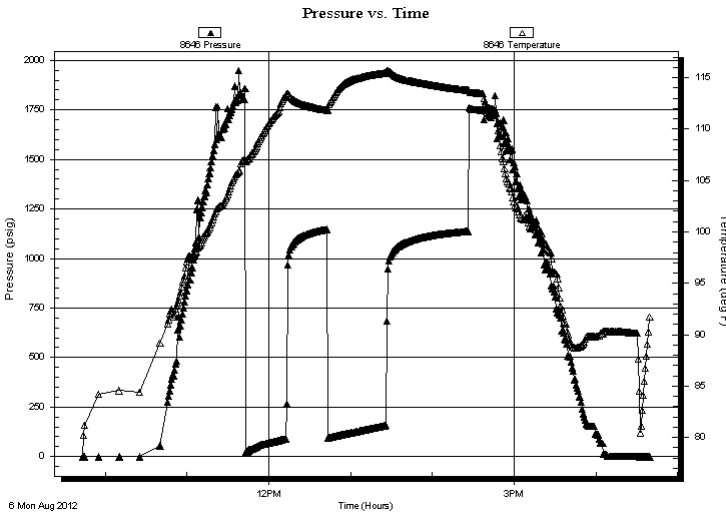
Formation: **3800**
 Deviated: No Whipstock: ft (KB) Test Type: Conventional Bottom Hole (Initial)
 Time Tool Opened: 11:43:00 Tester: Mike Roberts
 Time Test Ended: 16:40:45 Unit No: 48
Interval: 3800.00 ft (KB) To 3820.00 ft (KB) (TVD) Reference Elevations: 2783.00 ft (KB)
 Total Depth: 3820.00 ft (KB) (TVD) 2773.00 ft (CF)
 Hole Diameter: 7.88 inches Hole Condition: Fair KB to GR/CF: 10.00 ft

Serial #: 8646

Press @ RunDepth: psig @ ft (KB) Capacity: 8000.00 psig
 Start Date: 2012.08.06 End Date: 2012.08.06 Last Calib.: 2012.08.06
 Start Time: 09:43:15 End Time: 16:39:30 Time On Btm:
 Time Off Btm:

TEST COMMENT: IF:BOB in 16 min
 IS:No return blow
 FF:BOB in 32 min
 FS:No return blow

PRESSURE SUMMARY



Time (Min.)	Pressure (psig)	Temp (deg F)	Annotation

Recovery

Length (ft)	Description	Volume (bbl)
152.00	sw 90%w 10%m	1.31
186.00	w cm 20%w 80%m	2.61
2.00	Free Oil	0.03

Gas Rates

Choke (inches)	Pressure (psig)	Gas Rate (Mcf/d)



**TRILOBITE
TESTING, INC.**

DRILL STEM TEST REPORT

FLUID SUMMARY

Shakespeare Oil Co.

23-13-31 Logan Co. KS

202 W Main St.
Salem IL
62881

Foster 1-17

Job Ticket: 48985

DST#: 1

ATTN: Tim Priest

Test Start: 2012.08.06 @ 09:43:15

Mud and Cushion Information

Mud Type: Gel Chem

Cushion Type:

Oil API:

0 deg API

Mud Weight: 9.00 lb/gal

Cushion Length:

ft

Water Salinity:

13000 ppm

Viscosity: 52.00 sec/qt

Cushion Volume:

bbbl

Water Loss: 6.39 in³

Gas Cushion Type:

Resistivity: 0.00 ohm.m

Gas Cushion Pressure:

psig

Salinity: 8000.00 ppm

Filter Cake: 1.00 inches

Recovery Information

Recovery Table

Length ft	Description	Volume bbl
152.00	sw 90%w 10%m	1.312
186.00	w cm 20%w 80%m	2.609
2.00	Free Oil	0.028

Total Length: 340.00 ft Total Volume: 3.949 bbl

Num Fluid Samples: 0

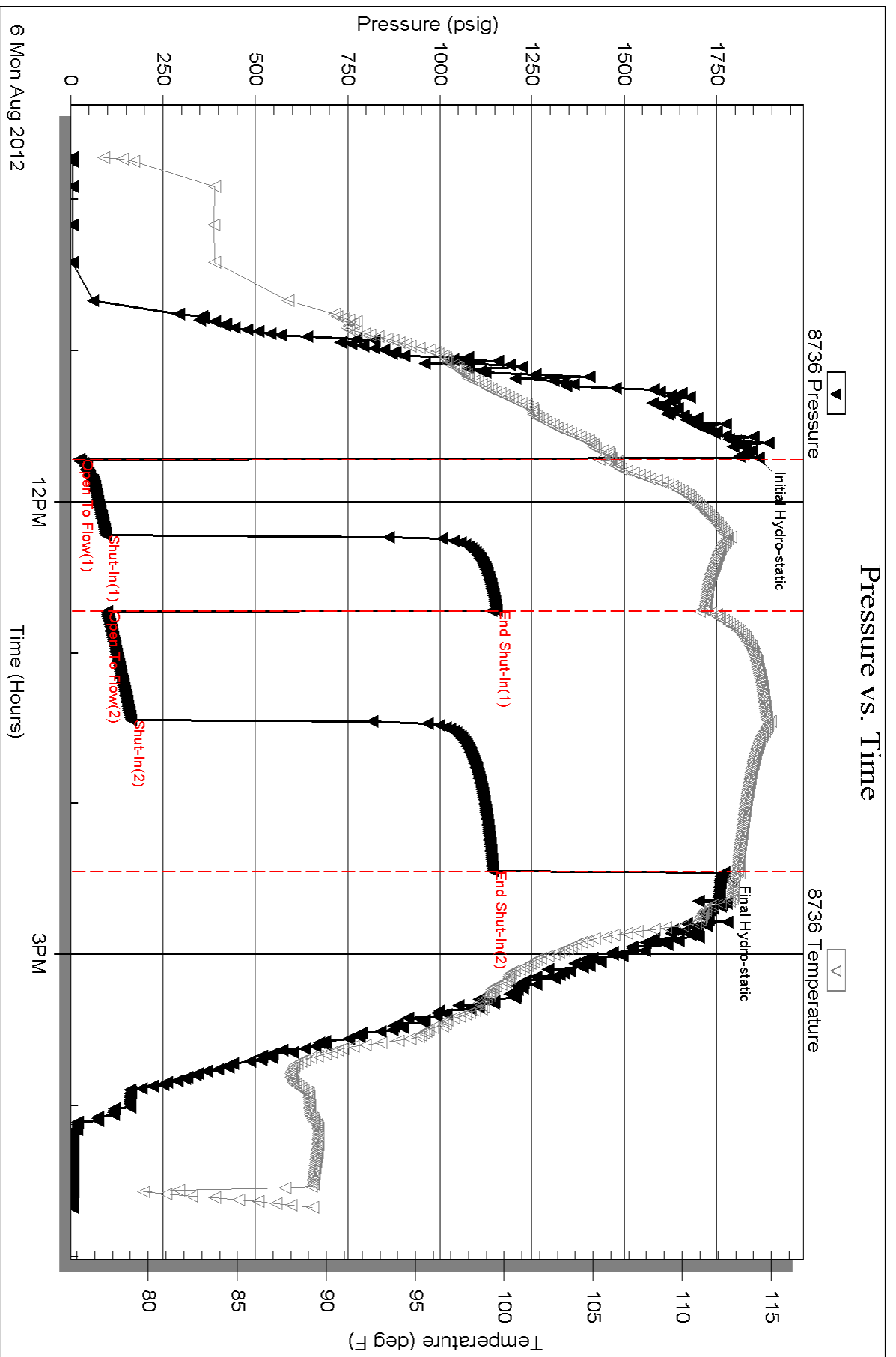
Num Gas Bombs: 0

Serial #:

Laboratory Name:

Laboratory Location:

Recovery Comments: RW= .130@108.4*=13,000 ppm



Serial #: 8646

Shakespeare Oil Co.

Foster 1-17

DST Test Number: 1

