



**TRILOBITE
TESTING, INC.**

DRILL STEM TEST REPORT

Shakespeare Oil Co.

23-13-31 Logan Co. KS

202 W Main St.
Salem IL 62881

Foster 1-17

ATTN: Tim Priest

Job Ticket: 48987

DST#: 3

Test Start: 2012.08.07 @ 20:23:15

GENERAL INFORMATION:

Formation: **E-F**
 Deviated: No Whipstock: ft (KB)
 Test Type: Conventional Bottom Hole (Reset)
 Time Tool Opened: 21:40:16
 Tester: Mike Roberts
 Time Test Ended: 01:39:46
 Unit No: 48
 Interval: **3860.00 ft (KB) To 3878.00 ft (KB) (TVD)**
 Reference Elevations: 2783.00 ft (KB)
 Total Depth: 3878.00 ft (KB) (TVD)
 2773.00 ft (CF)
 Hole Diameter: 7.88 inches
 Hole Condition: Fair
 KB to GR/CF: 10.00 ft

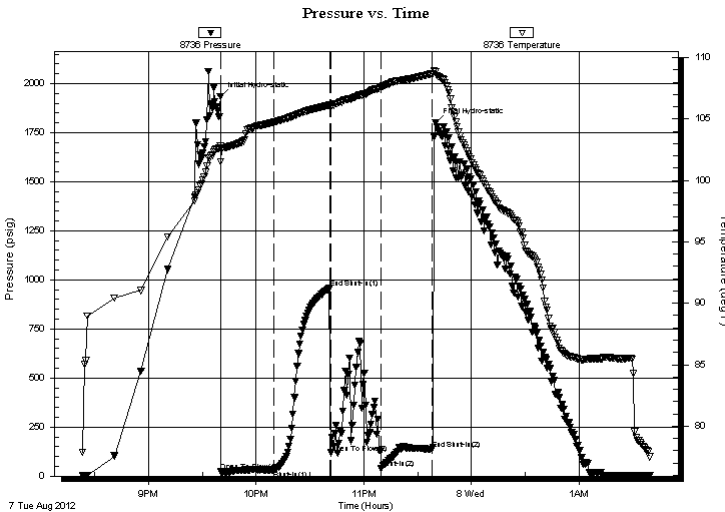
Serial #: 8736

Outside

Press @ Run Depth: 41.29 psig @ 3861.00 ft (KB) Capacity: 8000.00 psig
 Start Date: 2012.08.07 End Date: 2012.08.08 Last Calib.: 2012.08.08
 Start Time: 20:23:15 End Time: 01:39:46 Time On Btm: 2012.08.07 @ 21:40:01
 Time Off Btm: 2012.08.07 @ 23:40:01

TEST COMMENT: IF: Built to 3/4" blow
 IS: No return blow
 FF: No blow ...plugging on the 2nd open
 FS: No return blow

PRESSURE SUMMARY



Time (Min.)	Pressure (psig)	Temp (deg F)	Annotation
0	1935.14	102.77	Initial Hydro-static
1	23.31	101.49	Open To Flow (1)
30	31.84	104.75	Shut-In(1)
61	957.25	106.12	End Shut-In(1)
62	118.99	105.91	Open To Flow (2)
90	41.29	107.56	Shut-In(2)
118	138.33	108.68	End Shut-In(2)
120	1802.17	108.88	Final Hydro-static

Recovery

Length (ft)	Description	Volume (bbl)
5.00	mco 20% m 80% o	0.02

* Recovery from multiple tests

Gas Rates

Choke (inches)	Pressure (psig)	Gas Rate (Mcf/d)



**TRILOBITE
TESTING, INC.**

DRILL STEM TEST REPORT

FLUID SUMMARY

Shakespeare Oil Co.

23-13-31 Logan Co. KS

202 W Main St.
Salem IL 62881

Foster 1-17

Job Ticket: 48987

DST#: 3

ATTN: Tim Priest

Test Start: 2012.08.07 @ 20:23:15

Mud and Cushion Information

Mud Type: Gel Chem

Cushion Type:

Oil API:

0 deg API

Mud Weight: 9.00 lb/gal

Cushion Length:

ft

Water Salinity:

0 ppm

Viscosity: 54.00 sec/qt

Cushion Volume:

bbbl

Water Loss: 9.56 in³

Gas Cushion Type:

Resistivity: 0.00 ohm.m

Gas Cushion Pressure:

psig

Salinity: 7000.00 ppm

Filter Cake: 1.00 inches

Recovery Information

Recovery Table

Length ft	Description	Volume bbl
5.00	mco 20% m 80% o	0.025

Total Length: 5.00 ft Total Volume: 0.025 bbl

Num Fluid Samples: 0

Num Gas Bombs: 0

Serial #:

Laboratory Name:

Laboratory Location:

Recovery Comments: Plugging on the 2nd open

