



**TRILOBITE TESTING, INC.**

# DRILL STEM TEST REPORT

Shakespeare Oil Co.  
202 W Main St.  
Salem IL  
62881  
ATTN: Tim Priest

**23-13-31 Logan Co. KS**

**Foster 1-17**

Job Ticket: 48988

**DST#: 4**

Test Start: 2012.08.08 @ 15:43:15

## GENERAL INFORMATION:

Formation: **"H"**  
 Deviated: No Whipstock: ft (KB)  
 Time Tool Opened: 17:16:00  
 Time Test Ended: 21:52:45  
 Interval: **3927.00 ft (KB) To 3960.00 ft (KB) (TVD)**  
 Total Depth: 3960.00 ft (KB) (TVD)  
 Hole Diameter: 7.88 inches Hole Condition: Fair  
 Test Type: Conventional Bottom Hole (Reset)  
 Tester: Mike Roberts  
 Unit No: 48  
 Reference Elevations: 2783.00 ft (KB)  
 2773.00 ft (CF)  
 KB to GR/CF: 10.00 ft

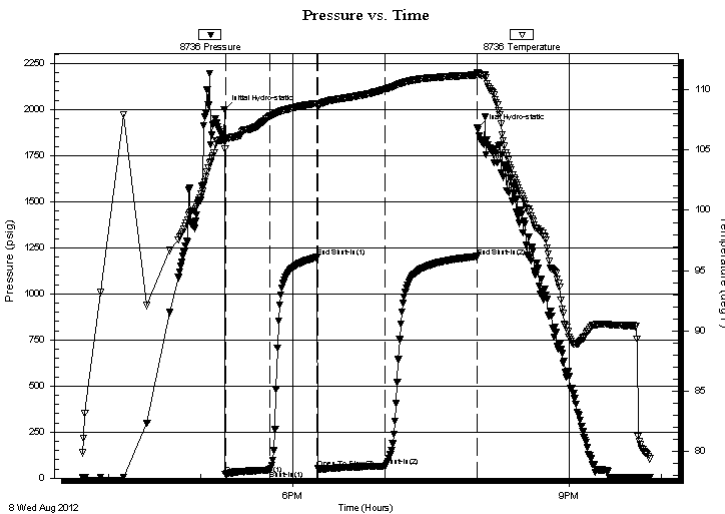
## Serial #: 8736

**Outside**

Press @ Run Depth: 65.61 psig @ 3928.00 ft (KB)  
 Start Date: 2012.08.08 End Date: 2012.08.08  
 Start Time: 15:43:15 End Time: 21:52:45  
 Capacity: 8000.00 psig  
 Last Calib.: 2012.08.08  
 Time On Btm: 2012.08.08 @ 17:15:45  
 Time Off Btm: 2012.08.08 @ 20:00:15

**TEST COMMENT:** IF: Built to 1" blow  
 IS: No return blow  
 FF: Built to 1" blow  
 FS: No return blow

## PRESSURE SUMMARY



Time (Min.)	Pressure (psig)	Temp (deg F)	Annotation
0	1996.92	106.06	Initial Hydro-static
1	21.27	105.08	Open To Flow (1)
30	44.73	107.78	Shut-In(1)
60	1197.23	108.86	End Shut-In(1)
61	52.12	108.56	Open To Flow (2)
105	65.61	110.04	Shut-In(2)
164	1202.13	111.22	End Shut-In(2)
165	1897.51	111.43	Final Hydro-static

## Recovery

Length (ft)	Description	Volume (bbl)
70.00	ocm 2%o 98% m	0.34
2.00	free oil 100% o	0.01

\* Recovery from multiple tests

## Gas Rates

Choke (inches)	Pressure (psig)	Gas Rate (Mcf/d)



**TRILOBITE  
TESTING, INC.**

# DRILL STEM TEST REPORT

**FLUID SUMMARY**

Shakespeare Oil Co.

**23-13-31 Logan Co. KS**

202 W Main St.  
Salem IL  
62881

**Foster 1-17**

Job Ticket: 48988

**DST#: 4**

ATTN: Tim Priest

Test Start: 2012.08.08 @ 15:43:15

## Mud and Cushion Information

Mud Type: Gel Chem

Cushion Type:

Oil API:

0 deg API

Mud Weight: 9.00 lb/gal

Cushion Length:

ft

Water Salinity:

0 ppm

Viscosity: 54.00 sec/qt

Cushion Volume:

bbbl

Water Loss: 9.57 in<sup>3</sup>

Gas Cushion Type:

Resistivity: 0.00 ohm.m

Gas Cushion Pressure:

psig

Salinity: 7000.00 ppm

Filter Cake: 1.00 inches

## Recovery Information

Recovery Table

Length ft	Description	Volume bbbl
70.00	ocm 2%o 98%m	0.344
2.00	free oil 100%o	0.010

Total Length: 72.00 ft      Total Volume: 0.354 bbl

Num Fluid Samples: 0

Num Gas Bombs: 0

Serial #:

Laboratory Name:

Laboratory Location:

Recovery Comments:

