



**TRILOBITE TESTING, INC**

# DRILL STEM TEST REPORT

Shakespeare Oil Co.  
202 W Main St.  
Salem IL  
62881  
ATTN: Tim Priest

**23-13-31 Logan Co. KS**

**Foster 1-17**

Job Ticket: 48991

**DST#: 7**

Test Start: 2012.08.11 @ 02:01:30

## GENERAL INFORMATION:

Formation: **Marmaton-Pawnee**

Deviated: No Whipstock: ft (KB)

Time Tool Opened: 03:40:00

Time Test Ended: 08:33:00

Test Type: Conventional Bottom Hole (Reset)

Tester: Mike Roberts

Unit No: 48

**Interval: 4137.00 ft (KB) To 4245.00 ft (KB) (TVD)**

Reference Elevations: 2783.00 ft (KB)

Total Depth: 4245.00 ft (KB) (TVD)

2773.00 ft (CF)

Hole Diameter: 7.88 inches Hole Condition: Fair

KB to GR/CF: 10.00 ft

**Serial #: 8846**

**Inside**

Press @ Run Depth: 117.43 psig @ 4140.00 ft (KB)

Capacity: 8000.00 psig

Start Date: 2012.08.11

End Date:

2012.08.11

Last Calib.:

2012.08.11

Start Time: 02:01:30

End Time:

08:33:00

Time On Btm:

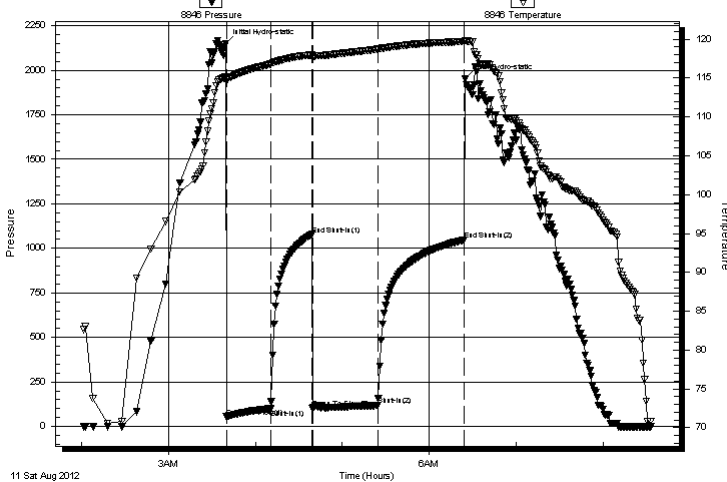
2012.08.11 @ 03:39:30

Time Off Btm:

2012.08.11 @ 06:25:00

**TEST COMMENT:** IF: Built to 2" blow  
IS: No return blow  
FF: Built to 3" blow  
FS: No return blow

Pressure vs. Time



## PRESSURE SUMMARY

Time (Min.)	Pressure (psig)	Temp (deg F)	Annotation
0	2149.21	115.14	Initial Hydro-static
1	53.77	114.52	Open To Flow (1)
31	98.57	116.81	Shut-In(1)
60	1077.40	117.99	End Shut-In(1)
60	99.97	117.50	Open To Flow (2)
105	117.43	118.73	Shut-In(2)
165	1046.02	119.70	End Shut-In(2)
166	1950.15	119.85	Final Hydro-static

## Recovery

Length (ft)	Description	Volume (bbl)
150.00	mud w ith oil spots	1.28

\* Recovery from multiple tests

## Gas Rates

Choke (inches)	Pressure (psig)	Gas Rate (Mcf/d)



**TRILOBITE**  
TESTING, INC

# DRILL STEM TEST REPORT

**FLUID SUMMARY**

Shakespeare Oil Co.

**23-13-31 Logan Co. KS**

202 W Main St.  
Salem IL  
62881

**Foster 1-17**

Job Ticket: 48991

**DST#: 7**

ATTN: Tim Priest

Test Start: 2012.08.11 @ 02:01:30

## Mud and Cushion Information

Mud Type: Gel Chem

Cushion Type:

Oil API:

0 deg API

Mud Weight: 9.00 lb/gal

Cushion Length:

ft

Water Salinity:

0 ppm

Viscosity: 50.00 sec/qt

Cushion Volume:

bbbl

Water Loss: 10.37 in<sup>3</sup>

Gas Cushion Type:

Resistivity: 0.00 ohm.m

Gas Cushion Pressure:

psig

Salinity: 6000.00 ppm

Filter Cake: 1.00 inches

## Recovery Information

Recovery Table

Length ft	Description	Volume bbbl
150.00	mud w ith oil spots	1.284

Total Length: 150.00 ft      Total Volume: 1.284 bbl

Num Fluid Samples: 0

Num Gas Bombs: 0

Serial #:

Laboratory Name:

Laboratory Location:

Recovery Comments:

### Pressure vs. Time

