



**TRILOBITE  
TESTING, INC.**

# DRILL STEM TEST REPORT

Shakespeare Oil Co. Inc

**8-13s-32w Logan Co. KS**

202 W. Main St.  
Salem IL 62881

**Peterson # 2-8**

Job Ticket: 48844

**DST#: 2**

ATTN: Steve Davis

Test Start: 2012.09.18 @ 02:10:00

## GENERAL INFORMATION:

Formation: **LKC " D - E "**

Deviated: No Whipstock: ft (KB)

Time Tool Opened: 04:14:40

Time Test Ended: 08:40:54

Test Type: Conventional Bottom Hole (Reset)

Tester: Will MacLean

Unit No: 40

**Interval: 4044.00 ft (KB) To 4068.00 ft (KB) (TVD)**

Reference Elevations: 2981.00 ft (KB)

Total Depth: 4068.00 ft (KB) (TVD)

2971.00 ft (CF)

Hole Diameter: 7.88 inches Hole Condition: Good

KB to GR/CF: 10.00 ft

**Serial #: 8360**

**Inside**

Press @ Run Depth: 17.44 psig @ 4045.00 ft (KB)

Capacity: 8000.00 psig

Start Date: 2012.09.18

End Date:

2012.09.18

Last Calib.:

2012.09.18

Start Time:

02:10:00

End Time:

08:40:54

Time On Btm:

2012.09.18 @ 04:14:25

Time Off Btm:

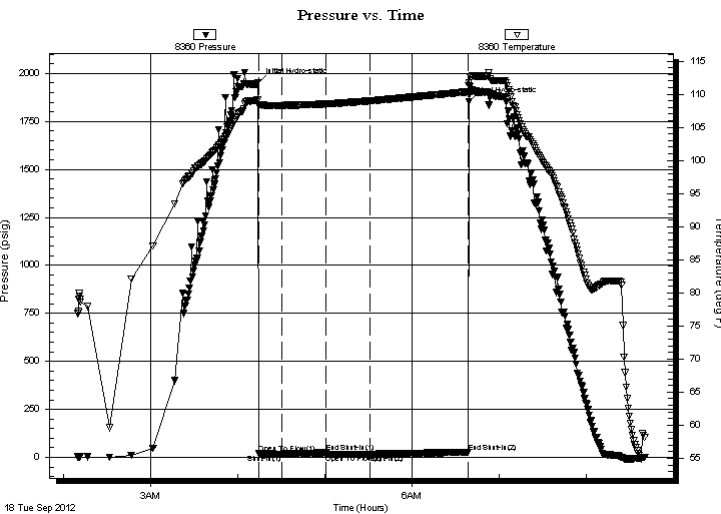
2012.09.18 @ 06:39:24

TEST COMMENT: IF- Weak Surface Blow

IS- No Blow

FF- No Blow

FS- No Blow



## PRESSURE SUMMARY

Time (Min.)	Pressure (psig)	Temp (deg F)	Annotation
0	1950.87	109.06	Initial Hydro-static
1	20.05	108.17	Open To Flow (1)
17	17.73	108.31	Shut-In(1)
47	24.25	108.53	End Shut-In(1)
47	18.10	108.53	Open To Flow (2)
77	17.44	109.00	Shut-In(2)
145	27.88	110.37	End Shut-In(2)
145	1852.74	111.30	Final Hydro-static

## Recovery

Length (ft)	Description	Volume (bbl)
2.00	100%m with Few Oil Spots	0.03

\* Recovery from multiple tests

## Gas Rates

Choke (inches)	Pressure (psig)	Gas Rate (Mcf/d)



**TRILOBITE  
TESTING, INC.**

# DRILL STEM TEST REPORT

**FLUID SUMMARY**

Shakespeare Oil Co. Inc

**8-13s-32w Logan Co. KS**

202 W. Main St.  
Salem IL 62881

**Peterson # 2-8**

Job Ticket: 48844

**DST#: 2**

ATTN: Steve Davis

Test Start: 2012.09.18 @ 02:10:00

## Mud and Cushion Information

Mud Type: Gel Chem

Cushion Type:

Oil API:

deg API

Mud Weight: 9.00 lb/gal

Cushion Length:

ft

Water Salinity:

ppm

Viscosity: 49.00 sec/qt

Cushion Volume:

bbbl

Water Loss: 7.93 in<sup>3</sup>

Gas Cushion Type:

Resistivity: ohm.m

Gas Cushion Pressure:

psig

Salinity: 2000.00 ppm

Filter Cake: 1.00 inches

## Recovery Information

Recovery Table

Length ft	Description	Volume bbbl
2.00	100%m with Few Oil Spots	0.028

Total Length: 2.00 ft      Total Volume: 0.028 bbl

Num Fluid Samples: 0

Num Gas Bombs: 0

Serial #:

Laboratory Name:

Laboratory Location:

Recovery Comments:

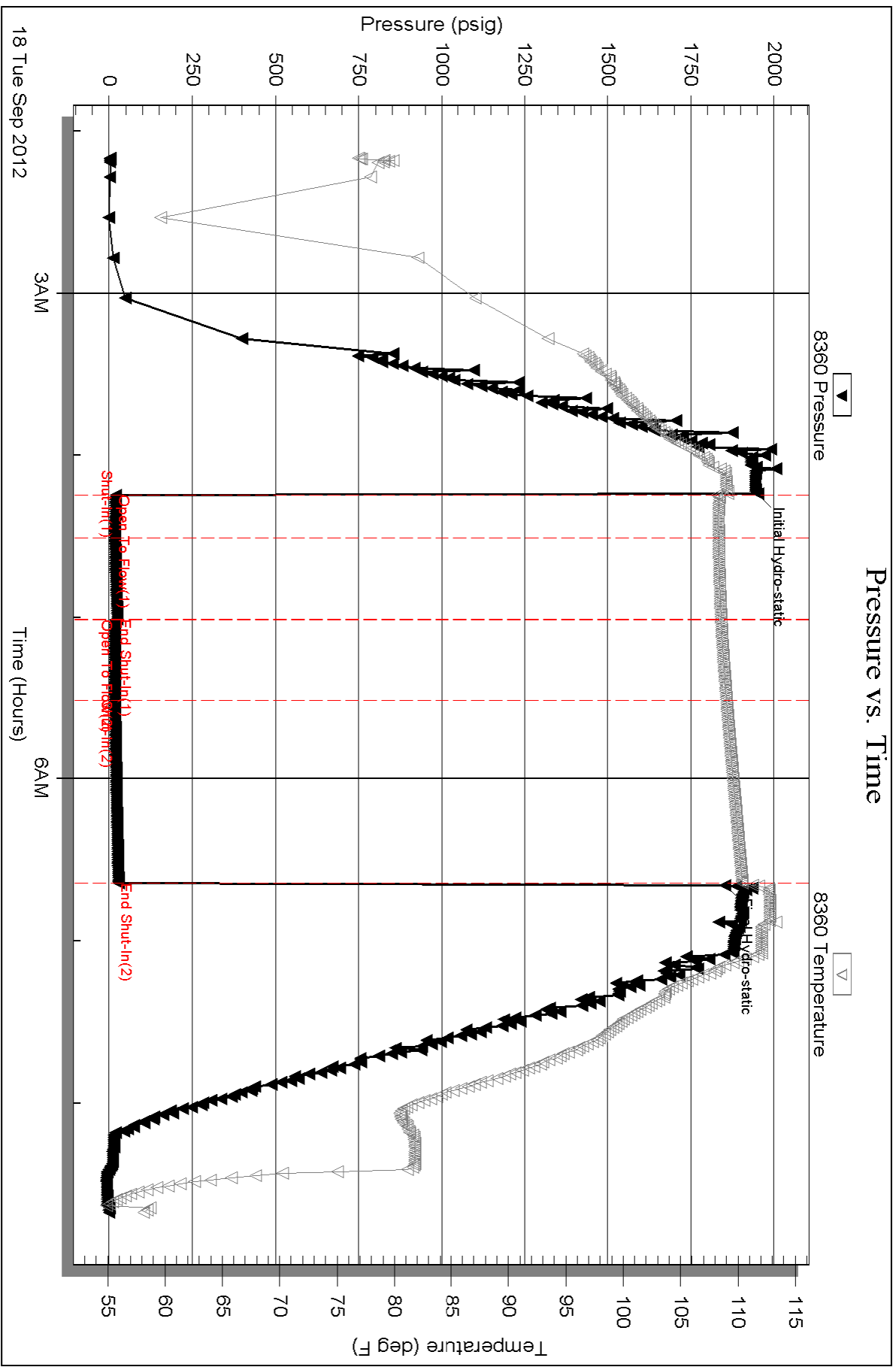
Serial #: 8360

Inside

Shakespeare Oil Co. Inc

Peterson # 2-8

DST Test Number: 2



Triobite Testing, Inc

Ref. No: 48844

Printed: 2012.09.18 @ 09:53:39