



**TRILOBITE  
TESTING, INC.**

# DRILL STEM TEST REPORT

Shakespeare Oil Co. Inc

**8-13s-32w Logan Co. KS**

202 W. Main St.  
Salem IL 62881

**Peterson # 2-8**

Job Ticket: 48846

**DST#: 4**

ATTN: Steve Davis

Test Start: 2012.09.19 @ 15:34:00

## GENERAL INFORMATION:

Formation: **LKC " J - K "**

Deviated: No Whipstock: ft (KB)

Time Tool Opened: 17:09:40

Time Test Ended: 20:39:54

Test Type: Conventional Bottom Hole (Reset)

Tester: Will MacLean

Unit No: 40

**Interval: 4165.00 ft (KB) To 4225.00 ft (KB) (TVD)**

Reference Elevations: 2981.00 ft (KB)

Total Depth: 4225.00 ft (KB) (TVD)

2971.00 ft (CF)

Hole Diameter: 7.88 inches Hole Condition: Good

KB to GR/CF: 10.00 ft

**Serial #: 8360**

**Inside**

Press @ Run Depth: 26.67 psig @ 4166.00 ft (KB)

Capacity: 8000.00 psig

Start Date: 2012.09.19

End Date: 2012.09.19

Last Calib.: 2012.09.19

Start Time: 15:34:00

End Time: 20:39:54

Time On Btm: 2012.09.19 @ 17:09:25

Time Off Btm: 2012.09.19 @ 19:02:10

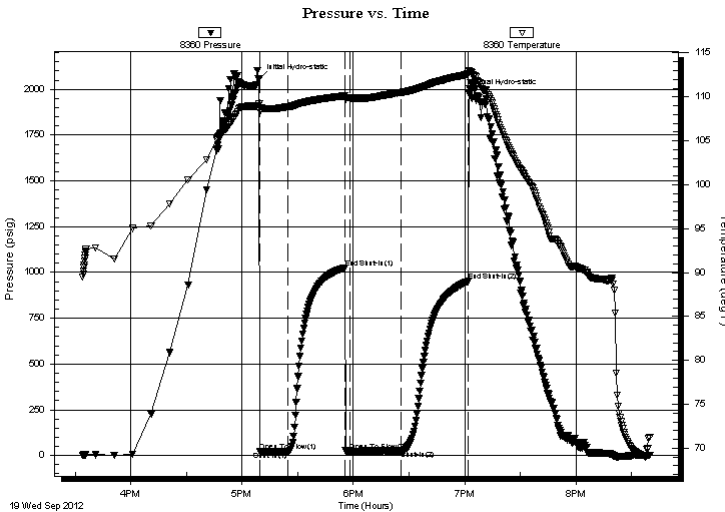
**TEST COMMENT:** IF- Weak Surface Blow 1/2"

IS- No Blow

FF- No Blow

IS- No Blow

## PRESSURE SUMMARY



Time (Min.)	Pressure (psig)	Temp (deg F)	Annotation
0	2057.16	109.23	Initial Hydro-static
1	22.87	108.36	Open To Flow (1)
16	22.26	108.86	Shut-In(1)
46	1024.74	110.13	End Shut-In(1)
49	24.72	109.88	Open To Flow (2)
77	26.67	110.50	Shut-In(2)
113	950.75	112.58	End Shut-In(2)
113	1976.68	113.02	Final Hydro-static

## Recovery

Length (ft)	Description	Volume (bbl)
14.00	GOCM 7%g 11%oil 82%m	0.20
1.00	GO 4%g 96%oil	0.01

\* Recovery from multiple tests

## Gas Rates

Choke (inches)	Pressure (psig)	Gas Rate (Mcf/d)



**TRILOBITE  
TESTING, INC.**

# DRILL STEM TEST REPORT

**FLUID SUMMARY**

Shakespeare Oil Co. Inc

**8-13s-32w Logan Co. KS**

202 W. Main St.  
Salem IL 62881

**Peterson # 2-8**

Job Ticket: 48846

**DST#: 4**

ATTN: Steve Davis

Test Start: 2012.09.19 @ 15:34:00

## Mud and Cushion Information

Mud Type: Gel Chem

Cushion Type:

Oil API:

deg API

Mud Weight: 9.00 lb/gal

Cushion Length:

ft

Water Salinity:

ppm

Viscosity: 55.00 sec/qt

Cushion Volume:

bbbl

Water Loss: 8.77 in<sup>3</sup>

Gas Cushion Type:

Resistivity: ohm.m

Gas Cushion Pressure:

psig

Salinity: 3500.00 ppm

Filter Cake: 1.00 inches

## Recovery Information

Recovery Table

Length ft	Description	Volume bbl
14.00	GOCM 7%g 11%oil 82%m	0.196
1.00	GO 4%g 96%oil	0.014

Total Length: 15.00 ft      Total Volume: 0.210 bbl

Num Fluid Samples: 0

Num Gas Bombs: 0

Serial #:

Laboratory Name:

Laboratory Location:

Recovery Comments:

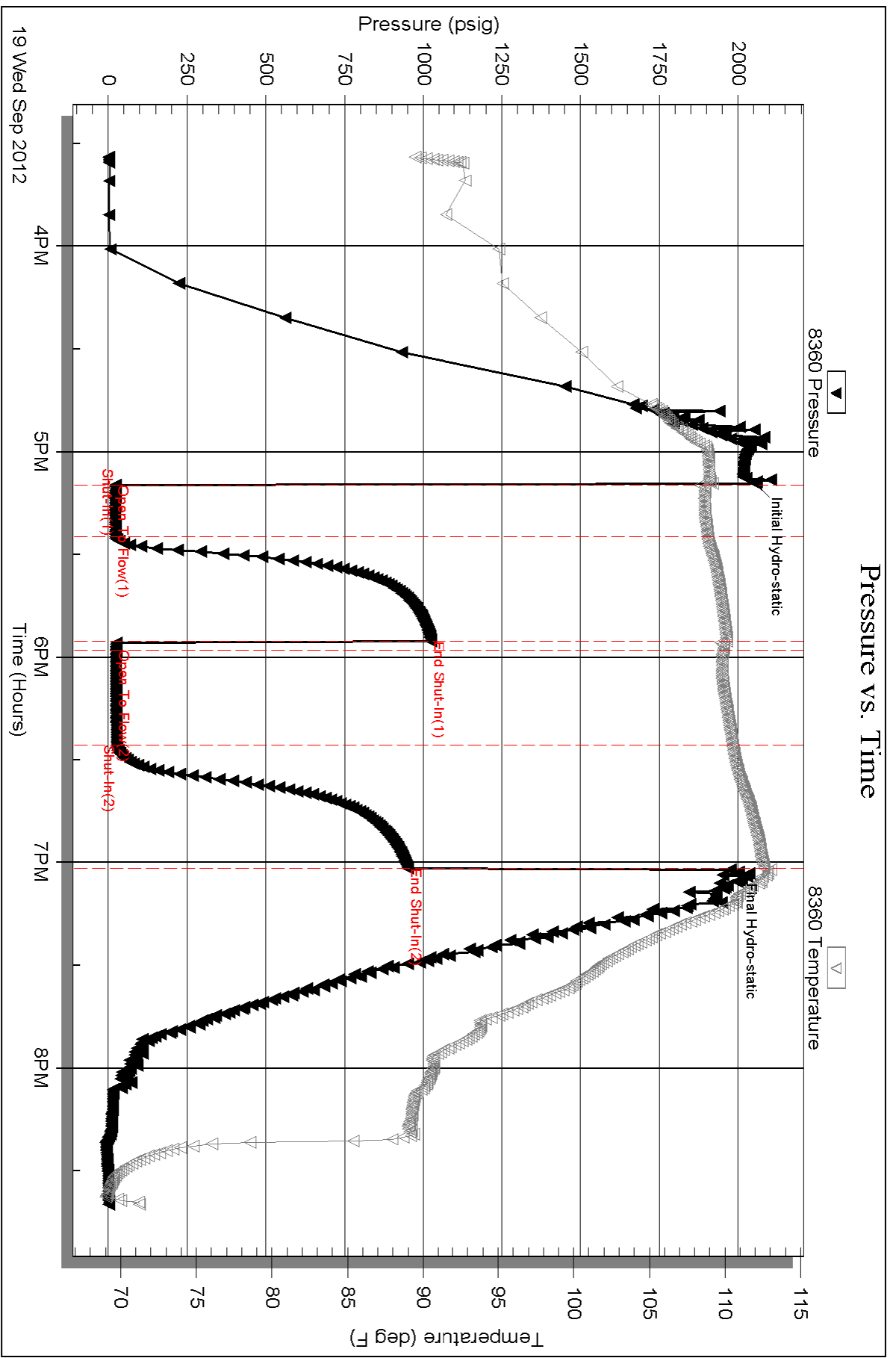
Serial #: 8360

Inside

Shakespeare Oil Co. Inc

Peterson # 2-8

DST Test Number: 4



Triobite Testing, Inc

Ref. No: 48846

Printed: 2012.09.20 @ 07:51:28