



TRILOBITE TESTING, INC

DRILL STEM TEST REPORT

Shakespeare Oil Co. Inc

8-13s-32w Logan Co. KS

202 W. Main St.
Salem IL 62881

Peterson # 2-8

Job Ticket: 48849

DST#: 7

ATTN: Steve Davis

Test Start: 2012.09.22 @ 04:44:00

GENERAL INFORMATION:

Formation: **Johnson**

Deviated: No Whipstock: ft (KB)

Time Tool Opened: 07:03:25

Time Test Ended: 12:03:09

Test Type: Conventional Bottom Hole (Reset)

Tester: Will MacLean

Unit No: 40

Interval: 4504.00 ft (KB) To 4550.00 ft (KB) (TVD)

Reference Elevations: 2981.00 ft (KB)

Total Depth: 4550.00 ft (KB) (TVD)

2971.00 ft (CF)

Hole Diameter: 7.88 inches Hole Condition: Good

KB to GR/CF: 10.00 ft

Serial #: 8360

Inside

Press @ Run Depth: 19.68 psig @ 4505.00 ft (KB)

Capacity: 8000.00 psig

Start Date: 2012.09.22

End Date:

2012.09.22

Last Calib.:

2012.09.22

Start Time: 04:44:00

End Time:

12:03:09

Time On Btm:

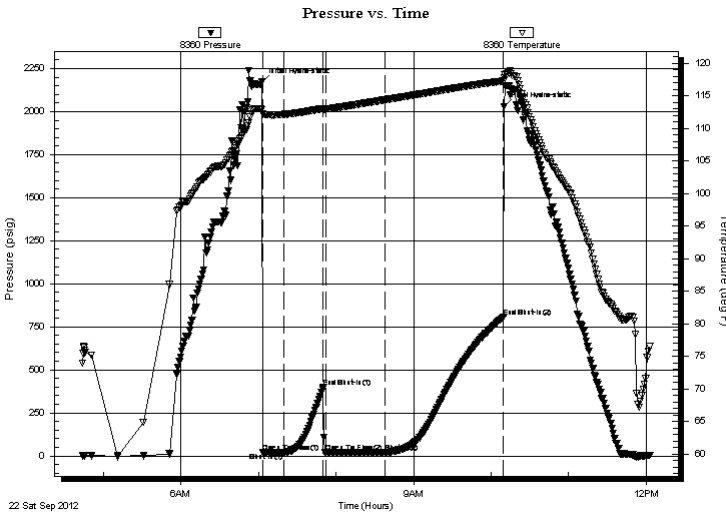
2012.09.22 @ 07:02:40

Time Off Btm:

2012.09.22 @ 10:10:09

TEST COMMENT: IF- Weak Surface Blow
IS- No Blow
FF- Very Weak Surface Blow Died in 2 1/4min
FS- No Blow

PRESSURE SUMMARY



Time (Min.)	Pressure (psig)	Temp (deg F)	Annotation
0	2170.62	112.89	Initial Hydro-static
1	20.99	112.15	Open To Flow (1)
17	19.05	112.13	Shut-In(1)
48	398.78	113.05	End Shut-In(1)
50	21.16	112.94	Open To Flow (2)
95	19.68	114.36	Shut-In(2)
187	807.91	117.26	End Shut-In(2)
188	2028.27	117.81	Final Hydro-static

Recovery

Length (ft)	Description	Volume (bbl)
1.00	100% m w with Skim of Oil on Top	0.01

* Recovery from multiple tests

Gas Rates

Choke (inches)	Pressure (psig)	Gas Rate (Mcf/d)



**TRILOBITE
TESTING, INC**

DRILL STEM TEST REPORT

FLUID SUMMARY

Shakespeare Oil Co. Inc

8-13s-32w Logan Co. KS

202 W. Main St.
Salem IL 62881

Peterson # 2-8

Job Ticket: 48849

DST#: 7

ATTN: Steve Davis

Test Start: 2012.09.22 @ 04:44:00

Mud and Cushion Information

Mud Type: Gel Chem

Cushion Type:

Oil API:

deg API

Mud Weight: 9.00 lb/gal

Cushion Length:

ft

Water Salinity:

ppm

Viscosity: 48.00 sec/qt

Cushion Volume:

bbbl

Water Loss: 6.39 in³

Gas Cushion Type:

Resistivity: ohm.m

Gas Cushion Pressure:

psig

Salinity: 3500.00 ppm

Filter Cake: 1.00 inches

Recovery Information

Recovery Table

Length ft	Description	Volume bbl
1.00	100% m with Skim of Oil on Top	0.014

Total Length: 1.00 ft Total Volume: 0.014 bbl

Num Fluid Samples: 0

Num Gas Bombs: 0

Serial #:

Laboratory Name:

Laboratory Location:

Recovery Comments:

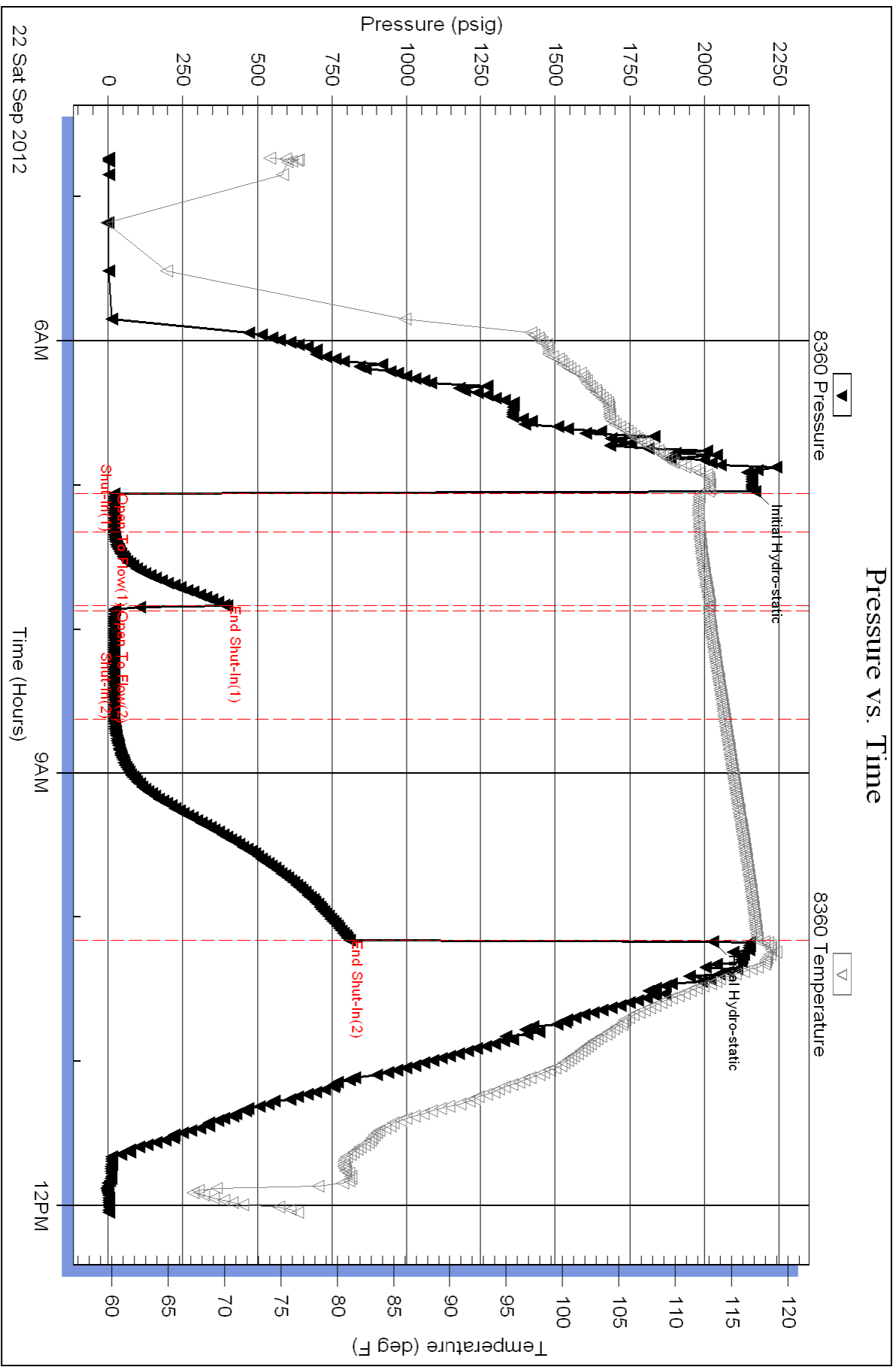
Serial #: 8360

Inside

Shakespeare Oil Co. Inc

Peterson # 2-8

DST Test Number: 7



Triobite Testing, Inc

Ref. No: 48849

Printed: 2012.09.22 @ 14:43:53