



**TRILOBITE TESTING, INC.**

# DRILL STEM TEST REPORT

Abercrombie Energy LLC.

**26-10s-18w Rooks**

10209 W. Central  
STE 2  
Wichita Ks. 67212  
ATTN: Steve Murphy

**Rouback #1-26**

Job Ticket: 49314

**DST#: 3**

Test Start: 2012.09.20 @ 22:33:05

## GENERAL INFORMATION:

Formation: **LKC" E,F,G"**

Deviated: No Whipstock: ft (KB)

Time Tool Opened: 00:25:30

Time Test Ended: 05:08:20

Test Type: Conventional Bottom Hole (Reset)

Tester: Andy Carreira

Unit No: 39

**Interval: 3374.00 ft (KB) To 3410.00 ft (KB) (TVD)**

Reference Elevations: 2076.00 ft (KB)

Total Depth: 3410.00 ft (KB) (TVD)

2066.00 ft (CF)

Hole Diameter: 7.88 inches Hole Condition: Poor

KB to GR/CF: 10.00 ft

**Serial #: 8372 Outside**

Press @ RunDepth: 52.49 psig @ 3375.00 ft (KB)

Capacity: 8000.00 psig

Start Date: 2012.09.20

End Date:

2012.09.21

Last Calib.:

2012.09.21

Start Time:

22:33:05

End Time:

05:08:20

Time On Btm:

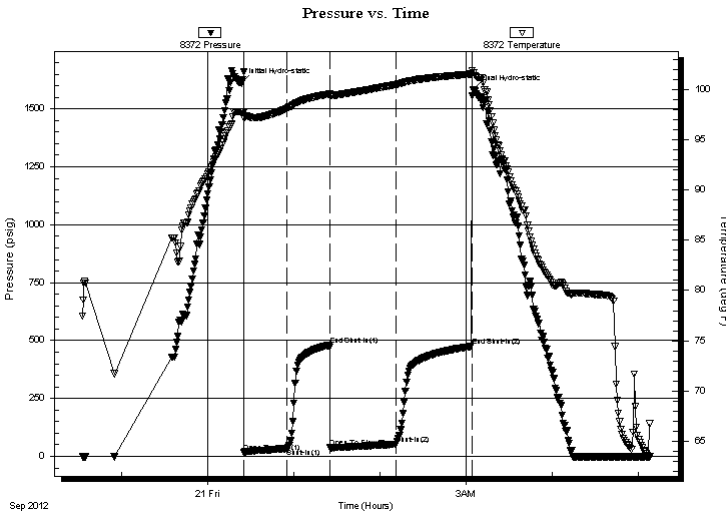
2012.09.21 @ 00:24:00

Time Off Btm:

2012.09.21 @ 03:04:59

**TEST COMMENT:** IF:(30min) Weak surface blow  
IS:(30min) No Return  
FF:(45min) Weak surface blow  
FS:(45min) No Return

## PRESSURE SUMMARY



Time (Min.)	Pressure (psig)	Temp (deg F)	Annotation
0	1612.27	97.77	Initial Hydro-static
2	19.11	97.19	Open To Flow (1)
32	33.95	98.14	Shut-In(1)
61	481.37	99.58	End Shut-In(1)
62	37.71	99.42	Open To Flow (2)
107	52.49	100.52	Shut-In(2)
160	474.96	101.57	End Shut-In(2)
161	1582.67	101.72	Final Hydro-static

## Recovery

Length (ft)	Description	Volume (bbl)
65.00	MW m=40% w=60%	0.91
5.00	CO o=100%	0.07

\* Recovery from multiple tests

## Gas Rates

	Choke (inches)	Pressure (psig)	Gas Rate (Mcf/d)



**TRILOBITE  
TESTING, INC.**

# DRILL STEM TEST REPORT

**FLUID SUMMARY**

Abercrombie Energy LLC.

**26-10s-18w Rooks**

10209 W. Central  
STE 2  
Wichita Ks. 67212  
ATTN: Steve Murphy

**Rouback #1-26**

Job Ticket: 49314

**DST#: 3**

Test Start: 2012.09.20 @ 22:33:05

## Mud and Cushion Information

Mud Type: Gel Chem

Mud Weight: 9.00 lb/gal

Viscosity: 54.00 sec/qt

Water Loss: 7.40 in<sup>3</sup>

Resistivity: ohm.m

Salinity: 2900.00 ppm

Filter Cake: inches

Cushion Type:

Cushion Length: ft

Cushion Volume: bbl

Gas Cushion Type:

Gas Cushion Pressure: psig

Oil API:

Water Salinity: deg API

ppm

## Recovery Information

Recovery Table

Length ft	Description	Volume bbl
65.00	MW m=40% w=60%	0.912
5.00	CO o=100%	0.070

Total Length: 70.00 ft      Total Volume: 0.982 bbl

Num Fluid Samples: 0

Num Gas Bombs: 0

Serial #:

Laboratory Name:

Laboratory Location:

Recovery Comments:

