



**TRILOBITE  
TESTING, INC**

# DRILL STEM TEST REPORT

Berexco LLC  
2020 N Bramblewood  
Wichita KS 67206-1094  
ATTN: David Gould

**29-22-22 Hodgeman, Ks**

**Kay 1**

Job Ticket: 49295

**DST#: 1**

Test Start: 2012.08.20 @ 21:15:38

## GENERAL INFORMATION:

Formation: **Base KC**  
 Deviated: No Whipstock: ft (KB)  
 Test Type: Conventional Bottom Hole (Initial)  
 Time Tool Opened: 00:59:08  
 Tester: Brian Fairbank  
 Time Test Ended: 05:22:38  
 Unit No: 41  
 Interval: **4227.00 ft (KB) To 4258.00 ft (KB) (TVD)**  
 Reference Elevations: 2319.00 ft (KB)  
 Total Depth: 4258.00 ft (KB) (TVD)  
 2306.00 ft (CF)  
 Hole Diameter: 7.88 inches  
 Hole Condition: Good  
 KB to GR/CF: 13.00 ft

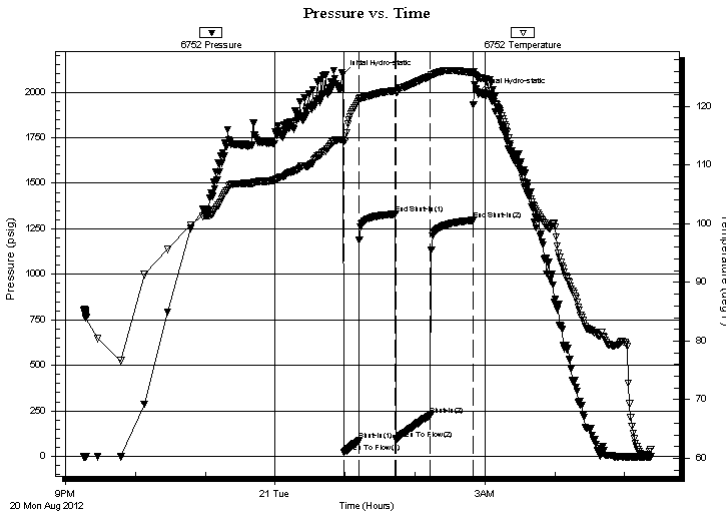
**Serial #: 6752**

**Inside**

Press @ Run Depth: 226.64 psig @ 4230.00 ft (KB) Capacity: 8000.00 psig  
 Start Date: 2012.08.20 End Date: 2012.08.21 Last Calib.: 2012.08.21  
 Start Time: 21:15:39 End Time: 05:22:38 Time On Btm: 2012.08.21 @ 00:58:08  
 Time Off Btm: 2012.08.21 @ 02:53:38

**TEST COMMENT:** IFP - BOB 9 min  
 ISI - no blow back  
 FFP - BOB 12 min  
 FSI - no blow back

## PRESSURE SUMMARY



Time (Min.)	Pressure (psig)	Temp (deg F)	Annotation
0	2095.78	114.32	Initial Hydro-static
1	21.91	114.06	Open To Flow (1)
14	86.06	120.97	Shut-In(1)
45	1330.58	122.66	End Shut-In(1)
46	92.29	122.43	Open To Flow (2)
75	226.64	125.09	Shut-In(2)
112	1296.62	125.72	End Shut-In(2)
116	1995.66	124.96	Final Hydro-static

## Recovery

Length (ft)	Description	Volume (bbl)
435.00	MW 90%W, 10%M	6.10

## Gas Rates

	Choke (inches)	Pressure (psig)	Gas Rate (Mcf/d)



**TRILOBITE  
TESTING, INC**

**DRILL STEM TEST REPORT**

**FLUID SUMMARY**

Berexco LLC  
2020 N Bramblewood  
Wichita KS 67206-1094  
ATTN: David Gould

**29-22-22 Hodgeman, Ks**  
**Kay 1**  
Job Ticket: 49295      **DST#: 1**  
Test Start: 2012.08.20 @ 21:15:38

**Mud and Cushion Information**

Mud Type: Gel Chem	Cushion Type:	Oil API:	deg API
Mud Weight: 9.00 lb/gal	Cushion Length: ft	Water Salinity:	96000 ppm
Viscosity: 43.00 sec/qt	Cushion Volume: bbl		
Water Loss: 10.39 in <sup>3</sup>	Gas Cushion Type:		
Resistivity: ohm.m	Gas Cushion Pressure: psig		
Salinity: 5000.00 ppm			
Filter Cake: inches			

**Recovery Information**

Recovery Table

Length ft	Description	Volume bbl
435.00	MW 90%W, 10%M	6.102

Total Length: 435.00 ft      Total Volume: 6.102 bbl  
Num Fluid Samples: 0      Num Gas Bombs: 0      Serial #:  
Laboratory Name:      Laboratory Location:  
Recovery Comments:

