



**TRILOBITE
TESTING, INC**

DRILL STEM TEST REPORT

Berexco LLC
2020 N Bramblewood
Wichita KS 67206-1094
ATTN: David Gould

29-22-22 Hodgeman, Ks

Kay 1

Job Ticket: 49296

DST#: 2

Test Start: 2012.08.22 @ 06:04:15

GENERAL INFORMATION:

Formation: **Lower Ft. Scott**
 Deviated: No Whipstock: ft (KB)
 Time Tool Opened: 09:59:45
 Time Test Ended: 14:58:45
 Interval: **4452.00 ft (KB) To 4470.00 ft (KB) (TVD)**
 Total Depth: 4470.00 ft (KB) (TVD)
 Hole Diameter: 7.88 inches Hole Condition: Good
 Test Type: Conventional Bottom Hole (Reset)
 Tester: Brian Fairbank
 Unit No: 41
 Reference Elevations: 2319.00 ft (KB)
 2306.00 ft (CF)
 KB to GR/CF: 13.00 ft

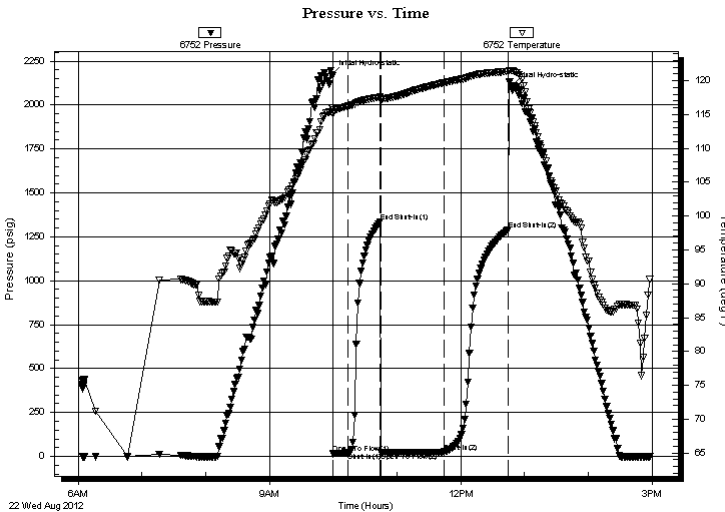
Serial #: 6752

Inside

Press @ Run Depth: 25.84 psig @ 4457.00 ft (KB) Capacity: 8000.00 psig
 Start Date: 2012.08.22 End Date: 2012.08.22 Last Calib.: 2012.08.22
 Start Time: 06:04:16 End Time: 14:58:45 Time On Btm: 2012.08.22 @ 09:58:45
 Time Off Btm: 2012.08.22 @ 12:47:15

TEST COMMENT: IFP - weak sur blow throughout
 ISI - no blow back
 FFP - no blow
 FSI - no blow back

PRESSURE SUMMARY



Time (Min.)	Pressure (psig)	Temp (deg F)	Annotation
0	2173.71	115.93	Initial Hydro-static
1	15.44	115.06	Open To Flow (1)
16	20.73	116.24	Shut-In(1)
46	1335.58	117.58	End Shut-In(1)
47	23.47	117.34	Open To Flow (2)
106	25.84	119.69	Shut-In(2)
166	1291.10	121.36	End Shut-In(2)
169	2107.11	121.49	Final Hydro-static

Recovery

Length (ft)	Description	Volume (bbl)
20.00	O spt M 100%M	0.28

* Recovery from multiple tests

Gas Rates

Choke (inches)	Pressure (psig)	Gas Rate (Mcf/d)



**TRILOBITE
TESTING, INC**

DRILL STEM TEST REPORT

FLUID SUMMARY

Berexco LLC
2020 N Bramblewood
Wichita KS 67206-1094
ATTN: David Gould

29-22-22 Hodgeman, Ks
Kay 1
Job Ticket: 49296 **DST#: 2**
Test Start: 2012.08.22 @ 06:04:15

Mud and Cushion Information

Mud Type: Gel Chem	Cushion Type:	Oil API:	deg API
Mud Weight: 9.00 lb/gal	Cushion Length: ft	Water Salinity:	ppm
Viscosity: 46.00 sec/qt	Cushion Volume: bbl		
Water Loss: 9.19 in ³	Gas Cushion Type:		
Resistivity: ohm.m	Gas Cushion Pressure: psig		
Salinity: 4000.00 ppm			
Filter Cake: inches			

Recovery Information

Recovery Table

Length ft	Description	Volume bbl
20.00	O spt M 100%M	0.281

Total Length: 20.00 ft Total Volume: 0.281 bbl

Num Fluid Samples: 0 Num Gas Bombs: 0 Serial #:

Laboratory Name: Laboratory Location:

Recovery Comments:

Pressure vs. Time

