



**TRILOBITE TESTING, INC.**

# DRILL STEM TEST REPORT

Berexco LLC  
 2020 N Bramblewood  
 Wichita KS 67206-1094  
 ATTN: David Gould

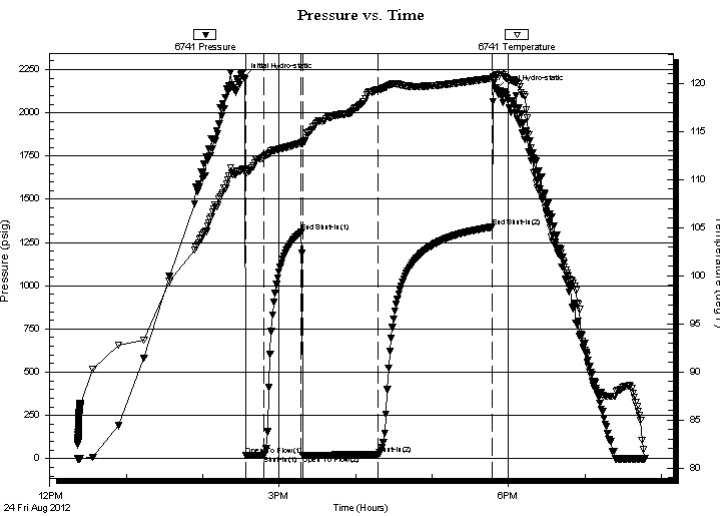
**29-22-22 Hodgeman, Ks**  
**Kay 1**  
 Job Ticket: 49299 **DST#: 5**  
 Test Start: 2012.08.24 @ 12:21:46

## GENERAL INFORMATION:

Formation: **MISS**  
 Deviated: No Whipstock: ft (KB)  
 Time Tool Opened: 14:33:46  
 Time Test Ended: 19:47:16  
 Interval: **4543.00 ft (KB) To 4553.00 ft (KB) (TVD)**  
 Total Depth: 4553.00 ft (KB) (TVD)  
 Hole Diameter: 7.88 inches Hole Condition: Good  
 Test Type: Conventional Bottom Hole (Reset)  
 Tester: Brian Fairbank  
 Unit No: 41  
 Reference Elevations: 2319.00 ft (KB)  
 2306.00 ft (CF)  
 KB to GR/CF: 13.00 ft

**Serial #: 6741 Outside**  
 Press @ Run Depth: 22.95 psig @ 4544.00 ft (KB) Capacity: 8000.00 psig  
 Start Date: 2012.08.24 End Date: 2012.08.24 Last Calib.: 2012.08.24  
 Start Time: 12:21:47 End Time: 19:47:16 Time On Btm: 2012.08.24 @ 14:31:46  
 Time Off Btm: 2012.08.24 @ 17:50:16

**TEST COMMENT:** IFP - weak sur blow throughout  
 ISI - no blow back  
 FFP - no blow  
 FSI - no blow back



## PRESSURE SUMMARY

Time (Min.)	Pressure (psig)	Temp (deg F)	Annotation
0	2205.74	111.10	Initial Hydro-static
2	18.31	110.53	Open To Flow (1)
16	19.00	112.33	Shut-In(1)
46	1309.98	113.80	End Shut-In(1)
47	20.02	113.77	Open To Flow (2)
106	22.95	119.34	Shut-In(2)
195	1339.04	120.53	End Shut-In(2)
199	2134.46	120.84	Final Hydro-static

## Recovery

Length (ft)	Description	Volume (bbl)
30.00	DRL MUD 100%	0.42
5.00	SOCM 5%O, 95%M	0.07

\* Recovery from multiple tests

## Gas Rates

Choke (inches)	Pressure (psig)	Gas Rate (Mcf/d)



**TRILOBITE  
TESTING, INC.**

# DRILL STEM TEST REPORT

**FLUID SUMMARY**

Berexco LLC  
2020 N Bramblewood  
Wichita KS 67206-1094  
ATTN: David Gould

**29-22-22 Hodgeman, Ks**  
**Kay 1**  
Job Ticket: 49299      **DST#: 5**  
Test Start: 2012.08.24 @ 12:21:46

## Mud and Cushion Information

Mud Type: Gel Chem	Cushion Type:	Oil API:	deg API
Mud Weight: 9.00 lb/gal	Cushion Length: ft	Water Salinity:	ppm
Viscosity: 47.00 sec/qt	Cushion Volume: bbl		
Water Loss: 9.19 in <sup>3</sup>	Gas Cushion Type:		
Resistivity: ohm.m	Gas Cushion Pressure: psig		
Salinity: 5000.00 ppm			
Filter Cake: inches			

## Recovery Information

Recovery Table

Length ft	Description	Volume bbl
30.00	DRL MUD 100%	0.421
5.00	SOCM 5%O, 95%M	0.070

Total Length: 35.00 ft      Total Volume: 0.491 bbl  
Num Fluid Samples: 0      Num Gas Bombs: 0      Serial #:  
Laboratory Name:      Laboratory Location:  
Recovery Comments:

