



TRILOBITE TESTING, INC.

DRILL STEM TEST REPORT

Shakespeare Oil Co.
 202 W Main St.
 Salem, IL 62881
 ATTN: Steve Davis

17-13s-32w-Logan KS

Campbell #2-17

Job Ticket: 50012

DST#: 2

Test Start: 2012.09.05 @ 18:30:26

GENERAL INFORMATION:

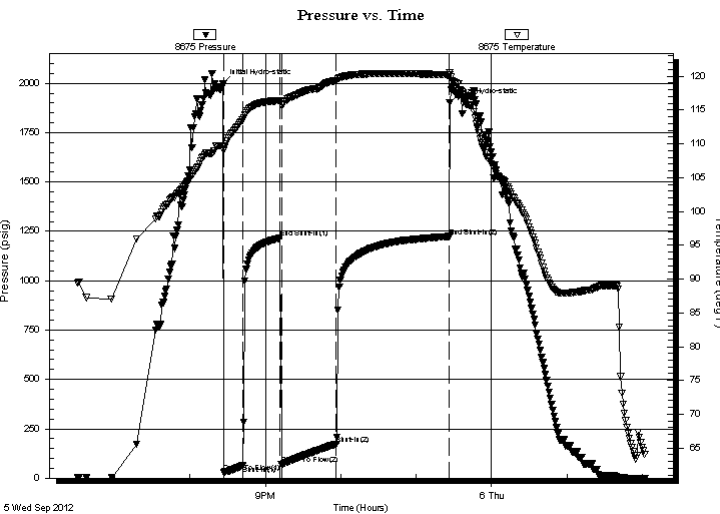
Formation: **LKC-"D&E"**
 Deviated: No Whipstock: ft (KB)
 Time Tool Opened: 20:26:41
 Time Test Ended: 02:02:26
 Interval: **4078.00 ft (KB) To 4098.00 ft (KB) (TVD)**
 Total Depth: 4098.00 ft (KB) (TVD)
 Hole Diameter: 7.88 inches Hole Condition: Good
 Test Type: Conventional Bottom Hole (Reset)
 Tester: Tate Lang
 Unit No: 46
 Reference Elevations: 3037.50 ft (KB)
 3027.00 ft (CF)
 KB to GR/CF: 10.50 ft

Serial #: 8675

Inside

Press @ Run Depth: 172.29 psig @ 4079.00 ft (KB) Capacity: 8000.00 psig
 Start Date: 2012.09.05 End Date: 2012.09.06 Last Calib.: 2012.09.06
 Start Time: 18:30:41 End Time: 02:02:26 Time On Btm: 2012.09.05 @ 20:26:26
 Time Off Btm: 2012.09.05 @ 23:26:41

TEST COMMENT: IF-B.O.B. 5min.
 ISI-Bled Off For 5mins-Weak Surface Blow Built To 2 1/4ins. And Stayed
 FF-B.O.B. 7mins.
 FSI-Bled Off For 5mins.-Fair Surface Blow Built To 5ins. Died Back To 4ins. In 90mins.



PRESSURE SUMMARY

Time (Min.)	Pressure (psig)	Temp (deg F)	Annotation
0	1997.24	109.74	Initial Hydro-static
1	28.50	109.04	Open To Flow (1)
16	63.25	113.55	Shut-In(1)
46	1215.75	116.39	End Shut-In(1)
47	69.16	115.73	Open To Flow (2)
90	172.29	119.34	Shut-In(2)
180	1224.14	120.18	End Shut-In(2)
181	1901.74	120.57	Final Hydro-static

Recovery

Length (ft)	Description	Volume (bbl)
206.00	5%G 95%O	2.89
124.00	25%G 75% O	1.74
62.00	30%G 30%M 40%O	0.87
0.00	1860 G.I.P.	0.00

* Recovery from multiple tests

Gas Rates

	Choke (inches)	Pressure (psig)	Gas Rate (Mcf/d)



**TRILOBITE
TESTING, INC.**

DRILL STEM TEST REPORT

FLUID SUMMARY

Shakespeare Oil Co.

17-13s-32w-Logan KS

202 W Main St.
Salem, IL 62881

Campbell #2-17

Job Ticket: 50012

DST#: 2

ATTN: Steve Davis

Test Start: 2012.09.05 @ 18:30:26

Mud and Cushion Information

Mud Type: Gel Chem

Cushion Type:

Oil API:

36 deg API

Mud Weight: 9.00 lb/gal

Cushion Length:

ft

Water Salinity:

ppm

Viscosity: 58.00 sec/qt

Cushion Volume:

bbbl

Water Loss: 7.98 in³

Gas Cushion Type:

Resistivity: ohm.m

Gas Cushion Pressure:

psig

Salinity: 2000.00 ppm

Filter Cake: 1.00 inches

Recovery Information

Recovery Table

Length ft	Description	Volume bbbl
206.00	5%G 95%O	2.890
124.00	25%G 75% O	1.739
62.00	30%G 30%M 40%O	0.870
0.00	1860 G.I.P.	0.000

Total Length: 392.00 ft

Total Volume: 5.499 bbl

Num Fluid Samples: 0

Num Gas Bombs: 0

Serial #:

Laboratory Name:

Laboratory Location:

Recovery Comments:

Serial #: 8675

Inside

Shakespeare Oil Co.

Campbell #2-17

DST Test Number: 2

