



**TRILOBITE  
TESTING, INC.**

# DRILL STEM TEST REPORT

Mikol Oil, LLC  
1407 Washington Cir.  
Hays KS, 67601  
ATTN: Bob Stolzle

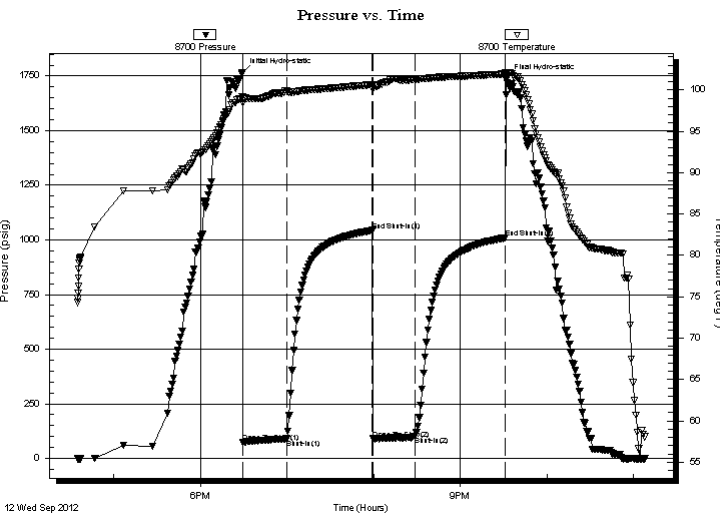
**33-10s-17w Rooks KS**  
**Schrandt # 1-33**  
Job Ticket: 49472      **DST#: 2**  
Test Start: 2012.09.12 @ 16:35:00

## GENERAL INFORMATION:

Formation: **"H-L"**  
Deviated: No Whipstock: ft (KB)      Test Type: Conventional Bottom Hole (Reset)  
Time Tool Opened: 18:29:30      Tester: Cody Bloedorn  
Time Test Ended: 23:08:00      Unit No: 42  
**Interval: 3430.00 ft (KB) To 3550.00 ft (KB) (TVD)**      Reference Elevations: 2082.00 ft (KB)  
Total Depth: 3550.00 ft (KB) (TVD)      2077.00 ft (CF)  
Hole Diameter: 7.88 inches Hole Condition: Fair      KB to GR/CF: 5.00 ft

**Serial #: 8700      Outside**  
Press @ Run Depth: 102.14 psig @ 3534.00 ft (KB)      Capacity: 8000.00 psig  
Start Date: 2012.09.12      End Date: 2012.09.12      Last Calib.: 2012.09.12  
Start Time: 16:35:05      End Time: 23:07:59      Time On Btm: 2012.09.12 @ 18:29:00  
Time Off Btm: 2012.09.12 @ 21:32:00

**TEST COMMENT:** 30 - IF- 1 1/4" Blow .  
60 - IS- No blow back.  
30 - FF- No blow  
60 - FS- No blow back.



## PRESSURE SUMMARY

Time (Min.)	Pressure (psig)	Temp (deg F)	Annotation
0	1766.40	99.19	Initial Hydro-static
1	72.44	98.40	Open To Flow (1)
31	89.22	99.90	Shut-In(1)
90	1043.28	100.64	End Shut-In(1)
91	89.50	100.06	Open To Flow (2)
120	102.14	101.27	Shut-In(2)
182	1009.08	101.93	End Shut-In(2)
183	1737.04	102.12	Final Hydro-static

## Recovery

Length (ft)	Description	Volume (bbl)
50.00	Mud - Oil Scum, 100%M	0.42

\* Recovery from multiple tests

## Gas Rates

Choke (inches)	Pressure (psig)	Gas Rate (Mcf/d)



**TRILOBITE  
TESTING, INC.**

**DRILL STEM TEST REPORT**

**FLUID SUMMARY**

Mikol Oil, LLC

**33-10s-17w Rooks KS**

1407 Washington Cir.  
Hays KS, 67601

**Schrandt # 1-33**

Job Ticket: 49472

**DST#: 2**

ATTN: Bob Stolzle

Test Start: 2012.09.12 @ 16:35:00

**Mud and Cushion Information**

Mud Type: Gel Chem

Cushion Type:

Oil API:

deg API

Mud Weight: 9.00 lb/gal

Cushion Length:

ft

Water Salinity:

ppm

Viscosity: 54.00 sec/qt

Cushion Volume:

bbbl

Water Loss: 7.60 in<sup>3</sup>

Gas Cushion Type:

Resistivity: ohm.m

Gas Cushion Pressure:

psig

Salinity: 5000.00 ppm

Filter Cake: inches

**Recovery Information**

Recovery Table

Length ft	Description	Volume bbl
50.00	Mud - Oil Scum, 100%M	0.419

Total Length: 50.00 ft      Total Volume: 0.419 bbl

Num Fluid Samples: 0

Num Gas Bombs: 0

Serial #:

Laboratory Name:

Laboratory Location:

Recovery Comments:

