



DRILL STEM TEST REPORT

Prepared For: **Palomino Petroleum, Inc.**

4924 SE 84th ST
Newton KS 67114-8827

ATTN: Ryan Seib

29-16s-26w Ness, KS

McKinnie-Schwartzkopf #1

Start Date: 2012.10.09 @ 18:55:00

End Date: 2012.10.10 @ 01:51:00

Job Ticket #: 48902 DST #: 1

Trilobite Testing, Inc
PO Box 362 Hays, KS 67601
ph: 785-625-4778 fax: 785-625-5620

Printed: 2012.10.17 @ 11:52:26

Palomino Petroleum, Inc.

McKinnie-Schwartzkopf #1

29-16s-26w Ness, KS

DST # 1

Lansing

2012.10.09



**TRILOBITE
TESTING, INC.**

DRILL STEM TEST REPORT

Palomino Petroleum, Inc.
4924 SE 84th ST
New ton KS 67114-8827
ATTN: Ryan Seib

McKinnie-Schwartzkopf #1

29-16s-26w Ness, KS

Job Ticket: 48902 **DST#: 1**

Test Start: 2012.10.09 @ 18:55:00

GENERAL INFORMATION:

Formation: **Lansing**
 Deviated: No Whipstock: ft (KB)
 Time Tool Opened: 21:12:45
 Time Test Ended: 01:51:00
 Interval: **4110.00 ft (KB) To 4184.00 ft (KB) (TVD)**
 Total Depth: 4184.00 ft (KB) (TVD)
 Hole Diameter: 7.88 inches Hole Condition: Fair
 Test Type: Conventional Bottom Hole (Initial)
 Tester: Jace McKinney
 Unit No: 46
 Reference Elevations: 2660.00 ft (KB)
 2650.00 ft (CF)
 KB to GR/CF: 10.00 ft

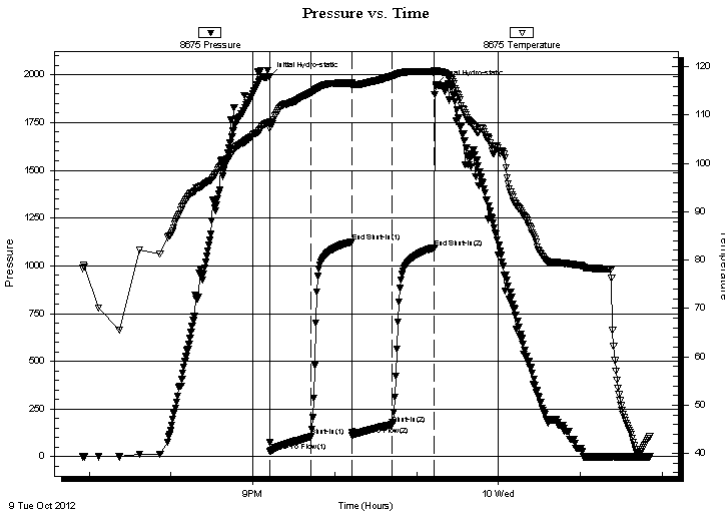
Serial #: 8675

Inside

Press @ Run Depth: 169.18 psig @ 4111.00 ft (KB) Capacity: 8000.00 psig
 Start Date: 2012.10.09 End Date: 2012.10.10 Last Calib.: 2012.10.10
 Start Time: 18:55:15 End Time: 01:51:00 Time On Btm: 2012.10.09 @ 21:12:15
 Time Off Btm: 2012.10.09 @ 23:14:30

TEST COMMENT: B.O.B. in 8 min.
 Bled off for 5 min. Built to 4 1/2" return blow
 B.O.B. in 5 1/2 min.
 Bled off for 5 min. Built to 8" return blow

PRESSURE SUMMARY



Time (Min.)	Pressure (psig)	Temp (deg F)	Annotation
0	1990.21	108.55	Initial Hydro-static
1	28.31	107.98	Open To Flow (1)
31	105.74	114.63	Shut-In(1)
60	1125.69	116.60	End Shut-In(1)
61	113.42	116.28	Open To Flow (2)
90	169.18	118.08	Shut-In(2)
121	1094.91	118.92	End Shut-In(2)
123	1948.28	119.11	Final Hydro-static

Recovery

Length (ft)	Description	Volume (bbl)
164.00	gcom 10%G 40%O 50%M	2.30
62.00	mcbow 20%M 20%G 30%O 30%W	0.87
189.00	ocgrmw 5%O 20%G 30%M 45%W	2.65
0.00	700 Feet Gas In Pipe	0.00

Gas Rates

Choke (inches)	Pressure (psig)	Gas Rate (Mcf/d)



**TRILOBITE
TESTING, INC.**

DRILL STEM TEST REPORT

TOOL DIAGRAM

Palomino Petroleum, Inc.
4924 SE 84th ST
New ton KS 67114-8827
ATTN: Ryan Seib

McKinnie-Schwartzkopf #1
29-16s-26w Ness, KS
Job Ticket: 48902 **DST#: 1**
Test Start: 2012.10.09 @ 18:55:00

Tool Information

Drill Pipe:	Length: 4110.54 ft	Diameter: 3.80 inches	Volume: 57.66 bbl	Tool Weight: 2500.00 lb
Heavy Wt. Pipe:	Length: 0.00 ft	Diameter: 0.00 inches	Volume: 0.00 bbl	Weight set on Packer: 25000.00 lb
Drill Collar:	Length: 0.00 ft	Diameter: 0.00 inches	Volume: 0.00 bbl	Weight to Pull Loose: 80000.00 lb
			<u>Total Volume: 57.66 bbl</u>	Tool Chased 0.00 ft
Drill Pipe Above KB:	28.04 ft			String Weight: Initial 70000.00 lb
Depth to Top Packer:	4110.00 ft			Final 73000.00 lb
Depth to Bottom Packer:	ft			
Interval between Packers:	74.00 ft			
Tool Length:	101.50 ft			
Number of Packers:	2	Diameter: 6.75 inches		

Tool Comments:

Tool Description	Length (ft)	Serial No.	Position	Depth (ft)	Accum. Lengths
-------------------------	--------------------	-------------------	-----------------	-------------------	-----------------------

Change Over Sub	1.00			4083.50	
Shut In Tool	5.00			4088.50	
Hydraulic tool	5.00			4093.50	
Jars	5.00			4098.50	
Safety Joint	2.50			4101.00	
Packer	5.00			4106.00	27.50 Bottom Of Top Packer
Packer	4.00			4110.00	
Stubb	1.00			4111.00	
Recorder	0.00	8675	Inside	4111.00	
Recorder	0.00	8650	Outside	4111.00	
Perforations	6.00			4117.00	
Change Over Sub	1.00			4118.00	
Drill Pipe	62.00			4180.00	
Change Over Sub	1.00			4181.00	
Bullnose	3.00			4184.00	74.00 Bottom Packers & Anchor

Total Tool Length: 101.50



**TRILOBITE
TESTING, INC.**

DRILL STEM TEST REPORT

FLUID SUMMARY

Palomino Petroleum, Inc.
4924 SE 84th ST
New ton KS 67114-8827
ATTN: Ryan Seib

McKinnie-Schwartzkopf #1
29-16s-26w Ness, KS
Job Ticket: 48902 **DST#: 1**
Test Start: 2012.10.09 @ 18:55:00

Mud and Cushion Information

Mud Type: Gel Chem	Cushion Type:	Oil API:	deg API
Mud Weight: 10.00 lb/gal	Cushion Length: ft	Water Salinity:	ppm
Viscosity: 43.00 sec/qt	Cushion Volume: bbl		
Water Loss: 9.17 in ³	Gas Cushion Type:		
Resistivity: ohm.m	Gas Cushion Pressure: psig		
Salinity: 1900.00 ppm			
Filter Cake: 1.00 inches			

Recovery Information

Recovery Table

Length ft	Description	Volume bbl
164.00	gcom 10%G 40%O 50%M	2.300
62.00	mcgow 20%M 20%G 30%O 30%W	0.870
189.00	ocgmw 5%O 20%G 30%M 45%W	2.651
0.00	700 Feet Gas In Pipe	0.000

Total Length: 415.00 ft Total Volume: 5.821 bbl
 Num Fluid Samples: 0 Num Gas Bombs: 0 Serial #:
 Laboratory Name: Laboratory Location:
 Recovery Comments: RW: .3 @ 35 F = 40,000

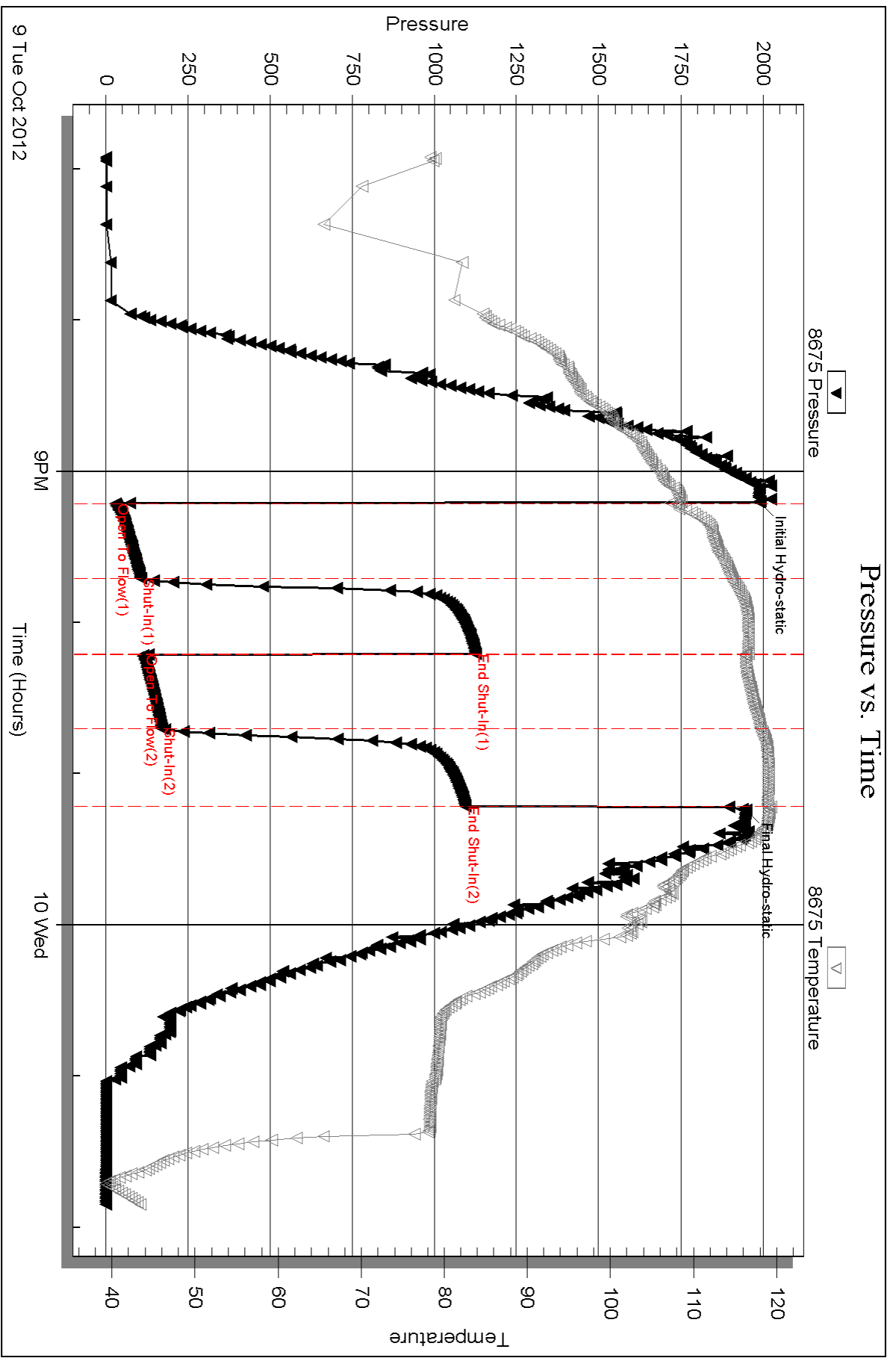
Serial #: 8675

Inside

Palomino Petroleum, Inc.

29-16s-26w Ness, KS

DST Test Number: 1



Triobite Testing, Inc

Ref. No: 48902

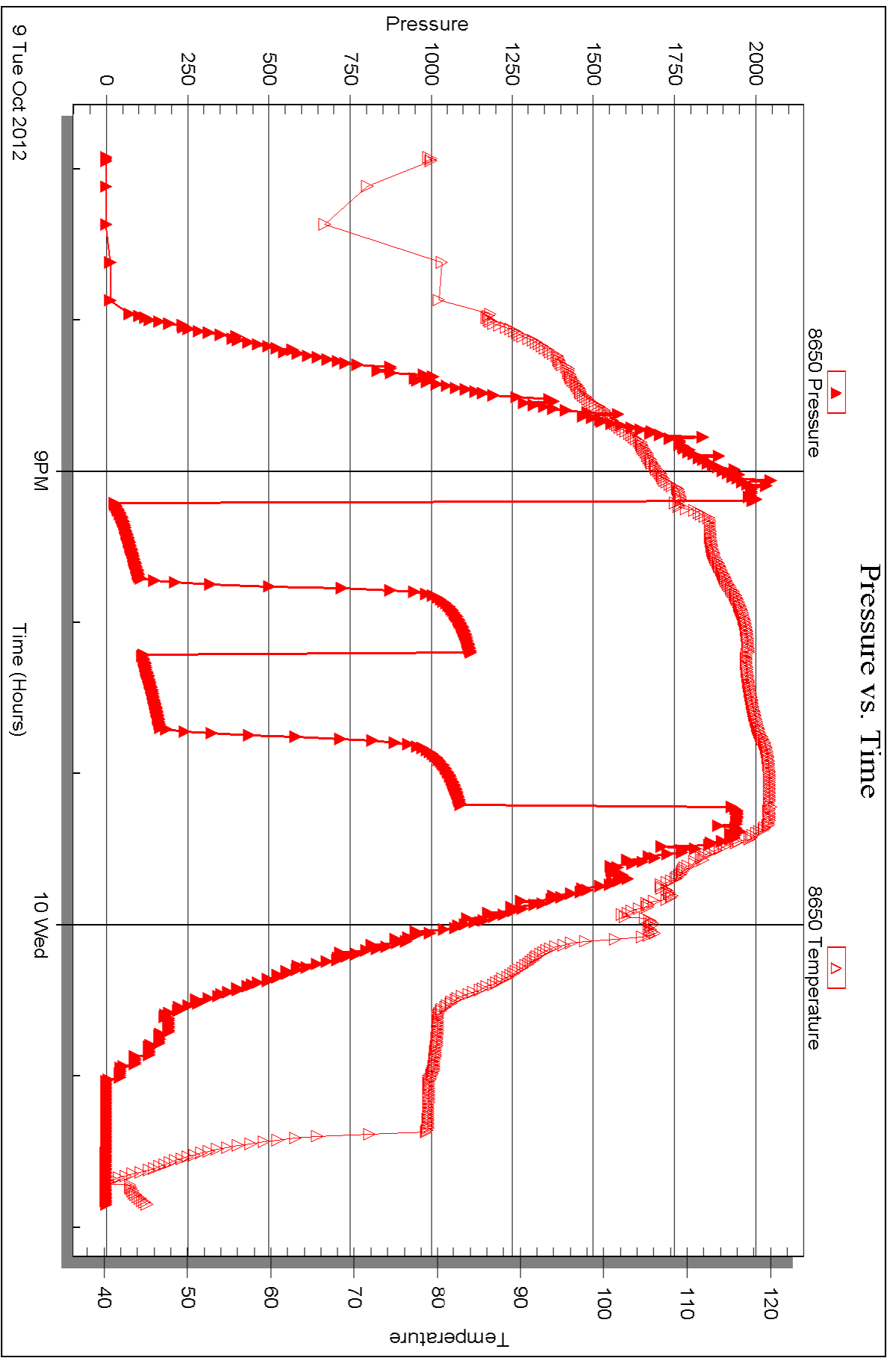
Printed: 2012.10.17 @ 11:52:30

Serial #: 8650

Outside Palomino Petroleum, Inc.

29-16s-26w Ness, KS

DST Test Number: 1



Triobite Testing, Inc

Ref. No: 48902

Printed: 2012.10.17 @ 11:52:31



DRILL STEM TEST REPORT

Prepared For: **Palomino Petroleum, Inc.**

4924 SE 84th ST
Newton KS 67114-8827

ATTN: Ryan Seib

29-16s-26w Ness, KS

McKinnie-Schwartzkopf #1

Start Date: 2012.10.10 @ 09:45:00

End Date: 2012.10.10 @ 17:03:30

Job Ticket #: 48903 DST #: 2

Trilobite Testing, Inc

PO Box 362 Hays, KS 67601

ph: 785-625-4778 fax: 785-625-5620

Printed: 2012.10.17 @ 11:51:31

Palomino Petroleum, Inc.

McKinnie-Schwartzkopf #1

29-16s-26w Ness, KS

DST # 2

Lansing

2012.10.10



**TRILOBITE
TESTING, INC.**

DRILL STEM TEST REPORT

Palomino Petroleum, Inc.
4924 SE 84th ST
New ton KS 67114-8827
ATTN: Ryan Seib

McKinnie-Schwartzkopf #1
29-16s-26w Ness, KS
Job Ticket: 48903 **DST#: 2**
Test Start: 2012.10.10 @ 09:45:00

GENERAL INFORMATION:

Formation: **Lansing**
Deviated: No Whipstock: ft (KB)
Time Tool Opened: 12:08:00
Time Test Ended: 17:03:30
Interval: **4181.00 ft (KB) To 4209.00 ft (KB) (TVD)**
Total Depth: 4209.00 ft (KB) (TVD)
Hole Diameter: 7.88 inches Hole Condition: Fair
Test Type: Conventional Bottom Hole (Reset)
Tester: Jace McKinney
Unit No: 46
Reference Elevations: 2660.00 ft (KB)
2650.00 ft (CF)
KB to GR/CF: 10.00 ft

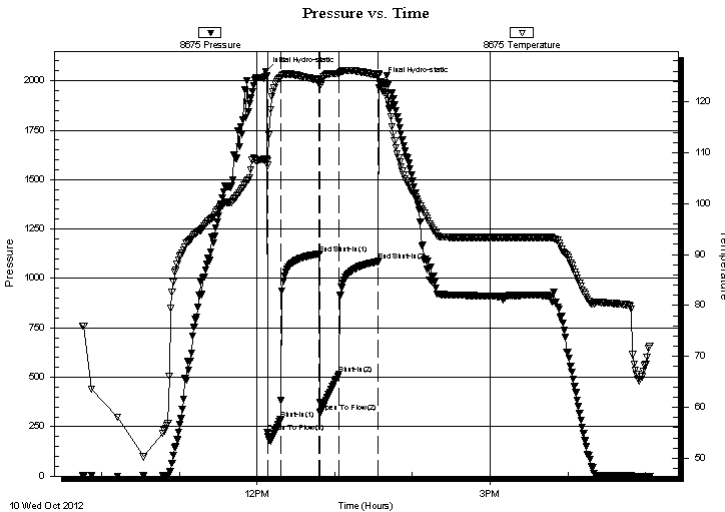
Serial #: 8675

Inside

Press @ Run Depth: 514.82 psig @ 4182.00 ft (KB) Capacity: 8000.00 psig
Start Date: 2012.10.10 End Date: 2012.10.10 Last Calib.: 2012.10.10
Start Time: 09:45:15 End Time: 17:03:30 Time On Btm: 2012.10.10 @ 12:06:45
Time Off Btm: 2012.10.10 @ 13:35:30

TEST COMMENT: B.O.B. in 30 seconds
Bled off for 5 min. B.O.B. in 8 1/2 min.
B.O.B. In 30 seconds
Bled off for 5 min. B.O.B. in 8 1/2 min.

PRESSURE SUMMARY



Time (Min.)	Pressure (psig)	Temp (deg F)	Annotation
0	2048.03	108.71	Initial Hydro-static
2	220.79	107.50	Open To Flow (1)
12	285.42	124.70	Shut-In(1)
42	1125.24	124.22	End Shut-In(1)
42	323.26	123.14	Open To Flow (2)
57	514.82	125.55	Shut-In(2)
87	1086.74	125.20	End Shut-In(2)
89	1994.28	122.91	Final Hydro-static

Recovery

Length (ft)	Description	Volume (bbl)
0.00	2294 Feet Gas In Pipe	0.00
1736.00	Clean Oil 15 barrels of oil vac out	24.35
124.00	w cgmo 5%w 10%g 15%m 70%o	1.74

* Recovery from multiple tests

Gas Rates

Choke (inches)	Pressure (psig)	Gas Rate (Mcf/d)



TRILOBITE TESTING, INC.

DRILL STEM TEST REPORT

Palomino Petroleum, Inc.
 4924 SE 84th ST
 Newton KS 67114-8827
 ATTN: Ryan Seib

McKinnie-Schwartzkopf #1
29-16s-26w Ness, KS
 Job Ticket: 48903 **DST#: 2**
 Test Start: 2012.10.10 @ 09:45:00

GENERAL INFORMATION:

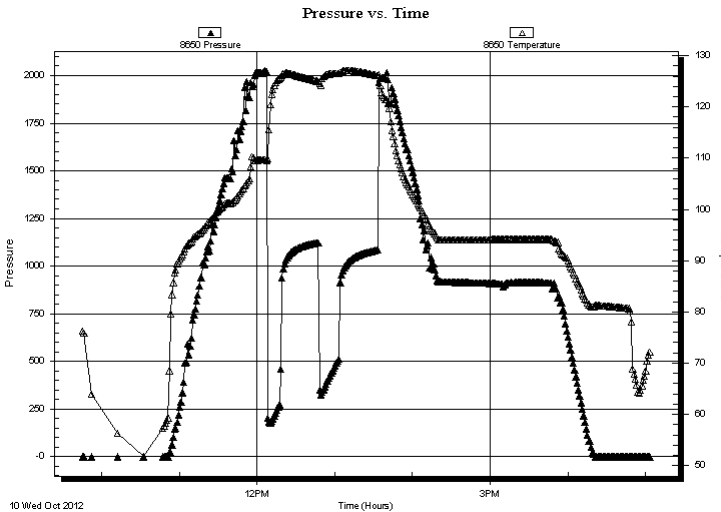
Formation: **Lansing**
 Deviated: No Whipstock: ft (KB)
 Time Tool Opened: 12:08:00
 Time Test Ended: 17:03:30
 Interval: **4181.00 ft (KB) To 4209.00 ft (KB) (TVD)**
 Total Depth: 4209.00 ft (KB) (TVD)
 Hole Diameter: 7.88 inches Hole Condition: Fair
 Test Type: Conventional Bottom Hole (Reset)
 Tester: Jace McKinney
 Unit No: 46
 Reference Elevations: 2660.00 ft (KB)
 2650.00 ft (CF)
 KB to GR/CF: 10.00 ft

Serial #: 8650 Outside

Press @ Run Depth: psig @ 4182.00 ft (KB) Capacity: 8000.00 psig
 Start Date: 2012.10.10 End Date: 2012.10.10 Last Calib.: 2012.10.10
 Start Time: 09:45:15 End Time: 17:03:15 Time On Btm:
 Time Off Btm:

TEST COMMENT: B.O.B. in 30 seconds
 Bled off for 5 min. B.O.B. in 8 1/2 min.
 B.O.B. In 30 seconds
 Bled off for 5 min. B.O.B. in 8 1/2 min.

PRESSURE SUMMARY



Time (Min.)	Pressure (psig)	Temp (deg F)	Annotation

Recovery

Length (ft)	Description	Volume (bbl)
0.00	2294 Feet Gas In Pipe	0.00
1736.00	Clean Oil 15 barrels of oil vac out	24.35
124.00	w cgmo 5%w 10%g 15%m 70%o	1.74

Gas Rates

	Choke (inches)	Pressure (psig)	Gas Rate (Mcf/d)

* Recovery from multiple tests



**TRILOBITE
TESTING, INC.**

DRILL STEM TEST REPORT

TOOL DIAGRAM

Palomino Petroleum, Inc.
4924 SE 84th ST
New ton KS 67114-8827
ATTN: Ryan Seib

McKinnie-Schwartzkopf #1
29-16s-26w Ness, KS
Job Ticket: 48903 **DST#: 2**
Test Start: 2012.10.10 @ 09:45:00

Tool Information

Drill Pipe:	Length: 4172.84 ft	Diameter: 3.80 inches	Volume: 58.53 bbl	Tool Weight: 2500.00 lb
Heavy Wt. Pipe:	Length: 0.00 ft	Diameter: 0.00 inches	Volume: 0.00 bbl	Weight set on Packer: 25000.00 lb
Drill Collar:	Length: 0.00 ft	Diameter: 0.00 inches	Volume: 0.00 bbl	Weight to Pull Loose: 84000.00 lb
			<u>Total Volume: 58.53 bbl</u>	Tool Chased 0.00 ft
Drill Pipe Above KB:	19.34 ft			String Weight: Initial 72000.00 lb
Depth to Top Packer:	4181.00 ft			Final 74000.00 lb
Depth to Bottom Packer:	ft			
Interval between Packers:	28.00 ft			
Tool Length:	55.50 ft			
Number of Packers:	2	Diameter: 6.75 inches		

Tool Comments:

Tool Description	Length (ft)	Serial No.	Position	Depth (ft)	Accum. Lengths
------------------	-------------	------------	----------	------------	----------------

Change Over Sub	1.00			4154.50	
Shut In Tool	5.00			4159.50	
Hydraulic tool	5.00			4164.50	
Jars	5.00			4169.50	
Safety Joint	2.50			4172.00	
Packer	5.00			4177.00	27.50 Bottom Of Top Packer
Packer	4.00			4181.00	
Stubb	1.00			4182.00	
Recorder	0.00	8675	Inside	4182.00	
Recorder	0.00	8650	Outside	4182.00	
Perforations	24.00			4206.00	
Change Over Sub	0.00			4206.00	
Drill Pipe	0.00			4206.00	
Change Over Sub	0.00			4206.00	
Bullnose	3.00			4209.00	28.00 Bottom Packers & Anchor

Total Tool Length: 55.50



**TRILOBITE
TESTING, INC.**

DRILL STEM TEST REPORT

FLUID SUMMARY

Palomino Petroleum, Inc.
4924 SE 84th ST
New ton KS 67114-8827
ATTN: Ryan Seib

McKinnie-Schwartzkopf #1
29-16s-26w Ness, KS
Job Ticket: 48903 **DST#: 2**
Test Start: 2012.10.10 @ 09:45:00

Mud and Cushion Information

Mud Type: Gel Chem	Cushion Type:	Oil API: 39 deg API
Mud Weight: 9.00 lb/gal	Cushion Length: ft	Water Salinity: ppm
Viscosity: 44.00 sec/qt	Cushion Volume: bbl	
Water Loss: 7.97 in ³	Gas Cushion Type:	
Resistivity: ohm.m	Gas Cushion Pressure: psig	
Salinity: 2200.00 ppm		
Filter Cake: 1.00 inches		

Recovery Information

Recovery Table

Length ft	Description	Volume bbl
0.00	2294 Feet Gas In Pipe	0.000
1736.00	Clean Oil 15 barrels of oil vac out	24.352
124.00	w cgm 5%w 10%g 15%m 70%o	1.739

Total Length: 1860.00 ft Total Volume: 26.091 bbl

Num Fluid Samples: 0 Num Gas Bombs: 0 Serial #:

Laboratory Name: Laboratory Location:

Recovery Comments: API: 39 @ 60 F = 39

Serial #: 8675

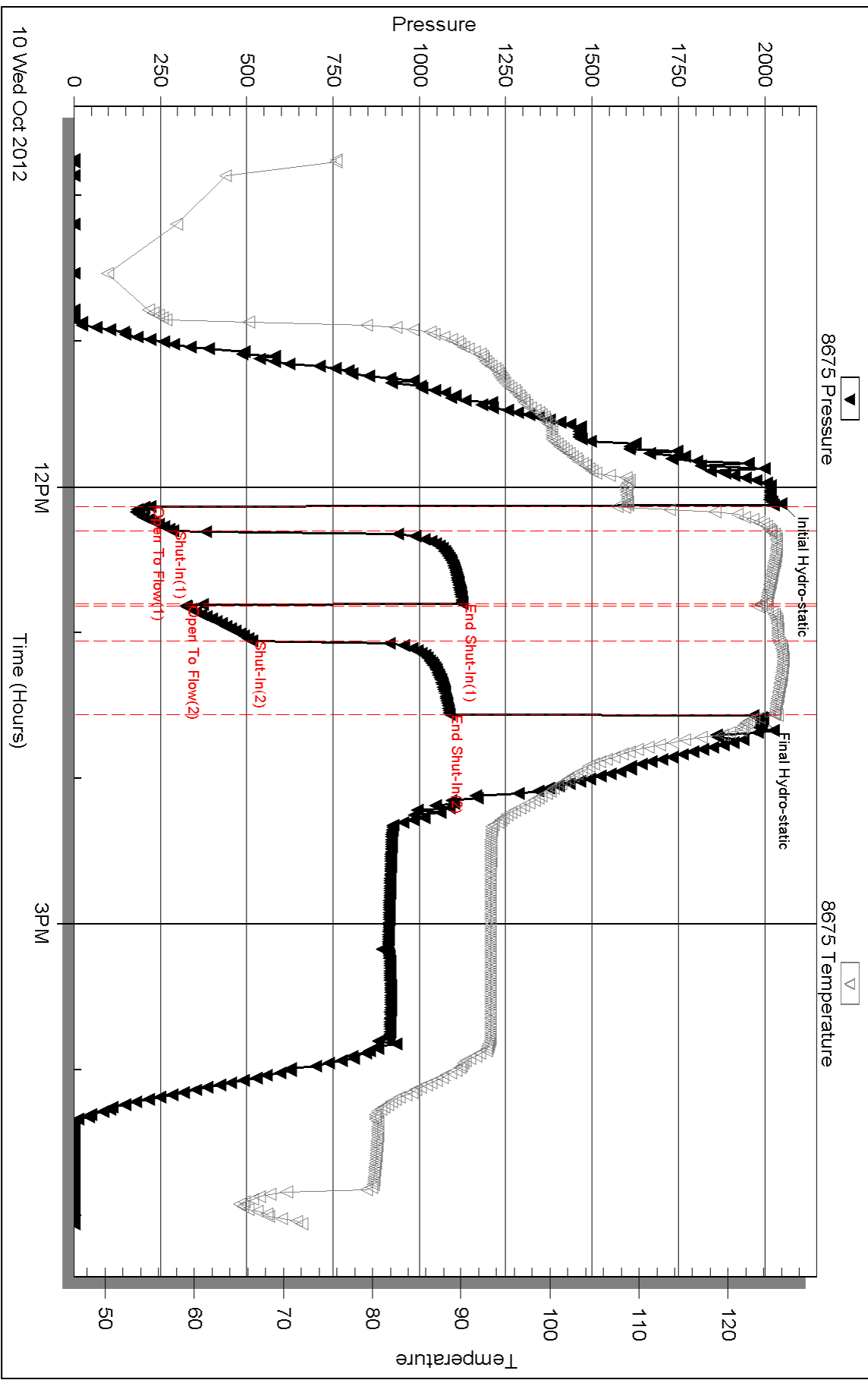
Inside

Palomino Petroleum, Inc.

29-16s-26w Ness, KS

DST Test Number: 2

Pressure vs. Time



Triobite Testing, Inc

Ref. No: 48903

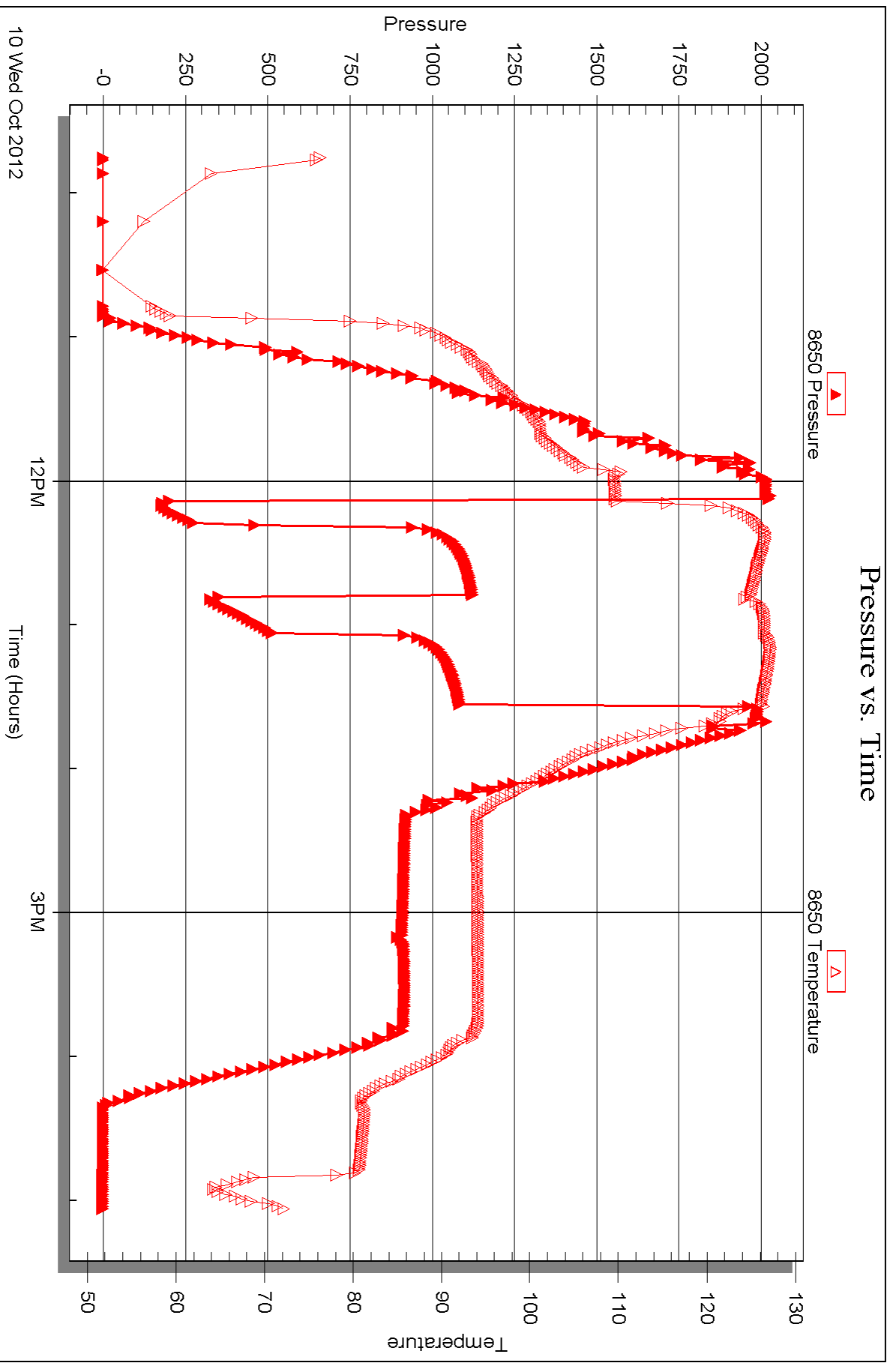
Printed: 2012.10.17 @ 11:51:35

Serial #: 8650

Outside Palomino Petroleum, Inc.

29-16s-26w Ness, KS

DST Test Number: 2



Triobite Testing, Inc

Ref. No: 48903

Printed: 2012.10.17 @ 11:51:36



DRILL STEM TEST REPORT

Prepared For: **Palomino Petroleum, Inc.**

4924 SE 84th ST
Newton KS 67114-8827

ATTN: Ryan Seib

29-16s-26w Ness, KS

McKinnie-Schwartzkopf #1

Start Date: 2012.10.11 @ 13:35:00

End Date: 2012.10.11 @ 19:30:15

Job Ticket #: 48904 DST #: 3

Trilobite Testing, Inc

PO Box 362 Hays, KS 67601

ph: 785-625-4778 fax: 785-625-5620

Printed: 2012.10.17 @ 11:50:39

Palomino Petroleum, Inc.

McKinnie-Schwartzkopf #1

29-16s-26w Ness, KS

DST # 3

Marmaton

2012.10.11



TRILOBITE TESTING, INC.

DRILL STEM TEST REPORT

Palomino Petroleum, Inc.
 4924 SE 84th ST
 Newton KS 67114-8827
 ATTN: Ryan Seib

McKinnie-Schwartzkopf #1
29-16s-26w Ness, KS
 Job Ticket: 48904 **DST#: 3**
 Test Start: 2012.10.11 @ 13:35:00

GENERAL INFORMATION:

Formation: **Marmaton**
 Deviated: No Whipstock: ft (KB)
 Time Tool Opened: 15:34:45
 Time Test Ended: 19:30:15
 Interval: **4268.00 ft (KB) To 4410.00 ft (KB) (TVD)**
 Total Depth: 4410.00 ft (KB) (TVD)
 Hole Diameter: 7.88 inches Hole Condition: Fair
 Test Type: Conventional Bottom Hole (Reset)
 Tester: Jace McKinney
 Unit No: 46
 Reference Elevations: 2660.00 ft (KB)
 2650.00 ft (CF)
 KB to GR/CF: 10.00 ft

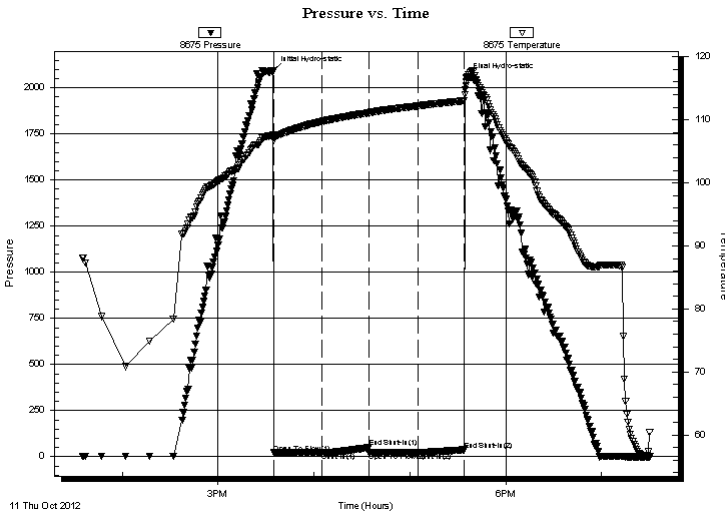
Serial #: 8675

Inside

Press @ Run Depth: 22.49 psig @ 4269.00 ft (KB) Capacity: 8000.00 psig
 Start Date: 2012.10.11 End Date: 2012.10.11 Last Calib.: 2012.10.11
 Start Time: 13:35:15 End Time: 19:30:15 Time On Btm: 2012.10.11 @ 15:34:30
 Time Off Btm: 2012.10.11 @ 17:35:00

TEST COMMENT: Built to 1/2" blow
 No return blow
 Weak surface blow
 No return blow

PRESSURE SUMMARY



Time (Min.)	Pressure (psig)	Temp (deg F)	Annotation
0	2094.32	107.55	Initial Hydro-static
1	21.41	106.79	Open To Flow (1)
31	22.34	109.74	Shut-In(1)
60	49.64	111.11	End Shut-In(1)
60	23.48	111.10	Open To Flow (2)
91	22.49	112.21	Shut-In(2)
120	37.43	113.03	End Shut-In(2)
121	2053.90	115.46	Final Hydro-static

Recovery

Length (ft)	Description	Volume (bbl)
15.00	100% Mud	0.21

* Recovery from multiple tests

Gas Rates

Choke (inches)	Pressure (psig)	Gas Rate (Mcf/d)



**TRILOBITE
TESTING, INC.**

DRILL STEM TEST REPORT

TOOL DIAGRAM

Palomino Petroleum, Inc.
4924 SE 84th ST
New ton KS 67114-8827
ATTN: Ryan Seib

McKinnie-Schwartzkopf #1
29-16s-26w Ness, KS
Job Ticket: 48904 **DST#: 3**
Test Start: 2012.10.11 @ 13:35:00

Tool Information

Drill Pipe:	Length: 4266.46 ft	Diameter: 3.80 inches	Volume: 59.85 bbl	Tool Weight: 2500.00 lb
Heavy Wt. Pipe:	Length: 0.00 ft	Diameter: 0.00 inches	Volume: 0.00 bbl	Weight set on Packer: 25000.00 lb
Drill Collar:	Length: 0.00 ft	Diameter: 0.00 inches	Volume: 0.00 bbl	Weight to Pull Loose: 86000.00 lb
		Total Volume: 59.85 bbl		Tool Chased 0.00 ft
Drill Pipe Above KB:	25.96 ft			String Weight: Initial 76000.00 lb
Depth to Top Packer:	4268.00 ft			Final 76000.00 lb
Depth to Bottom Packer:	ft			
Interval between Packers:	142.00 ft			
Tool Length:	169.50 ft			
Number of Packers:	2	Diameter: 6.75 inches		

Tool Comments:

Tool Description	Length (ft)	Serial No.	Position	Depth (ft)	Accum. Lengths
-------------------------	--------------------	-------------------	-----------------	-------------------	-----------------------

Change Over Sub	1.00			4241.50	
Shut In Tool	5.00			4246.50	
Hydraulic tool	5.00			4251.50	
Jars	5.00			4256.50	
Safety Joint	2.50			4259.00	
Packer	5.00			4264.00	27.50 Bottom Of Top Packer
Packer	4.00			4268.00	
Stubb	1.00			4269.00	
Recorder	0.00	8675	Inside	4269.00	
Recorder	0.00	8650	Outside	4269.00	
Perforations	12.00			4281.00	
Change Over Sub	1.00			4282.00	
Drill Pipe	124.00			4406.00	
Change Over Sub	1.00			4407.00	
Bullnose	3.00			4410.00	142.00 Bottom Packers & Anchor

Total Tool Length: 169.50



**TRILOBITE
TESTING, INC.**

DRILL STEM TEST REPORT

FLUID SUMMARY

Palomino Petroleum, Inc.
4924 SE 84th ST
New ton KS 67114-8827
ATTN: Ryan Seib

McKinnie-Schwartzkopf #1
29-16s-26w Ness, KS
Job Ticket: 48904 **DST#: 3**
Test Start: 2012.10.11 @ 13:35:00

Mud and Cushion Information

Mud Type: Gel Chem	Cushion Type:	Oil API:	deg API
Mud Weight: 9.00 lb/gal	Cushion Length: ft	Water Salinity:	ppm
Viscosity: 45.00 sec/qt	Cushion Volume: bbl		
Water Loss: 7.18 in ³	Gas Cushion Type:		
Resistivity: ohm.m	Gas Cushion Pressure: psig		
Salinity: 2100.00 ppm			
Filter Cake: 1.00 inches			

Recovery Information

Recovery Table

Length ft	Description	Volume bbl
15.00	100% Mud	0.210

Total Length: 15.00 ft Total Volume: 0.210 bbl
 Num Fluid Samples: 0 Num Gas Bombs: 0 Serial #:
 Laboratory Name: Laboratory Location:
 Recovery Comments:

Serial #: 8675

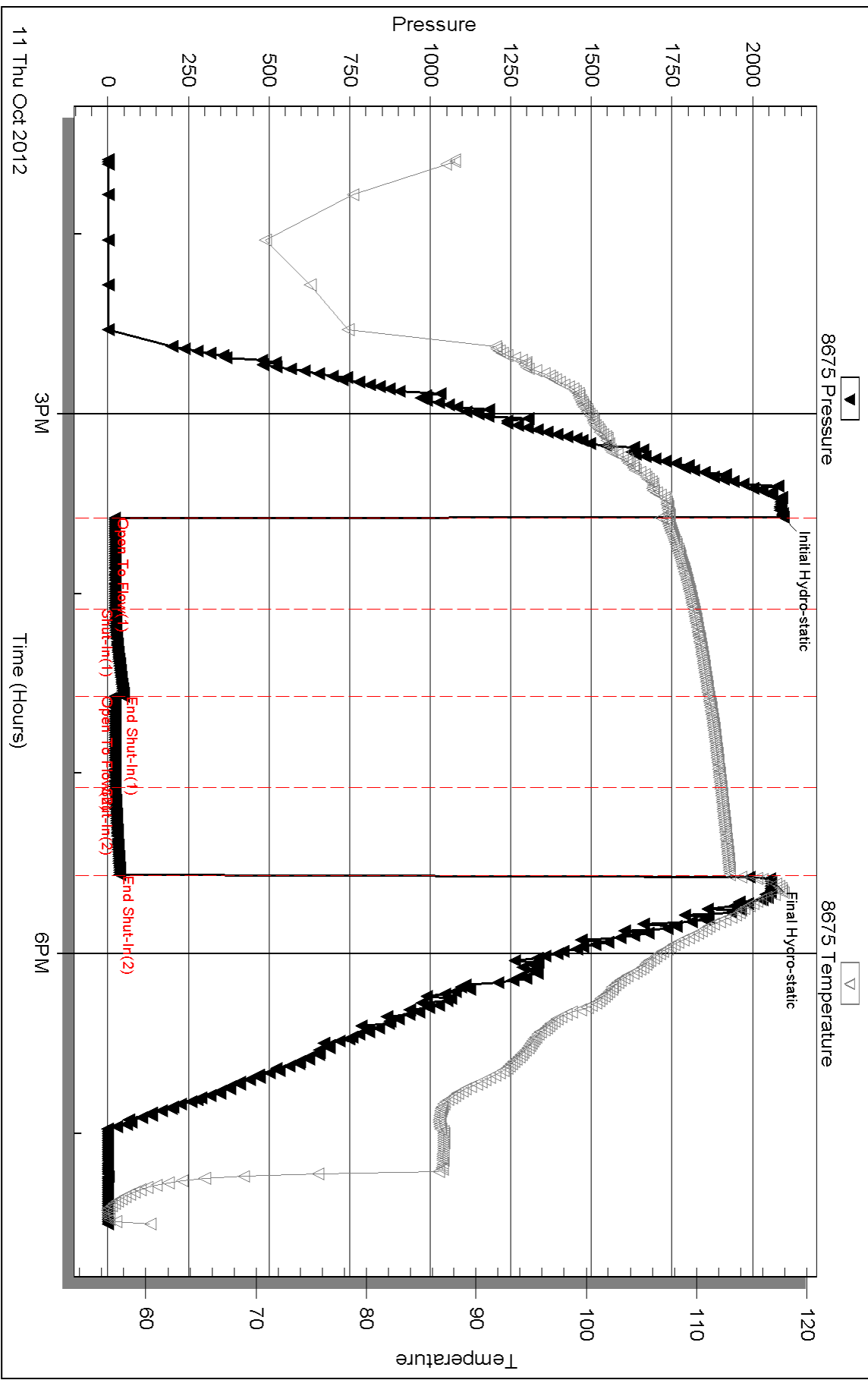
Inside

Palomino Petroleum, Inc.

29-16s-26w Ness, KS

DST Test Number: 3

Pressure vs. Time



Triobite Testing, Inc

Ref. No: 48904

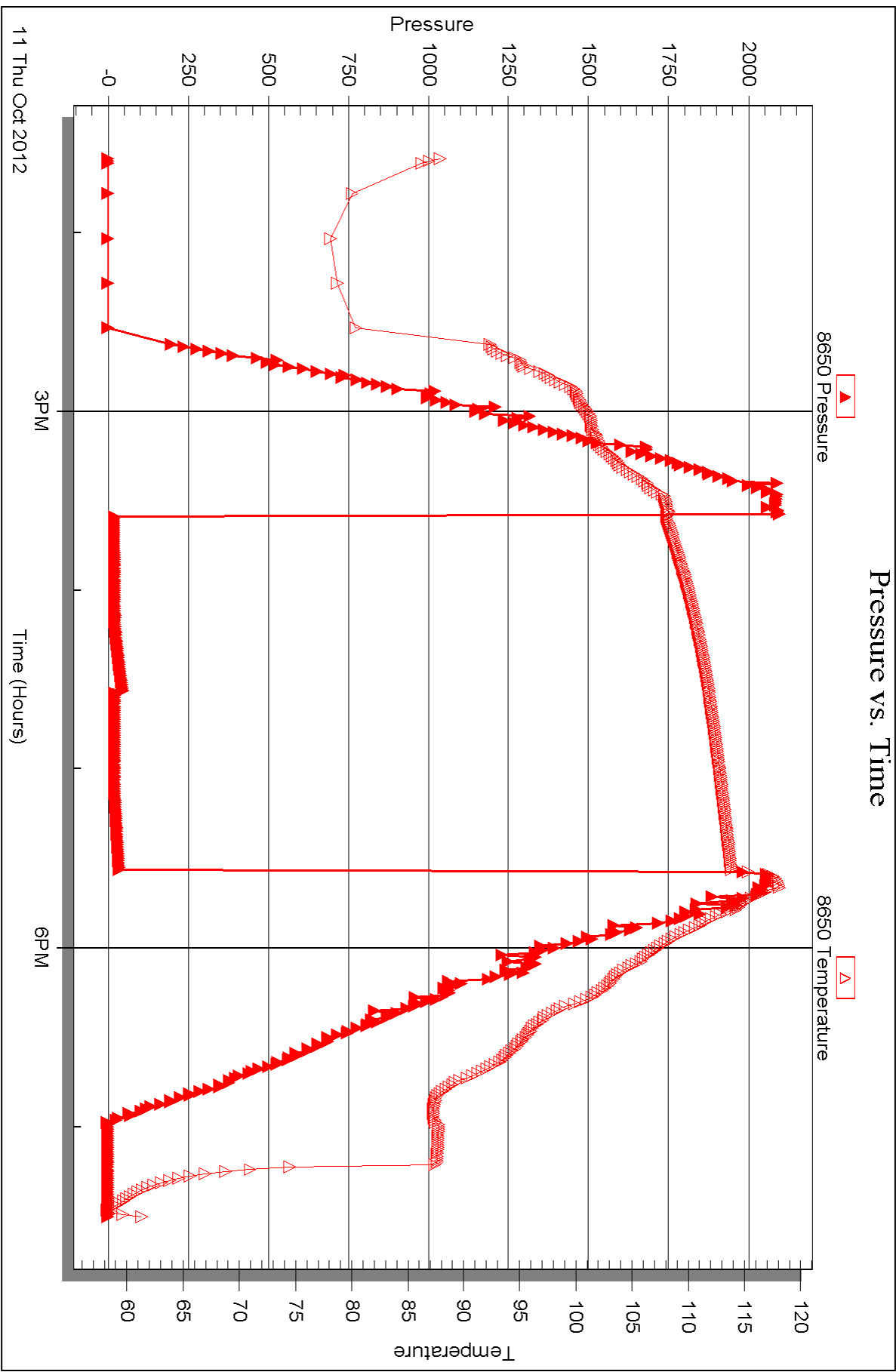
Printed: 2012.10.17 @ 11:50:44

Serial #: 8650

Outside Palomino Petroleum, Inc.

29-16s-26w Ness, KS

DST Test Number: 3





DRILL STEM TEST REPORT

Prepared For: **Palomino Petroleum, Inc.**

4924 SE 84th ST
Newton KS 67114-8827

ATTN: Ryan Seib

29-16s-26w Ness, KS

McKinnie-Schwartzkopf #1

Start Date: 2012.10.12 @ 06:50:00

End Date: 2012.10.12 @ 13:11:45

Job Ticket #: 48905 DST #: 4

Trilobite Testing, Inc

PO Box 362 Hays, KS 67601

ph: 785-625-4778 fax: 785-625-5620

Printed: 2012.10.17 @ 11:40:09



TRILOBITE TESTING, INC.

DRILL STEM TEST REPORT

Palomino Petroleum, Inc.
 4924 SE 84th ST
 New ton KS 67114-8827
 ATTN: Ryan Seib

McKinnie-Schwartzkopf #1
29-16s-26w Ness, KS
 Job Ticket: 48905 **DST#: 4**
 Test Start: 2012.10.12 @ 06:50:00

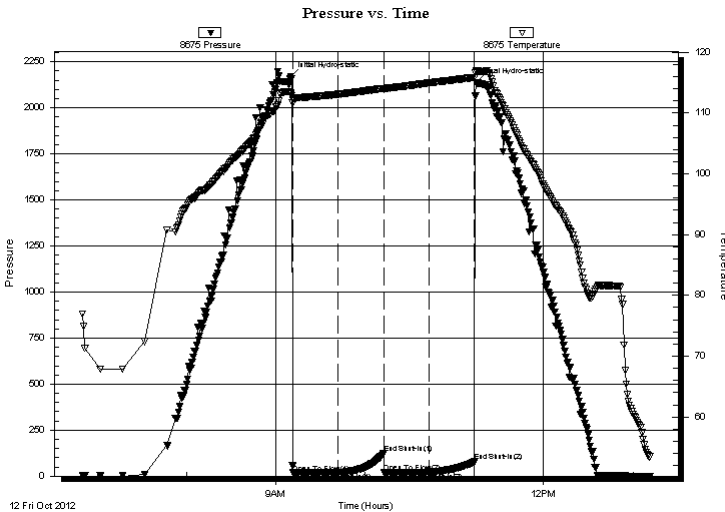
GENERAL INFORMATION:

Formation: **Fort Scott**
 Deviated: No Whipstock: ft (KB)
 Time Tool Opened: 09:11:30
 Time Test Ended: 13:11:45
 Interval: **4440.00 ft (KB) To 4495.00 ft (KB) (TVD)**
 Total Depth: 4495.00 ft (KB) (TVD)
 Hole Diameter: 7.88 inches Hole Condition: Fair
 Test Type: Conventional Bottom Hole (Reset)
 Tester: Jace McKinney
 Unit No: 46
 Reference Elevations: 2660.00 ft (KB)
 2650.00 ft (CF)
 KB to GR/CF: 10.00 ft

Serial #: 8675 Inside
 Press @ Run Depth: 19.99 psig @ 4441.00 ft (KB) Capacity: 8000.00 psig
 Start Date: 2012.10.12 End Date: 2012.10.12 Last Calib.: 2012.10.12
 Start Time: 06:50:15 End Time: 13:11:45 Time On Btm: 2012.10.12 @ 09:10:00
 Time Off Btm: 2012.10.12 @ 11:14:45

TEST COMMENT: Weak surface blow
 No return blow
 Weak surface blow
 No return blow

PRESSURE SUMMARY



Time (Min.)	Pressure (psig)	Temp (deg F)	Annotation
0	2169.18	113.12	Initial Hydro-static
2	18.31	112.24	Open to Flow (1)
32	19.74	113.09	Shut-In(1)
63	122.94	114.07	End Shut-In(1)
63	19.67	114.00	Open To Flow (2)
93	19.99	114.94	Shut-In(2)
124	78.40	115.86	End Shut-In(2)
125	2135.83	117.02	Final Hydro-static

Recovery

Length (ft)	Description	Volume (bbl)
5.00	100% Mud	0.07

* Recovery from multiple tests

Gas Rates

Choke (inches)	Pressure (psig)	Gas Rate (Mcf/d)



**TRILOBITE
TESTING, INC.**

DRILL STEM TEST REPORT

TOOL DIAGRAM

Palomino Petroleum, Inc.

McKinnie-Schwartzkopf #1

4924 SE 84th ST
New ton KS 67114-8827

29-16s-26w Ness, KS

Job Ticket: 48905

DST#: 4

ATTN: Ryan Seib

Test Start: 2012.10.12 @ 06:50:00

Tool Information

Drill Pipe:	Length: 4421.91 ft	Diameter: 3.80 inches	Volume: 62.03 bbl	Tool Weight: 2500.00 lb
Heavy Wt. Pipe:	Length: 0.00 ft	Diameter: 0.00 inches	Volume: 0.00 bbl	Weight set on Packer: 25000.00 lb
Drill Collar:	Length: 0.00 ft	Diameter: 0.00 inches	Volume: 0.00 bbl	Weight to Pull Loose: 86000.00 lb
			<u>Total Volume: 62.03 bbl</u>	Tool Chased 0.00 ft
Drill Pipe Above KB:	9.41 ft			String Weight: Initial 76000.00 lb
Depth to Top Packer:	4440.00 ft			Final 76000.00 lb
Depth to Bottom Packer:	ft			
Interval between Packers:	55.00 ft			
Tool Length:	82.50 ft			
Number of Packers:	2	Diameter: 6.75 inches		

Tool Comments:

Tool Description

Tool Description	Length (ft)	Serial No.	Position	Depth (ft)	Accum. Lengths
Change Over Sub	1.00			4413.50	
Shut In Tool	5.00			4418.50	
Hydraulic tool	5.00			4423.50	
Jars	5.00			4428.50	
Safety Joint	2.50			4431.00	
Packer	5.00			4436.00	27.50 Bottom Of Top Packer
Packer	4.00			4440.00	
Stubb	1.00			4441.00	
Recorder	0.00	8675	Inside	4441.00	
Recorder	0.00	8650	Outside	4441.00	
Perforations	18.00			4459.00	
Change Over Sub	1.00			4460.00	
Drill Pipe	31.00			4491.00	
Change Over Sub	1.00			4492.00	
Bullnose	3.00			4495.00	55.00 Bottom Packers & Anchor

Total Tool Length: 82.50



**TRILOBITE
TESTING, INC.**

DRILL STEM TEST REPORT

FLUID SUMMARY

Palomino Petroleum, Inc.
4924 SE 84th ST
New ton KS 67114-8827
ATTN: Ryan Seib

McKinnie-Schwartzkopf #1
29-16s-26w Ness, KS
Job Ticket: 48905 **DST#: 4**
Test Start: 2012.10.12 @ 06:50:00

Mud and Cushion Information

Mud Type: Gel Chem	Cushion Type:	Oil API:	deg API
Mud Weight: 9.00 lb/gal	Cushion Length: ft	Water Salinity:	ppm
Viscosity: 45.00 sec/qt	Cushion Volume: bbl		
Water Loss: 7.18 in ³	Gas Cushion Type:		
Resistivity: ohm.m	Gas Cushion Pressure: psig		
Salinity: 2100.00 ppm			
Filter Cake: 1.00 inches			

Recovery Information

Recovery Table

Length ft	Description	Volume bbl
5.00	100% Mud	0.070

Total Length: 5.00 ft Total Volume: 0.070 bbl
 Num Fluid Samples: 0 Num Gas Bombs: 0 Serial #:
 Laboratory Name: Laboratory Location:
 Recovery Comments:

Serial #: 8675

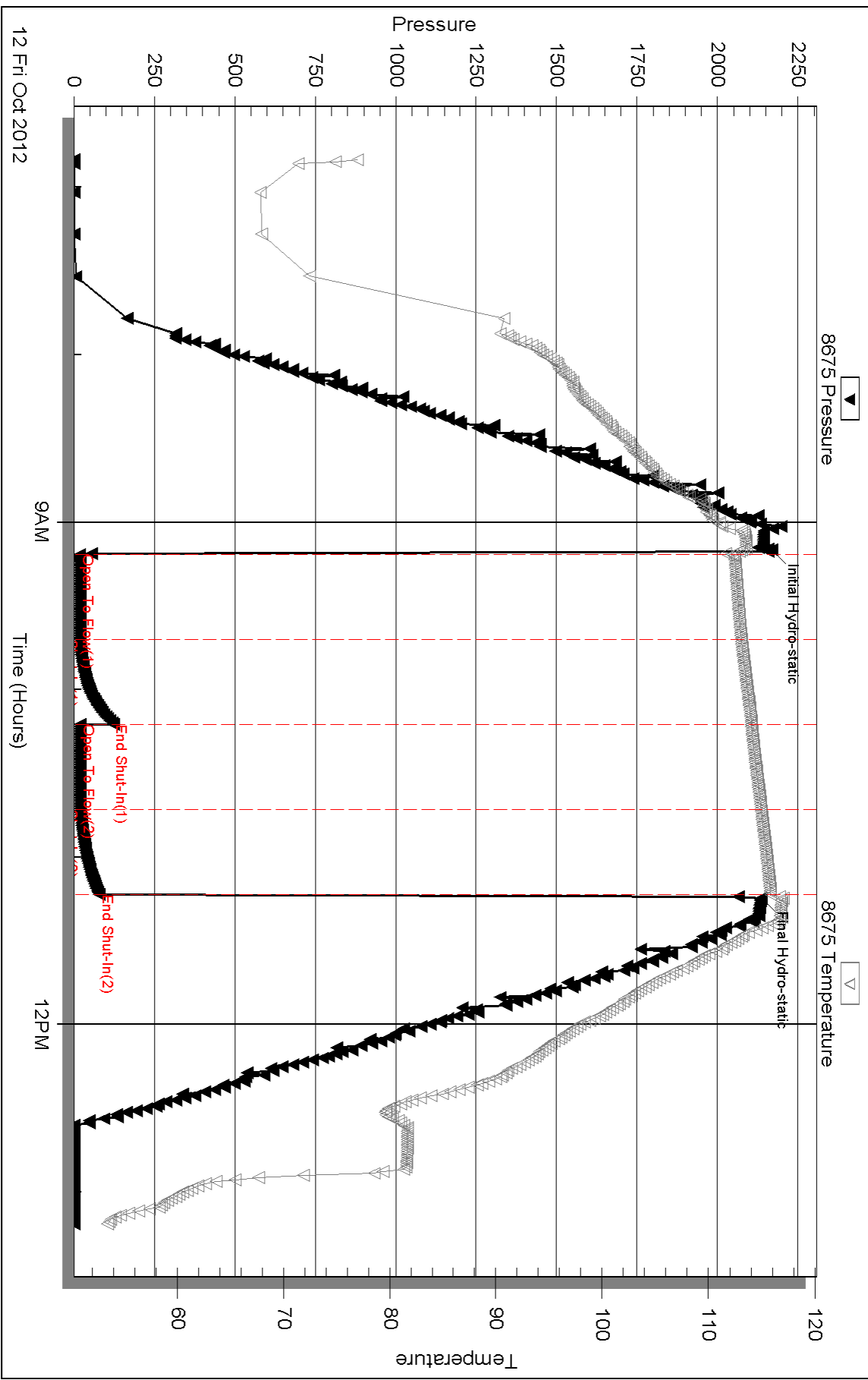
Inside

Palomino Petroleum, Inc.

29-16s-26w Ness, KS

DST Test Number: 4

Pressure vs. Time



Triobite Testing, Inc

Ref. No: 48905

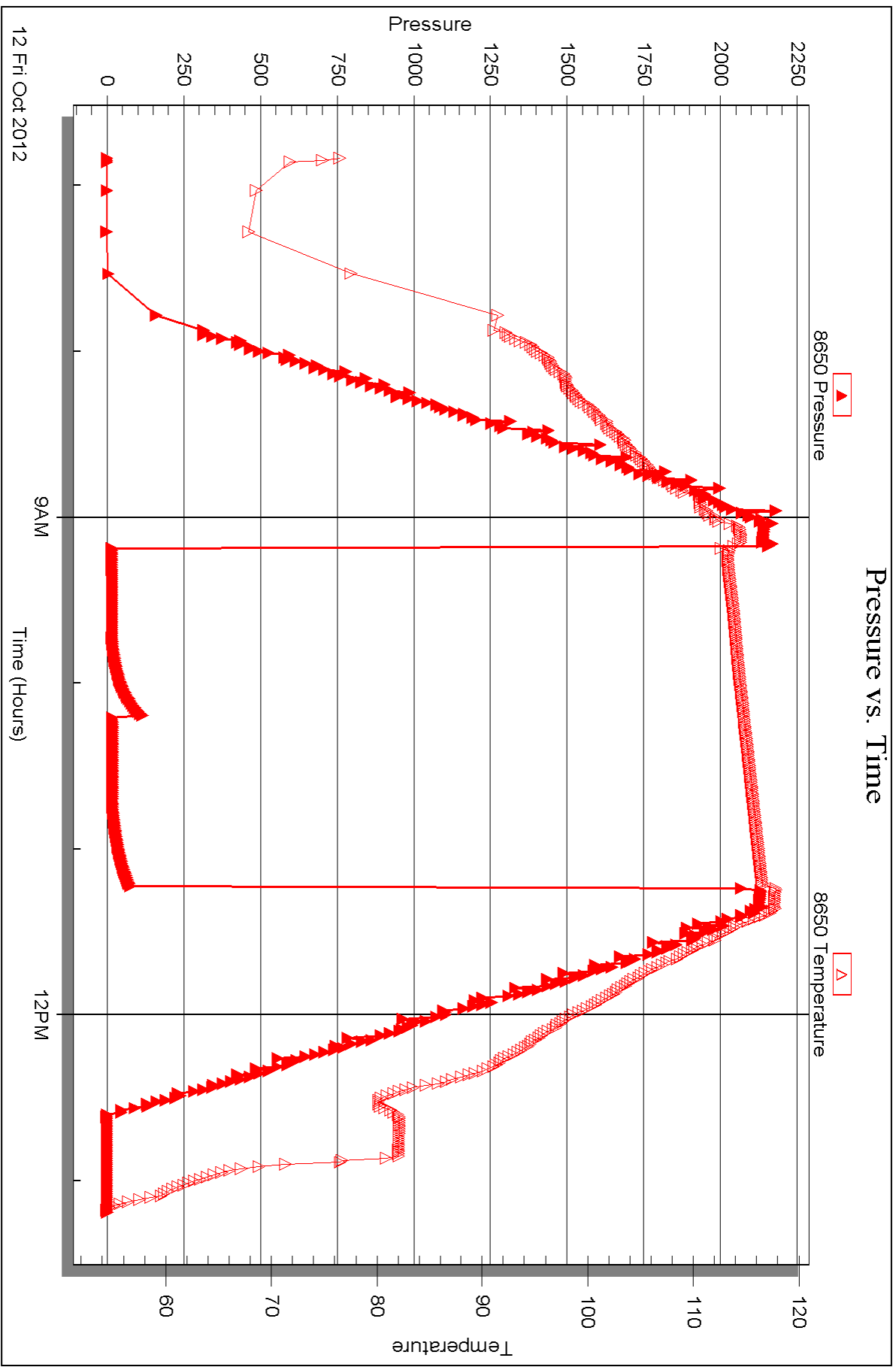
Printed: 2012.10.17 @ 11:40:13

Serial #: 8650

Outside Palomino Petroleum, Inc.

29-16s-26w Ness, KS

DST Test Number: 4





DRILL STEM TEST REPORT

Prepared For: **Palomino Petroleum, Inc.**

4924 SE 84th ST
Newton KS 67114-8827

ATTN: Ryan Seib

29-16s-26w Ness, KS

McKinnie-Schwartzkopf #1

Start Date: 2012.10.13 @ 01:55:00

End Date: 2012.10.13 @ 09:31:45

Job Ticket #: 48906 DST #: 5

Trilobite Testing, Inc

PO Box 362 Hays, KS 67601

ph: 785-625-4778 fax: 785-625-5620

Printed: 2012.10.17 @ 11:39:16

Palomino Petroleum, Inc.

McKinnie-Schwartzkopf #1

29-16s-26w Ness, KS

DST # 5

Mississippian

2012.10.13



TRILOBITE TESTING, INC.

DRILL STEM TEST REPORT

Palomino Petroleum, Inc.
 4924 SE 84th ST
 Newton KS 67114-8827
 ATTN: Ryan Seib

McKinnie-Schwartzkopf #1
29-16s-26w Ness, KS
 Job Ticket: 48906 **DST#: 5**
 Test Start: 2012.10.13 @ 01:55:00

GENERAL INFORMATION:

Formation: **Mississippian**
 Deviated: No Whipstock: ft (KB)
 Time Tool Opened: 04:46:15
 Time Test Ended: 09:31:45
 Interval: **4530.00 ft (KB) To 4602.00 ft (KB) (TVD)**
 Total Depth: 4602.00 ft (KB) (TVD)
 Hole Diameter: 7.88 inches Hole Condition: Fair
 Test Type: Conventional Bottom Hole (Reset)
 Tester: Jace McKinney
 Unit No: 46
 Reference Elevations: 2660.00 ft (KB)
 2650.00 ft (CF)
 KB to GR/CF: 10.00 ft

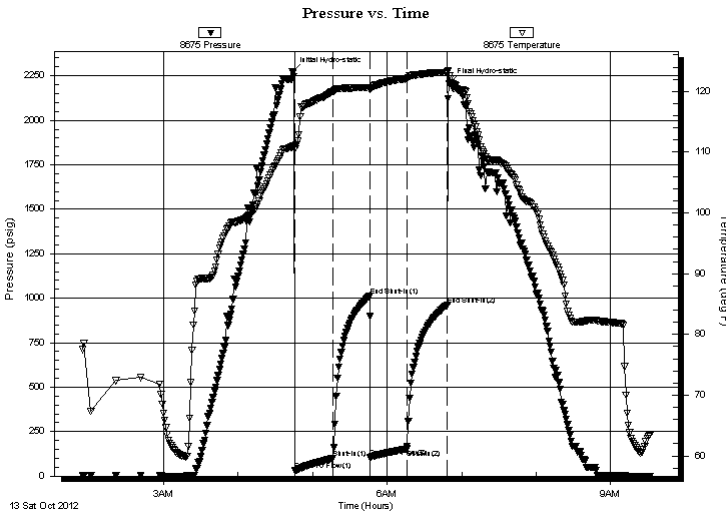
Serial #: 8675

Inside

Press @ Run Depth: 153.79 psig @ 4531.00 ft (KB) Capacity: 8000.00 psig
 Start Date: 2012.10.13 End Date: 2012.10.13 Last Calib.: 2012.10.13
 Start Time: 01:55:15 End Time: 09:31:45 Time On Btm: 2012.10.13 @ 04:44:00
 Time Off Btm: 2012.10.13 @ 06:50:45

TEST COMMENT: B.O.B in 24 min.
 Bled off for 5 min. Built to 1/4" return blow
 B.O.B. in 28 min.
 Bled off for 5 min. Built to 1/4" return blow

PRESSURE SUMMARY



Time (Min.)	Pressure (psig)	Temp (deg F)	Annotation
0	2275.21	110.90	Initial Hydro-static
3	30.10	110.55	Open To Flow (1)
33	98.36	120.00	Shut-In(1)
62	1011.33	120.65	End Shut-In(1)
63	106.59	120.33	Open To Flow (2)
92	153.79	122.16	Shut-In(2)
125	963.16	123.18	End Shut-In(2)
127	2212.40	122.02	Final Hydro-static

Recovery

Length (ft)	Description	Volume (bbl)
0.00	62 Feet Gas In Pipe	0.00
30.00	w com 10%W 40%O 50%M	0.42
124.00	ocw m 10%O 30%W 60%M	1.74
124.00	gcow m 5%G 5%O 40%W 50%M	1.74

* Recovery from multiple tests

Gas Rates

	Choke (inches)	Pressure (psig)	Gas Rate (Mcf/d)



**TRILOBITE
TESTING, INC.**

DRILL STEM TEST REPORT

TOOL DIAGRAM

Palomino Petroleum, Inc.

McKinnie-Schwartzkopf #1

4924 SE 84th ST
New ton KS 67114-8827

29-16s-26w Ness, KS

Job Ticket: 48906

DST#: 5

ATTN: Ryan Seib

Test Start: 2012.10.13 @ 01:55:00

Tool Information

Drill Pipe:	Length: 4515.31 ft	Diameter: 3.80 inches	Volume: 63.34 bbl	Tool Weight: 2500.00 lb
Heavy Wt. Pipe:	Length: 0.00 ft	Diameter: 0.00 inches	Volume: 0.00 bbl	Weight set on Packer: 30000.00 lb
Drill Collar:	Length: 0.00 ft	Diameter: 0.00 inches	Volume: 0.00 bbl	Weight to Pull Loose: 90000.00 lb
			<u>Total Volume: 63.34 bbl</u>	Tool Chased 0.00 ft
Drill Pipe Above KB:	12.81 ft			String Weight: Initial 78000.00 lb
Depth to Top Packer:	4530.00 ft			Final 80000.00 lb
Depth to Bottom Packer:	ft			
Interval between Packers:	72.00 ft			
Tool Length:	99.50 ft			
Number of Packers:	2	Diameter: 6.75 inches		
Tool Comments:				

Tool Description	Length (ft)	Serial No.	Position	Depth (ft)	Accum. Lengths
------------------	-------------	------------	----------	------------	----------------

Change Over Sub	1.00			4503.50	
Shut In Tool	5.00			4508.50	
Hydraulic tool	5.00			4513.50	
Jars	5.00			4518.50	
Safety Joint	2.50			4521.00	
Packer	5.00			4526.00	27.50 Bottom Of Top Packer
Packer	4.00			4530.00	
Stubb	1.00			4531.00	
Recorder	0.00	8675	Inside	4531.00	
Recorder	0.00	8650	Outside	4531.00	
Perforations	4.00			4535.00	
Change Over Sub	1.00			4536.00	
Drill Pipe	62.00			4598.00	
Change Over Sub	1.00			4599.00	
Bullnose	3.00			4602.00	72.00 Bottom Packers & Anchor

Total Tool Length: 99.50



**TRILOBITE
TESTING, INC.**

DRILL STEM TEST REPORT

FLUID SUMMARY

Palomino Petroleum, Inc.
4924 SE 84th ST
New ton KS 67114-8827
ATTN: Ryan Seib

McKinnie-Schwartzkopf #1
29-16s-26w Ness, KS
Job Ticket: 48906 **DST#: 5**
Test Start: 2012.10.13 @ 01:55:00

Mud and Cushion Information

Mud Type: Gel Chem	Cushion Type:	Oil API:	deg API
Mud Weight: 9.00 lb/gal	Cushion Length: ft	Water Salinity:	ppm
Viscosity: 49.00 sec/qt	Cushion Volume: bbl		
Water Loss: 7.19 in ³	Gas Cushion Type:		
Resistivity: ohm.m	Gas Cushion Pressure: psig		
Salinity: 3200.00 ppm			
Filter Cake: 1.00 inches			

Recovery Information

Recovery Table

Length ft	Description	Volume bbl
0.00	62 Feet Gas In Pipe	0.000
30.00	w com 10%W 40%O 50%M	0.421
124.00	ocw m 10%O 30%W 60%M	1.739
124.00	gcow m 5%G 5%O 40%W 50%M	1.739

Total Length: 278.00 ft Total Volume: 3.899 bbl
 Num Fluid Samples: 0 Num Gas Bombs: 0 Serial #:
 Laboratory Name: Laboratory Location:
 Recovery Comments: RW .15 @ 60 F = 60,000

Serial #: 8675

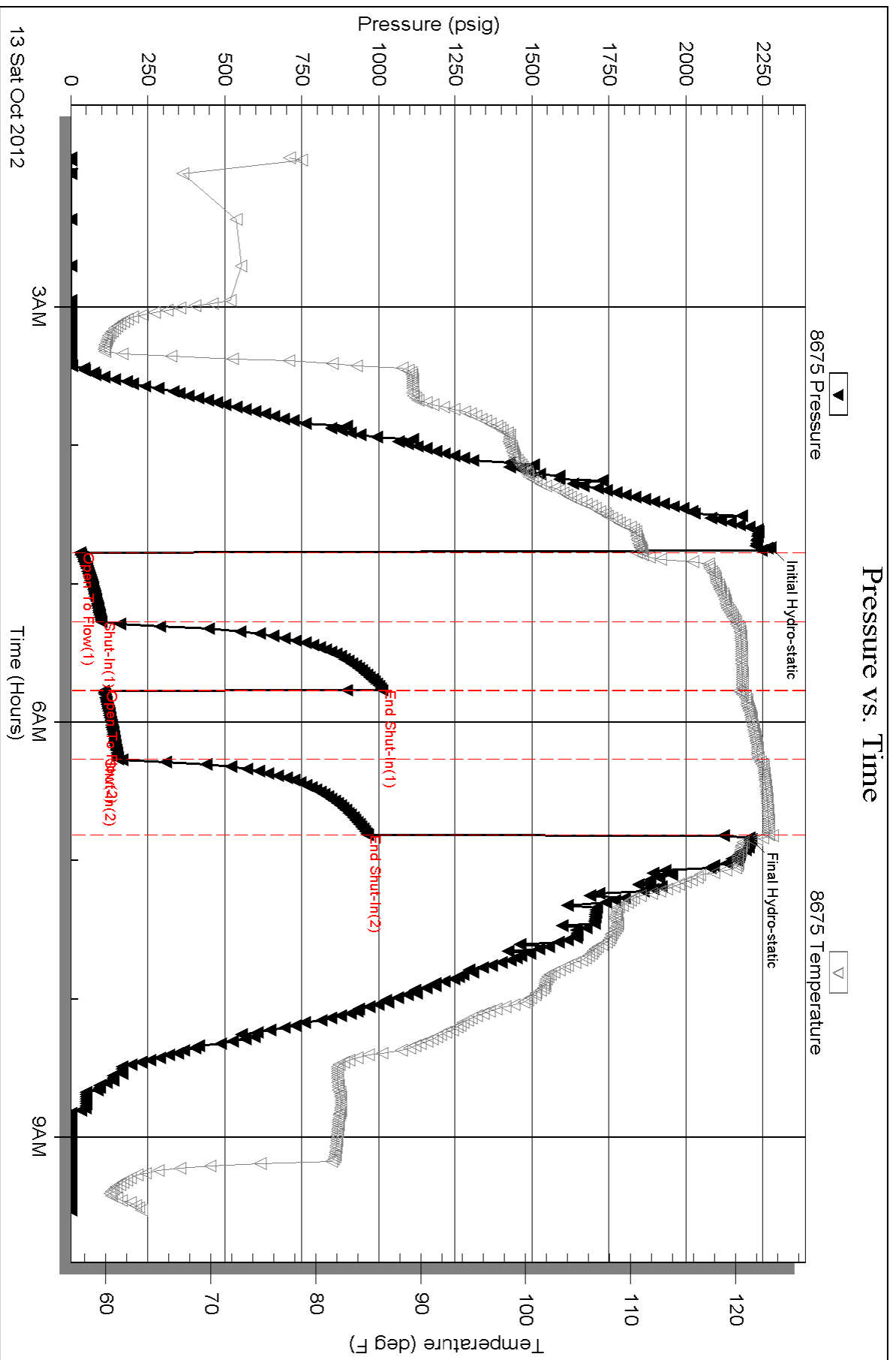
Inside

Palomino Petroleum, Inc.

29-16s-26w Ness, KS

DST Test Number: 5

Pressure vs. Time

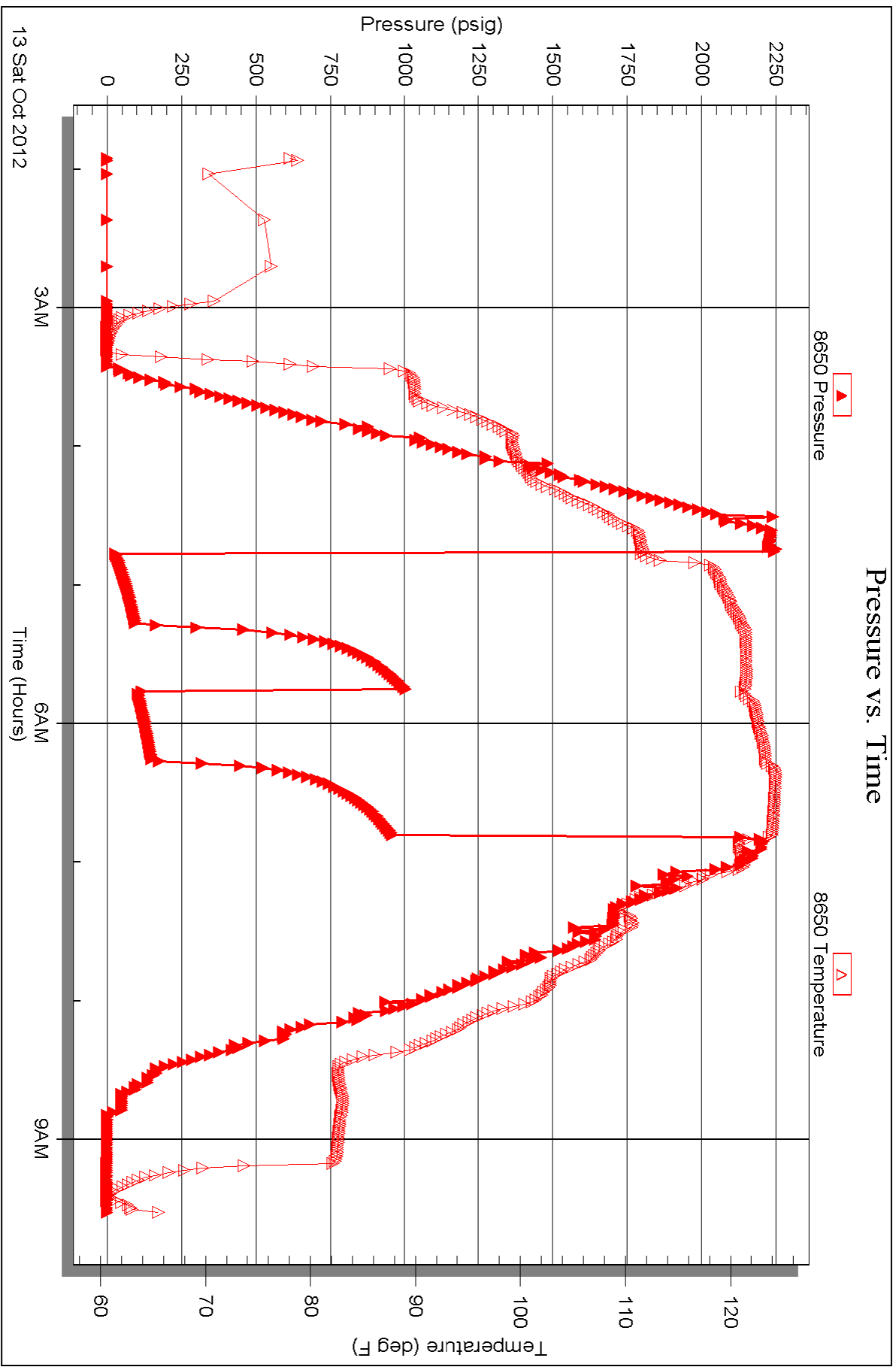


Serial #: 8650

Outside Palomino Petroleum, Inc.

29-16s-26w Ness, KS

DST Test Number: 5



Triobite Testing, Inc

Ref. No: 48906

Printed: 2012.10.17 @ 11:39:21



TRILOBITE TESTING INC.

P.O. Box 1733 • Hays, Kansas 67601

Test Ticket

NO. 48902

Well Name & No. McKinnie-Schwartzkopf #1 Test No. 1 Date 10/9/12 10/10/12
 Company Palomino Petroleum, Inc. Elevation 22660 KB 22650 GL
 Address 4924 SE 84th St Newton KS 67114-8827
 Co. Rep / Geo. Ryan Beile Rig Val Rig 2
 Location: Sec. 29 Twp. 16S Rge. 2E Co. Ness State KS

Interval Tested 4110 - 4184 Zone Tested Lansing
 Anchor Length 74 Drill Pipe Run 4110.54 Mud Wt. 9.5
 Top Packer Depth 4106 Drill Collars Run _____ Vis 43
 Bottom Packer Depth 4110 Wt. Pipe Run 1 WL 9.2
 Total Depth 4184 Chlorides 1,900 ppm System LCM Ø

Blow Description B.O.B. in 8 min.
Bled off for 5 min. Built to 4 1/2" return below
B.O.B. in 5 1/2 min.
Bled off for 5 min. Built to 8" return below

Rec	Feet of	%gas	%oil	%water	%mud
<u>Ø</u>	<u>700 Feet Gas In Pipe</u>				
<u>189</u>	<u>OCGMW</u>	<u>20%</u>	<u>5%</u>	<u>45%</u>	<u>30%</u>
<u>162</u>	<u>MCCOW</u>	<u>20%</u>	<u>30%</u>	<u>30%</u>	<u>20%</u>
<u>164</u>	<u>CCOM</u>	<u>10%</u>	<u>40%</u>	<u>50%</u>	

Rec Total 415 BHT 119 Gravity _____ API RW .3 @ 35° F Chlorides 40000 ppm

(A) Initial Hydrostatic <u>1,990</u>	<input checked="" type="checkbox"/> Test <u>1250</u>	T-On Location <u>18:20</u>
(B) First Initial Flow <u>28</u>	<input checked="" type="checkbox"/> Jars <u>250</u>	T-Started <u>18:55</u>
(C) First Final Flow <u>106</u>	<input checked="" type="checkbox"/> Safety Joint <u>75</u>	T-Open <u>21:12</u>
(D) Initial Shut-In <u>1,126</u>	<input checked="" type="checkbox"/> Circ Sub <u>w/c</u>	T-Pulled <u>23:12</u>
(E) Second Initial Flow <u>113</u>	<input type="checkbox"/> Hourly Standby _____	T-Out <u>1:51</u>
(F) Second Final Flow <u>169</u>	<input checked="" type="checkbox"/> Mileage <u>100 RT</u> <u>155</u>	Comments _____
(G) Final Shut-In <u>1,095</u>	<input type="checkbox"/> Sampler _____	
(H) Final Hydrostatic <u>1,948</u>	<input type="checkbox"/> Straddle _____	<input type="checkbox"/> Ruined Shale Packer _____
Initial Open <u>30</u>	<input type="checkbox"/> Shale Packer _____	<input type="checkbox"/> Ruined Packer _____
Initial Shut-In <u>30</u>	<input type="checkbox"/> Extra Packer _____	<input type="checkbox"/> Extra Copies _____
Final Flow <u>30</u>	<input type="checkbox"/> Extra Recorder _____	Sub Total <u>0</u>
Final Shut-In <u>30</u>	<input type="checkbox"/> Day Standby _____	Total <u>1730</u>
	<input checked="" type="checkbox"/> Accessibility _____	MP/DST Disc't _____
	Sub Total <u>1730</u>	

Approved By [Signature]

Our Representative [Signature]

TriLOBITE TESTING INC. shall not be liable for damaged of any kind of the property or personnel of the one for whom a test is made, or for any loss suffered or sustained, directly or indirectly, through the use of its equipment, or its statements or opinion concerning the results of any test, tools lost or damaged in the hole shall be paid for at cost by the party for whom the test is made.



TRILOBITE TESTING INC.

P.O. Box 1733 • Hays, Kansas 67601

Test Ticket

NO. 48903

Well Name & No. McKinnie-Schwartzkopf # 1 Test No. 2 Date 10/10/12
 Company Palomino Petroleum, Inc. Elevation 2660 KB 2650 GL
 Address 4924 SE 84th St Newton, KS 67114-8827
 Co. Rep / Geo. Ryan Seile Rig Val Rig 2
 Location: Sec. 29 Twp. 11es Rge. 26w Co. Ness State KS

Interval Tested 4181-4209 Zone Tested Lansing Zone
 Anchor Length 28 Drill Pipe Run 4172.84 Mud Wt. 9.25
 Top Packer Depth 4177 Drill Collars Run _____ Vis 44
 Bottom Packer Depth 4181 Wt. Pipe Run _____ WL 8.0
 Total Depth 4209 Chlorides 2,200 ppm System LCM Ø

Blow Description B.O.B. in 30 seconds
Bled off 5 min. B.O.B. in 8 1/2 min.
B.O.B. in 30 seconds
Bled off 5 min. B.O.B. in 8 1/2 min.

Rec	Feet of	%gas	%oil	%water	%mud
<u>0</u>	<u>2294 Feet gas in pipe</u>				
<u>1736</u>	<u>Feet of clean oil 15 barrels & oil vac out</u>				
<u>124</u>	<u>Feet of WCCMO WCCMO</u>	<u>10%</u>	<u>70%</u>	<u>5%</u>	<u>15%</u>
____	Feet of _____	%gas	%oil	%water	%mud
____	Feet of _____	%gas	%oil	%water	%mud

Rec Total 1860 BHT 126 Gravity 39 API RW _____ @ _____ ° F Chlorides _____ ppm

(A) Initial Hydrostatic 2,048 Test 1250 T-On Location 8:15
 (B) First Initial Flow 221 Jars 250 T-Started 9:45
 (C) First Final Flow 285 + 125 Safety Joint 75 T-Open 12:07
 (D) Initial Shut-In 1,125 323 Circ Sub used 50 T-Pulled 13:32
 (E) Second Initial Flow 323 515 Hourly Standby _____ T-Out 17:04
 (F) Second Final Flow 515 1087 Mileage 100 RT 155 Comments _____
 (G) Final Shut-In 1,087 Sampler _____
 (H) Final Hydrostatic 1,994 Straddle _____
 Shale Packer 250 Ruined Shale Packer _____
 Extra Packer _____ Ruined Packer _____
 Extra Recorder _____ Extra Copies _____
 Day Standby _____ Sub Total 0
 Accessibility _____ Total 2030
 Sub Total 2030 MP/DST Disc't _____

Approved By _____ Our Representative [Signature]
 Trilobite Testing Inc. shall not be liable for damaged of any kind of the property or personnel of the one for whom a test is made, or for any loss suffered or sustained, directly or indirectly, through the use of its equipment, or its statements or opinion concerning the results of any test, tools lost or damaged in the hole shall be paid for at cost by the party for whom the test is made.



TRILOBITE TESTING INC.

P.O. Box 1733 • Hays, Kansas 67601

Test Ticket

NO. 48904

Well Name & No. McKinnie - Schwartzkopf # 1 Test No. 3 Date 10/11/12
 Company Palomino Petroleum, Inc Elevation 2660 KB 2650 GL
 Address 4924 SE 84th ST Newton, KS 67114 - 8827
 Co. Rep / Geo. Ryan Seile Rig Val Rig 2
 Location: Sec. 29 Twp. 16S Rge. 26W Co. NESS State KS

Interval Tested 4268 - 4410 Zone Tested Marmaton
 Anchor Length 142 Drill Pipe Run 4268.46 Mud Wt. 9.4
 Top Packer Depth 4264 Drill Collars Run _____ Vis 45
 Bottom Packer Depth 4268 Wt. Pipe Run _____ WL 7.2
 Total Depth 4410 Chlorides 2,100 ppm System LCM Ø

Blow Description Built to 1/2" below
No return below
Weak surface below
No return below

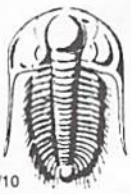
Rec	Feet of	%gas	%oil	%water	%mud
<u>15</u>	<u>Mud</u>			<u>100</u>	
Rec	Feet of	%gas	%oil	%water	%mud
Rec	Feet of	%gas	%oil	%water	%mud
Rec	Feet of	%gas	%oil	%water	%mud

Rec Total 15 BHT 112 Gravity _____ API RW _____ @ _____ ° F Chlorides _____ ppm
 (A) Initial Hydrostatic 2,094 Test 1250 T-On Location 11:30
 (B) First Initial Flow 21 Jars 250 T-Started 13:35
 (C) First Final Flow 22 Safety Joint 75 T-Open 15:35
 (D) Initial Shut-In 50 Circ Sub N/C T-Pulled 17:35
 (E) Second Initial Flow 23 Hourly Standby _____ T-Out 19:30
 (F) Second Final Flow 22 Mileage 100 RT 155 Comments _____
 (G) Final Shut-In 37 Sampler _____
 (H) Final Hydrostatic 2,054 Straddle _____
 Ruined Shale Packer _____
 Shale Packer 250 Ruined Packer _____
 Extra Packer _____ Extra Copies _____

Initial Open 30
 Initial Shut-In 30
 Final Flow 30
 Final Shut-In 30
 Accessibility _____ Sub Total 1980
 Sub Total _____

Approved By _____ Our Representative [Signature]

TriLOBITE Testing Inc. shall not be liable for damaged of any kind of the property or personnel of the one for whom a test is made, or for any loss suffered or sustained, directly or indirectly, through the use of its equipment, or its statements or opinion concerning the results of any test, tools lost or damaged in the hole shall be paid for at cost by the party for whom the test is made.



TRILOBITE TESTING INC.

P.O. Box 1733 • Hays, Kansas 67601

Test Ticket

NO. 48905

Well Name & No. M'Kinnic-Schwartzkopf # 1 Test No. 4 Date 10/12/12
 Company Palemino Petroleum, Inc Elevation 2660 KB 2650 GL
 Address 4924 SE 84th ST Newton, KS 67114-8827
 Co. Rep / Geo. Ryan Seile Rig Val Rig 2
 Location: Sec. 29 Twp. 16S Rge. 26W Co. Ness State KS

Interval Tested 4440 - 4495 Zone Tested Fort Scott
 Anchor Length 55 Drill Pipe Run 4421.91 Mud Wt. 9.4
 Top Packer Depth 4436 Drill Collars Run _____ Vis 45
 Bottom Packer Depth 4440 Wt. Pipe Run _____ WL 7.2
 Total Depth 4495 Chlorides 2,100 ppm System LCM Ø

Blow Description Weak surface below
No return below
Weak surface below
No return below

Rec	Feet of	%gas	%oil	%water	%mud
<u>5</u>	<u>Mud</u>			<u>100</u>	
Rec	Feet of	%gas	%oil	%water	%mud
Rec	Feet of	%gas	%oil	%water	%mud
Rec	Feet of	%gas	%oil	%water	%mud
Rec	Feet of	%gas	%oil	%water	%mud

Rec Total 5 BHT 115 Gravity _____ API RW _____ @ _____ °F Chlorides _____ ppm

(A) Initial Hydrostatic <u>2,169</u>	<input checked="" type="checkbox"/> Test 1250	T-On Location <u>6:25</u>
(B) First Initial Flow <u>18</u>	<input checked="" type="checkbox"/> Jars 250	T-Started <u>6:50</u>
(C) First Final Flow <u>20</u>	<input checked="" type="checkbox"/> Safety Joint 75	T-Open <u>9:12</u>
(D) Initial Shut-In <u>123</u>	<input checked="" type="checkbox"/> Circ Sub <u>N/C</u>	T-Pulled <u>11:12</u>
(E) Second Initial Flow <u>20</u>	<input type="checkbox"/> Hourly Standby	T-Out <u>13:12</u>
(F) Second Final Flow <u>20</u>	<input checked="" type="checkbox"/> Mileage <u>100 RT</u> 155	Comments _____
(G) Final Shut-In <u>78</u>	<input type="checkbox"/> Sampler	<input type="checkbox"/> Ruined Shale Packer
(H) Final Hydrostatic <u>2,136</u>	<input type="checkbox"/> Straddle	<input type="checkbox"/> Ruined Packer
Initial Open <u>30</u>	<input checked="" type="checkbox"/> Shale Packer 250	<input type="checkbox"/> Extra Copies
Initial Shut-In <u>30</u>	<input type="checkbox"/> Extra Packer	Sub Total <u>0</u>
Final Flow <u>30</u>	<input type="checkbox"/> Extra Recorder	Total <u>1980</u>
Final Shut-In <u>30</u>	<input type="checkbox"/> Day Standby	MP/DST Disc't _____
	<input checked="" type="checkbox"/> Accessibility	
	Sub Total <u>1980</u>	

Approved By _____ Our Representative [Signature]

Trilobite Testing Inc. shall not be liable for damaged of any kind of the property or personnel of the one for whom a test is made, or for any loss suffered or sustained, directly or indirectly, through the use of its equipment, or its statements or opinion concerning the results of any test, tools lost or damaged in the hole shall be paid for at cost by the party for whom the test is made.



TRILOBITE TESTING INC.

P.O. Box 1733 • Hays, Kansas 67601

Test Ticket

NO. 48906

Well Name & No. McKinnie-Schwartzkopf #1 Test No. 5 Date 10/13/12
 Company Palomino Petroleum, Inc Elevation 2660 KB 2650 GL
 Address 4924 SE 84th ST Newton, KS 67114-8827
 Co. Rep / Geo. Ryan Seile Rig Val Rig 2
 Location: Sec. 29 Twp. 16S Rge. 26W Co. Ness State KS

Interval Tested 4530-4602 Zone Tested Miss.
 Anchor Length 72 Drill Pipe Run 4515.31 Mud Wt. 9.2
 Top Packer Depth 4526 Drill Collars Run _____ Vis 49
 Bottom Packer Depth 4530 Wt. Pipe Run _____ WL 7.2
 Total Depth 4602 Chlorides 3,200 ppm System LCM Trace

Blow Description B.O.B. in 24 min.
Bled off for 5 min. Built to 1/4" return below
B.O.B. in 28 min.

Bled off for 5 min. Built to 1/4" return below

Rec	Feet of	%gas	%oil	%water	%mud
<u>0</u>	<u>62 feet GFP</u>				
<u>30</u>	<u>WCOWM</u>		<u>40</u>	<u>10</u>	<u>50</u>
<u>124</u>	<u>OCWM</u>		<u>10</u>	<u>30</u>	<u>40</u>
<u>124</u>	<u>ECOWM</u>	<u>5</u>	<u>5</u>	<u>40</u>	<u>50</u>
Rec	Feet of	%gas	%oil	%water	%mud

Rec Total 278 BHT 123 Gravity _____ API RW 15 @ 60 ° F Chlorides 60,000 ppm
 (A) Initial Hydrostatic 2,275 Test 1250 T-On Location 1:25
 (B) First Initial Flow 30 Jars 250 T-Started 1:55
 (C) First Final Flow 98 Safety Joint 75 T-Open 4:46
 (D) Initial Shut-In 1,011 Circ Sub N/C T-Pulled 6:49
 (E) Second Initial Flow 107 Hourly Standby _____ T-Out 9:32
 (F) Second Final Flow 154 Mileage 100KT 155 Comments _____
 (G) Final Shut-In 963 Sampler _____
 (H) Final Hydrostatic 2,212 Straddle _____ Ruined Shale Packer 350
 Ruined Packer _____

Initial Open 30 Extra Packer _____ Extra Copies _____
 Initial Shut-In 30 Extra Recorder _____ Sub Total 350
 Final Flow 30 Day Standby _____ Total 2330
 Final Shut-In 30 Accessibility _____ MP/DST Disc't _____
 Sub Total 1980

Approved By _____ Our Representative [Signature]

Trilobite Testing Inc. shall not be liable for damaged of any kind of the property or personnel of the one for whom a test is made, or for any loss suffered or sustained, directly or indirectly, through the use of its equipment, or its statements or opinion concerning the results of any test, tools lost or damaged in the hole shall be paid for at cost by the party for whom the test is made.