



**TRILOBITE  
TESTING, INC.**

# DRILL STEM TEST REPORT

Berexco LLC  
2020 N.Bramblewood  
Wichita Ks.67206  
ATTN: David Gould

**30-23s-23w Hodgeman Ks**

**Ray #1**

Job Ticket: 49612

**DST#: 1**

Test Start: 2012.10.05 @ 05:13:33

## GENERAL INFORMATION:

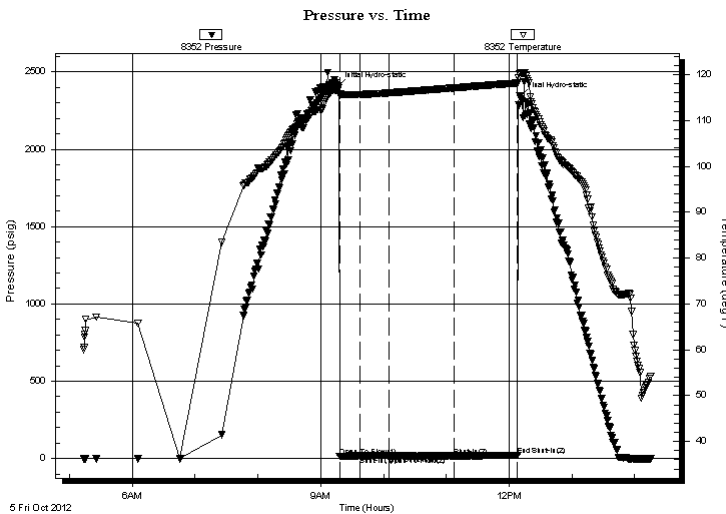
Formation: **Cherokee**  
 Deviated: No Whipstock: ft (KB)  
 Time Tool Opened: 09:18:03  
 Time Test Ended: 14:15:33  
 Interval: **4689.00 ft (KB) To 4695.00 ft (KB) (TVD)**  
 Total Depth: 4695.00 ft (KB) (TVD)  
 Hole Diameter: 7.88 inches Hole Condition: Fair  
 Test Type: Conventional Bottom Hole (Initial)  
 Tester: Gary Pevoteaux  
 Unit No: 56  
 Reference Elevations: 2451.00 ft (KB)  
 2438.00 ft (CF)  
 KB to GR/CF: 13.00 ft

**Serial #: 8352 Outside**

Press @ RunDepth: 16.02 psig @ 4690.00 ft (KB) Capacity: 8000.00 psig  
 Start Date: 2012.10.05 End Date: 2012.10.05 Last Calib.: 2012.10.05  
 Start Time: 05:13:38 End Time: 14:15:33 Time On Btm: 2012.10.05 @ 09:16:33  
 Time Off Btm: 2012.10.05 @ 12:10:18

**TEST COMMENT:** IF:Weak blow . 1/4" or less.Dead in 15 mins.  
 IS:No blow .  
 FF:No blow .  
 FS:No blow .

## PRESSURE SUMMARY



Time (Min.)	Pressure (psig)	Temp (deg F)	Annotation
0	2403.68	116.58	Initial Hydro-static
2	15.05	115.52	Open To Flow (1)
21	16.30	115.67	Shut-In(1)
49	22.00	116.01	End Shut-In(1)
49	16.30	116.01	Open To Flow (2)
111	16.02	117.10	Shut-In(2)
172	20.37	118.16	End Shut-In(2)
174	2339.72	120.20	Final Hydro-static

## Recovery

Length (ft)	Description	Volume (bbl)
1.00	Drig.mud	0.01

## Gas Rates

Choke (inches)	Pressure (psig)	Gas Rate (Mcf/d)



**TRILOBITE  
TESTING, INC.**

# DRILL STEM TEST REPORT

**FLUID SUMMARY**

Berexco LLC

**30-23s-23w Hodgeman Ks**

2020 N.Bramblewood  
Wichita Ks.67206

**Ray #1**

Job Ticket: 49612

**DST#: 1**

ATTN: David Gould

Test Start: 2012.10.05 @ 05:13:33

## Mud and Cushion Information

Mud Type: Gel Chem

Cushion Type:

Oil API:

deg API

Mud Weight: 10.00 lb/gal

Cushion Length:

ft

Water Salinity:

4000 ppm

Viscosity: 56.00 sec/qt

Cushion Volume:

bbbl

Water Loss: 9.59 in<sup>3</sup>

Gas Cushion Type:

Resistivity: 0.00 ohm.m

Gas Cushion Pressure:

psig

Salinity: 4000.00 ppm

Filter Cake: 0.20 inches

## Recovery Information

Recovery Table

Length ft	Description	Volume bbl
1.00	Drilg.mud	0.014

Total Length: 1.00 ft      Total Volume: 0.014 bbl

Num Fluid Samples: 0

Num Gas Bombs: 0

Serial #: none

Laboratory Name:

Laboratory Location:

Recovery Comments:

