



DRILL STEM TEST REPORT

Prepared For: **White Exploration Inc**

2400 N Woodlawn Ste 115
Wichita, KS 67220-3966

ATTN: Dave Goldak

Ruby #1-X

8-30s-31w Haskell,KS

Start Date: 2012.10.09 @ 18:05:50

End Date: 2012.10.10 @ 03:00:35

Job Ticket #: 50164 DST #: 1

Trilobite Testing, Inc
PO Box 362 Hays, KS 67601
ph: 785-625-4778 fax: 785-625-5620

Printed: 2012.10.15 @ 11:43:45



**TRILOBITE
TESTING, INC.**

DRILL STEM TEST REPORT

TOOL DIAGRAM

White Exploration Inc

8-30s-31w Haskell, KS

2400 N Woodlaw n Ste 115
Wichita, KS 67220-3966

Ruby #1-X

Job Ticket: 50164

DST#: 1

ATTN: Dave Goldak

Test Start: 2012.10.09 @ 18:05:50

Tool Information

Drill Pipe:	Length: 4948.00 ft	Diameter: 3.80 inches	Volume: 69.41 bbl	Tool Weight: 2000.00 lb
Heavy Wt. Pipe:	Length: 0.00 ft	Diameter: 0.00 inches	Volume: 0.00 bbl	Weight set on Packer: 25000.00 lb
Drill Collar:	Length: 234.00 ft	Diameter: 2.25 inches	Volume: 1.15 bbl	Weight to Pull Loose: 82000.00 lb
			<u>Total Volume: 70.56 bbl</u>	Tool Chased 0.00 ft
Drill Pipe Above KB:	19.00 ft			String Weight: Initial 62000.00 lb
Depth to Top Packer:	5192.00 ft			Final 62000.00 lb
Depth to Bottom Packer:	ft			
Interval between Packers:	62.00 ft			
Tool Length:	91.00 ft			
Number of Packers:	2	Diameter: 6.75 inches		

Tool Comments:

Tool Description

Tool Description	Length (ft)	Serial No.	Position	Depth (ft)	Accum. Lengths
Change Over Sub	1.00			5164.00	
Shut In Tool	5.00			5169.00	
Sampler	2.00			5171.00	
Hydraulic tool	5.00			5176.00	
Jars	5.00			5181.00	
Safety Joint	2.00			5183.00	
Packer	5.00			5188.00	29.00 Bottom Of Top Packer
Packer	4.00			5192.00	
Stubb	1.00			5193.00	
Recorder	0.00	6667	Outside	5193.00	
Recorder	0.00	8368	Inside	5193.00	
Perforations	23.00			5216.00	
Change Over Sub	1.00			5217.00	
Drill Pipe	31.00			5248.00	
Change Over Sub	1.00			5249.00	
Bullnose	5.00			5254.00	62.00 Bottom Packers & Anchor
Total Tool Length:	91.00				



**TRILOBITE
TESTING, INC.**

DRILL STEM TEST REPORT

FLUID SUMMARY

White Exploration Inc

8-30s-31w Haskell, KS

2400 N Woodlaw n Ste 115
Wichita, KS 67220-3966

Ruby #1-X

Job Ticket: 50164

DST#: 1

ATTN: Dave Goldak

Test Start: 2012.10.09 @ 18:05:50

Mud and Cushion Information

Mud Type: Gel Chem

Cushion Type:

Oil API:

0 deg API

Mud Weight: 9.00 lb/gal

Cushion Length:

ft

Water Salinity:

0 ppm

Viscosity: 52.00 sec/qt

Cushion Volume:

bbbl

Water Loss: 10.73 in³

Gas Cushion Type:

Resistivity: 0.00 ohm.m

Gas Cushion Pressure:

psig

Salinity: 1900.00 ppm

Filter Cake: 1.00 inches

Recovery Information

Recovery Table

Length ft	Description	Volume bbl
5.00	mud 100% m	0.025

Total Length: 5.00 ft Total Volume: 0.025 bbl

Num Fluid Samples: 0

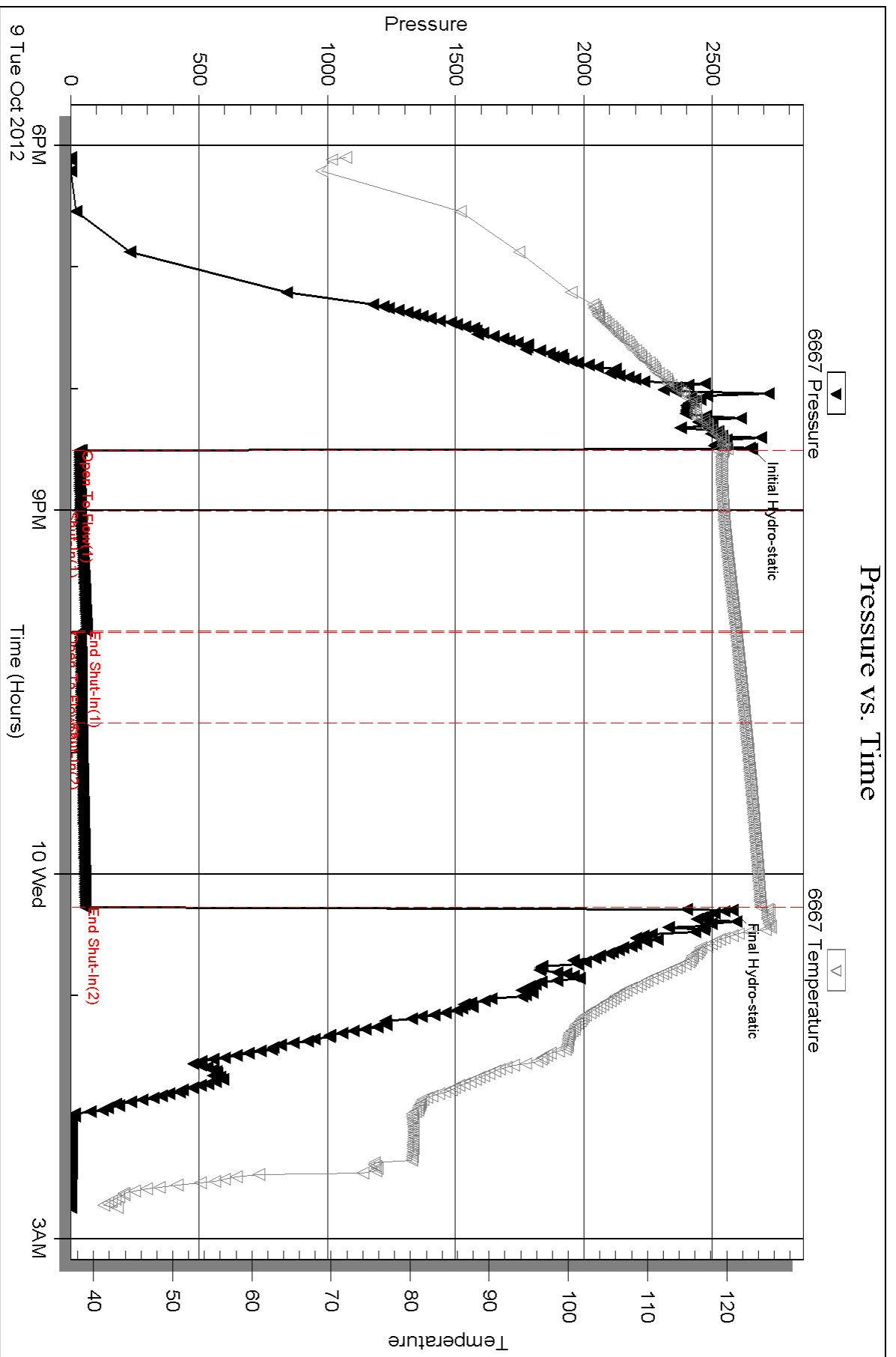
Num Gas Bombs: 0

Serial #:

Laboratory Name:

Laboratory Location:

Recovery Comments: sampler 2000 ml mud 0 psi



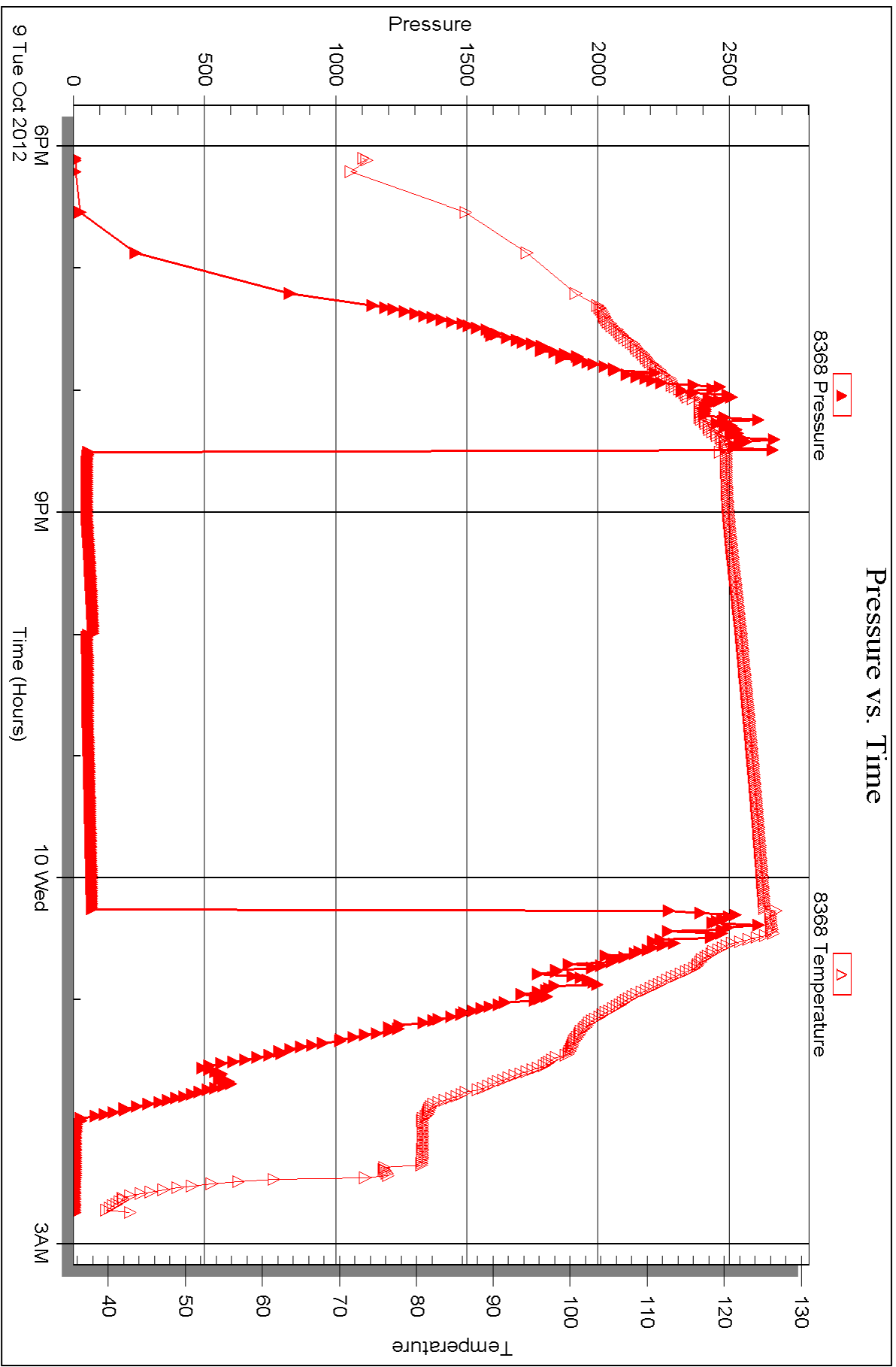
Serial #: 8368

Inside

White Exploration Inc

Ruby #1-X

DST Test Number: 1





DRILL STEM TEST REPORT

Prepared For: **White Exploration Inc**

2400 N Woodlawn Ste 115
Wichita, KS 67220-3966

ATTN: Dave Goldak

Ruby #1-X

8-30s-31w Haskell,KS

Start Date: 2012.10.12 @ 11:40:51

End Date: 2012.10.12 @ 21:45:51

Job Ticket #: 50165 DST #: 2

Trilobite Testing, Inc

PO Box 362 Hays, KS 67601

ph: 785-625-4778 fax: 785-625-5620

Printed: 2012.10.15 @ 11:42:41



TRILOBITE TESTING, INC.

DRILL STEM TEST REPORT

White Exploration Inc
 2400 N Woodlaw n Ste 115
 Wichita, KS 67220-3966
 ATTN: Dave Goldak

8-30s-31w Haskell, KS
Ruby #1-X
 Job Ticket: 50165 **DST#: 2**
 Test Start: 2012.10.12 @ 11:40:51

GENERAL INFORMATION:

Formation: **St. Louis**
 Deviated: No Whipstock: ft (KB)
 Time Tool Opened: 14:18:21
 Time Test Ended: 21:45:51
Interval: 5576.00 ft (KB) To 5600.00 ft (KB) (TVD)
 Total Depth: 5700.00 ft (KB) (TVD)
 Hole Diameter: 7.88 inches Hole Condition: Fair
 Test Type: Conventional Straddle (Reset)
 Tester: Shane McBride
 Unit No: 55
 Reference Elevations: 2842.00 ft (KB)
 2831.00 ft (CF)
 KB to GR/CF: 11.00 ft

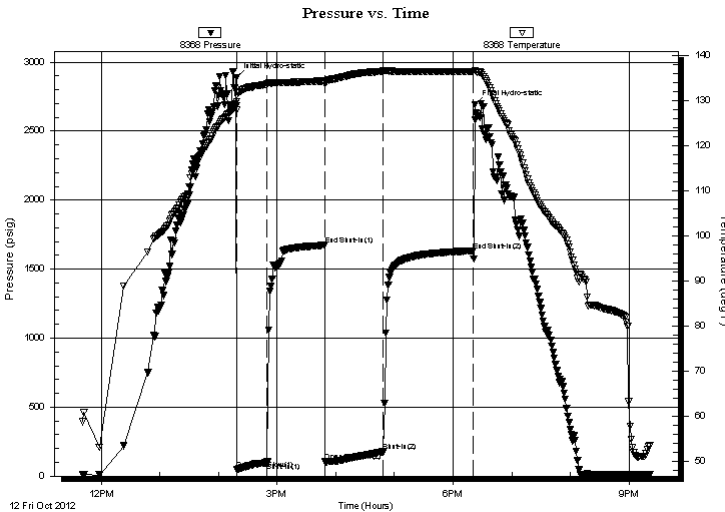
Serial #: 8368

Outside

Press @ Run Depth: 177.63 psig @ 5577.00 ft (KB) Capacity: 8000.00 psig
 Start Date: 2012.10.12 End Date: 2012.10.12 Last Calib.: 2012.10.12
 Start Time: 11:40:51 End Time: 21:21:51 Time On Btm: 2012.10.12 @ 14:18:06
 Time Off Btm: 2012.10.12 @ 18:22:36

TEST COMMENT: 4" blow
 No return
 3 3/4" blow
 No return

PRESSURE SUMMARY



Time (Min.)	Pressure (psig)	Temp (deg F)	Annotation
0	2887.97	128.87	Initial Hydro-static
1	49.08	127.91	Open To Flow (1)
32	96.29	133.67	Shut-In(1)
91	1677.52	134.36	End Shut-In(1)
91	103.73	133.80	Open To Flow (2)
151	177.63	136.51	Shut-In(2)
243	1632.87	136.40	End Shut-In(2)
245	2693.73	136.54	Final Hydro-static

Recovery

Length (ft)	Description	Volume (bbl)
190.00	s m c w 15% m 85% w	0.93
120.00	w c m 40% w 60% m	0.59

* Recovery from multiple tests

Gas Rates

Choke (inches)	Pressure (psig)	Gas Rate (Mcf/d)



**TRILOBITE
TESTING, INC.**

DRILL STEM TEST REPORT

TOOL DIAGRAM

White Exploration Inc
2400 N Woodlaw n Ste 115
Wichita, KS 67220-3966
ATTN: Dave Goldak

8-30s-31w Haskell, KS
Ruby #1-X
Job Ticket: 50165 **DST#: 2**
Test Start: 2012.10.12 @ 11:40:51

Tool Information

Drill Pipe:	Length: 5041.00 ft	Diameter: 3.80 inches	Volume: 70.71 bbl	Tool Weight: 2000.00 lb
Heavy Wt. Pipe:	Length: 0.00 ft	Diameter: 0.00 inches	Volume: 0.00 bbl	Weight set on Packer: 25000.00 lb
Drill Collar:	Length: 531.00 ft	Diameter: 2.25 inches	Volume: 2.61 bbl	Weight to Pull Loose: 100000.0 lb
			<u>Total Volume: 73.32 bbl</u>	Tool Chased 0.00 ft
Drill Pipe Above KB:	25.00 ft			String Weight: Initial 78000.00 lb
Depth to Top Packer:	5576.00 ft			Final 79000.00 lb
Depth to Bottom Packer:	5600.00 ft			
Interval between Packers:	24.00 ft			
Tool Length:	154.00 ft			
Number of Packers:	3	Diameter: 6.75 inches		

Tool Comments:

Tool Description	Length (ft)	Serial No.	Position	Depth (ft)	Accum. Lengths
Change Over Sub	1.00			5548.00	
Shut In Tool	5.00			5553.00	
Sampler	2.00			5555.00	
Hydraulic tool	5.00			5560.00	
Jars	5.00			5565.00	
Safety Joint	2.00			5567.00	
Packer	5.00			5572.00	29.00 Bottom Of Top Packer
Packer	4.00			5576.00	
Stubb	1.00			5577.00	
Recorder	0.00	8368	Outside	5577.00	
Recorder	0.00	6667	Inside	5577.00	
Perforations	19.00			5596.00	
Blank Off Sub	1.00			5597.00	
top of s packer	3.00			5600.00	24.00 Tool Interval
Packer	1.00			5601.00	
Stubb	1.00			5602.00	
Change Over Sub	1.00			5603.00	
Recorder	0.00	6771	Below	5603.00	
Drill Pipe	92.00			5695.00	
Change Over Sub	1.00			5696.00	
Bullnose	5.00			5701.00	101.00 Bottom Packers & Anchor
Total Tool Length:	154.00				



**TRILOBITE
TESTING, INC.**

DRILL STEM TEST REPORT

FLUID SUMMARY

White Exploration Inc

8-30s-31w Haskell, KS

2400 N Woodlaw n Ste 115
Wichita, KS 67220-3966

Ruby #1-X

Job Ticket: 50165

DST#: 2

ATTN: Dave Goldak

Test Start: 2012.10.12 @ 11:40:51

Mud and Cushion Information

Mud Type: Gel Chem

Cushion Type:

Oil API:

0 deg API

Mud Weight: 9.00 lb/gal

Cushion Length:

ft

Water Salinity:

31000 ppm

Viscosity: 59.00 sec/qt

Cushion Volume:

bbbl

Water Loss: 11.14 in³

Gas Cushion Type:

Resistivity: 0.00 ohm.m

Gas Cushion Pressure:

psig

Salinity: 1650.00 ppm

Filter Cake: 1.00 inches

Recovery Information

Recovery Table

Length ft	Description	Volume bbl
190.00	s m c w 15% m 85% w	0.934
120.00	w c m 40% w 60% m	0.590

Total Length: 310.00 ft Total Volume: 1.524 bbl

Num Fluid Samples: 0

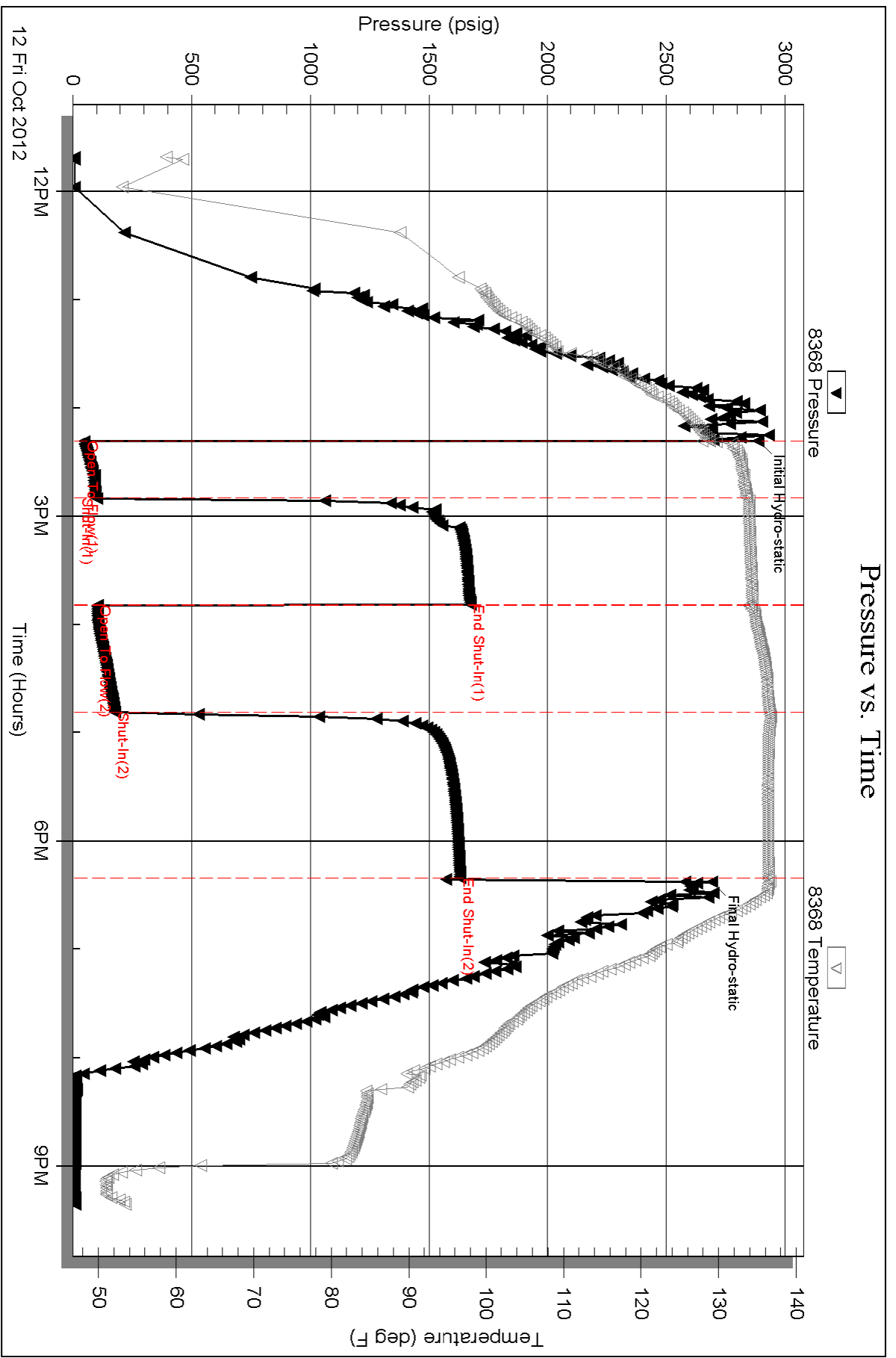
Num Gas Bombs: 0

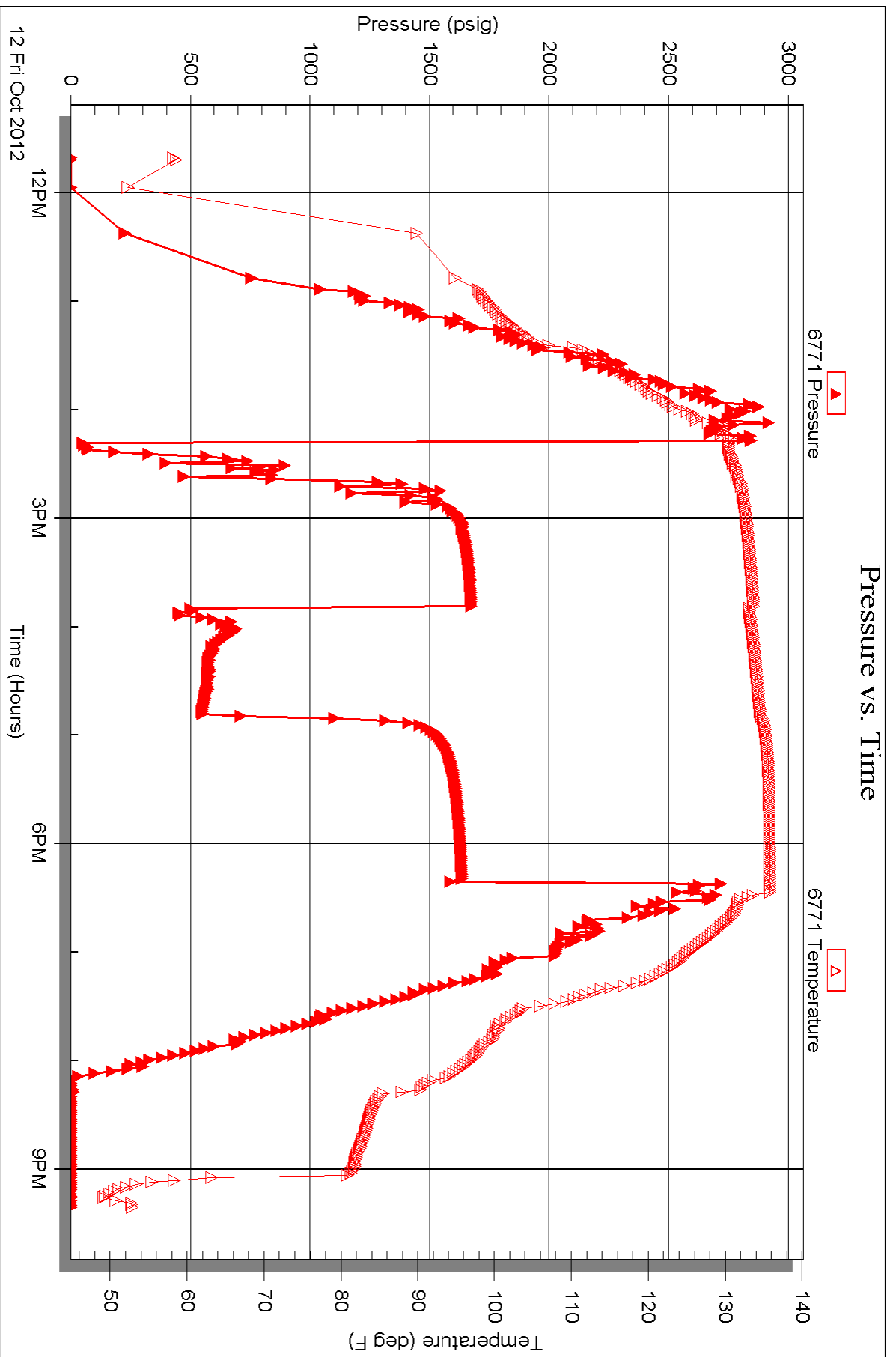
Serial #:

Laboratory Name:

Laboratory Location:

Recovery Comments: sampler 1000 ml mud 1000 ml water 2000 ml total 880 psi
rw .278 @ 55°f = 31,000 chlor





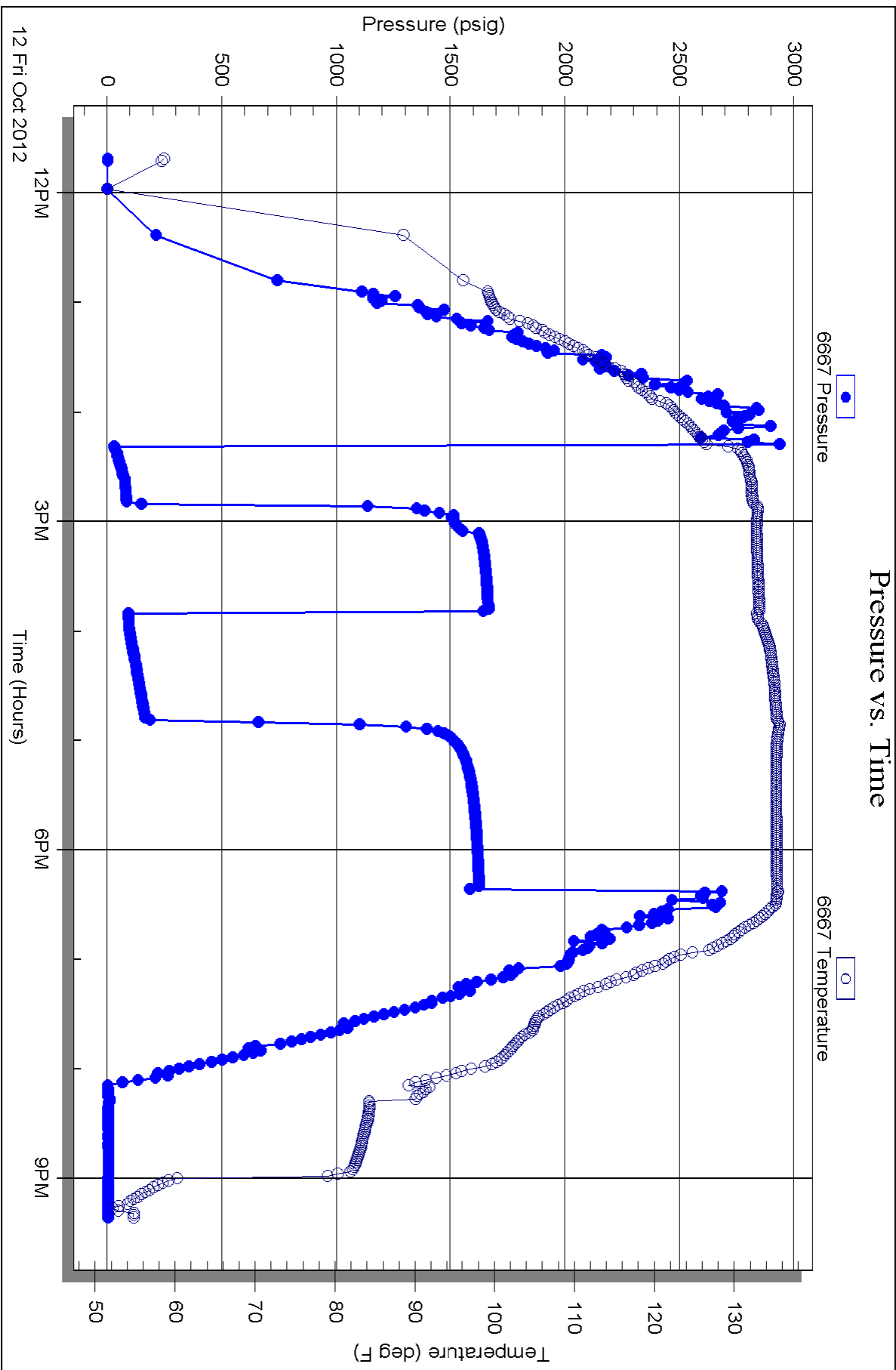
Serial #: 6667

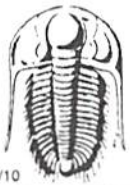
Inside

White Exploration Inc

Ruby #1-X

DST Test Number: 2





TRILOBITE TESTING INC.

1515 Commerce Parkway • Hays, Kansas 67601

Test Ticket

NO. 50164

Well Name & No. Ruby # 1-X Test No. #1 Date 10/10/12
 Company White Exploration Inc. Elevation 2842 KB 2831 GL
 Address 2400 N. Woodhawn Ste 115, Wichita, KS 67260-3966
 Co. Rep / Geo. Dave Goldak Rig Murfin #22
 Location: Sec. 8 Twp. 30 S Rge. 31 W Co. Haskell State Ks

Interval Tested 5192 5254 Zone Tested Mallow
 Anchor Length 62 Drill Pipe Run 4948 Mud Wt. 9.7
 Top Packer Depth 5187 Drill Collars Run 234' Vis 52
 Bottom Packer Depth 5192 Wt. Pipe Run — WL 10.8
 Total Depth 5254 Chlorides 1900 ppm System LCM #6

Blow Description 1/4" blow died in 20 min
No return
No blow
No return

Rec	Feet of	%gas	%oil	%water	%mud
<u>5'</u>	<u>Mud</u>			<u>100</u>	
Rec	Feet of	%gas	%oil	%water	%mud
Rec	Feet of	%gas	%oil	%water	%mud
Rec	Feet of	%gas	%oil	%water	%mud
Rec	Feet of	%gas	%oil	%water	%mud

Rec Total 5' BHT 125° Gravity — API RW — @ —° F Chlorides — ppm

(A) Initial Hydrostatic <u>2654</u>	<input checked="" type="checkbox"/> Test 1350	T-On Location <u>17:30</u>
(B) First Initial Flow <u>34</u>	<input checked="" type="checkbox"/> Jars 250	T-Started <u>18:05</u>
(C) First Final Flow <u>37</u>	<input checked="" type="checkbox"/> Safety Joint 75	T-Open <u>20:30</u>
(D) Initial Shut-In <u>62</u>	<input checked="" type="checkbox"/> Circ Sub <u>N/C</u>	T-Pulled <u>00:15</u>
(E) Second Initial Flow <u>39</u>	<input type="checkbox"/> Hourly Standby	T-Out <u>03:00</u>
(F) Second Final Flow <u>42</u>	<input checked="" type="checkbox"/> Mileage <u>166 RT</u> 90xt 139.50	Comments
(G) Final Shut-In <u>57</u>	<input checked="" type="checkbox"/> Sampler 250	
(H) Final Hydrostatic <u>2578</u>	<input type="checkbox"/> Straddle	

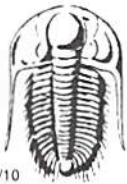
Initial Open 30
 Initial Shut-In 60
 Final Flow 45
 Final Shut-In 90

Sub Total 2064.50

MP/DST Disc't

Approved By [Signature] Our Representative [Signature]

TriLOBITE TESTING INC. shall not be liable for damaged of any kind of the property or personnel of the one for whom a test is made, or for any loss suffered or sustained, directly or indirectly, through the use of its equipment, or its statements or opinion concerning the results of any test, tools lost or damaged in the hole shall be paid for at cost by the party for whom the test is made.



TRILOBITE TESTING INC.

1515 Commerce Parkway • Hays, Kansas 67601

Test Ticket

NO. 50165

4/10

Well Name & No. Ruby #1-X Test No. #2 Date _____
 Company White Exploration Inc. Elevation 2842 KB 2831 GL _____
 Address 2400 N. Woodlawn Ste. 115, Wichita, Ks 67220-3960
 Co. Rep / Geo. Dave Goldak Rig Muffin #22
 Location: Sec. 8 Twp. 30s Rge. 31w Co. Haskell State Ks

Interval Tested 5576 5600 Zone Tested St. Louis
 Anchor Length 24 Drill Pipe Run 5041' Mud Wt. 9.4
 Top Packer Depth 5571 - 5576 Drill Collars Run 531' Vis 59
 Bottom Packer Depth 5600 Wt. Pipe Run _____ WL 11.2
 Total Depth 5700 Chlorides 1650 ppm System LCM #7

Blow Description 4" id blow
No return
3 3/4" id blow
No return

Rec	Feet of	%gas	%oil	%water	%mud
<u>190</u>	<u>Feet of SMCW</u>		<u>85</u>	<u>15</u>	
<u>120</u>	<u>Feet of WCM</u>		<u>40</u>	<u>60</u>	
Rec _____	Feet of _____	%gas _____	%oil _____	%water _____	%mud _____
Rec _____	Feet of _____	%gas _____	%oil _____	%water _____	%mud _____
Rec _____	Feet of _____	%gas _____	%oil _____	%water _____	%mud _____

Rec Total 310' BHT 137° Gravity _____ API RW .278@ 55° F Chlorides 31,000 ppm

(A) Initial Hydrostatic <u>2887</u>	<input checked="" type="checkbox"/> Test 1350	T-On Location <u>11:20</u>
(B) First Initial Flow <u>49</u>	<input checked="" type="checkbox"/> Jars 250	T-Started <u>11:40</u>
(C) First Final Flow <u>96</u>	<input checked="" type="checkbox"/> Safety Joint 75	T-Open <u>14:20</u>
(D) Initial Shut-In <u>1677</u>	<input checked="" type="checkbox"/> Circ Sub <u>N/C</u>	T-Pulled <u>18:20</u>
(E) Second Initial Flow <u>103</u>	<input type="checkbox"/> Hourly Standby _____	T-Out <u>21:45</u>
(F) Second Final Flow <u>177</u>	<input checked="" type="checkbox"/> Mileage <u>166 RT</u> 139.50	Comments _____
(G) Final Shut-In <u>1632</u>	<input checked="" type="checkbox"/> Sampler 250	<input type="checkbox"/> Ruined Shale Packer _____
(H) Final Hydrostatic <u>2693</u>	<input checked="" type="checkbox"/> Straddle 600	<input type="checkbox"/> Ruined Packer _____
	<input checked="" type="checkbox"/> Shale Packer 250	<input type="checkbox"/> Extra Copies _____

Initial Open 30
 Initial Shut-In 60
 Final Flow 60
 Final Shut-In 90

Extra Packer _____
 Extra Recorder _____
 Day Standby _____
 Accessibility _____

Sub Total 2914.50

Total 2914.50

MP/DST Disc't

Approved By [Signature] Our Representative [Signature]

Trilobite Testing Inc. shall not be liable for damaged of any kind of the property or personnel of the one for whom a test is made, or for any loss suffered or sustained, directly or indirectly, through the use of its equipment, or its statements of opinion concerning the results of any test, tools lost or damaged in the hole shall be paid for at cost by the party for whom the test is made.



TRILOBITE TESTING, INC.

P.O. Box 362 • Hays, Kansas 67601

FLUID SAMPLER DATA

Ticket No. 50165 Date 10/12/12
 Company Name White Exploration Inc. (Straddle Test T.O. 5700)
 Lease Ruby #1-X Test No. #2 (5576-5600) St. Louis
 County Haskell Sec. 8 Twp. 30S Rng. 31W

SAMPLER RECOVERY

PIT MUD ANALYSIS

Gas	<u>—</u>	ML	Chlorides	<u>1650</u>	ppm.
Oil	<u>—</u>	ML	Resistivity	<u>5.15</u>	ohms @ <u>50°</u> F
Mud	<u>1000</u>	ML	Viscosity	<u>59</u>	
Water	<u>1000</u>	ML	Mud Weight	<u>9.4</u>	
Other	<u>—</u>	ML	Filtrate	<u>11.2</u>	
Pressure	<u>880 PSI.</u>		Other	<u>KCM #7</u>	
Total	<u>2000ml</u>	ML			

SAMPLER ANALYSIS

PIPE RECOVERY

Resistivity	<u>.278</u>	ohms @ <u>55</u>	F	TOP			
Chlorides	<u>31,000</u>		ppm.	Resistivity	<u>.278</u>	ohms @ <u>55</u>	F
				Chlorides	<u>31,000</u>		ppm.
Gravity	<u>—</u>	corrected @60F		MIDDLE			
				Resistivity	<u>.278</u>	ohms @ <u>55</u>	F
				Chlorides	<u>31,000</u>		ppm.
				BOTTOM			
				Resistivity	<u>.278</u>	ohms @ <u>55</u>	F
				Chlorides	<u>31,000</u>		ppm.