



**TRILOBITE
TESTING, INC.**

DRILL STEM TEST REPORT

Shakespeare Oil Co. Inc

26-16s-34w Scott Co

202 W. Main St
Salem IL
62881
ATTN: Tim Priest

Janzen 1 26

Job Ticket: 49852

DST#: 8

Test Start: 2012.10.14 @ 01:38:15

GENERAL INFORMATION:

Formation: **Johnson**

Deviated: No Whipstock: ft (KB)

Time Tool Opened: 04:26:45

Time Test Ended: 09:49:00

Test Type: Conventional Bottom Hole (Reset)

Tester: Mike Roberts

Unit No: 65

Interval: 4561.00 ft (KB) To 4720.00 ft (KB) (TVD)

Reference Elevations: 3114.00 ft (KB)

Total Depth: 4720.00 ft (KB) (TVD)

3109.00 ft (CF)

Hole Diameter: 7.88 inches Hole Condition: Fair

KB to GR/CF: 5.00 ft

Serial #: 8365 Outside

Press @ Run Depth: 212.92 psig @ 4656.00 ft (KB)

Capacity: 8000.00 psig

Start Date: 2012.10.14

End Date:

2012.10.14

Last Calib.: 2012.10.14

Start Time: 01:38:15

End Time:

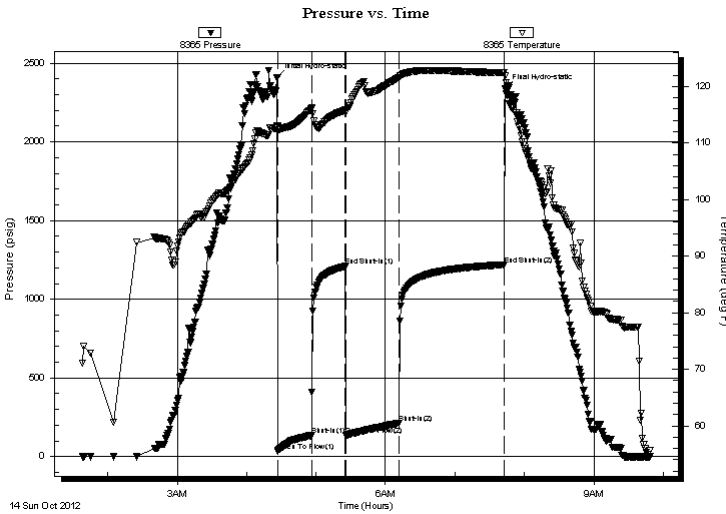
09:49:00

Time On Btm: 2012.10.14 @ 04:26:30

Time Off Btm: 2012.10.14 @ 07:43:15

TEST COMMENT: IF:BOB in 28 min.
IS:No return blow
FF:BOB in 35 min.
FS:No return blow

PRESSURE SUMMARY



Time (Min.)	Pressure (psig)	Temp (deg F)	Annotation
0	2409.19	112.96	Initial Hydro-static
1	34.65	111.97	Open To Flow (1)
30	134.62	116.07	Shut-In(1)
59	1208.91	115.79	End Shut-In(1)
60	137.05	115.34	Open To Flow (2)
105	212.92	121.54	Shut-In(2)
196	1219.53	122.40	End Shut-In(2)
197	2338.37	121.83	Final Hydro-static

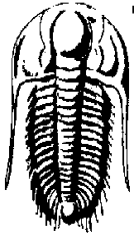
Recovery

Length (ft)	Description	Volume (bbl)
151.00	mcsw 30% m 70% sw	0.74
180.00	mcsw 50% m 50% sw	2.52
120.00	mud w ith oil spots	1.68

Gas Rates

	Choke (inches)	Pressure (psig)	Gas Rate (Mcf/d)

* Recovery from multiple tests



TRILOBITE TESTING, INC.

DRILL STEM TEST REPORT

Shakespeare Oil Co. Inc

26-16s-34w Scott Co

202 W. Main St
Salem IL
62881
ATTN: Tim Priest

Janzen 1 26

Job Ticket: 49852

DST#: 8

Test Start: 2012.10.14 @ 01:38:15

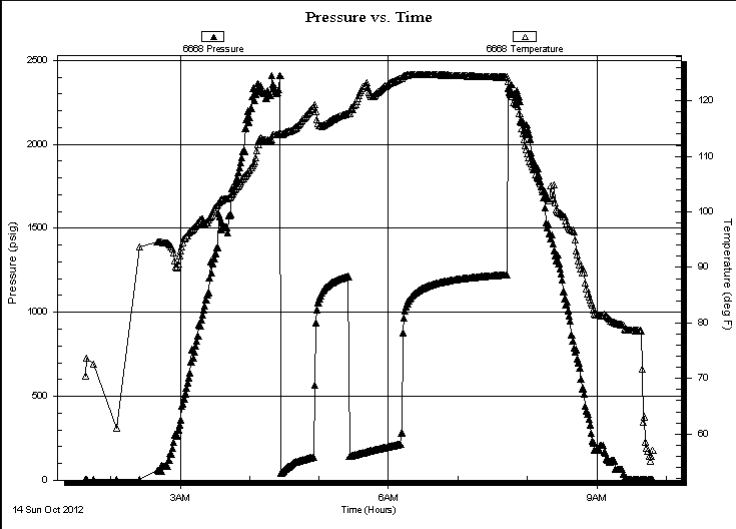
GENERAL INFORMATION:

Formation:	Johnson	Test Type:	Conventional Bottom Hole (Reset)
Deviated:	No Whipstock:	Tester:	Mike Roberts
Time Tool Opened:	04:26:45	Unit No:	65
Time Test Ended:	09:49:00	Reference Elevations:	3114.00 ft (KB)
Interval:	4561.00 ft (KB) To 4720.00 ft (KB) (TVD)		3109.00 ft (CF)
Total Depth:	4720.00 ft (KB) (TVD)	KB to GR/CF:	5.00 ft
Hole Diameter:	7.88 inches	Hole Condition:	Fair

Serial #: 6668 Inside

Press @ RunDepth:	psig @	4656.00 ft (KB)	Capacity:	8000.00 psig	
Start Date:	2012.10.14	End Date:	2012.10.14	Last Calib.:	2012.10.14
Start Time:	01:38:15	End Time:	09:48:45	Time On Btm:	
				Time Off Btm:	

TEST COMMENT:
 IF:BOB in 28 min.
 IS:No return blow
 FF:BOB in 35 min.
 FS:No return blow



PRESSURE SUMMARY

Time (Min.)	Pressure (psig)	Temp (deg F)	Annotation

Recovery

Length (ft)	Description	Volume (bbl)
151.00	mcs w 30% m 70% sw	0.74
180.00	mcs w 50% m 50% sw	2.52
120.00	mud w ith oil spots	1.68

* Recovery from multiple tests

Gas Rates

Choke (inches)	Pressure (psig)	Gas Rate (Mcf/d)



**TRILOBITE
TESTING, INC.**

DRILL STEM TEST REPORT

FLUID SUMMARY

Shakespeare Oil Co. Inc

26-16s-34w Scott Co

202 W. Main St
Salem IL
62881

Janzen 1 26

Job Ticket: 49852

DST#: 8

ATTN: Tim Priest

Test Start: 2012.10.14 @ 01:38:15

Mud and Cushion Information

Mud Type: Gel Chem

Cushion Type:

Oil API:

0 deg API

Mud Weight: 9.00 lb/gal

Cushion Length:

ft

Water Salinity:

35000 ppm

Viscosity: 64.00 sec/qt

Cushion Volume:

bbbl

Water Loss: 8.74 in³

Gas Cushion Type:

Resistivity: 0.00 ohm.m

Gas Cushion Pressure:

psig

Salinity: 7000.00 ppm

Filter Cake: 1.00 inches

Recovery Information

Recovery Table

Length ft	Description	Volume bbbl
151.00	mcsw 30%m 70%sw	0.743
180.00	mcsw 50%m 50%sw	2.525
120.00	mud w ith oil spots	1.683

Total Length: 451.00 ft Total Volume: 4.951 bbl

Num Fluid Samples: 0

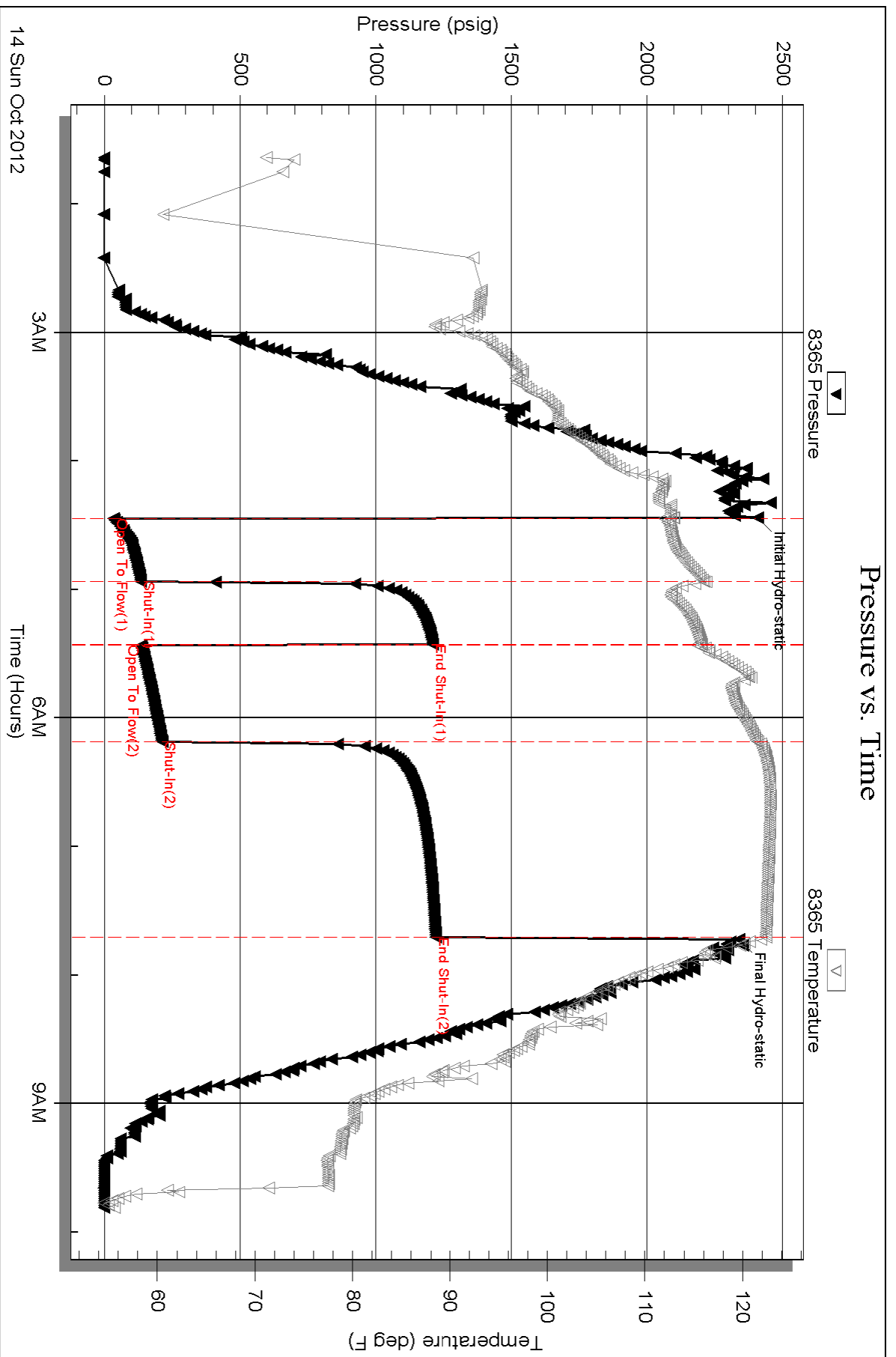
Num Gas Bombs: 0

Serial #:

Laboratory Name:

Laboratory Location:

Recovery Comments: RW=.335 @ 54*=35,000



Serial #: 6668

Inside

Shakespeare Oil Co. Inc

Janzen 1 26

DST Test Number: 8

