



TRILOBITE TESTING, INC.

DRILL STEM TEST REPORT

Shakespeare Oil Co., Inc.

27-13s-31w Gove Co.

202 W Main st
Salem, IL 62881

Parsons #2-27

Job Ticket: 50145

DST#: 3

ATTN: Tim Priest

Test Start: 2012.09.23 @ 19:52:00

GENERAL INFORMATION:

Formation: **"H & I" zone**

Deviated: No Whipstock: ft (KB)

Time Tool Opened: 21:37:00

Time Test Ended: 03:05:15

Test Type: Conventional Bottom Hole (Reset)

Tester: Sam Esparza

Unit No: 64

Interval: 4051.00 ft (KB) To 4122.00 ft (KB) (TVD)

Reference Elevations: 2848.00 ft (KB)

Total Depth: 4122.00 ft (KB) (TVD)

2838.00 ft (CF)

Hole Diameter: 7.88 inches Hole Condition:

KB to GR/CF: 10.00 ft

Serial #: 6772 Outside

Press @ Run Depth: 93.59 psig @ 4052.00 ft (KB)

Capacity: 8000.00 psig

Start Date: 2012.09.23

End Date:

2012.09.24

Last Calib.:

2012.09.24

Start Time: 19:52:05

End Time:

03:05:14

Time On Btm:

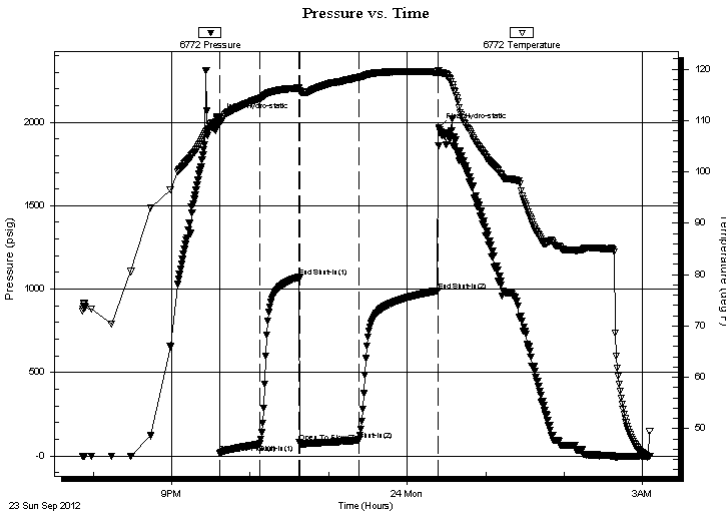
2012.09.23 @ 21:36:45

Time Off Btm:

2012.09.24 @ 00:24:30

TEST COMMENT: IF: BOB @ 28 min.
IS: Weak surface return.
FF: BOB @ 15 min.
FS: 1 1/2" return.

PRESSURE SUMMARY



Time (Min.)	Pressure (psig)	Temp (deg F)	Annotation
0	2027.70	110.47	Initial Hydro-static
1	16.79	109.92	Open To Flow (1)
31	70.03	114.27	Shut-In(1)
61	1070.66	116.30	End Shut-In(1)
61	81.31	115.87	Open To Flow (2)
107	93.59	118.39	Shut-In(2)
167	990.88	119.45	End Shut-In(2)
168	1965.31	119.38	Final Hydro-static

Recovery

Length (ft)	Description	Volume (bbl)
130.00	GOCM 10g 30o 60m	0.64
100.00	GO 50g 50o	1.19
0.00	460' GIP	0.00

* Recovery from multiple tests

Gas Rates

Choke (inches)	Pressure (psig)	Gas Rate (Mcf/d)



**TRILOBITE
TESTING, INC.**

DRILL STEM TEST REPORT

FLUID SUMMARY

Shakespeare Oil Co., Inc.

27-13s-31w Gove Co.

202 W Main st
Salem, IL 62881

Parsons #2-27

Job Ticket: 50145

DST#: 3

ATTN: Tim Priest

Test Start: 2012.09.23 @ 19:52:00

Mud and Cushion Information

Mud Type: Gel Chem	Cushion Type:	Oil API: 39 deg API
Mud Weight: 9.00 lb/gal	Cushion Length: ft	Water Salinity: ppm
Viscosity: 52.00 sec/qt	Cushion Volume: bbl	
Water Loss: 9.59 in ³	Gas Cushion Type:	
Resistivity: 0.00 ohm.m	Gas Cushion Pressure: psig	
Salinity: 3400.00 ppm		
Filter Cake: 1.00 inches		

Recovery Information

Recovery Table

Length ft	Description	Volume bbl
130.00	GOCM 10g 30o 60m	0.639
100.00	GO 50g 50o	1.193
0.00	460' GIP	0.000

Total Length: 230.00 ft Total Volume: 1.832 bbl

Num Fluid Samples: 0 Num Gas Bombs: 0 Serial #:

Laboratory Name: Laboratory Location:

Recovery Comments: Oil API: 38 @ 50 degrees= 39 API

