



**TRILOBITE  
TESTING, INC.**

# DRILL STEM TEST REPORT

Shakespeare Oil Com. INC.

**9-16S-34W-Scott KS**

202 W Main St.  
Salem, IL 62881

**KFY #1-9**

Job Ticket: 49810

**DST#: 2**

ATTN: Tim Priest

Test Start: 2012.10.25 @ 04:28:00

## GENERAL INFORMATION:

Formation: **Marmaton**

Deviated: No Whipstock: ft (KB)

Time Tool Opened: 06:33:15

Time Test Ended: 11:45:30

Test Type: Conventional Bottom Hole (Reset)

Tester: Sam Esparza

Unit No: 58

**Interval: 4415.00 ft (KB) To 4470.00 ft (KB) (TVD)**

Reference Elevations: 3142.00 ft (KB)

Total Depth: 4470.00 ft (KB) (TVD)

3132.00 ft (CF)

Hole Diameter: 7.88 inches Hole Condition: Good

KB to GR/CF: 10.00 ft

**Serial #: 8674 Inside**

Press @ Run Depth: 49.26 psig @ 4416.00 ft (KB)

Capacity: 8000.00 psig

Start Date: 2012.10.25

End Date: 2012.10.25

Last Calib.: 2012.10.25

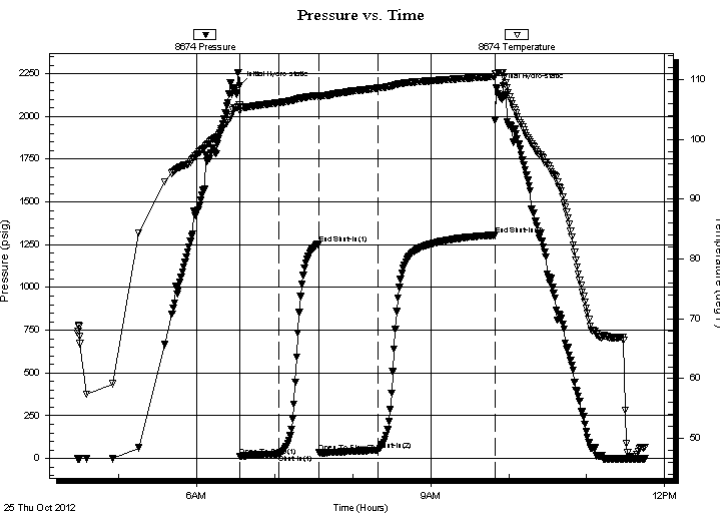
Start Time: 04:28:05

End Time: 11:45:29

Time On Btm: 2012.10.25 @ 06:33:00

Time Off Btm: 2012.10.25 @ 09:50:30

**TEST COMMENT:** IF: 2 1/2" blow.  
IS: No return.  
FF: 4 3/4" blow.  
FS: No return.



## PRESSURE SUMMARY

Time (Min.)	Pressure (psig)	Temp (deg F)	Annotation
0	2178.56	105.71	Initial Hydro-static
1	13.53	104.78	Open To Flow (1)
31	27.55	106.13	Shut-In(1)
61	1256.29	107.32	End Shut-In(1)
62	35.09	106.92	Open To Flow (2)
107	49.26	108.57	Shut-In(2)
197	1306.25	110.50	End Shut-In(2)
198	2168.98	110.98	Final Hydro-static

## Recovery

Length (ft)	Description	Volume (bbl)
60.00	GOCM 10g 30o 60m	0.30
30.00	GO 10g 90o	0.15
0.00	90' GIP	0.00

\* Recovery from multiple tests

## Gas Rates

	Choke (inches)	Pressure (psig)	Gas Rate (Mcf/d)



**TRILOBITE  
TESTING, INC.**

# DRILL STEM TEST REPORT

**FLUID SUMMARY**

Shakespeare Oil Com. INC.

**9-16S-34W-Scott KS**

202 W Main St.  
Salem, IL 62881

**KFY #1-9**

Job Ticket: 49810

**DST#: 2**

ATTN: Tim Priest

Test Start: 2012.10.25 @ 04:28:00

## Mud and Cushion Information

Mud Type: Gel Chem

Cushion Type:

Oil API:

deg API

Mud Weight: 9.00 lb/gal

Cushion Length:

ft

Water Salinity:

ppm

Viscosity: 54.00 sec/qt

Cushion Volume:

bbbl

Water Loss: 9.59 in<sup>3</sup>

Gas Cushion Type:

Resistivity: 0.00 ohm.m

Gas Cushion Pressure:

psig

Salinity: 5000.00 ppm

Filter Cake: 1.00 inches

## Recovery Information

Recovery Table

Length ft	Description	Volume bbbl
60.00	GOCM 10g 30o 60m	0.295
30.00	GO 10g 90o	0.148
0.00	90' GIP	0.000

Total Length: 90.00 ft      Total Volume: 0.443 bbl

Num Fluid Samples: 0

Num Gas Bombs: 0

Serial #:

Laboratory Name:

Laboratory Location:

Recovery Comments:

