



**TRILOBITE  
TESTING, INC.**

# DRILL STEM TEST REPORT

Strata Expl.Inc.

**6-27s-19w Kiowa Ks.**

P.O.Box 401  
Fairfield Il. 62837

**Rose#1-6**

Job Ticket: 47583

**DST#: 2**

ATTN: Jon Christensen

Test Start: 2012.07.19 @ 14:09:05

## GENERAL INFORMATION:

Formation: **Lans. B**

Deviated: No Whipstock: ft (KB)

Time Tool Opened: 16:39:50

Time Test Ended: 22:03:05

Test Type: Conventional Bottom Hole (Reset)

Tester: Gary Pevoteaux

Unit No: 56

**Interval: 4236.00 ft (KB) To 4258.00 ft (KB) (TVD)**

Reference Elevations: 2263.00 ft (KB)

Total Depth: 4258.00 ft (KB) (TVD)

2252.00 ft (CF)

Hole Diameter: 7.88 inches Hole Condition: Fair

KB to GR/CF: 11.00 ft

**Serial #: 8352 Outside**

Press @ Run Depth: 178.35 psig @ 4237.00 ft (KB)

Capacity: 8000.00 psig

Start Date: 2012.07.19

End Date:

2012.07.19

Last Calib.:

2012.07.19

Start Time:

14:09:10

End Time:

22:03:04

Time On Btm:

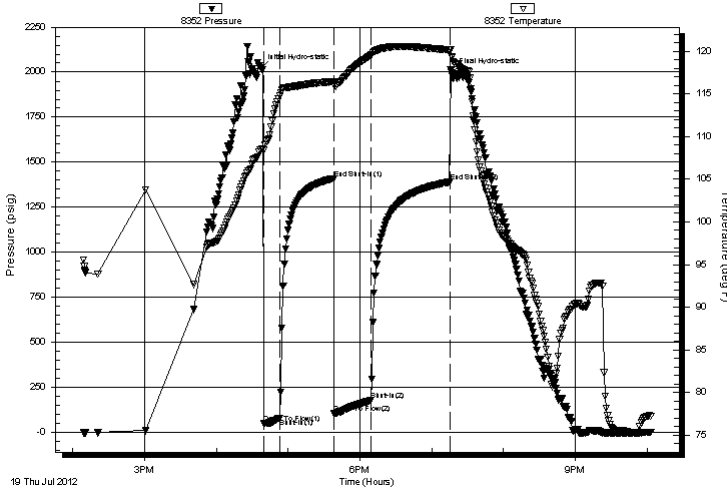
2012.07.19 @ 16:37:05

Time Off Btm:

2012.07.19 @ 19:16:35

**TEST COMMENT:** IF: Strong blow . B.O.B. in 25 secs.  
IS: Weak blow . 1/2 - 2".  
FF: Strong blow . B.O.B. in 4 mins.  
FS: Fair blow . 2 - 10".

Pressure vs. Time



## PRESSURE SUMMARY

Time (Min.)	Pressure (psig)	Temp (deg F)	Annotation
0	2021.72	108.50	Initial Hydro-static
3	50.51	108.39	Open To Flow (1)
16	81.67	114.79	Shut-In(1)
61	1409.88	116.43	End Shut-In(1)
62	107.05	116.10	Open To Flow (2)
93	178.35	119.53	Shut-In(2)
158	1391.15	120.15	End Shut-In(2)
160	1997.85	119.41	Final Hydro-static

## Recovery

Length (ft)	Description	Volume (bbl)
235.00	SOCMW 1%o 6%w 93%w	1.32
0.00	Rw .075 ohms @84 deg	0.00
155.00	GM&WCO 12%g 24%w 19%w 45%o	2.17
0.00	1100 ft.of GIP	0.00

\* Recovery from multiple tests

## Gas Rates

	Choke (inches)	Pressure (psig)	Gas Rate (Mcf/d)





**TRILOBITE  
TESTING, INC.**

# DRILL STEM TEST REPORT

**FLUID SUMMARY**

Strata Expl.Inc.

**6-27s-19w Kiowa Ks.**

P.O.Box 401  
Fairfield Il. 62837

**Rose#1-6**

Job Ticket: 47583

**DST#: 2**

ATTN: Jon Christensen

Test Start: 2012.07.19 @ 14:09:05

## Mud and Cushion Information

Mud Type: Gel Chem

Cushion Type:

Oil API:

deg API

Mud Weight: 9.00 lb/gal

Cushion Length:

ft

Water Salinity:

86000 ppm

Viscosity: 69.00 sec/qt

Cushion Volume:

bbbl

Water Loss: 8.79 in<sup>3</sup>

Gas Cushion Type:

Resistivity: 0.00 ohm.m

Gas Cushion Pressure:

psig

Salinity: 4300.00 ppm

Filter Cake: 0.20 inches

## Recovery Information

Recovery Table

Length ft	Description	Volume bbbl
235.00	SOCMW 1%o 6%m 93%w	1.320
0.00	Rw .075 ohms @84 deg	0.000
155.00	GM&WCO 12%g 24%m 19%w 45%o	2.174
0.00	1100 ft.of GIP	0.000

Total Length: 390.00 ft

Total Volume: 3.494 bbl

Num Fluid Samples: 0

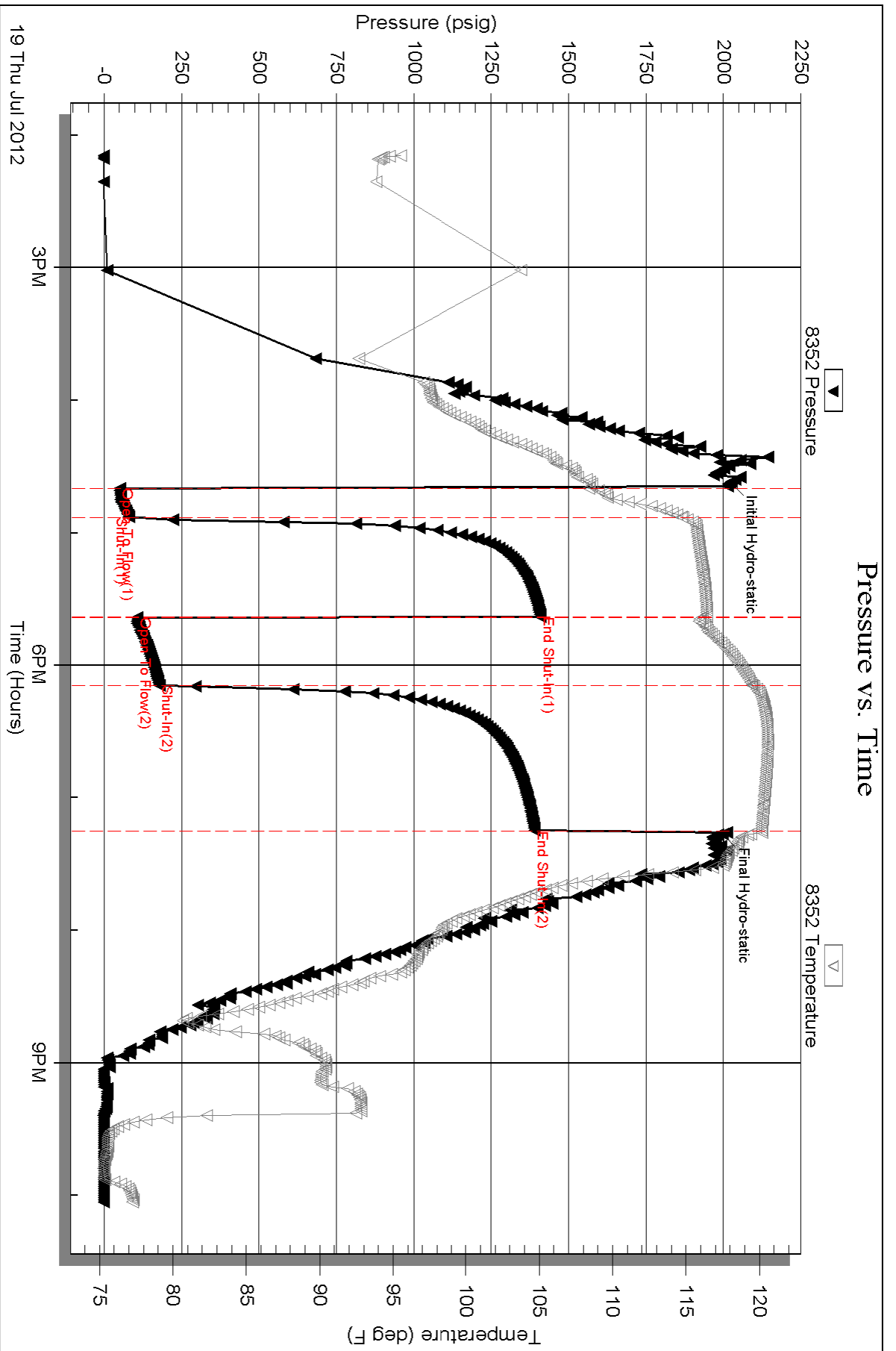
Num Gas Bombs: 0

Serial #: none

Laboratory Name:

Laboratory Location:

Recovery Comments:



Serial #: 8370

Inside

Strata Expl. Inc.

Rose#1-6

DST Test Number: 2

