



TRILOBITE TESTING, INC.

DRILL STEM TEST REPORT

Shakespeare Oil Company, Inc

26-13-34 Logan Co KS

202 W. Main St.
Salem IL
62881
ATTN: Tim Priest

Younklin 1 36

Job Ticket: 49867

DST#: 2

Test Start: 2012.11.06 @ 01:37:15

GENERAL INFORMATION:

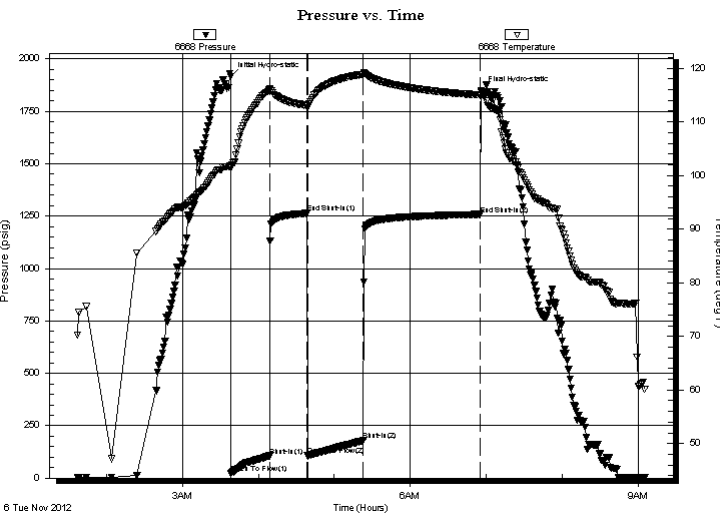
Formation: **H**
 Deviated: No Whipstock: ft (KB)
 Test Type: Conventional Bottom Hole (Reset)
 Time Tool Opened: 03:38:15 Tester: Mike Roberts
 Time Test Ended: 09:06:00 Unit No: 65
 Interval: **3948.00 ft (KB) To 3985.00 ft (KB) (TVD)** Reference Elevations: 2885.00 ft (KB)
 Total Depth: 3985.00 ft (KB) (TVD) 2880.00 ft (CF)
 Hole Diameter: 7.88 inches Hole Condition: Poor KB to GR/CF: 5.00 ft

Serial #: 6668

Inside

Press @ Run Depth: 179.05 psig @ 3949.00 ft (KB) Capacity: 8000.00 psig
 Start Date: 2012.11.06 End Date: 2012.11.06 Last Calib.: 2012.11.07
 Start Time: 01:37:15 End Time: 09:06:00 Time On Btm: 2012.11.06 @ 03:38:00
 Time Off Btm: 2012.11.06 @ 06:56:00

TEST COMMENT: IF:BOB in 26 min.
 IS:No return blow
 FF:BOB in 28 min.
 FS:No return blow



PRESSURE SUMMARY

Time (Min.)	Pressure (psig)	Temp (deg F)	Annotation
0	1916.45	101.83	Initial Hydro-static
1	22.62	101.35	Open To Flow (1)
31	106.12	115.94	Shut-In(1)
61	1263.66	113.03	End Shut-In(1)
61	107.24	112.65	Open To Flow (2)
105	179.05	118.85	Shut-In(2)
198	1258.63	115.00	End Shut-In(2)
198	1848.07	114.91	Final Hydro-static

Recovery

Length (ft)	Description	Volume (bbl)
369.00	sw 100% sw	4.07

* Recovery from multiple tests

Gas Rates

Choke (inches)	Pressure (psig)	Gas Rate (Mcf/d)



**TRILOBITE
TESTING, INC.**

DRILL STEM TEST REPORT

FLUID SUMMARY

Shakespeare Oil Company, Inc

26-13-34 Logan Co KS

202 W. Main St.
Salem IL
62881

Younklin 1 36

Job Ticket: 49867

DST#: 2

ATTN: Tim Priest

Test Start: 2012.11.06 @ 01:37:15

Mud and Cushion Information

Mud Type: Gel Chem

Cushion Type:

Oil API:

0 deg API

Mud Weight: 9.00 lb/gal

Cushion Length:

ft

Water Salinity:

33000 ppm

Viscosity: 48.00 sec/qt

Cushion Volume:

bbbl

Water Loss: 7.19 in³

Gas Cushion Type:

Resistivity: 0.00 ohm.m

Gas Cushion Pressure:

psig

Salinity: 4000.00 ppm

Filter Cake: 1.00 inches

Recovery Information

Recovery Table

Length ft	Description	Volume bbl
369.00	sw 100% sw	4.074

Total Length: 369.00 ft Total Volume: 4.074 bbl

Num Fluid Samples: 0

Num Gas Bombs: 0

Serial #:

Laboratory Name:

Laboratory Location:

Recovery Comments: RW=.329@54.2=33,000 ppm

Serial #: 6668

Inside

Shakespeare Oil Company, Inc

Younkin 1 36

DST Test Number: 2

Pressure vs. Time

