



**TRILOBITE
TESTING, INC.**

DRILL STEM TEST REPORT

Shakespeare Oil Company, Inc

26-13-34 Logan Co KS

202 W. Main St.
Salem IL
62881
ATTN: Tim Priest

Younklin 1 36

Job Ticket: 49868

DST#: 3

Test Start: 2012.11.07 @ 19:23:15

GENERAL INFORMATION:

Formation: **I**
 Deviated: **No** Whipstock: **ft (KB)** Test Type: **Conventional Bottom Hole (Reset)**
 Time Tool Opened: **21:20:00** Tester: **Mike Roberts**
 Time Test Ended: **01:03:15** Unit No: **65**
Interval: 3982.00 ft (KB) To 4015.00 ft (KB) (TVD) Reference Elevations: **2885.00 ft (KB)**
 Total Depth: **4015.00 ft (KB) (TVD)** **2880.00 ft (CF)**
 Hole Diameter: **7.88 inches** Hole Condition: **Poor** KB to GR/CF: **5.00 ft**

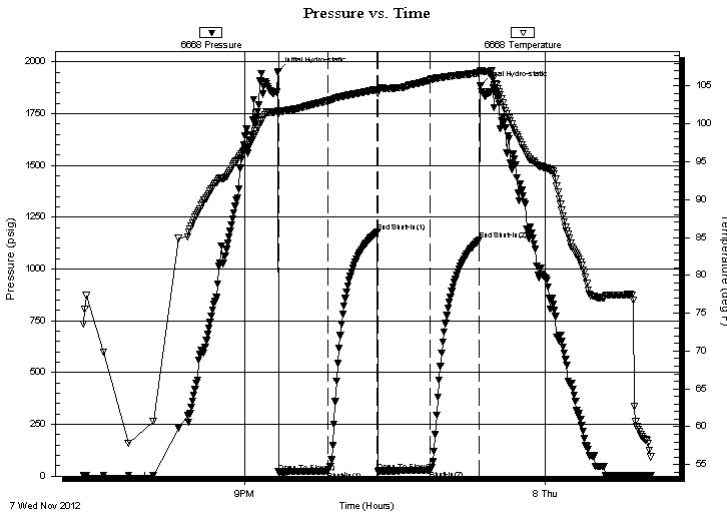
Serial #: 6668

Inside

Press @ Run Depth: **27.88 psig @ 3983.00 ft (KB)** Capacity: **8000.00 psig**
 Start Date: **2012.11.07** End Date: **2012.11.08** Last Calib.: **2012.11.08**
 Start Time: **19:23:15** End Time: **01:03:15** Time On Btm: **2012.11.07 @ 21:19:45**
 Time Off Btm: **2012.11.07 @ 23:21:00**

TEST COMMENT: IF:Weak surface blow died in 18 min.
 IS:No return blow
 FF:No blow
 FS:No return blow

PRESSURE SUMMARY



Time (Min.)	Pressure (psig)	Temp (deg F)	Annotation
0	1954.07	101.80	Initial Hydro-static
1	20.29	101.35	Open To Flow (1)
30	23.92	103.03	Shut-In(1)
60	1177.75	104.54	End Shut-In(1)
60	24.64	104.02	Open To Flow (2)
91	27.88	105.81	Shut-In(2)
121	1139.38	106.72	End Shut-In(2)
122	1883.81	107.05	Final Hydro-static

Recovery

Length (ft)	Description	Volume (bbl)
5.00	mud 100% m	0.02

* Recovery from multiple tests

Gas Rates

Choke (inches)	Pressure (psig)	Gas Rate (Mcf/d)



**TRILOBITE
TESTING, INC.**

DRILL STEM TEST REPORT

FLUID SUMMARY

Shakespeare Oil Company, Inc

26-13-34 Logan Co KS

202 W. Main St.
Salem IL
62881

Younkin 1 36

Job Ticket: 49868

DST#: 3

ATTN: Tim Priest

Test Start: 2012.11.07 @ 19:23:15

Mud and Cushion Information

Mud Type: Gel Chem

Cushion Type:

Oil API:

0 deg API

Mud Weight: 9.00 lb/gal

Cushion Length:

ft

Water Salinity:

0 ppm

Viscosity: 58.00 sec/qt

Cushion Volume:

bbbl

Water Loss: 6.39 in³

Gas Cushion Type:

Resistivity: 0.00 ohm.m

Gas Cushion Pressure:

psig

Salinity: 5400.00 ppm

Filter Cake: 1.00 inches

Recovery Information

Recovery Table

Length ft	Description	Volume bbbl
5.00	mud 100% m	0.025

Total Length: 5.00 ft Total Volume: 0.025 bbl

Num Fluid Samples: 0

Num Gas Bombs: 0

Serial #:

Laboratory Name:

Laboratory Location:

Recovery Comments:

Serial #: 6668

Inside

Shakespeare Oil Company, Inc

Younkin 1 36

DST Test Number: 3

