



TRILOBITE TESTING, INC.

DRILL STEM TEST REPORT

Shakespeare Oil Company, Inc
 202 W. Main St.
 Salem IL
 62881
 ATTN: Tim Priest

26-13-34 Logan Co KS

Younklin 1 36

Job Ticket: 49870

DST#: 5

Test Start: 2012.11.08 @ 22:35:15

GENERAL INFORMATION:

Formation: **K**
 Deviated: No Whipstock: ft (KB)
 Time Tool Opened: 00:35:30
 Time Test Ended: 04:57:15
 Interval: **4037.00 ft (KB) To 4060.00 ft (KB) (TVD)**
 Total Depth: 4060.00 ft (KB) (TVD)
 Hole Diameter: 7.88 inches Hole Condition: Poor
 Test Type: Conventional Bottom Hole (Reset)
 Tester: Mike Roberts
 Unit No: 65
 Reference Elevations: 2885.00 ft (KB)
 2880.00 ft (CF)
 KB to GR/CF: 5.00 ft

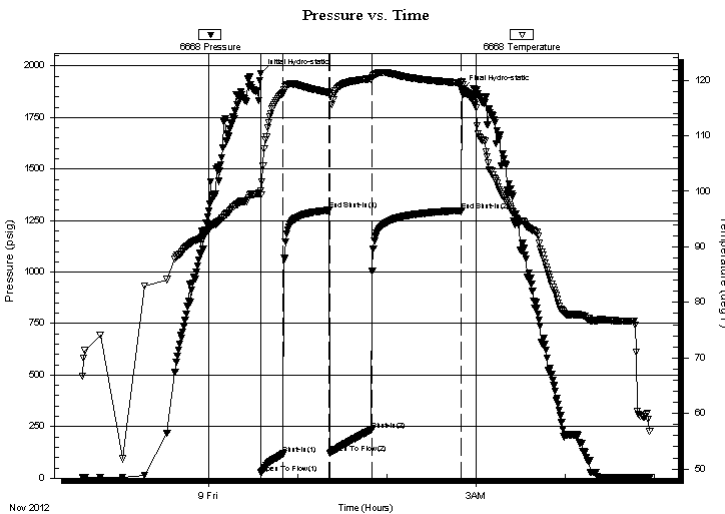
Serial #: 6668

Inside

Press @ Run Depth: 234.62 psig @ 4038.00 ft (KB)
 Start Date: 2012.11.08 End Date: 2012.11.09
 Start Time: 22:35:15 End Time: 04:57:15
 Capacity: 8000.00 psig
 Last Calib.: 2012.11.09
 Time On Btm: 2012.11.09 @ 00:35:15
 Time Off Btm: 2012.11.09 @ 02:50:30

TEST COMMENT: IF:BOB in 10 min
 IS:No return blow
 FF:BOB in 11 min
 FS:No return blow

PRESSURE SUMMARY



Time (Min.)	Pressure (psig)	Temp (deg F)	Annotation
0	1964.78	100.04	Initial Hydro-static
1	25.14	99.31	Open To Flow (1)
15	117.71	117.65	Shut-In(1)
46	1300.55	117.77	End Shut-In(1)
47	121.14	117.19	Open To Flow (2)
75	234.62	120.23	Shut-In(2)
135	1298.67	119.50	End Shut-In(2)
136	1887.13	119.69	Final Hydro-static

Recovery

Length (ft)	Description	Volume (bbl)
493.00	sw 100%sw	5.81

* Recovery from multiple tests

Gas Rates

Choke (inches)	Pressure (psig)	Gas Rate (Mcf/d)



**TRILOBITE
TESTING, INC.**

DRILL STEM TEST REPORT

FLUID SUMMARY

Shakespeare Oil Company, Inc

26-13-34 Logan Co KS

202 W. Main St.
Salem IL
62881

Younkin 1 36

Job Ticket: 49870

DST#: 5

ATTN: Tim Priest

Test Start: 2012.11.08 @ 22:35:15

Mud and Cushion Information

Mud Type: Gel Chem

Cushion Type:

Oil API:

0 deg API

Mud Weight: 9.00 lb/gal

Cushion Length:

ft

Water Salinity:

33500 ppm

Viscosity: 54.00 sec/qt

Cushion Volume:

bbbl

Water Loss: 7.19 in³

Gas Cushion Type:

Resistivity: 0.00 ohm.m

Gas Cushion Pressure:

psig

Salinity: 4400.00 ppm

Filter Cake: 1.00 inches

Recovery Information

Recovery Table

Length ft	Description	Volume bbl
493.00	sw 100%sw	5.813

Total Length: 493.00 ft Total Volume: 5.813 bbl

Num Fluid Samples: 0

Num Gas Bombs: 0

Serial #:

Laboratory Name:

Laboratory Location:

Recovery Comments: RW= 43.2 @ 37.8*= 33,500 ppm

Pressure vs. Time

