



DRILL STEM TEST REPORT

Prepared For: **Bach Oil Production**

PO BOX 723
Alma, NE 68290

ATTN: Bob Peterson

Krafft #1

11-1s-19w Phillips,KS

Start Date: 2012.09.14 @ 00:16:00

End Date: 2012.09.14 @ 06:39:15

Job Ticket #: 48063 DST #: 1

Trilobite Testing, Inc
PO Box 362 Hays, KS 67601
ph: 785-625-4778 fax: 785-625-5620

Printed: 2012.09.21 @ 09:12:57



**TRILOBITE
TESTING, INC.**

DRILL STEM TEST REPORT

Bach Oil Production

11-1s-19w Phillips,KS

PO BOX 723
Alma, NE 68290

Krafft #1

Job Ticket: 48063

DST#: 1

ATTN: Bob Peterson

Test Start: 2012.09.14 @ 00:16:00

GENERAL INFORMATION:

Formation: **LKC "A-D"**

Deviated: No Whipstock: ft (KB)

Time Tool Opened: 01:52:45

Time Test Ended: 06:39:15

Test Type: Conventional Bottom Hole (Initial)

Tester: Kevin Mack

Unit No: 43

Interval: 3359.00 ft (KB) To 3433.00 ft (KB) (TVD)

Reference Elevations: 2123.00 ft (KB)

Total Depth: 3433.00 ft (KB) (TVD)

2118.00 ft (CF)

Hole Diameter: 7.88 inches Hole Condition: Good

KB to GR/CF: 5.00 ft

Serial #: 8648

Inside

Press @ Run Depth: 36.28 psig @ 3360.00 ft (KB)

Capacity: 8000.00 psig

Start Date: 2012.09.14

End Date:

2012.09.14

Last Calib.: 2012.09.14

Start Time: 00:16:05

End Time:

06:39:14

Time On Btm: 2012.09.14 @ 01:52:00

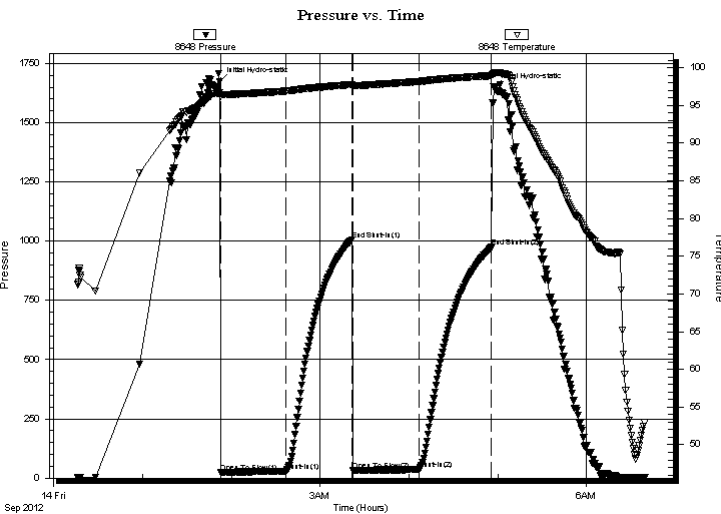
Time Off Btm: 2012.09.14 @ 04:57:15

TEST COMMENT: 45 - IF- 1/8" Blow built to 1"

45 - IS- No Return

45 - FF- No Blow

45 - FS- No Return



PRESSURE SUMMARY

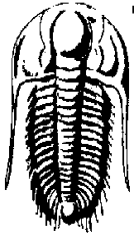
Time (Min.)	Pressure (psig)	Temp (deg F)	Annotation
0	1673.12	96.67	Initial Hydro-static
1	23.38	96.24	Open To Flow (1)
45	28.84	96.90	Shut-In(1)
90	1006.07	97.76	End Shut-In(1)
90	32.03	97.55	Open To Flow (2)
135	36.28	98.17	Shut-In(2)
184	974.18	98.94	End Shut-In(2)
186	1649.95	99.20	Final Hydro-static

Recovery

Length (ft)	Description	Volume (bbl)
15.00	Mud 100M	0.07

Gas Rates

	Choke (inches)	Pressure (psig)	Gas Rate (Mcf/d)



TRILOBITE
TESTING, INC.

DRILL STEM TEST REPORT

Bach Oil Production

11-1s-19w Phillips,KS

PO BOX 723
Alma, NE 68290

Krafft #1

Job Ticket: 48063

DST#: 1

ATTN: Bob Peterson

Test Start: 2012.09.14 @ 00:16:00

GENERAL INFORMATION:

Formation: **LKC "A-D"**

Deviated: **No Whipstock:** ft (KB)

Time Tool Opened: 01:52:45

Time Test Ended: 06:39:15

Test Type: **Conventional Bottom Hole (Initial)**

Tester: **Kevin Mack**

Unit No: **43**

Interval: 3359.00 ft (KB) To 3433.00 ft (KB) (TVD)

Reference Elevations: **2123.00 ft (KB)**

Total Depth: **3433.00 ft (KB) (TVD)**

2118.00 ft (CF)

Hole Diameter: **7.88 inches** Hole Condition: **Good**

KB to GR/CF: **5.00 ft**

Serial #: 6799

Inside

Press @ Run Depth: psig @ **3360.00 ft (KB)**

Capacity: **8000.00 psig**

Start Date: **2012.09.14**

End Date: **2012.09.14**

Last Calib.: **1899.12.30**

Start Time: **00:16:05**

End Time: **06:40:44**

Time On Btm:

Time Off Btm:

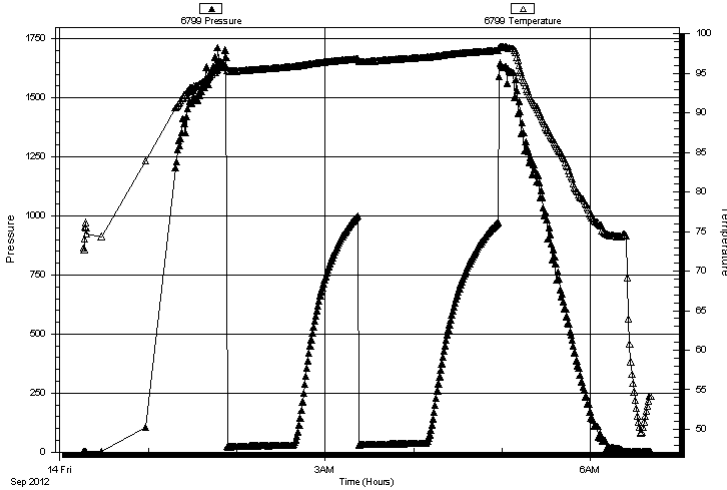
TEST COMMENT: 45 - IF- 1/8" Blow built to 1"

45 - IS- No Return

45 - FF- No Blow

45 - FS- No Return

Pressure vs. Time



PRESSURE SUMMARY

Time (Min.)	Pressure (psig)	Temp (deg F)	Annotation

Recovery

Length (ft)	Description	Volume (bbl)
15.00	Mud 100M	0.07

Gas Rates

	Choke (inches)	Pressure (psig)	Gas Rate (Mcf/d)



**TRILOBITE
TESTING, INC.**

DRILL STEM TEST REPORT

TOOL DIAGRAM

Bach Oil Production

11-1s-19w Phillips,KS

PO BOX 723
Alma, NE 68290

Krafft #1

Job Ticket: 48063

DST#: 1

ATTN: Bob Peterson

Test Start: 2012.09.14 @ 00:16:00

Tool Information

Drill Pipe:	Length: 3154.00 ft	Diameter: 3.80 inches	Volume: 44.24 bbl	Tool Weight: 2500.00 lb
Heavy Wt. Pipe:	Length: 0.00 ft	Diameter: 0.00 inches	Volume: 0.00 bbl	Weight set on Packer: 25000.00 lb
Drill Collar:	Length: 186.00 ft	Diameter: 2.25 inches	Volume: 0.91 bbl	Weight to Pull Loose: 52000.00 lb
			<u>Total Volume: 45.15 bbl</u>	Tool Chased ft
Drill Pipe Above KB:	10.00 ft			String Weight: Initial 50000.00 lb
Depth to Top Packer:	3359.00 ft			Final 50000.00 lb
Depth to Bottom Packer:	ft			
Interval between Packers:	74.00 ft			
Tool Length:	103.00 ft			
Number of Packers:	2	Diameter: 6.75 inches		

Tool Comments:

Tool Description

Tool Description	Length (ft)	Serial No.	Position	Depth (ft)	Accum. Lengths
Change Over Sub	1.00			3331.00	
Shut In Tool	5.00			3336.00	
Hydraulic tool	5.00			3341.00	
Jars	5.00			3346.00	
Safety Joint	3.00			3349.00	
Packer	5.00			3354.00	29.00 Bottom Of Top Packer
Packer	5.00			3359.00	
Stubb	1.00			3360.00	
Recorder	0.00	8648	Inside	3360.00	
Recorder	0.00	6799	Inside	3360.00	
Perforations	3.00			3363.00	
Change Over Sub	1.00			3364.00	
Drill Pipe	63.00			3427.00	
Change Over Sub	1.00			3428.00	
Bullnose	5.00			3433.00	74.00 Bottom Packers & Anchor

Total Tool Length: 103.00



**TRILOBITE
TESTING, INC.**

DRILL STEM TEST REPORT

FLUID SUMMARY

Bach Oil Production

11-1s-19w Phillips,KS

PO BOX 723
Alma, NE 68290

Krafft #1

Job Ticket: 48063

DST#: 1

ATTN: Bob Peterson

Test Start: 2012.09.14 @ 00:16:00

Mud and Cushion Information

Mud Type: Gel Chem

Cushion Type:

Oil API:

deg API

Mud Weight: 9.00 lb/gal

Cushion Length:

ft

Water Salinity:

ppm

Viscosity: 60.00 sec/qt

Cushion Volume:

bbbl

Water Loss: 7.59 in³

Gas Cushion Type:

Resistivity: 0.00 ohm.m

Gas Cushion Pressure:

psig

Salinity: 800.00 ppm

Filter Cake: 1.00 inches

Recovery Information

Recovery Table

Length ft	Description	Volume bbl
15.00	Mud 100M	0.074

Total Length: 15.00 ft Total Volume: 0.074 bbl

Num Fluid Samples: 0

Num Gas Bombs: 0

Serial #:

Laboratory Name:

Laboratory Location:

Recovery Comments:

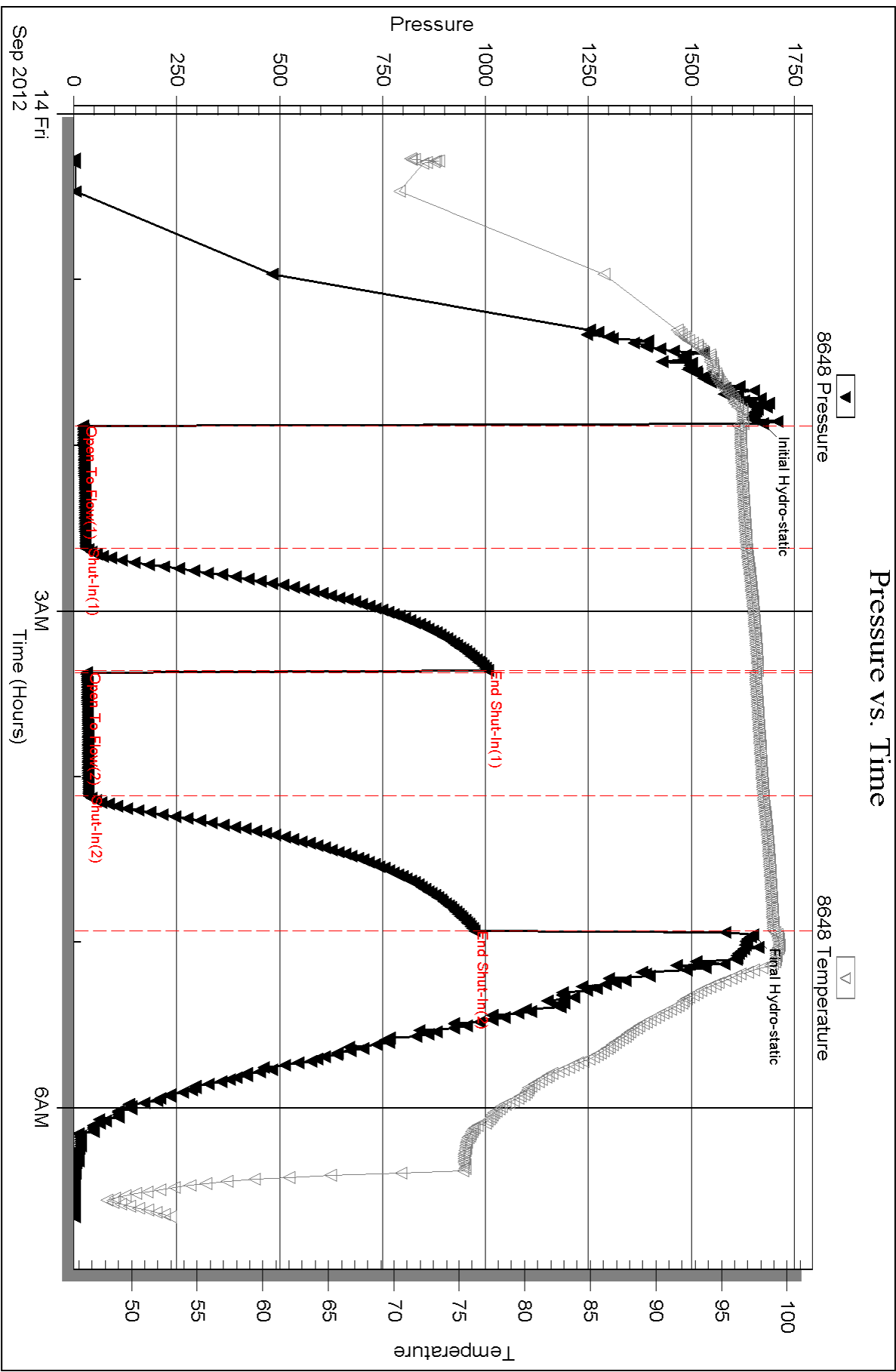
Serial #: 8648

Inside

Bach Oil Production

Krafft #1

DST Test Number: 1



Triobite Testing, Inc

Ref. No: 48063

Printed: 2012.09.21 @ 09:13:01

Serial #: 6799

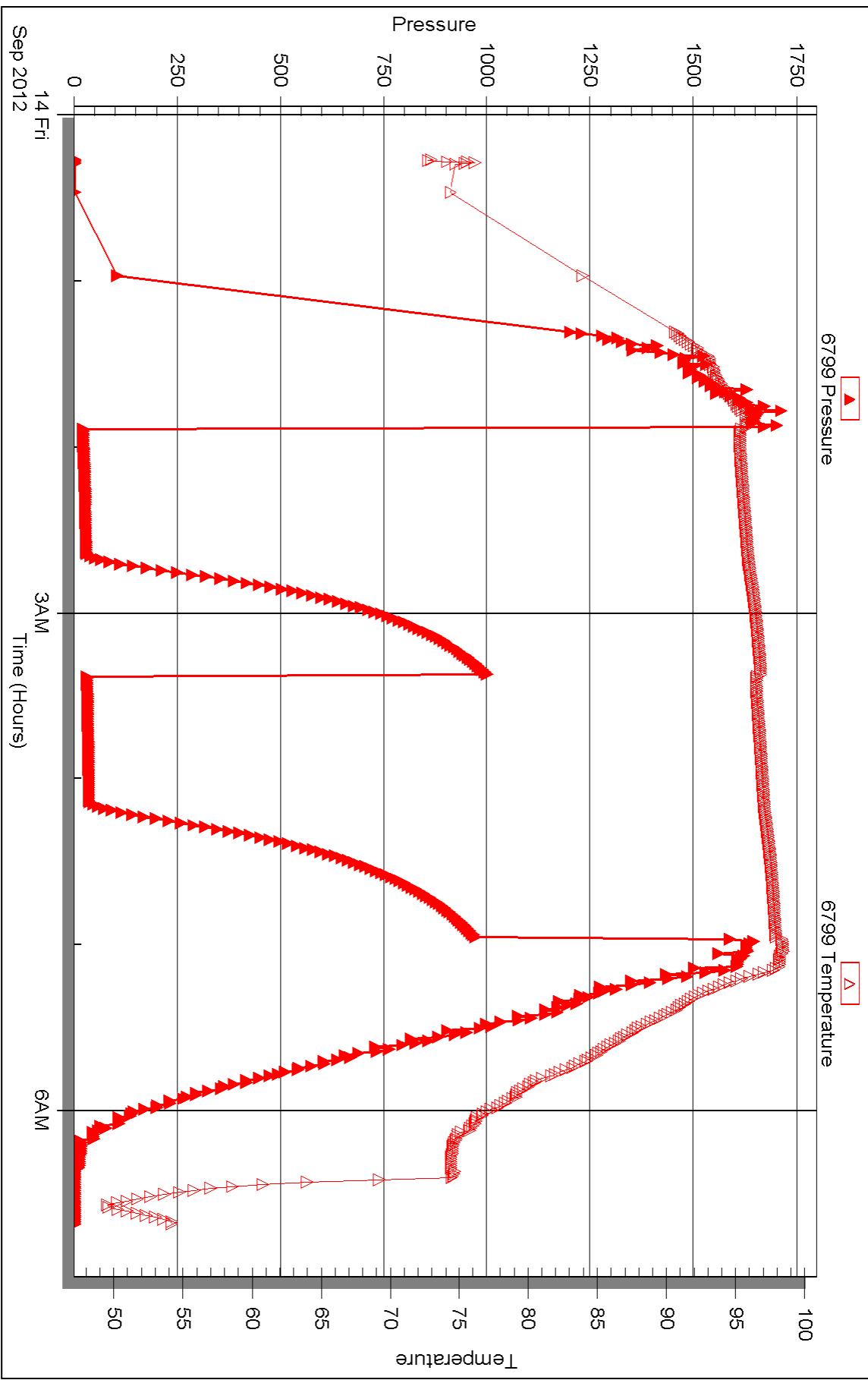
Inside

Bach Oil Production

Kraft #1

DST Test Number: 1

Pressure vs. Time





DRILL STEM TEST REPORT

Prepared For: **Bach Oil Production**

PO BOX 723
Alma, NE 68290

ATTN: Bob Peterson

Krafft #1

11-1s-19w Phillips,KS

Start Date: 2012.09.14 @ 13:51:00

End Date: 2012.09.14 @ 20:33:15

Job Ticket #: 48064 DST #: 2

Trilobite Testing, Inc
PO Box 362 Hays, KS 67601
ph: 785-625-4778 fax: 785-625-5620

Printed: 2012.09.21 @ 09:10:26



**TRILOBITE
TESTING, INC.**

DRILL STEM TEST REPORT

Bach Oil Production

11-1s-19w Phillips,KS

PO BOX 723
Alma, NE 68290

Krafft #1

Job Ticket: 48064

DST#: 2

ATTN: Bob Peterson

Test Start: 2012.09.14 @ 13:51:00

GENERAL INFORMATION:

Formation: **LKC "F-G"**

Deviated: No Whipstock: ft (KB)

Time Tool Opened: 15:48:00

Time Test Ended: 20:33:15

Test Type: Conventional Bottom Hole (Initial)

Tester: Kevin Mack

Unit No: 43

Interval: 3429.00 ft (KB) To 3475.00 ft (KB) (TVD)

Reference Elevations: 2123.00 ft (KB)

Total Depth: 3475.00 ft (KB) (TVD)

2118.00 ft (CF)

Hole Diameter: 7.88 inches Hole Condition: Good

KB to GR/CF: 5.00 ft

Serial #: 6799

Inside

Press @ Run Depth: 71.25 psig @ 3430.00 ft (KB)

Capacity: 8000.00 psig

Start Date: 2012.09.14

End Date:

2012.09.14

Last Calib.:

2012.09.14

Start Time: 13:51:05

End Time:

20:33:14

Time On Btm:

2012.09.14 @ 15:46:30

Time Off Btm:

2012.09.14 @ 19:03:45

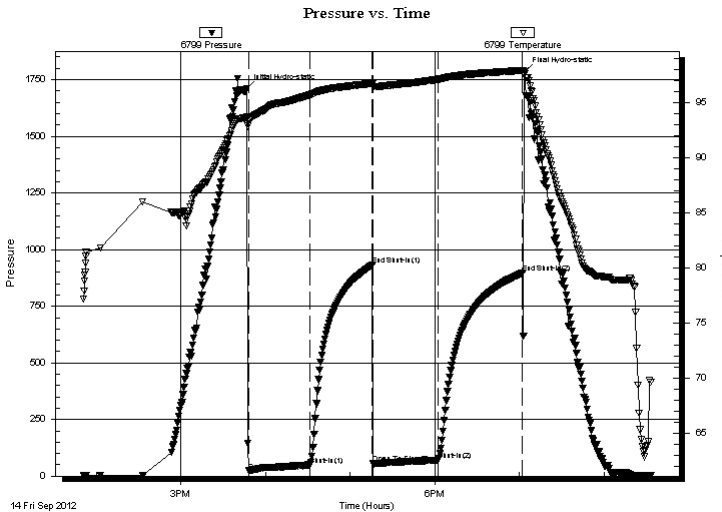
TEST COMMENT: 45 - IF- 1/8" Blow built to 3"

45 - IS- No Return

45 - FF- Weak Surface Blow started at 7 min. Built to 1 1/4"

60 - FS- No Return

PRESSURE SUMMARY



Time (Min.)	Pressure (psig)	Temp (deg F)	Annotation
0	1711.40	93.71	Initial Hydro-static
2	23.16	93.37	Open To Flow (1)
45	49.76	95.67	Shut-In(1)
90	930.97	96.69	End Shut-In(1)
90	55.71	96.45	Open To Flow (2)
136	71.25	97.07	Shut-In(2)
196	896.34	97.89	End Shut-In(2)
198	1786.82	97.58	Final Hydro-static

Recovery

Length (ft)	Description	Volume (bbl)
60.00	OSWM 50W 50M (oil spots)	0.30
10.00	OCM 2o 98M	0.05
0.00	Show of free oil in tool	0.00

Gas Rates

	Choke (inches)	Pressure (psig)	Gas Rate (Mcf/d)



**TRILOBITE
TESTING, INC.**

DRILL STEM TEST REPORT

Bach Oil Production

PO BOX 723
Alma, NE 68290

ATTN: Bob Peterson

11-1s-19w Phillips,KS

Krafft #1

Job Ticket: 48064

DST#: 2

Test Start: 2012.09.14 @ 13:51:00

GENERAL INFORMATION:

Formation: **LKC "F-G"**

Deviated: No Whipstock: ft (KB)

Time Tool Opened: 15:48:00

Time Test Ended: 20:33:15

Test Type: Conventional Bottom Hole (Initial)

Tester: Kevin Mack

Unit No: 43

Interval: 3429.00 ft (KB) To 3475.00 ft (KB) (TVD)

Reference Elevations: 2123.00 ft (KB)

Total Depth: 3475.00 ft (KB) (TVD)

2118.00 ft (CF)

Hole Diameter: 7.88 inches Hole Condition: Good

KB to GR/CF: 5.00 ft

Serial #: 8648 **Inside**

Press @ Run Depth: psig @ 3430.00 ft (KB)

Capacity: 8000.00 psig

Start Date: 2012.09.14

End Date: 2012.09.14

Last Calib.: 2012.09.14

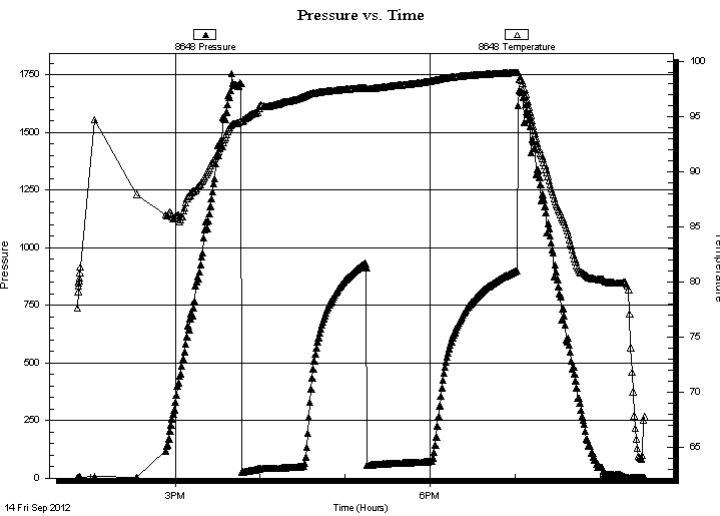
Start Time: 13:51:05

End Time: 20:31:29

Time On Btm:

Time Off Btm:

TEST COMMENT:
45 - IF- 1/8" Blow built to 3"
45 - IS- No Return
45 - FF- Weak Surface Blow started at 7 min. Built to 1 1/4"
60 - FS- No Return



PRESSURE SUMMARY

Time (Min.)	Pressure (psig)	Temp (deg F)	Annotation

Recovery

Length (ft)	Description	Volume (bbl)
60.00	OSWM 50W 50M (oil spots)	0.30
10.00	OCM 2o 98M	0.05
0.00	Show of free oil in tool	0.00

Gas Rates

	Choke (inches)	Pressure (psig)	Gas Rate (Mcf/d)



**TRILOBITE
TESTING, INC.**

DRILL STEM TEST REPORT

TOOL DIAGRAM

Bach Oil Production

11-1s-19w Phillips,KS

PO BOX 723
Alma, NE 68290

Krafft #1

Job Ticket: 48064

DST#: 2

ATTN: Bob Peterson

Test Start: 2012.09.14 @ 13:51:00

Tool Information

Drill Pipe:	Length: 3220.00 ft	Diameter: 3.80 inches	Volume: 45.17 bbl	Tool Weight: 2500.00 lb
Heavy Wt. Pipe:	Length: 0.00 ft	Diameter: 0.00 inches	Volume: 0.00 bbl	Weight set on Packer: 25000.00 lb
Drill Collar:	Length: 186.00 ft	Diameter: 2.25 inches	Volume: 0.91 bbl	Weight to Pull Loose: 54000.00 lb
			<u>Total Volume: 46.08 bbl</u>	Tool Chased ft
Drill Pipe Above KB:	6.00 ft			String Weight: Initial 50000.00 lb
Depth to Top Packer:	3429.00 ft			Final 50000.00 lb
Depth to Bottom Packer:	ft			
Interval between Packers:	46.00 ft			
Tool Length:	75.00 ft			
Number of Packers:	2	Diameter: 6.75 inches		

Tool Comments:

Tool Description	Length (ft)	Serial No.	Position	Depth (ft)	Accum. Lengths
------------------	-------------	------------	----------	------------	----------------

Change Over Sub	1.00			3401.00	
Shut In Tool	5.00			3406.00	
Hydraulic tool	5.00			3411.00	
Jars	5.00			3416.00	
Safety Joint	3.00			3419.00	
Packer	5.00			3424.00	29.00 Bottom Of Top Packer
Packer	5.00			3429.00	
Stubb	1.00			3430.00	
Recorder	0.00	8648	Inside	3430.00	
Recorder	0.00	6799	Inside	3430.00	
Perforations	6.00			3436.00	
Change Over Sub	1.00			3437.00	
Drill Pipe	32.00			3469.00	
Change Over Sub	1.00			3470.00	
Bullnose	5.00			3475.00	46.00 Bottom Packers & Anchor

Total Tool Length: 75.00



**TRILOBITE
TESTING, INC.**

DRILL STEM TEST REPORT

FLUID SUMMARY

Bach Oil Production

11-1s-19w Phillips,KS

PO BOX 723
Alma, NE 68290

Krafft #1

Job Ticket: 48064

DST#: 2

ATTN: Bob Peterson

Test Start: 2012.09.14 @ 13:51:00

Mud and Cushion Information

Mud Type: Gel Chem

Cushion Type:

Oil API:

deg API

Mud Weight: 9.00 lb/gal

Cushion Length:

ft

Water Salinity:

ppm

Viscosity: 60.00 sec/qt

Cushion Volume:

bbbl

Water Loss: 7.99 in³

Gas Cushion Type:

Resistivity: 0.00 ohm.m

Gas Cushion Pressure:

psig

Salinity: 1000.00 ppm

Filter Cake: 1.00 inches

Recovery Information

Recovery Table

Length ft	Description	Volume bbl
60.00	OSWM 50W 50M (oil spots)	0.295
10.00	OCM 2o 98M	0.049
0.00	Show of free oil in tool	0.000

Total Length: 70.00 ft Total Volume: 0.344 bbl

Num Fluid Samples: 0

Num Gas Bombs: 0

Serial #:

Laboratory Name:

Laboratory Location:

Recovery Comments:

Serial #: 6799

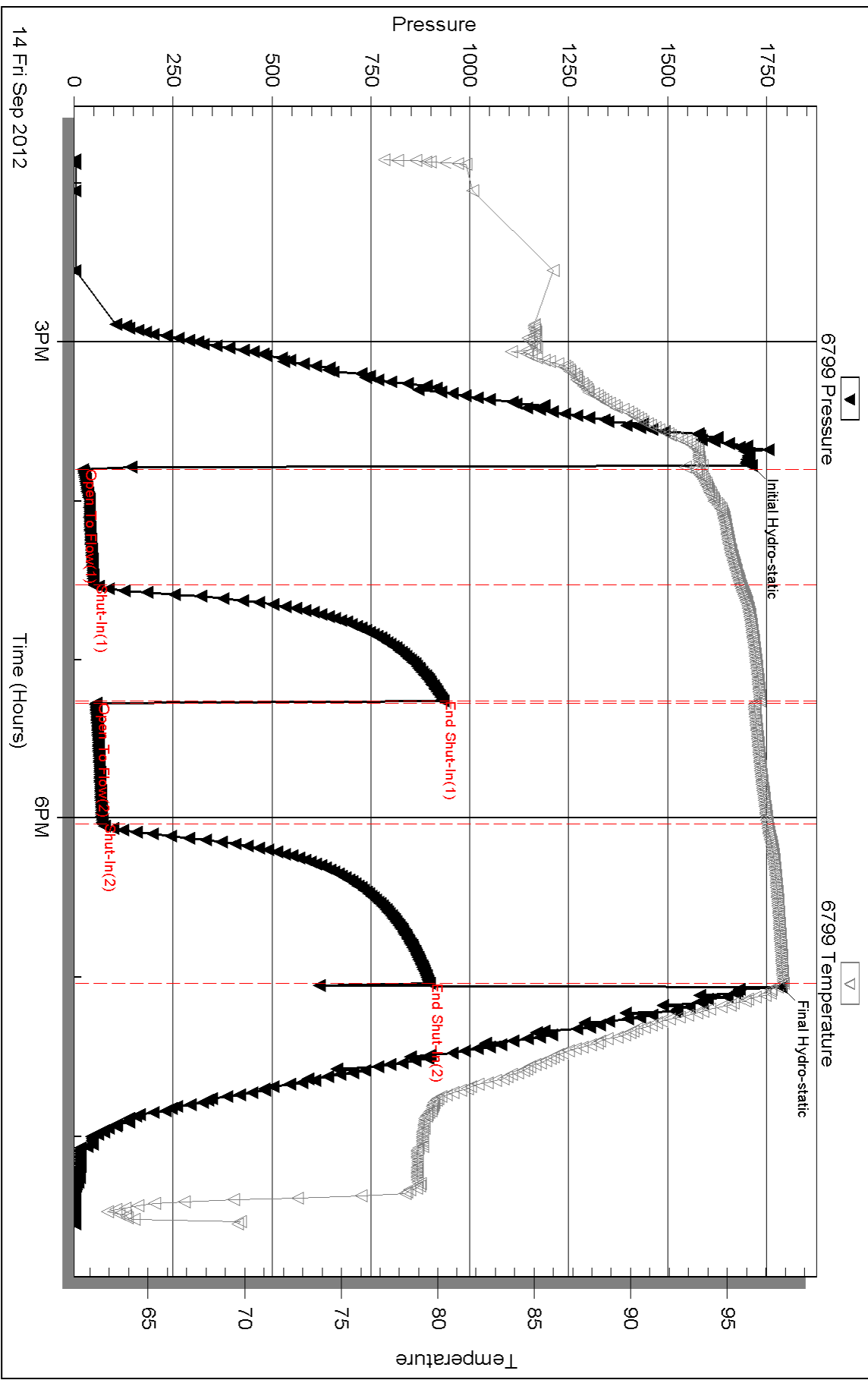
Inside

Bach Oil Production

Kraft #1

DST Test Number: 2

Pressure vs. Time



Triobite Testing, Inc

Ref. No: 48064

Printed: 2012.09.21 @ 09:10:31

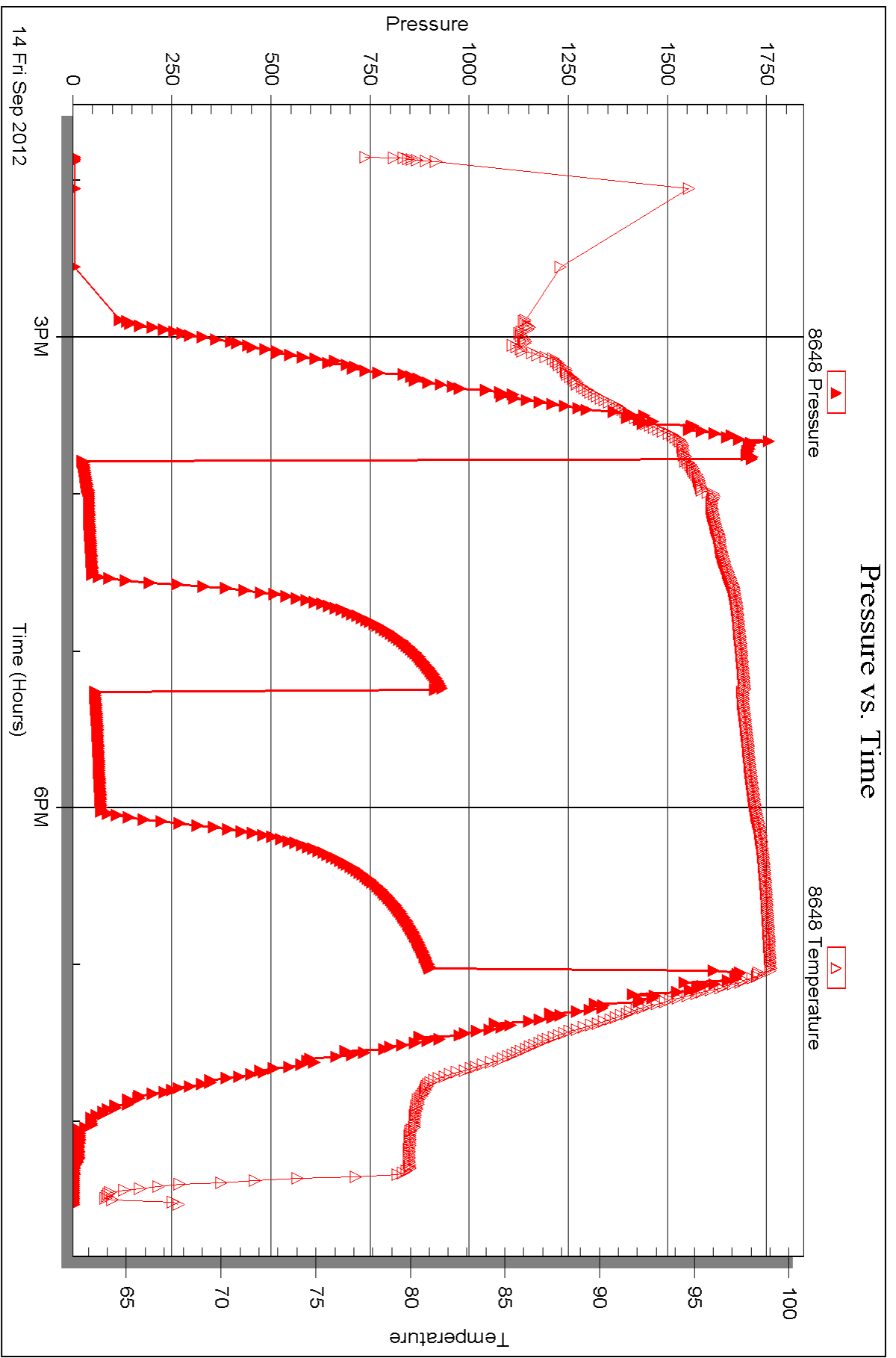
Serial #: 8648

Inside

Bach Oil Production

Krafft #1

DST Test Number: 2



Triobite Testing, Inc

Ref. No: 48064

Printed: 2012.09.21 @ 09:10:31



DRILL STEM TEST REPORT

Prepared For: **Bach Oil Production**

PO BOX 723
Alma, NE 68290

ATTN: Bob Peterson

Krafft #1

11-1s-19w Phillips,KS

Start Date: 2012.09.15 @ 05:15:00

End Date: 2012.09.15 @ 12:22:45

Job Ticket #: 48065 DST #: 3

Trilobite Testing, Inc
PO Box 362 Hays, KS 67601
ph: 785-625-4778 fax: 785-625-5620

Printed: 2012.09.21 @ 08:54:06



**TRILOBITE
TESTING, INC.**

DRILL STEM TEST REPORT

Bach Oil Production

11-1s-19w Phillips,KS

PO BOX 723
Alma, NE 68290

Krafft #1

Job Ticket: 48065

DST#: 3

ATTN: Bob Peterson

Test Start: 2012.09.15 @ 05:15:00

GENERAL INFORMATION:

Formation: **LKC "I-J"**

Deviated: No Whipstock: ft (KB)

Time Tool Opened: 07:26:15

Time Test Ended: 12:22:45

Test Type: Conventional Bottom Hole (Initial)

Tester: Kevin Mack

Unit No: 43

Interval: 3510.00 ft (KB) To 3545.00 ft (KB) (TVD)

Reference Elevations: 2123.00 ft (KB)

Total Depth: 3545.00 ft (KB) (TVD)

2118.00 ft (CF)

Hole Diameter: 7.88 inches Hole Condition: Good

KB to GR/CF: 5.00 ft

Serial #: 6799

Inside

Press @ Run Depth: 30.15 psig @ 3511.00 ft (KB)

Capacity: 8000.00 psig

Start Date: 2012.09.15

End Date:

2012.09.15

Last Calib.:

2012.09.15

Start Time:

05:15:05

End Time:

12:22:44

Time On Btm:

2012.09.15 @ 07:25:45

Time Off Btm:

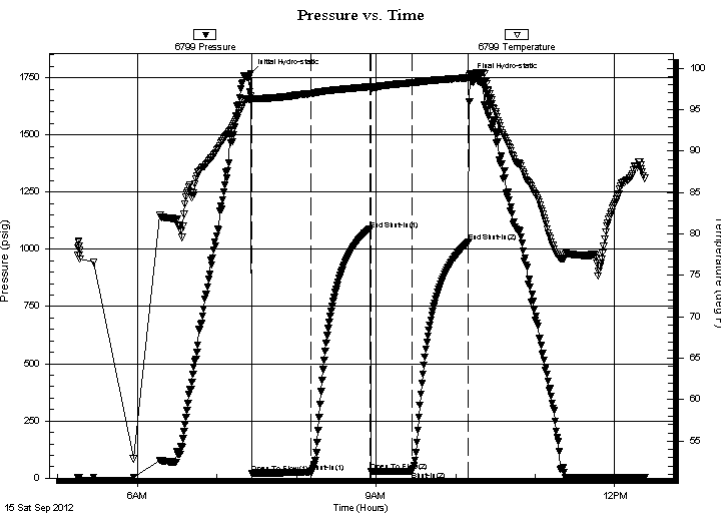
2012.09.15 @ 10:10:45

TEST COMMENT: 45 - IF- Surface Blow built to 1"

45 - IS- No Return

30 - FF- No Blow

45 - FS- No Return



PRESSURE SUMMARY

Time (Min.)	Pressure (psig)	Temp (deg F)	Annotation
0	1769.35	96.65	Initial Hydro-static
1	21.49	96.27	Open To Flow (1)
45	25.94	96.90	Shut-In(1)
90	1086.47	97.76	End Shut-In(1)
91	27.96	97.57	Open To Flow (2)
122	30.15	98.24	Shut-In(2)
164	1032.29	98.84	End Shut-In(2)
165	1751.42	99.24	Final Hydro-static

Recovery

Length (ft)	Description	Volume (bbl)
10.00	OSM 100M (oil spots)	0.05

Gas Rates

Choke (inches)	Pressure (psig)	Gas Rate (Mcf/d)



TRILOBITE TESTING, INC.

DRILL STEM TEST REPORT

Bach Oil Production

11-1s-19w Phillips,KS

PO BOX 723
Alma, NE 68290

Krafft #1

Job Ticket: 48065

DST#: 3

ATTN: Bob Peterson

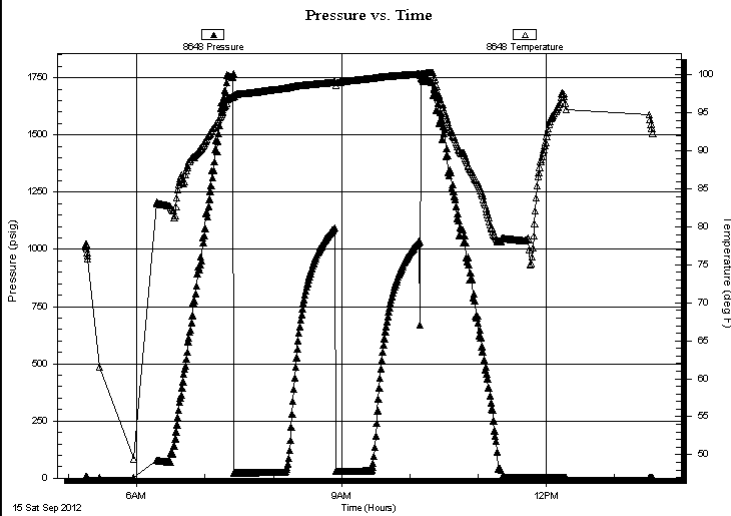
Test Start: 2012.09.15 @ 05:15:00

GENERAL INFORMATION:

Formation: **LKC "I-J"**
 Deviated: No Whipstock: ft (KB)
 Test Type: Conventional Bottom Hole (Initial)
 Time Tool Opened: 07:26:15
 Tester: Kevin Mack
 Time Test Ended: 12:22:45
 Unit No: 43
Interval: 3510.00 ft (KB) To 3545.00 ft (KB) (TVD)
 Reference Elevations: 2123.00 ft (KB)
 Total Depth: 3545.00 ft (KB) (TVD)
 2118.00 ft (CF)
 Hole Diameter: 7.88 inches Hole Condition: Good
 KB to GR/CF: 5.00 ft

Serial #: 8648 **Inside**
 Press @ Run Depth: psig @ 3511.00 ft (KB) Capacity: 8000.00 psig
 Start Date: 2012.09.15 End Date: 2012.09.15 Last Calib.: 2012.09.15
 Start Time: 05:15:05 End Time: 13:33:14 Time On Btm:
 Time Off Btm:

TEST COMMENT: 45 - IF- Surface Blow built to 1"
 45 - IS- No Return
 30 - FF- No Blow
 45 - FS- No Return



PRESSURE SUMMARY

Time (Min.)	Pressure (psig)	Temp (deg F)	Annotation

Recovery

Length (ft)	Description	Volume (bbl)
10.00	OSM 100M (oil spots)	0.05

Gas Rates

	Choke (inches)	Pressure (psig)	Gas Rate (Mcf/d)



**TRILOBITE
TESTING, INC.**

DRILL STEM TEST REPORT

TOOL DIAGRAM

Bach Oil Production

11-1s-19w Phillips,KS

PO BOX 723
Alma, NE 68290

Krafft #1

Job Ticket: 48065

DST#: 3

ATTN: Bob Peterson

Test Start: 2012.09.15 @ 05:15:00

Tool Information

Drill Pipe:	Length: 3315.00 ft	Diameter: 3.80 inches	Volume: 46.50 bbl	Tool Weight:	2500.00 lb
Heavy Wt. Pipe:	Length: 0.00 ft	Diameter: 0.00 inches	Volume: 0.00 bbl	Weight set on Packer:	25000.00 lb
Drill Collar:	Length: 186.00 ft	Diameter: 2.25 inches	Volume: 0.91 bbl	Weight to Pull Loose:	54000.00 lb
			<u>Total Volume: 47.41 bbl</u>	Tool Chased	ft
Drill Pipe Above KB:	20.00 ft			String Weight: Initial	50000.00 lb
Depth to Top Packer:	3510.00 ft			Final	50000.00 lb
Depth to Bottom Packer:	ft				
Interval between Packers:	35.00 ft				
Tool Length:	64.00 ft				
Number of Packers:	2	Diameter: 6.75 inches			
Tool Comments:					

Tool Description	Length (ft)	Serial No.	Position	Depth (ft)	Accum. Lengths
------------------	-------------	------------	----------	------------	----------------

Change Over Sub	1.00			3482.00	
Shut In Tool	5.00			3487.00	
Hydraulic tool	5.00			3492.00	
Jars	5.00			3497.00	
Safety Joint	3.00			3500.00	
Packer	5.00			3505.00	29.00 Bottom Of Top Packer
Packer	5.00			3510.00	
Stubb	1.00			3511.00	
Recorder	0.00	8648	Inside	3511.00	
Recorder	0.00	6799	Inside	3511.00	
Perforations	29.00			3540.00	
Bullnose	5.00			3545.00	35.00 Bottom Packers & Anchor

Total Tool Length: 64.00



**TRILOBITE
TESTING, INC.**

DRILL STEM TEST REPORT

FLUID SUMMARY

Bach Oil Production

11-1s-19w Phillips,KS

PO BOX 723
Alma, NE 68290

Krafft #1

Job Ticket: 48065

DST#: 3

ATTN: Bob Peterson

Test Start: 2012.09.15 @ 05:15:00

Mud and Cushion Information

Mud Type: Gel Chem

Cushion Type:

Oil API:

deg API

Mud Weight: 9.00 lb/gal

Cushion Length:

ft

Water Salinity:

ppm

Viscosity: 60.00 sec/qt

Cushion Volume:

bbbl

Water Loss: 7.99 in³

Gas Cushion Type:

Resistivity: 0.00 ohm.m

Gas Cushion Pressure:

psig

Salinity: 1000.00 ppm

Filter Cake: 1.00 inches

Recovery Information

Recovery Table

Length ft	Description	Volume bbl
10.00	OSM 100M (oil spots)	0.049

Total Length: 10.00 ft Total Volume: 0.049 bbl

Num Fluid Samples: 0

Num Gas Bombs: 0

Serial #:

Laboratory Name:

Laboratory Location:

Recovery Comments:

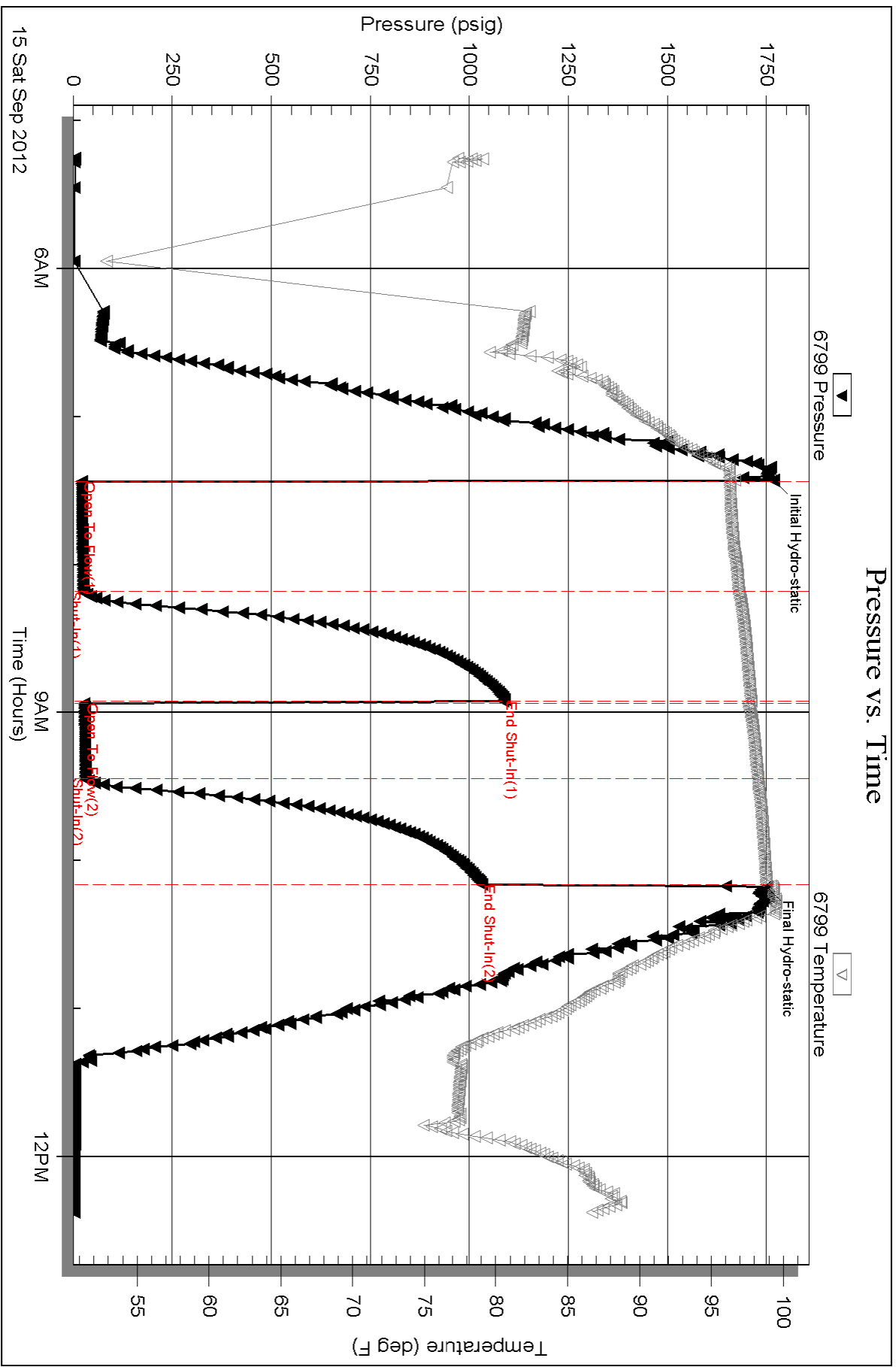
Serial #: 6799

Inside

Bach Oil Production

Kraft #1

DST Test Number: 3



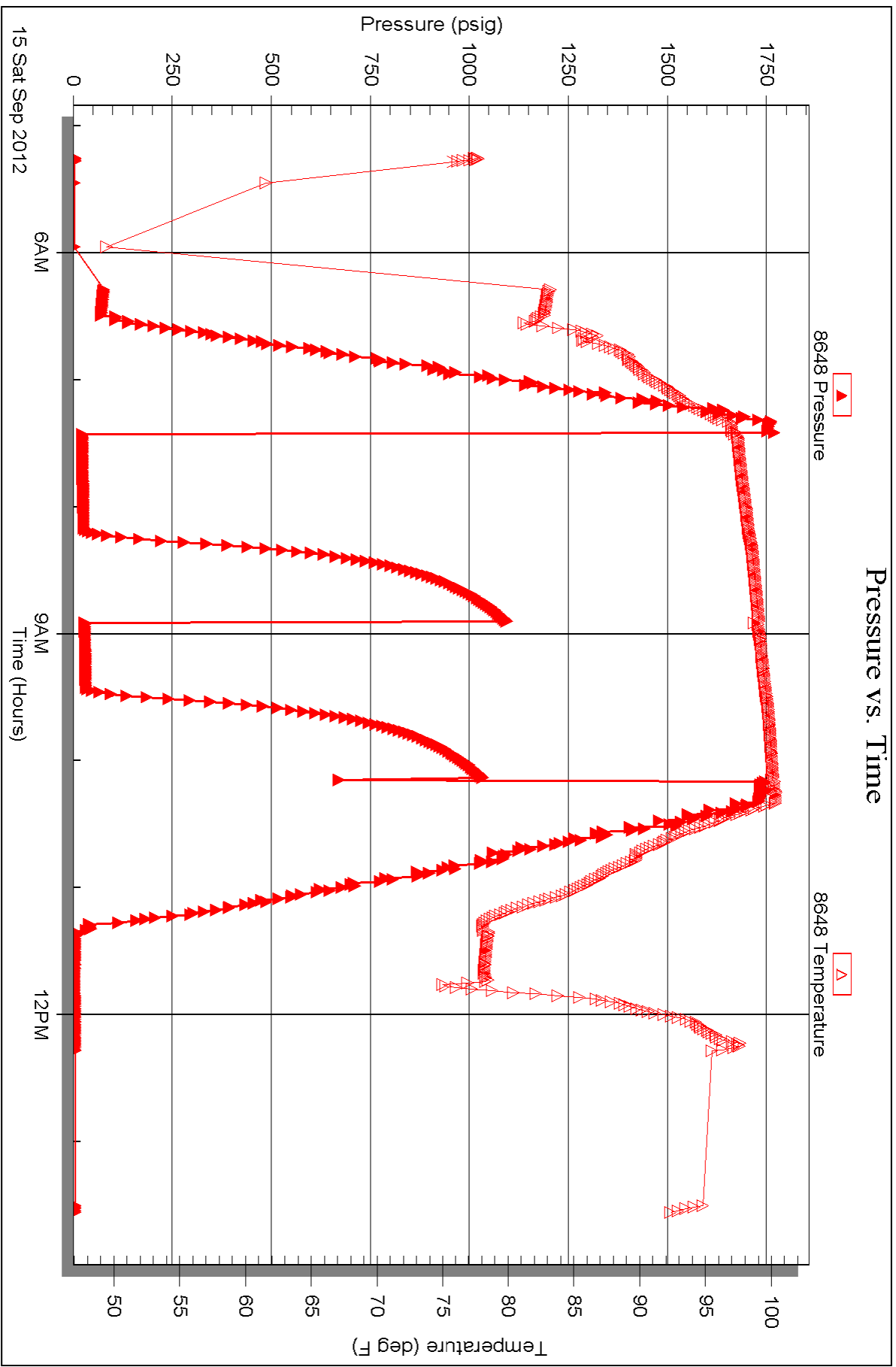
Serial #: 8648

Inside

Bach Oil Production

Krafft #1

DST Test Number: 3





TRILOBITE TESTING INC.

P.O. Box 1733 • Hays, Kansas 67601

Test Ticket

NO. 48063

Well Name & No. Krafft #1 Test No. 1 Date 9-13-12
 Company Bach Oil Production Elevation 2123 KB 2118 GL
 Address PO Box 723 ALMA, NE 68920
 Co. Rep / Geo. Bob Peterson Rig Murfin #8
 Location: Sec. 11 Twp. 1S Rge. 19W Co. Phillips State KS

Interval Tested 3359-3433 Zone Tested LKC "A-C-D"
 Anchor Length 74' Drill Pipe Run 3154 Mud Wt. 8.9
 Top Packer Depth 3355 Drill Collars Run 186 Vis 60
 Bottom Packer Depth 3359 Wt. Pipe Run Ø WL 7.6
 Total Depth 3433 Chlorides 800 ppm System LCM 2#

Blow Description IF - 1/8" Blow built to 1"
IS - No Return
FF - No Blow
FS - No Return

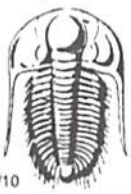
Rec	Feet of	%gas	%oil	%water	%mud
<u>10</u>	<u>Mud</u>			<u>100</u>	
Rec	Feet of	%gas	%oil	%water	%mud
Rec	Feet of	%gas	%oil	%water	%mud
Rec	Feet of	%gas	%oil	%water	%mud

Rec Total 10 BHT 99 Gravity — API RW — @ — ° F Chlorides — ppm

(A) Initial Hydrostatic <u>1673</u>	<input checked="" type="checkbox"/> Test 1150	T-On Location <u>10:30 PM</u>
(B) First Initial Flow <u>23</u>	<input checked="" type="checkbox"/> Jars 250	T-Started <u>12:16 AM</u>
(C) First Final Flow <u>28</u>	<input checked="" type="checkbox"/> Safety Joint 75	T-Open <u>1:53 AM</u>
(D) Initial Shut-In <u>1006</u>	<input checked="" type="checkbox"/> Circ Sub <u>NIC</u>	T-Pulled <u>4:53 AM</u>
(E) Second Initial Flow <u>32</u>	<input type="checkbox"/> Hourly Standby	T-Out <u>6:41 AM</u>
(F) Second Final Flow <u>36</u>	<input checked="" type="checkbox"/> Mileage <u>130 RT</u> 201.50	Comments _____
(G) Final Shut-In <u>974</u>	<input type="checkbox"/> Sampler	<input type="checkbox"/> Ruined Shale Packer
(H) Final Hydrostatic <u>1649</u>	<input type="checkbox"/> Straddle	<input type="checkbox"/> Ruined Packer
Initial Open <u>45</u>	<input type="checkbox"/> Shale Packer	<input type="checkbox"/> Extra Copies
Initial Shut-In <u>45</u>	<input type="checkbox"/> Extra Packer	Sub Total <u>0</u>
Final Flow <u>45</u>	<input type="checkbox"/> Extra Recorder	Total <u>1676.50</u>
Final Shut-In <u>45</u>	<input type="checkbox"/> Day Standby	MP/DST Disc't _____
	<input type="checkbox"/> Accessibility	
	Sub Total <u>1676.50</u>	

Approved By _____ Our Representative [Signature]

TriLOBITE TESTING INC. shall not be liable for damaged of any kind of the property or personnel of the one for whom a test is made, or for any loss suffered or sustained, directly or indirectly, through the use of its equipment, or its statements or opinion concerning the results of any test, tools lost or damaged in the hole shall be paid for at cost by the party for whom the test is made.



TRILOBITE TESTING INC.

P.O. Box 1733 • Hays, Kansas 67601

Test Ticket

NO. 48064

Well Name & No. Krafft #1 Test No. 2 Date 9-14-12
 Company Bach Oil Production Elevation 2123 KB 2118 GL
 Address PO Box 723 Alma, NE 68920
 Co. Rep / Geo. Bob Peterson Rig Murfin #8
 Location: Sec. 11 Twp. 15 Rge. 19W Co. Phillips State KS

Interval Tested 3429-3475 Zone Tested LKC "F-G"
 Anchor Length 46' Drill Pipe Run 3220 Mud Wt. 9.2
 Top Packer Depth 3424 Drill Collars Run 186 Vis 60
 Bottom Packer Depth 3429 Wt. Pipe Run Ø WL 8.0
 Total Depth 3475 Chlorides 1,000 ppm System LCM 3.5 #
 Blow Description IF- 1/8" Blow built to 3"
IS- NO Return
FF- Weak surface blow started at 7min. Built to 1/4"
FS- No Return

Rec	Feet of	%gas	%oil	%water	%mud
<u>30</u>	<u>OCM</u>	<u>2</u>		<u>98</u>	
<u>60</u>	<u>OSWM</u>	<u>SPOTS</u>	<u>50</u>	<u>50</u>	
<u>Ø</u>	<u>Show of free oil in tool</u>				

Rec Total 70 BHT 98 Gravity - API RW - @ - ° F Chlorides - ppm

(A) Initial Hydrostatic <u>174</u>	<input checked="" type="checkbox"/> Test 1150	T-On Location <u>1:35 PM</u>
(B) First Initial Flow <u>23</u>	<input checked="" type="checkbox"/> Jars 250	T-Started <u>1:51 PM</u>
(C) First Final Flow <u>49</u>	<input checked="" type="checkbox"/> Safety Joint 75	T-Open <u>3:47 PM</u>
(D) Initial Shut-In <u>930</u>	<input checked="" type="checkbox"/> Circ Sub <u>NIC</u>	T-Pulled <u>7:02 PM</u>
(E) Second Initial Flow <u>55</u>	<input type="checkbox"/> Hourly Standby	T-Out <u>8:33 PM</u>
(F) Second Final Flow <u>71</u>	<input checked="" type="checkbox"/> Mileage <u>130 RT</u> 201.50	Comments _____
(G) Final Shut-In <u>896</u>	<input type="checkbox"/> Sampler	
(H) Final Hydrostatic <u>1786</u>	<input type="checkbox"/> Straddle	<input type="checkbox"/> Ruined Shale Packer
Initial Open <u>45</u>	<input type="checkbox"/> Shale Packer	<input type="checkbox"/> Ruined Packer
Initial Shut-In <u>45</u>	<input type="checkbox"/> Extra Packer	<input type="checkbox"/> Extra Copies
Final Flow <u>45</u>	<input type="checkbox"/> Extra Recorder	Sub Total <u>0</u>
Final Shut-In <u>60</u>	<input type="checkbox"/> Day Standby	Total <u>1676.50</u>
	<input type="checkbox"/> Accessibility	MP/DST Disc't _____
	Sub Total <u>1676.50</u>	

Approved By _____

Our Representative 

Trilobite Testing Inc. shall not be liable for damaged of any kind of the property or personnel of the one for whom a test is made, or for any loss suffered or sustained, directly or indirectly, through the use of its equipment, or its statements or opinion concerning the results of any test, tools lost or damaged in the hole shall be paid for at cost by the party for whom the test is made.



TRILOBITE TESTING INC.

P.O. Box 1733 • Hays, Kansas 67601

Test Ticket

NO. 48065

Well Name & No. Krafft #1 Test No. 3 Date 9-15-92
 Company Back Oil Production Elevation 2123 KB 2117 GL
 Address PO Box 723 Alma, NE 68920
 Co. Rep / Geo. Bob Peterson Rig Murkin #8
 Location: Sec. 11 Twp. 1S Rge. 19w Co. Phillips State KS

Interval Tested 3510-3545 Zone Tested LKC "I-J"
 Anchor Length 35' Drill Pipe Run 3315 Mud Wt. 9.2
 Top Packer Depth 3506 Drill Collars Run 186 Vis 60
 Bottom Packer Depth 3510 Wt. Pipe Run 18 WL 8.0
 Total Depth 3545 Chlorides 1,000 ppm System LCM 3.5#
 Blow Description IF - Surface Blow built to 1"
IS - No Return
FF - No Blow
FS - No Return

Rec	Feet of	%gas	%oil	%water	%mud
<u>10</u>	<u>OSM</u>	<u>SPOTS</u>		<u>100</u>	
Rec	Feet of	%gas	%oil	%water	%mud
Rec	Feet of	%gas	%oil	%water	%mud
Rec	Feet of	%gas	%oil	%water	%mud
Rec	Feet of	%gas	%oil	%water	%mud

Rec Total 10 BHT 99° Gravity - API RW - @ - °F Chlorides - ppm

(A) Initial Hydrostatic <u>1769</u>	<input checked="" type="checkbox"/> Test <u>1150</u>	T-On Location <u>4:50 AM</u>
(B) First Initial Flow <u>21</u>	<input checked="" type="checkbox"/> Jars <u>250</u>	T-Started <u>5:15 AM</u>
(C) First Final Flow <u>25</u>	<input checked="" type="checkbox"/> Safety Joint <u>75</u>	T-Open <u>7:25 AM</u>
(D) Initial Shut-In <u>1086</u>	<input checked="" type="checkbox"/> Circ Sub <u>NIC</u>	T-Pulled <u>10:10 AM</u>
(E) Second Initial Flow <u>27</u>	<input type="checkbox"/> Hourly Standby	T-Out <u>12:22 PM</u>
(F) Second Final Flow <u>30</u>	<input checked="" type="checkbox"/> Mileage <u>130 RT</u> 201.50	Comments
(G) Final Shut-In <u>1032</u>	<input type="checkbox"/> Sampler	
(H) Final Hydrostatic <u>1751</u>	<input type="checkbox"/> Straddle	<input type="checkbox"/> Ruined Shale Packer
Initial Open <u>45</u>	<input type="checkbox"/> Shale Packer	<input type="checkbox"/> Ruined Packer
Initial Shut-In <u>45</u>	<input type="checkbox"/> Extra Packer	<input type="checkbox"/> Extra Copies
Final Flow <u>30</u>	<input type="checkbox"/> Extra Recorder	Sub Total <u>0</u>
Final Shut-In <u>45</u>	<input type="checkbox"/> Day Standby	Total <u>1676.50</u>
	<input type="checkbox"/> Accessibility	MP/DST Disc't
	Sub Total <u>1676.50</u>	

Approved By _____ Our Representative

Trilobite Testing Inc. shall not be liable for damaged of any kind of the property or personnel of the one for whom a test is made, or for any loss suffered or sustained, directly or indirectly, through the use of its equipment, or its statements or opinion concerning the results of any test, tools lost or damaged in the hole shall be paid for at cost by the party for whom the test is made.