



**TRILOBITE TESTING, INC.**

# DRILL STEM TEST REPORT

Russell Oil, Inc.  
 POB 8050  
 Edmond, OK 73083  
 ATTN: Kitt Noah

**S35-10s-34w Thomas, KS**  
**Hazel Russell #1-35**  
 Job Ticket: 50063 **DST#: 4**  
 Test Start: 2012.08.28 @ 02:24:00

## GENERAL INFORMATION:

Formation: **Upper Johnson**  
 Deviated: No Whipstock: ft (KB)  
 Test Type: Conventional Bottom Hole (Reset)  
 Time Tool Opened: 06:34:30 Tester: Chuck Smith  
 Time Test Ended: 12:26:24 Unit No: 62  
 Interval: **4684.00 ft (KB) To 4730.00 ft (KB) (TVD)** Reference Elevations: 3240.00 ft (KB)  
 Total Depth: 4730.00 ft (KB) (TVD) 3229.00 ft (CF)  
 Hole Diameter: 7.88 inches Hole Condition: Good KB to GR/CF: 11.00 ft

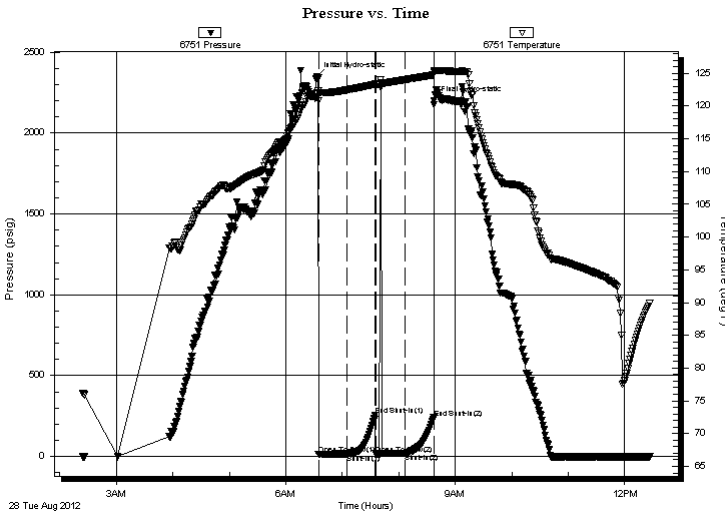
## Serial #: 6751

**Outside**

Press @ Run Depth: 18.88 psig @ 4688.00 ft (KB) Capacity: 8000.00 psig  
 Start Date: 2012.08.28 End Date: 2012.08.28 Last Calib.: 2012.08.28  
 Start Time: 02:24:02 End Time: 12:26:24 Time On Btm: 2012.08.28 @ 06:32:54  
 Time Off Btm: 2012.08.28 @ 08:37:17

**TEST COMMENT:** Opening surge died @ 5 seconds.  
 No return.  
 No blow, flushed tool, no blow.  
 No return.

## PRESSURE SUMMARY



Time (Min.)	Pressure (psig)	Temp (deg F)	Annotation
0	2351.41	121.84	Initial Hydro-static
2	13.46	120.79	Open To Flow (1)
32	15.78	122.45	Shut-In(1)
62	256.18	123.33	End Shut-In(1)
63	16.11	123.22	Open To Flow (2)
94	18.88	124.01	Shut-In(2)
124	238.90	124.75	End Shut-In(2)
125	2202.97	125.44	Final Hydro-static

## Recovery

Length (ft)	Description	Volume (bbl)
5.00	SOCM 1 to 99m	0.02

\* Recovery from multiple tests

## Gas Rates

Choke (inches)	Pressure (psig)	Gas Rate (Mcf/d)



**TRILOBITE  
TESTING, INC.**

# DRILL STEM TEST REPORT

**FLUID SUMMARY**

Russell Oil, Inc.

**S35-10s-34w Thomas, KS**

POB 8050  
Edmond, OK 73083

**Hazel Russell #1-35**

Job Ticket: 50063      **DST#: 4**

ATTN: Kitt Noah

Test Start: 2012.08.28 @ 02:24:00

## Mud and Cushion Information

Mud Type: Gel Chem	Cushion Type:	Oil API:	deg API
Mud Weight: 9.00 lb/gal	Cushion Length: ft	Water Salinity:	ppm
Viscosity: 53.00 sec/qt	Cushion Volume: bbl		
Water Loss: 9.58 in <sup>3</sup>	Gas Cushion Type:		
Resistivity: ohm.m	Gas Cushion Pressure: psig		
Salinity: 8000.00 ppm			
Filter Cake: 2.00 inches			

## Recovery Information

Recovery Table

Length ft	Description	Volume bbl
5.00	SOCM 1o 99m	0.025

Total Length: 5.00 ft      Total Volume: 0.025 bbl

Num Fluid Samples: 0      Num Gas Bombs: 0      Serial #:

Laboratory Name:      Laboratory Location:

Recovery Comments:

