



**TRILOBITE  
TESTING, INC.**

# DRILL STEM TEST REPORT

Oil Producers Inc of Kansas

**20 8s 19w Rooks**

1710 Waterfront Pkwy  
Wichita KS 67206-6603

**Lowry 1-20**

Job Ticket: 48651

**DST#: 1**

ATTN: Doug Davis

Test Start: 2012.09.07 @ 01:50:00

## GENERAL INFORMATION:

Formation: **LKC "C & D"**

Deviated: No Whipstock: 2008.00 ft (KB)

Time Tool Opened: 03:38:30

Time Test Ended: 08:30:00

Test Type: Conventional Bottom Hole (Initial)

Tester: Jim Svaty

Unit No: 58

**Interval: 3230.00 ft (KB) To 3270.00 ft (KB) (TVD)**

Reference Elevations: 2008.00 ft (KB)

Total Depth: 3270.00 ft (KB) (TVD)

1999.00 ft (CF)

Hole Diameter: 7.88 inches Hole Condition: Fair

KB to GR/CF: 9.00 ft

**Serial #: 8674**

**Inside**

Press @ Run Depth: 251.71 psig @ 3234.00 ft (KB)

Capacity: 8000.00 psig

Start Date: 2012.09.07

End Date:

2012.09.07

Last Calib.:

2012.09.07

Start Time: 01:50:05

End Time:

08:27:59

Time On Btm:

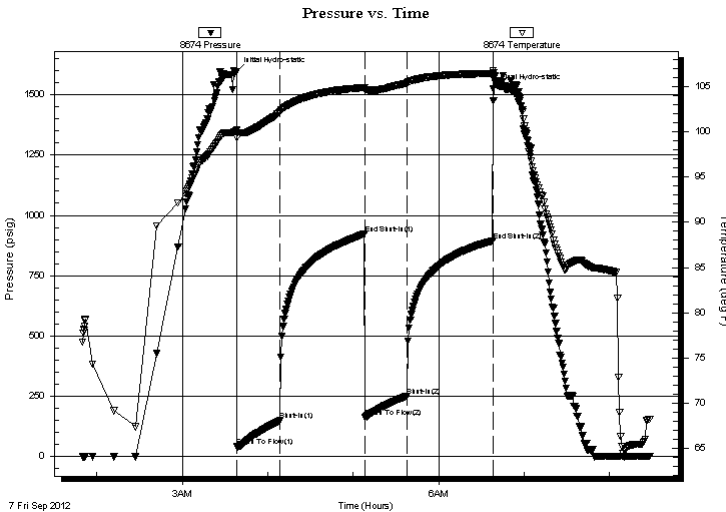
2012.09.07 @ 03:38:15

Time Off Btm:

2012.09.07 @ 06:38:15

**TEST COMMENT:** 30-IFP- BOB in 5 1/2min  
60-ISIP- No Blow  
30-FFP- BOB in 9min  
60-FSIP- No Blow

## PRESSURE SUMMARY



Time (Min.)	Pressure (psig)	Temp (deg F)	Annotation
0	1596.50	100.22	Initial Hydro-static
1	41.18	99.38	Open To Flow (1)
31	149.06	102.22	Shut-In(1)
90	923.78	104.90	End Shut-In(1)
91	162.51	104.61	Open To Flow (2)
120	251.71	105.39	Shut-In(2)
180	893.98	106.42	End Shut-In(2)
180	1525.14	106.80	Final Hydro-static

## Recovery

Length (ft)	Description	Volume (bbl)
120.00	MCW 40%w 60%w	1.68
386.00	MCW 10m 90%w	5.41

## Gas Rates

Choke (inches)	Pressure (psig)	Gas Rate (Mcf/d)



**TRILOBITE  
TESTING, INC.**

# DRILL STEM TEST REPORT

**FLUID SUMMARY**

Oil Producers Inc of Kansas

**20 8s 19w Rooks**

1710 Waterfront Pkwy  
Wichita KS 67206-6603

**Lowry 1-20**

Job Ticket: 48651

**DST#: 1**

ATTN: Doug Davis

Test Start: 2012.09.07 @ 01:50:00

## Mud and Cushion Information

Mud Type: Gel Chem

Cushion Type:

Oil API:

deg API

Mud Weight: 9.00 lb/gal

Cushion Length:

ft

Water Salinity:

ppm

Viscosity: 56.00 sec/qt

Cushion Volume:

bbbl

Water Loss: 6.79 in<sup>3</sup>

Gas Cushion Type:

Resistivity: ohm.m

Gas Cushion Pressure:

psig

Salinity: 1000.00 ppm

Filter Cake: inches

## Recovery Information

Recovery Table

Length ft	Description	Volume bbl
120.00	MCW 40%m 60%w	1.683
386.00	MCW 10m 90%w	5.415

Total Length: 506.00 ft      Total Volume: 7.098 bbl

Num Fluid Samples: 0

Num Gas Bombs: 0

Serial #:

Laboratory Name:

Laboratory Location:

Recovery Comments:

Serial #: 8674

Inside

Oil Producers Inc of Kansas

Low ry 1-20

DST Test Number: 1

