



## DRILL STEM TEST REPORT

Prepared For: **Oil Producers Inc of Kansas**

1710 Waterfront Pkwy  
Wichita KS 67206-6603

ATTN: Doug Davis

### **Lowry #1-20**

### **20 8s 19w Rooks,KS**

Start Date: 2012.09.07 @ 01:50:00

End Date: 2012.09.07 @ 08:30:00

Job Ticket #: 48651                      DST #: 1

Trilobite Testing, Inc

PO Box 362 Hays, KS 67601

ph: 785-625-4778 fax: 785-625-5620

Printed: 2012.09.11 @ 16:33:31



**TRILOBITE TESTING, INC.**

# DRILL STEM TEST REPORT

Oil Producers Inc of Kansas

**20 8s 19w Rooks,KS**

1710 Waterfront Pkw y  
Wichita KS 67206-6603

**Lowry #1-20**

Job Ticket: 48651

**DST#: 1**

ATTN: Doug Davis

Test Start: 2012.09.07 @ 01:50:00

## GENERAL INFORMATION:

Formation: **LKC " C & D "**

Deviated: No Whipstock: 2008.00 ft (KB)

Time Tool Opened: 03:38:30

Time Test Ended: 08:30:00

Test Type: Conventional Bottom Hole (Initial)

Tester: Jim Svaty

Unit No: 58

**Interval: 3230.00 ft (KB) To 3270.00 ft (KB) (TVD)**

Reference Elevations: 2008.00 ft (KB)

Total Depth: 3270.00 ft (KB) (TVD)

1999.00 ft (CF)

Hole Diameter: 7.88 inches Hole Condition: Fair

KB to GR/CF: 9.00 ft

**Serial #: 8674**

**Inside**

Press @ Run Depth: 251.71 psig @ 3234.00 ft (KB)

Capacity: 8000.00 psig

Start Date: 2012.09.07

End Date:

2012.09.07

Last Calib.: 2012.09.07

Start Time: 01:50:05

End Time:

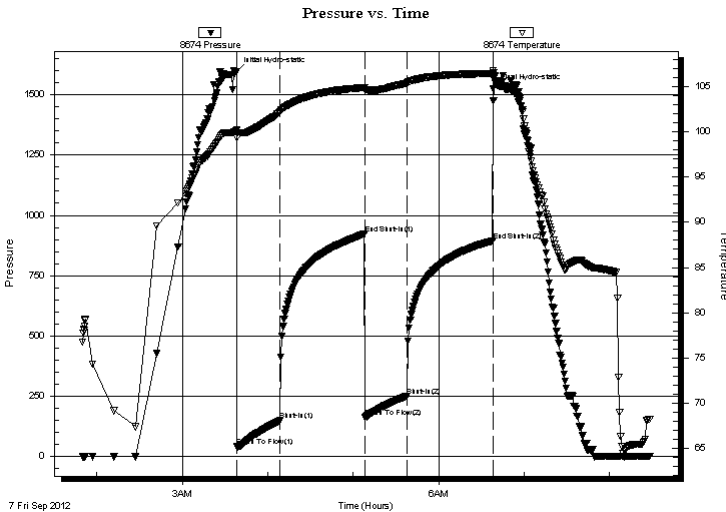
08:27:59

Time On Btm: 2012.09.07 @ 03:38:15

Time Off Btm: 2012.09.07 @ 06:38:15

**TEST COMMENT:** 30-IFP- BOB in 5 1/2 min  
60-ISIP- No Blow  
30-FFP- BOB in 9 min  
60-FSIP- No Blow

## PRESSURE SUMMARY



Time (Min.)	Pressure (psig)	Temp (deg F)	Annotation
0	1596.50	100.22	Initial Hydro-static
1	41.18	99.38	Open To Flow (1)
31	149.06	102.22	Shut-In(1)
90	923.78	104.90	End Shut-In(1)
91	162.51	104.61	Open To Flow (2)
120	251.71	105.39	Shut-In(2)
180	893.98	106.42	End Shut-In(2)
180	1525.14	106.80	Final Hydro-static

## Recovery

Length (ft)	Description	Volume (bbl)
120.00	MCW 40% m 60% w	1.68
386.00	MCW 10 m 90% w	5.41

## Gas Rates

Choke (inches)	Pressure (psig)	Gas Rate (Mcf/d)





**TRILOBITE  
TESTING, INC.**

# DRILL STEM TEST REPORT

**TOOL DIAGRAM**

Oil Producers Inc of Kansas

**20 8s 19w Rooks,KS**

1710 Waterfront Pkwy  
Wichita KS 67206-6603

**Lowry #1-20**

Job Ticket: 48651

**DST#: 1**

ATTN: Doug Davis

Test Start: 2012.09.07 @ 01:50:00

## Tool Information

Drill Pipe:	Length: 3216.00 ft	Diameter: 3.80 inches	Volume: 45.11 bbl	Tool Weight: 2500.00 lb
Heavy Wt. Pipe:	Length: 0.00 ft	Diameter: 2.75 inches	Volume: 0.00 bbl	Weight set on Packer: 25000.00 lb
Drill Collar:	Length: 0.00 ft	Diameter: 2.25 inches	Volume: 0.00 bbl	Weight to Pull Loose: 40000.00 lb
			<u>Total Volume: 45.11 bbl</u>	Tool Chased 0.00 ft
Drill Pipe Above KB:	14.00 ft			String Weight: Initial 27000.00 lb
Depth to Top Packer:	3230.00 ft			Final 30000.00 lb
Depth to Bottom Packer:	ft			
Interval between Packers:	40.00 ft			
Tool Length:	68.00 ft			
Number of Packers:	2	Diameter: 6.75 inches		

Tool Comments:

## Tool Description

**Length (ft) Serial No. Position Depth (ft) Accum. Lengths**

Tool Description	Length (ft)	Serial No.	Position	Depth (ft)	Accum. Lengths
Change Over Sub	1.00			3203.00	
Shut In Tool	5.00			3208.00	
Hydraulic tool	5.00			3213.00	
Jars	5.00		Fluid	3218.00	
Safety Joint	3.00			3221.00	
Packer	5.00			3226.00	28.00 Bottom Of Top Packer
Packer	4.00			3230.00	
Stubb	1.00		Inside	3231.00	
Perforations	2.00			3233.00	
Change Over Sub	1.00			3234.00	
Recorder	0.00	8355	Outside	3234.00	
Recorder	0.00	8674	Inside	3234.00	
Blank Spacing	32.00			3266.00	
Change Over Sub	1.00			3267.00	
Bullnose	3.00			3270.00	40.00 Bottom Packers & Anchor

**Total Tool Length: 68.00**



**TRILOBITE  
TESTING, INC.**

# DRILL STEM TEST REPORT

**FLUID SUMMARY**

Oil Producers Inc of Kansas

**20 8s 19w Rooks,KS**

1710 Waterfront Pkwy  
Wichita KS 67206-6603

**Lowry #1-20**

Job Ticket: 48651

**DST#: 1**

ATTN: Doug Davis

Test Start: 2012.09.07 @ 01:50:00

## Mud and Cushion Information

Mud Type: Gel Chem

Cushion Type:

Oil API:

deg API

Mud Weight: 9.00 lb/gal

Cushion Length:

ft

Water Salinity:

ppm

Viscosity: 56.00 sec/qt

Cushion Volume:

bbbl

Water Loss: 6.77 in<sup>3</sup>

Gas Cushion Type:

Resistivity: ohm.m

Gas Cushion Pressure:

psig

Salinity: 1000.00 ppm

Filter Cake: inches

## Recovery Information

Recovery Table

Length ft	Description	Volume bbl
120.00	MCW 40%m 60%w	1.683
386.00	MCW 10m 90%w	5.415

Total Length: 506.00 ft      Total Volume: 7.098 bbl

Num Fluid Samples: 0

Num Gas Bombs: 0

Serial #:

Laboratory Name:

Laboratory Location:

Recovery Comments:

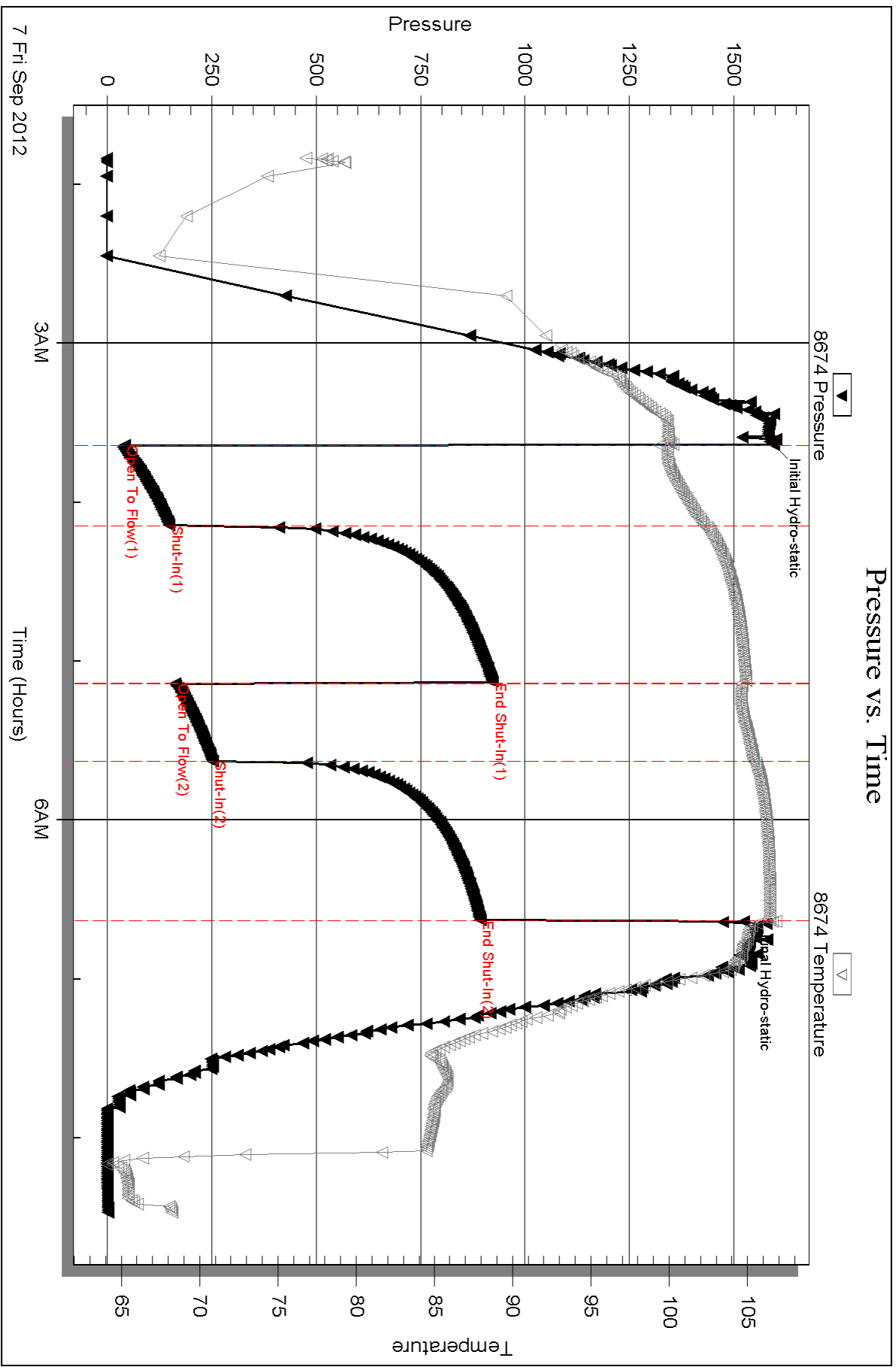
Serial #: 8674

Inside

Oil Producers Inc of Kansas

Low ry #1-20

DST Test Number: 1



Triobite Testing, Inc

Ref. No: 48851

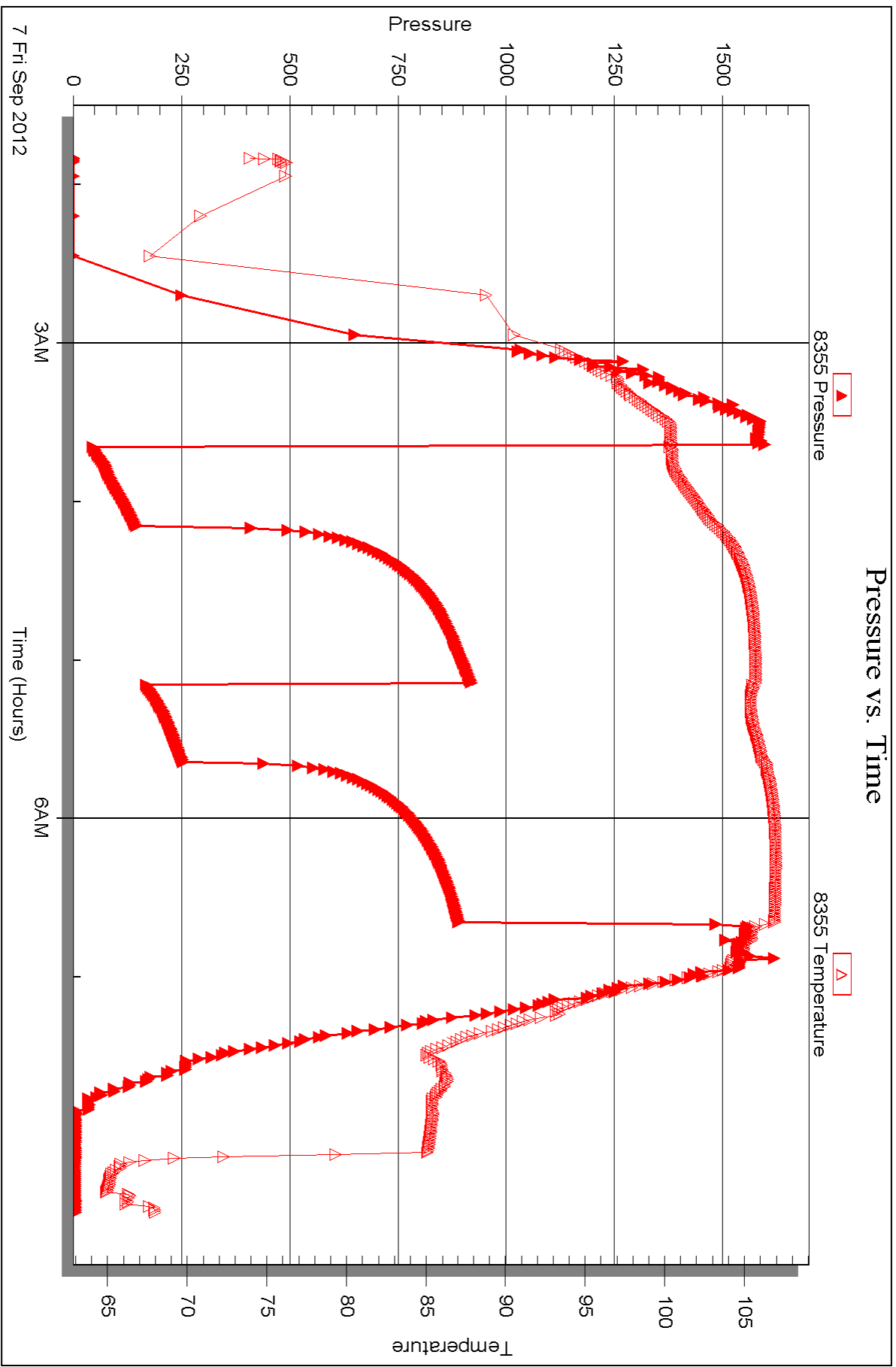
Printed: 2012.09.11 @ 16:33:36

Serial #: 8355

Outside Oil Producers Inc of Kansas

Low ry #1-20

DST Test Number: 1





## DRILL STEM TEST REPORT

Prepared For: **Oil Producers Inc of Kansas**

1710 Waterfront Pkwy  
Wichita KS 67206-6603

ATTN: Doug Davis

### **Lowry #1-20**

#### **20 8s 19w Rooks,KS**

Start Date: 2012.09.08 @ 01:37:00

End Date: 2012.09.08 @ 09:07:00

Job Ticket #: 48652                      DST #: 2

Trilobite Testing, Inc

PO Box 362 Hays, KS 67601

ph: 785-625-4778 fax: 785-625-5620

Printed: 2012.09.11 @ 16:32:48





**TRILOBITE TESTING, INC.**

# DRILL STEM TEST REPORT

Oil Producers Inc of Kansas

**20 8s 19w Rooks,KS**

1710 Waterfront Pkwy  
Wichita KS 67206-6603

**Lowry #1-20**

Job Ticket: 48652

**DST#: 2**

ATTN: Doug Davis

Test Start: 2012.09.08 @ 01:37:00

## GENERAL INFORMATION:

Formation: **Arbuckle**

Deviated: No Whipstock: 2008.00 ft (KB)

Time Tool Opened: 03:29:15

Time Test Ended: 09:07:00

Test Type: Conventional Bottom Hole (Reset)

Tester: Jim Svaty

Unit No: 58

**Interval: 3462.00 ft (KB) To 3470.00 ft (KB) (TVD)**

Reference Elevations: 2008.00 ft (KB)

Total Depth: 3470.00 ft (KB) (TVD)

1999.00 ft (CF)

Hole Diameter: 7.88 inches Hole Condition: Fair

KB to GR/CF: 9.00 ft

**Serial #: 8674**

**Inside**

Press @ Run Depth: 335.80 psig @ 3463.00 ft (KB)

Capacity: 8000.00 psig

Start Date: 2012.09.08

End Date:

2012.09.08

Last Calib.:

2012.09.08

Start Time: 01:37:05

End Time:

09:04:59

Time On Btm:

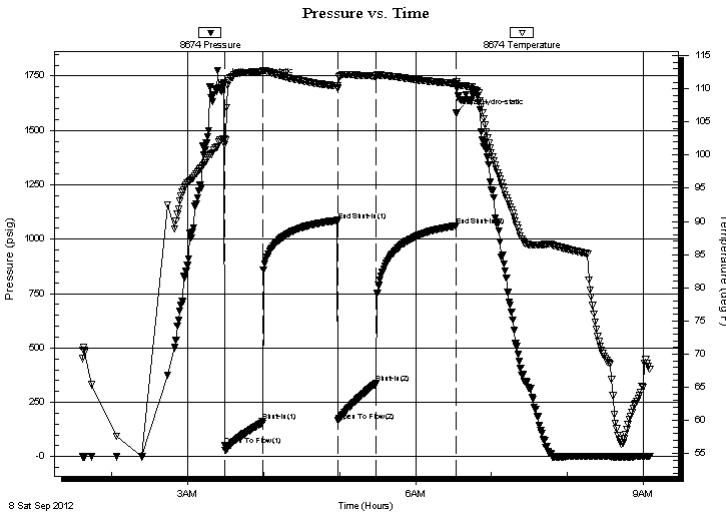
2012.09.08 @ 03:29:00

Time Off Btm:

2012.09.08 @ 06:32:15

**TEST COMMENT:** 30-IFP- BOB in 5 1/2 min  
60-ISIP- Weak Surface Blow in 6min Died in 14 min  
30-FFP- BOB in 5 min  
60-FSIP- No Blow

## PRESSURE SUMMARY



Time (Min.)	Pressure (psig)	Temp (deg F)	Annotation
0	1717.84	102.49	Initial Hydro-static
1	52.25	101.59	Open To Flow (1)
30	161.74	112.49	Shut-In(1)
90	1083.07	110.42	End Shut-In(1)
90	164.65	109.99	Open To Flow (2)
120	335.80	111.91	Shut-In(2)
183	1061.20	110.79	End Shut-In(2)
184	1579.16	111.10	Final Hydro-static

## Recovery

Length (ft)	Description	Volume (bbl)
2.00	Oil 100%	0.03
80.00	O&WCM 2%o 28%w 70%m	1.12
569.00	VSO&MCW 1%o 10%m 89%w	7.98

\* Recovery from multiple tests

## Gas Rates

Choke (inches)	Pressure (psig)	Gas Rate (Mcf/d)





**TRILOBITE  
TESTING, INC.**

# DRILL STEM TEST REPORT

**TOOL DIAGRAM**

Oil Producers Inc of Kansas

**20 8s 19w Rooks,KS**

1710 Waterfront Pkwy  
Wichita KS 67206-6603

**Lowry #1-20**

Job Ticket: 48652

**DST#: 2**

ATTN: Doug Davis

Test Start: 2012.09.08 @ 01:37:00

## Tool Information

Drill Pipe:	Length: 3466.00 ft	Diameter: 3.80 inches	Volume: 48.62 bbl	Tool Weight:	2500.00 lb
Heavy Wt. Pipe:	Length: 0.00 ft	Diameter: 2.75 inches	Volume: 0.00 bbl	Weight set on Packer:	25000.00 lb
Drill Collar:	Length: 0.00 ft	Diameter: 2.25 inches	Volume: 0.00 bbl	Weight to Pull Loose:	35000.00 lb
			<u>Total Volume: 48.62 bbl</u>	Tool Chased	0.00 ft
Drill Pipe Above KB:	32.00 ft			String Weight: Initial	29000.00 lb
Depth to Top Packer:	3462.00 ft			Final	32000.00 lb
Depth to Bottom Packer:	ft				
Interval between Packers:	8.00 ft				
Tool Length:	36.00 ft				
Number of Packers:	2	Diameter: 6.75 inches			

Tool Comments:

Tool Description	Length (ft)	Serial No.	Position	Depth (ft)	Accum. Lengths
------------------	-------------	------------	----------	------------	----------------

Change Over Sub	1.00			3435.00	
Shut In Tool	5.00			3440.00	
Hydraulic tool	5.00			3445.00	
Jars	5.00		Fluid	3450.00	
Safety Joint	3.00			3453.00	
Packer	5.00			3458.00	28.00 Bottom Of Top Packer
Packer	4.00			3462.00	
Stubb	1.00		Inside	3463.00	
Recorder	0.00	8355	Outside	3463.00	
Recorder	0.00	8674	Inside	3463.00	
Perforations	4.00			3467.00	
Bullnose	3.00			3470.00	8.00 Bottom Packers & Anchor

**Total Tool Length: 36.00**



**TRILOBITE  
TESTING, INC.**

# DRILL STEM TEST REPORT

**FLUID SUMMARY**

Oil Producers Inc of Kansas

**20 8s 19w Rooks,KS**

1710 Waterfront Pkw y  
Wichita KS 67206-6603

**Lowry #1-20**

Job Ticket: 48652

**DST#: 2**

ATTN: Doug Davis

Test Start: 2012.09.08 @ 01:37:00

## Mud and Cushion Information

Mud Type: Gel Chem

Cushion Type:

Oil API:

deg API

Mud Weight: 9.00 lb/gal

Cushion Length:

ft

Water Salinity:

ppm

Viscosity: 56.00 sec/qt

Cushion Volume:

bbbl

Water Loss: 6.78 in<sup>3</sup>

Gas Cushion Type:

Resistivity: ohm.m

Gas Cushion Pressure:

psig

Salinity: 1200.00 ppm

Filter Cake: inches

## Recovery Information

Recovery Table

Length ft	Description	Volume bbl
2.00	Oil 100%	0.028
80.00	O&WCM 2%o 28%w 70%m	1.122
569.00	VSO&MCW 1%o 10%m 89%w	7.982

Total Length: 651.00 ft

Total Volume: 9.132 bbl

Num Fluid Samples: 0

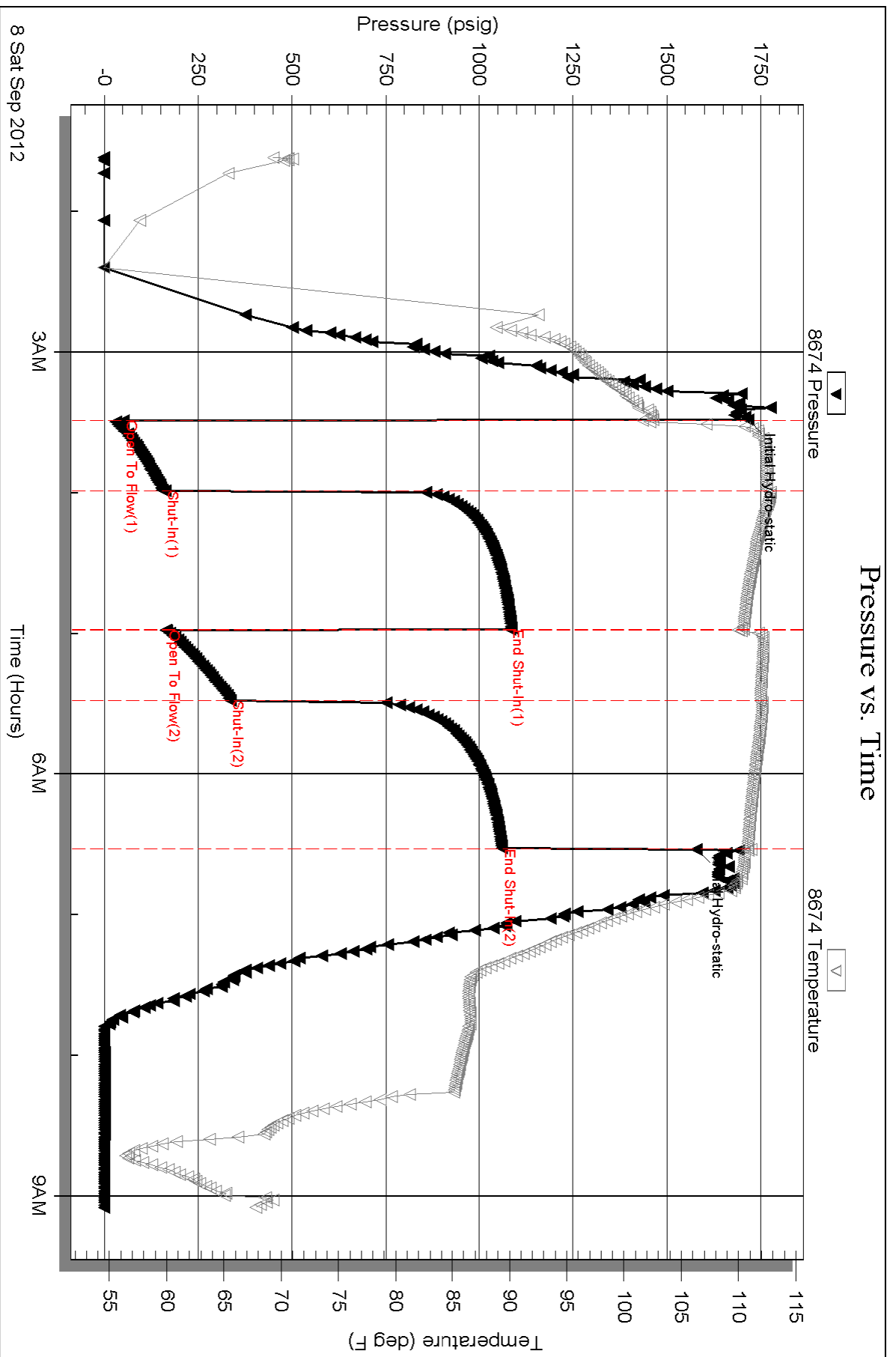
Num Gas Bombs: 0

Serial #:

Laboratory Name:

Laboratory Location:

Recovery Comments:

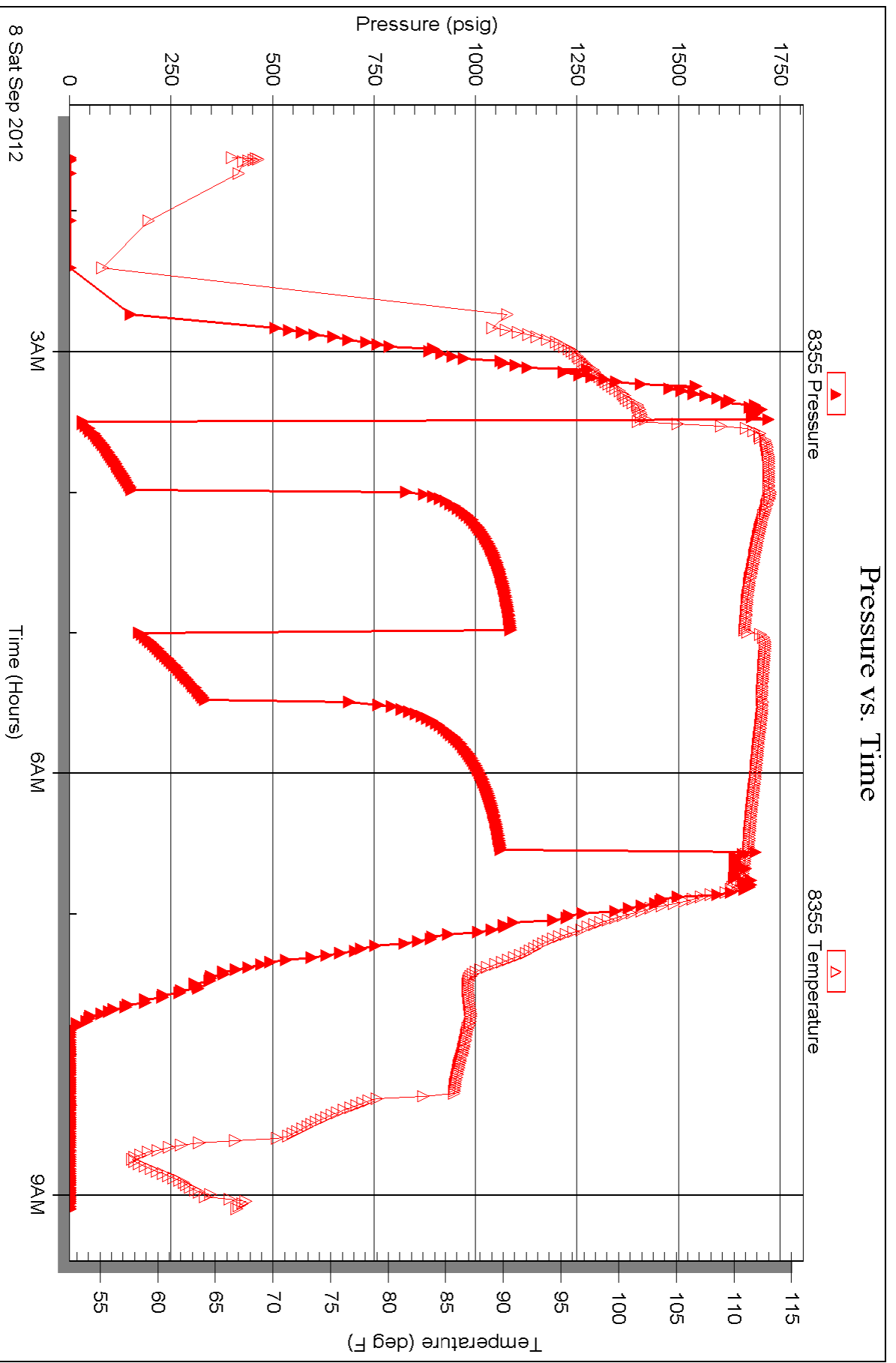


Serial #: 8355

Outside Oil Producers Inc of Kansas

Low ry #1-20

DST Test Number: 2



Triobite Testing, Inc

Ref. No: 48852

Printed: 2012.09.11 @ 16:32:53



# TRILOBITE TESTING INC.

P.O. Box 1733 • Hays, Kansas 67601

## Test Ticket

NO. 48651

4/10

Well Name & No. Lowry 1-20 Test No. 1 Date 9-7-12  
 Company Oil Producers Inc of Kansas Elevation 2008 KB 1999 GL  
 Address 1710 Waterfront Pkwy Wichita KS 67206-6603  
 Co. Rep / Geo. Doug Davis 316-641-4469 Rig Southwind Rig #2  
 Location: Sec. 20 Twp. 8<sup>s</sup> Rge. 19<sup>w</sup> Co. Rooks State KS

Interval Tested 3230-3270 Zone Tested LKC "c & d"  
 Anchor Length 40 Drill Pipe Run 3216 Mud Wt. 8.7  
 Top Packer Depth 3225 Drill Collars Run 0 Vis 56  
 Bottom Packer Depth 3230 Wt. Pipe Run 0 WL 6.8  
 Total Depth 3270 Chlorides 1000 ppm System LCM 2  
 Blow Description IFP - BOB in 5 1/2 min.  
ISIP - No Blow  
FFP - BOB in 9 min.  
FSIP - No Blow

Rec	Feet of	%gas	%oil	%water	%mud
<u>120</u>	<u>MCW</u>		<u>60</u>	<u>40</u>	
<u>386</u>	<u>MCW</u>		<u>90</u>	<u>10</u>	
Rec	Feet of	%gas	%oil	%water	%mud
Rec	Feet of	%gas	%oil	%water	%mud
Rec	Feet of	%gas	%oil	%water	%mud

Rec Total 506 BHT 106 Gravity \_\_\_\_\_ API RW 0.07 @ 64 °F Chlorides 135,000 ppm

(A) Initial Hydrostatic <u>1596</u>	<input checked="" type="checkbox"/> Test 1150	T-On Location <u>00:16</u>
(B) First Initial Flow <u>41</u>	<input checked="" type="checkbox"/> Jars 250	T-Started <u>01:50</u>
(C) First Final Flow <u>149</u>	<input checked="" type="checkbox"/> Safety Joint 75	T-Open <u>03:40</u>
(D) Initial Shut-In <u>923</u>	<input type="checkbox"/> Circ Sub	T-Pulled <u>06:40</u>
(E) Second Initial Flow <u>162</u>	<input type="checkbox"/> Hourly Standby	T-Out <u>08:30</u>
(F) Second Final Flow <u>251</u>	<input checked="" type="checkbox"/> Mileage <u>82 RT</u> 127.10	Comments _____
(G) Final Shut-In <u>893</u>	<input type="checkbox"/> Sampler	
(H) Final Hydrostatic <u>1525</u>	<input type="checkbox"/> Straddle	<input type="checkbox"/> Ruined Shale Packer
Initial Open <u>30</u>	<input type="checkbox"/> Shale Packer	<input type="checkbox"/> Ruined Packer
Initial Shut-In <u>60</u>	<input type="checkbox"/> Extra Packer	<input type="checkbox"/> Extra Copies
Final Flow <u>30</u>	<input type="checkbox"/> Extra Recorder	Sub Total <u>0</u>
Final Shut-In <u>60</u>	<input type="checkbox"/> Day Standby	Total <u>1602.10</u>
	<input type="checkbox"/> Accessibility	MP/DST Disc't _____
	Sub Total <u>1602.10</u>	

Approved By \_\_\_\_\_ Our Representative [Signature]  
 Trilobite Testing Inc. shall not be liable for damaged of any kind of the property or personnel of the one for whom a test is made, or for any loss suffered or sustained, directly or indirectly, through the use of its equipment, or its statements or opinion concerning the results of any test, tools lost or damaged in the hole shall be paid for at cost by the party for whom the test is made.



# TRILOBITE TESTING INC.

P.O. Box 1733 • Hays, Kansas 67601

## Test Ticket

NO. 48652

Well Name & No. Lowry 1-20 Test No. 2 Date 9-8-12  
 Company Oil Producers Inc. of KANSAS Elevation 2008 KB 1999 GL  
 Address 1710 Waterfront Pkwy Wichita Ks. 67206-6603  
 Co. Rep / Geo. Doug Davis Rig Southwind Rig #2  
 Location: Sec. 20 Twp. P5 Rge. 19W Co. Rooks State KS

Interval Tested 3462-3470 Zone Tested Arbuckle  
 Anchor Length 8 Drill Pipe Run 3466 Mud Wt. 9.0  
 Top Packer Depth 3457 Drill Collars Run Ø Vis 56  
 Bottom Packer Depth 3462 Wt. Pipe Run Ø WL 6.8  
 Total Depth 3470 Chlorides 1200 ppm System LCM 2

Blow Description IFP - BOB in 5 1/2 min  
FSIP - Weak Surface Blow in 6 min Ried in 14 min  
FFP - BOB in 5 min  
FSIP - No Blow

Rec	Feet of	%gas	%oil	%water	%mud
<u>2</u>	<u>Oil</u>	<u>100</u>			
<u>80</u>	<u>O &amp; NCM</u>	<u>2</u>	<u>28</u>	<u>70</u>	
<u>569</u>	<u>VSO &amp; MCW</u>	<u>1</u>	<u>89</u>	<u>10</u>	
Rec Total	<u>651</u>				

BHT 110 Gravity API RW .18 @ 52 ° F Chlorides 57,000 ppm

(A) Initial Hydrostatic <u>1717</u>	<input checked="" type="checkbox"/> Test 1150	T-On Location <u>01:00</u>
(B) First Initial Flow <u>52</u>	<input checked="" type="checkbox"/> Jars 250	T-Started <u>01:37</u>
(C) First Final Flow <u>161</u>	<input checked="" type="checkbox"/> Safety Joint 75	T-Open <u>03:30</u>
(D) Initial Shut-In <u>1083</u>	<input type="checkbox"/> Circ Sub	T-Pulled <u>06:30</u>
(E) Second Initial Flow <u>164</u>	<input type="checkbox"/> Hourly Standby	T-Out <u>09:07</u>
(F) Second Final Flow <u>335</u>	<input checked="" type="checkbox"/> Mileage 127.10	Comments _____
(G) Final Shut-In <u>1061</u>	<input type="checkbox"/> Sampler	
(H) Final Hydrostatic <u>1579</u>	<input type="checkbox"/> Straddle	<input type="checkbox"/> Ruined Shale Packer
	<input type="checkbox"/> Shale Packer	<input type="checkbox"/> Ruined Packer
Initial Open <u>30</u>	<input type="checkbox"/> Extra Packer	<input type="checkbox"/> Extra Copies
Initial Shut-In <u>60</u>	<input type="checkbox"/> Extra Recorder	Sub Total <u>0</u>
Final Flow <u>30</u>	<input type="checkbox"/> Day Standby	Total <u>1602.10</u>
Final Shut-In <u>60</u>	<input type="checkbox"/> Accessibility	MP/DST Disc't _____
	Sub Total <u>1602.10</u>	

Approved By \_\_\_\_\_ Our Representative [Signature]

TriLOBite Testing Inc. shall not be liable for damaged of any kind of the property or personnel of the one for whom a test is made, or for any loss suffered or sustained, directly or indirectly, through the use of its equipment, or its statements or opinion concerning the results of any test, tools lost or damaged in the hole shall be paid for at cost by the party for whom the test is made.