



**TRILOBITE
TESTING, INC**

DRILL STEM TEST REPORT

Samuel Gary Jr & Assoc Inc

34 14s 15w Russell

1515 Wynkoop Ste 700
Denver CO 80202

Roman Catholic D1-34

ATTN: Clayton Camozzi

Job Ticket: 47644

DST#: 2

Test Start: 2012.08.20 @ 21:40:00

GENERAL INFORMATION:

Formation: **LKC " I & J "**

Deviated: No Whipstock: 1886.00 ft (KB)

Time Tool Opened: 23:31:45

Time Test Ended: 04:08:00

Test Type: Conventional Bottom Hole (Reset)

Tester: Jim Svaty

Unit No: 58

Interval: 3270.00 ft (KB) To 3314.00 ft (KB) (TVD)

Reference Elevations: 1886.00 ft (KB)

Total Depth: 3314.00 ft (KB) (TVD)

1876.00 ft (CF)

Hole Diameter: 7.88 inches Hole Condition: Fair

KB to GR/CF: 10.00 ft

Serial #: 8672 Outside

Press @ RunDepth: 22.04 psig @ 3271.00 ft (KB)

Capacity: 8000.00 psig

Start Date: 2012.08.20

End Date:

2012.08.21

Last Calib.: 2012.08.21

Start Time: 21:40:05

End Time:

04:07:29

Time On Btm: 2012.08.20 @ 23:31:30

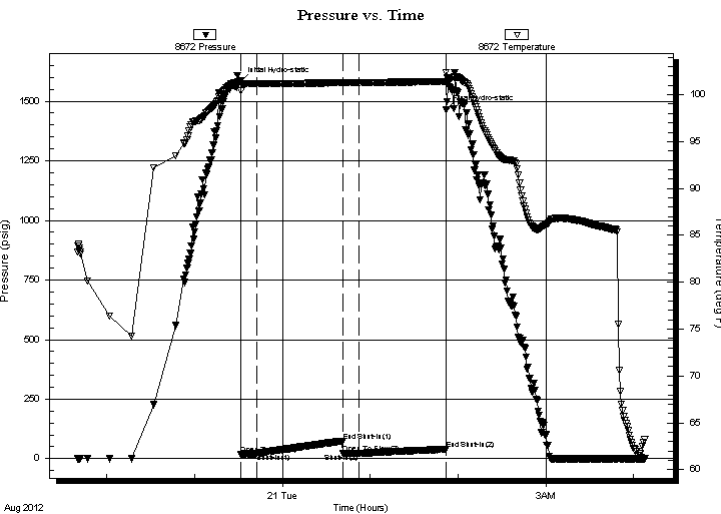
Time Off Btm: 2012.08.21 @ 01:52:00

TEST COMMENT: 10-IFP- Weak Surface Blow Died in 6min.

60-ISIP- No Blow

10-FFP- No Blow

60-FSIP- No Blow



PRESSURE SUMMARY

Time (Min.)	Pressure (psig)	Temp (deg F)	Annotation
0	1583.21	101.49	Initial Hydro-static
1	18.28	100.44	Open To Flow (1)
11	21.23	101.16	Shut-In(1)
70	74.38	101.29	End Shut-In(1)
70	23.53	101.27	Open To Flow (2)
81	22.04	101.30	Shut-In(2)
141	39.65	101.41	End Shut-In(2)
141	1466.08	102.39	Final Hydro-static

Recovery

Length (ft)	Description	Volume (bbl)
2.00	Mud 100%	0.03

* Recovery from multiple tests

Gas Rates

Choke (inches)	Pressure (psig)	Gas Rate (Mcf/d)



**TRILOBITE
TESTING, INC**

DRILL STEM TEST REPORT

FLUID SUMMARY

Samuel Gary Jr & Assoc Inc

34 14s 15w Russell

1515 Wynkoop Ste 700
Denver CO 80202

Roman Catholic D1-34

Job Ticket: 47644

DST#: 2

ATTN: Clayton Camozzi

Test Start: 2012.08.20 @ 21:40:00

Mud and Cushion Information

Mud Type: Gel Chem

Cushion Type:

Oil API:

deg API

Mud Weight: 9.00 lb/gal

Cushion Length:

ft

Water Salinity:

ppm

Viscosity: 55.00 sec/qt

Cushion Volume:

bbf

Water Loss: 8.36 in³

Gas Cushion Type:

Resistivity: ohm.m

Gas Cushion Pressure:

psig

Salinity: 5500.00 ppm

Filter Cake: inches

Recovery Information

Recovery Table

Length ft	Description	Volume bbf
2.00	Mud 100%	0.028

Total Length: 2.00 ft Total Volume: 0.028 bbf

Num Fluid Samples: 0

Num Gas Bombs: 0

Serial #:

Laboratory Name:

Laboratory Location:

Recovery Comments: Sampler 2000ml Mud 100%

