



**TRILOBITE
TESTING, INC.**

DRILL STEM TEST REPORT

Venture Resources Inc
2255 S. Wadsworth Ste. 205
Lakewood, Colo
80227
ATTN: Marc Downing

17-8s-21w Graham ,Ks

Pelton-Billips #1

Job Ticket: 50166

DST#: 1

Test Start: 2012.10.16 @ 16:15:24

GENERAL INFORMATION:

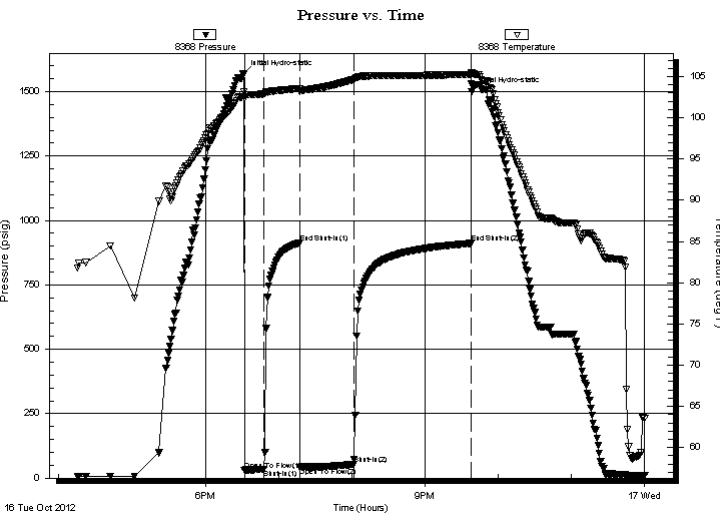
Formation: **C**
 Deviated: No Whipstock: 0.00 ft (KB)
 Time Tool Opened: 18:31:54
 Time Test Ended: 00:20:39
 Interval: **3290.00 ft (KB) To 3322.00 ft (KB) (TVD)**
 Total Depth: 3322.00 ft (KB) (TVD)
 Hole Diameter: 7.88 inches Hole Condition: Fair
 Test Type: Conventional Bottom Hole (Initial)
 Tester: Shane McBride
 Unit No: 55
 Reference Elevations: 2036.00 ft (KB)
 2030.00 ft (CF)
 KB to GR/CF: 6.00 ft

Serial #: 8368

Inside

Press @ Run Depth: 53.72 psig @ 3291.00 ft (KB) Capacity: 8000.00 psig
 Start Date: 2012.10.16 End Date: 2012.10.17 Last Calib.: 2012.10.17
 Start Time: 16:15:24 End Time: 00:00:39 Time On Btm: 2012.10.16 @ 18:31:39
 Time Off Btm: 2012.10.16 @ 21:38:09

TEST COMMENT: 2" in blow
 No return
 3 1/4" in blow
 No return



PRESSURE SUMMARY

Time (Min.)	Pressure (psig)	Temp (deg F)	Annotation
0	1567.95	103.10	Initial Hydro-static
1	30.55	102.36	Open To Flow (1)
17	34.89	102.89	Shut-In(1)
46	912.07	103.56	End Shut-In(1)
46	43.15	103.14	Open To Flow (2)
90	53.72	104.62	Shut-In(2)
186	911.22	105.25	End Shut-In(2)
187	1501.07	105.44	Final Hydro-static

Recovery

Length (ft)	Description	Volume (bbl)
65.00	mc w 40% m 60% w	0.91

Gas Rates

	Choke (inches)	Pressure (psig)	Gas Rate (Mcf/d)



**TRILOBITE
TESTING, INC.**

DRILL STEM TEST REPORT

FLUID SUMMARY

Venture Resources Inc
2255 S. Wadsworth Ste. 205
Lakewood, Colo
80227
ATTN: Marc Downing

17-8s-21w Graham, Ks
Pelton-Billips #1
Job Ticket: 50166 **DST#: 1**
Test Start: 2012.10.16 @ 16:15:24

Mud and Cushion Information

Mud Type: Gel Chem	Cushion Type:	Oil API: 0 deg API
Mud Weight: 9.00 lb/gal	Cushion Length: ft	Water Salinity: 22500 ppm
Viscosity: 50.00 sec/qt	Cushion Volume: bbl	
Water Loss: 7.98 in ³	Gas Cushion Type:	
Resistivity: 0.00 ohm.m	Gas Cushion Pressure: psig	
Salinity: 1600.00 ppm		
Filter Cake: 1.00 inches		

Recovery Information

Recovery Table

Length ft	Description	Volume bbl
65.00	m c w 40% m 60% w	0.912

Total Length: 65.00 ft Total Volume: 0.912 bbl
 Num Fluid Samples: 0 Num Gas Bombs: 0 Serial #:
 Laboratory Name: Laboratory Location:
 Recovery Comments: rw .331 @ 65*f= 22,500 chlor
 sampler 400ml mud 1600ml water 2000ml total fluid 530 psi

