



**TRILOBITE TESTING, INC.**

# DRILL STEM TEST REPORT

Venture Resources Inc  
 2255 S. Wadsworth Ste. 205  
 Lakewood, Colo  
 80227  
 ATTN: Marc Downing

**17-8s-21w Graham ,Ks**

**Pelton-Billips #1**

Job Ticket: 50167      **DST#: 2**  
 Test Start: 2012.10.17 @ 11:25:19

## GENERAL INFORMATION:

Formation: **D-F**  
 Deviated: No Whipstock: 0.00 ft (KB)  
 Time Tool Opened: 13:33:49  
 Time Test Ended: 18:55:04  
 Interval: **3319.00 ft (KB) To 3363.00 ft (KB) (TVD)**  
 Total Depth: 3363.00 ft (KB) (TVD)  
 Hole Diameter: 7.88 inches Hole Condition: Fair  
 Test Type: Conventional Bottom Hole (Reset)  
 Tester: Shane McBride  
 Unit No: 55  
 Reference Elevations: 2036.00 ft (KB)  
 2030.00 ft (CF)  
 KB to GR/CF: 6.00 ft

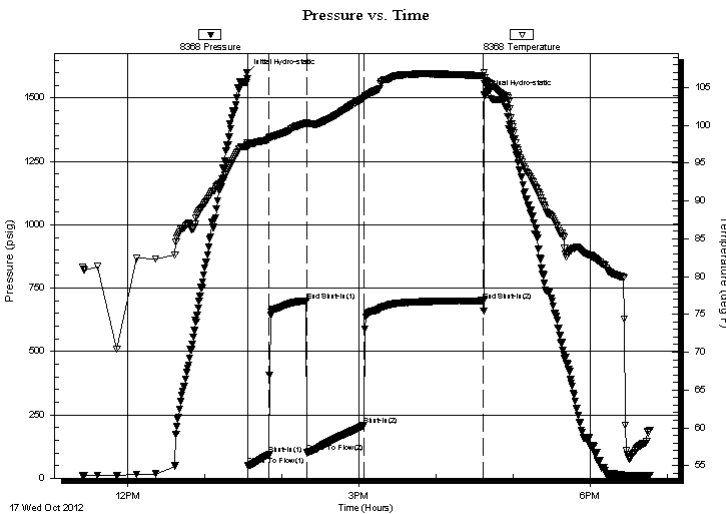
## Serial #: 8368

Inside

Press @ Run Depth: 208.54 psig @ 3320.00 ft (KB)      Capacity: 8000.00 psig  
 Start Date: 2012.10.17      End Date: 2012.10.17      Last Calib.: 2012.10.17  
 Start Time: 11:25:19      End Time: 18:46:04      Time On Btm: 2012.10.17 @ 13:32:49  
 Time Off Btm: 2012.10.17 @ 16:37:19

TEST COMMENT: B.O.B. in 15 min  
 No return  
 B.O.B. in 19 min.  
 No return

## PRESSURE SUMMARY



Time (Min.)	Pressure (psig)	Temp (deg F)	Annotation
0	1598.24	97.42	Initial Hydro-static
1	49.87	97.29	Open To Flow (1)
18	92.40	98.19	Shut-In(1)
47	700.32	100.31	End Shut-In(1)
47	100.30	100.15	Open To Flow (2)
92	208.54	103.64	Shut-In(2)
184	700.70	106.55	End Shut-In(2)
185	1512.74	107.00	Final Hydro-static

## Recovery

Length (ft)	Description	Volume (bbl)
68.00	mcw 50% m 50% w	0.95
124.00	s m c w 15% m 85% w	1.74
248.00	water 100% w	3.48

\* Recovery from multiple tests

## Gas Rates

Choke (inches)	Pressure (psig)	Gas Rate (Mcf/d)



**TRILOBITE  
TESTING, INC.**

# DRILL STEM TEST REPORT

**FLUID SUMMARY**

Venture Resources Inc  
2255 S. Wadsworth Ste. 205  
Lakewood, Colo  
80227  
ATTN: Marc Downing

**17-8s-21w Graham, Ks**  
**Pelton-Billips #1**  
Job Ticket: 50167      **DST#: 2**  
Test Start: 2012.10.17 @ 11:25:19

## Mud and Cushion Information

Mud Type: Gel Chem	Cushion Type:	Oil API: 0 deg API
Mud Weight: 9.00 lb/gal	Cushion Length: ft	Water Salinity: 28000 ppm
Viscosity: 46.00 sec/qt	Cushion Volume: bbl	
Water Loss: 7.98 in <sup>3</sup>	Gas Cushion Type:	
Resistivity: 0.00 ohm.m	Gas Cushion Pressure: psig	
Salinity: 1600.00 ppm		
Filter Cake: 1.00 inches		

## Recovery Information

Recovery Table

Length ft	Description	Volume bbl
68.00	mcw 50% m 50% w	0.954
124.00	s m c w 15% m 85% w	1.739
248.00	water 100% w	3.479

Total Length: 440.00 ft      Total Volume: 6.172 bbl

Num Fluid Samples: 0      Num Gas Bombs: 0      Serial #:

Laboratory Name:      Laboratory Location:

Recovery Comments: sampler 2000ml water 280 psi  
rw .291 @ 62\*f = 28,000 chlor

