



**TRILOBITE
TESTING, INC**

DRILL STEM TEST REPORT

Samuel Gary Jr. & Associates, Inc.

16/12S/16W-Ellis

1515 Wynkoop Ste. #700
Denver, CO 80202

Glassman #3-16

Job Ticket: 49485

DST#: 2

ATTN: Clayton Camozzi

Test Start: 2012.08.22 @ 03:14:15

GENERAL INFORMATION:

Formation: **LKC "C-D"**

Deviated: No Whipstock: ft (KB)

Time Tool Opened: 04:53:35

Time Test Ended: 10:59:45

Test Type: Conventional Bottom Hole (Initial)

Tester: Dustin Rash

Unit No: 38

Interval: 3216.00 ft (KB) To 3245.00 ft (KB) (TVD)

Reference Elevations: 1974.00 ft (KB)

Total Depth: 3245.00 ft (KB) (TVD)

1966.00 ft (CF)

Hole Diameter: 7.88 inches Hole Condition: Fair

KB to GR/CF: 8.00 ft

Serial #: 8354

Inside

Press @ Run Depth: 68.97 psig @ 3220.00 ft (KB)

Capacity: 8000.00 psig

Start Date: 2012.08.22

End Date:

2012.08.22

Last Calib.:

2012.08.22

Start Time:

03:24:15

End Time:

10:59:45

Time On Btm:

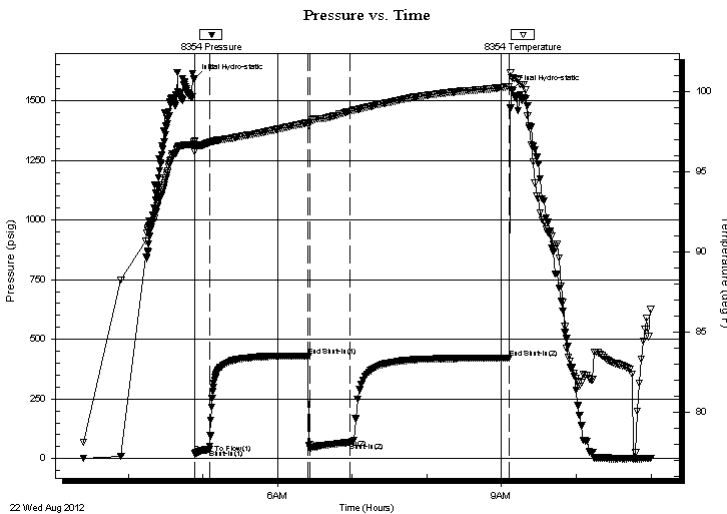
2012.08.22 @ 04:53:25

Time Off Btm:

2012.08.22 @ 09:08:15

TEST COMMENT: IF-Weak building blow . Built to 3 inches.
ISI-No Return.
FF-Weak building blow . Built to 5&1/2 inches.
FSI-No Return. Flow Times- 10-75-30-120

PRESSURE SUMMARY



Time (Min.)	Pressure (psig)	Temp (deg F)	Annotation
0	1593.10	96.90	Initial Hydro-static
1	20.71	96.26	Open To Flow (1)
12	39.29	96.82	Shut-In(1)
92	430.54	98.07	End Shut-In(1)
93	44.25	98.06	Open To Flow (2)
125	68.97	98.76	Shut-In(2)
253	422.66	100.32	End Shut-In(2)
255	1545.14	100.87	Final Hydro-static

Recovery

Length (ft)	Description	Volume (bbl)
110.00	85%Water/15%Mud	1.27
2.00	100%Oil	0.03

Gas Rates

Choke (inches)	Pressure (psig)	Gas Rate (Mcf/d)



**TRILOBITE
TESTING, INC**

DRILL STEM TEST REPORT

Samuel Gary Jr. & Associates, Inc.

16/12S/16W-Ellis

1515 Wynkoop Ste. #700
Denver, CO 80202

Glassman #3-16

ATTN: Clayton Camozzi

Job Ticket: 49485

DST#: 2

Test Start: 2012.08.22 @ 03:14:15

GENERAL INFORMATION:

Formation: **LKC "C-D"**

Deviated: No Whipstock: ft (KB)

Time Tool Opened: 04:53:35

Time Test Ended: 10:59:45

Test Type: Conventional Bottom Hole (Initial)

Tester: Dustin Rash

Unit No: 38

Interval: 3216.00 ft (KB) To 3245.00 ft (KB) (TVD)

Reference Elevations: 1974.00 ft (KB)

Total Depth: 3245.00 ft (KB) (TVD)

1966.00 ft (CF)

Hole Diameter: 7.88 inches Hole Condition: Fair

KB to GR/CF: 8.00 ft

Serial #: 8653 Fluid

Press @ RunDepth: psig @ 3186.00 ft (KB)

Capacity: 8000.00 psig

Start Date: 2012.08.22 End Date: 2012.08.22

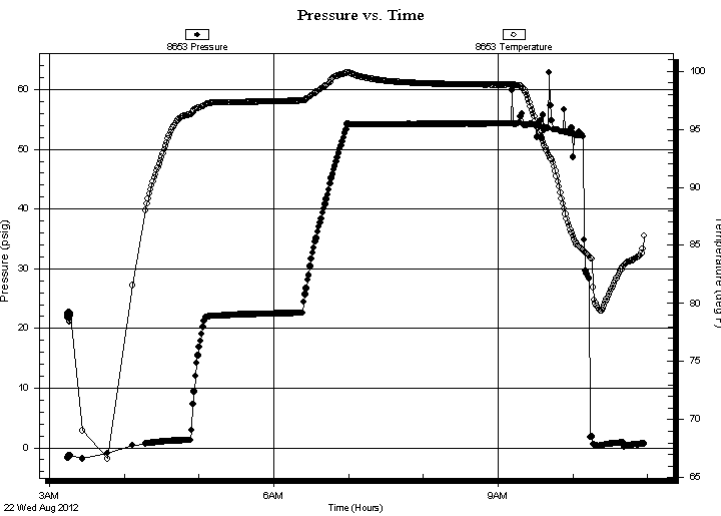
Last Calib.: 2012.08.22

Start Time: 03:14:46 End Time: 10:57:45

Time On Btm:

Time Off Btm:

TEST COMMENT: IF-Weak building blow . Built to 3 inches.
 IS-No Return.
 FF-Weak building blow . Built to 5&1/2 inches.
 FS-No Return. Flow Times- 10-75-30-120



PRESSURE SUMMARY

Time (Min.)	Pressure (psig)	Temp (deg F)	Annotation

Recovery

Length (ft)	Description	Volume (bbl)
110.00	85%Water/15%Mud	1.27
2.00	100%Oil	0.03

Gas Rates

	Choke (inches)	Pressure (psig)	Gas Rate (Mcf/d)



**TRILOBITE
TESTING, INC**

DRILL STEM TEST REPORT

FLUID SUMMARY

Samuel Gary Jr. & Associates, Inc.

16/12S/16W-Ellis

1515 Wynkoop Ste. #700
Denver, CO 80202

Glassman #3-16

Job Ticket: 49485

DST#: 2

ATTN: Clayton Camozzi

Test Start: 2012.08.22 @ 03:14:15

Mud and Cushion Information

Mud Type: Gel Chem	Cushion Type:	Oil API:	deg API
Mud Weight: 9.00 lb/gal	Cushion Length: ft	Water Salinity: 16000 ppm	
Viscosity: 63.00 sec/qt	Cushion Volume: bbl		
Water Loss: 7.98 in ³	Gas Cushion Type:		
Resistivity: 0.33 ohm.m	Gas Cushion Pressure: psig		
Salinity: 3000.00 ppm			
Filter Cake: inches			

Recovery Information

Recovery Table

Length ft	Description	Volume bbl
110.00	85%Water/15%Mud	1.270
2.00	100%Oil	0.028

Total Length: 112.00 ft Total Volume: 1.298 bbl

Num Fluid Samples: 0 Num Gas Bombs: 0 Serial #:

Laboratory Name: Laboratory Location:

Recovery Comments: Sampler-2000ML Total. 1800ML-Water, 150ML-Mud, 50ML-Oil
Resistivity- .336=15,500 chlorides. Pressure=175#

Serial #: 8354

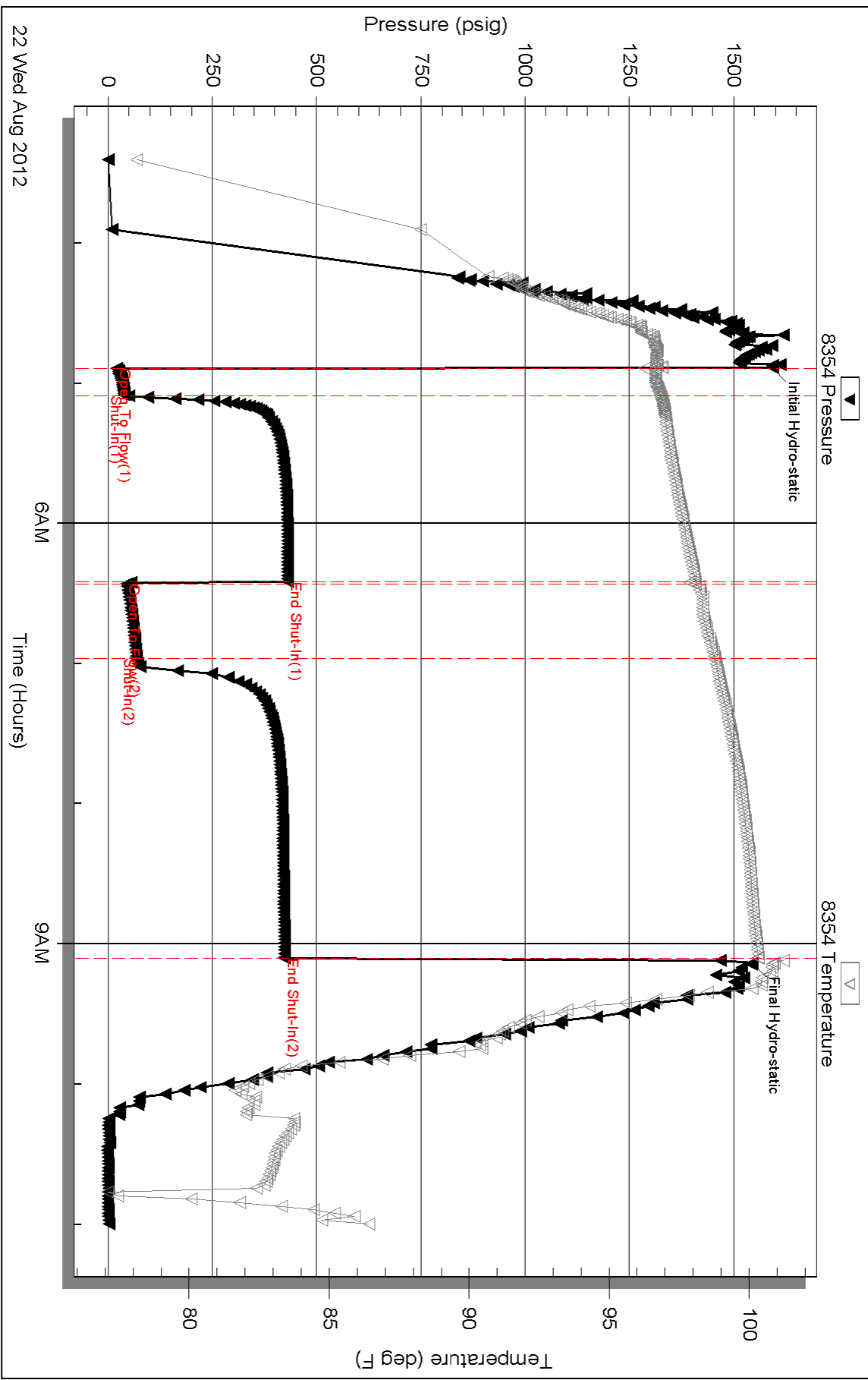
Inside

Samuel Gary Jr. & Associates, Inc.

Glassman #3-16

DST Test Number: 2

Pressure vs. Time



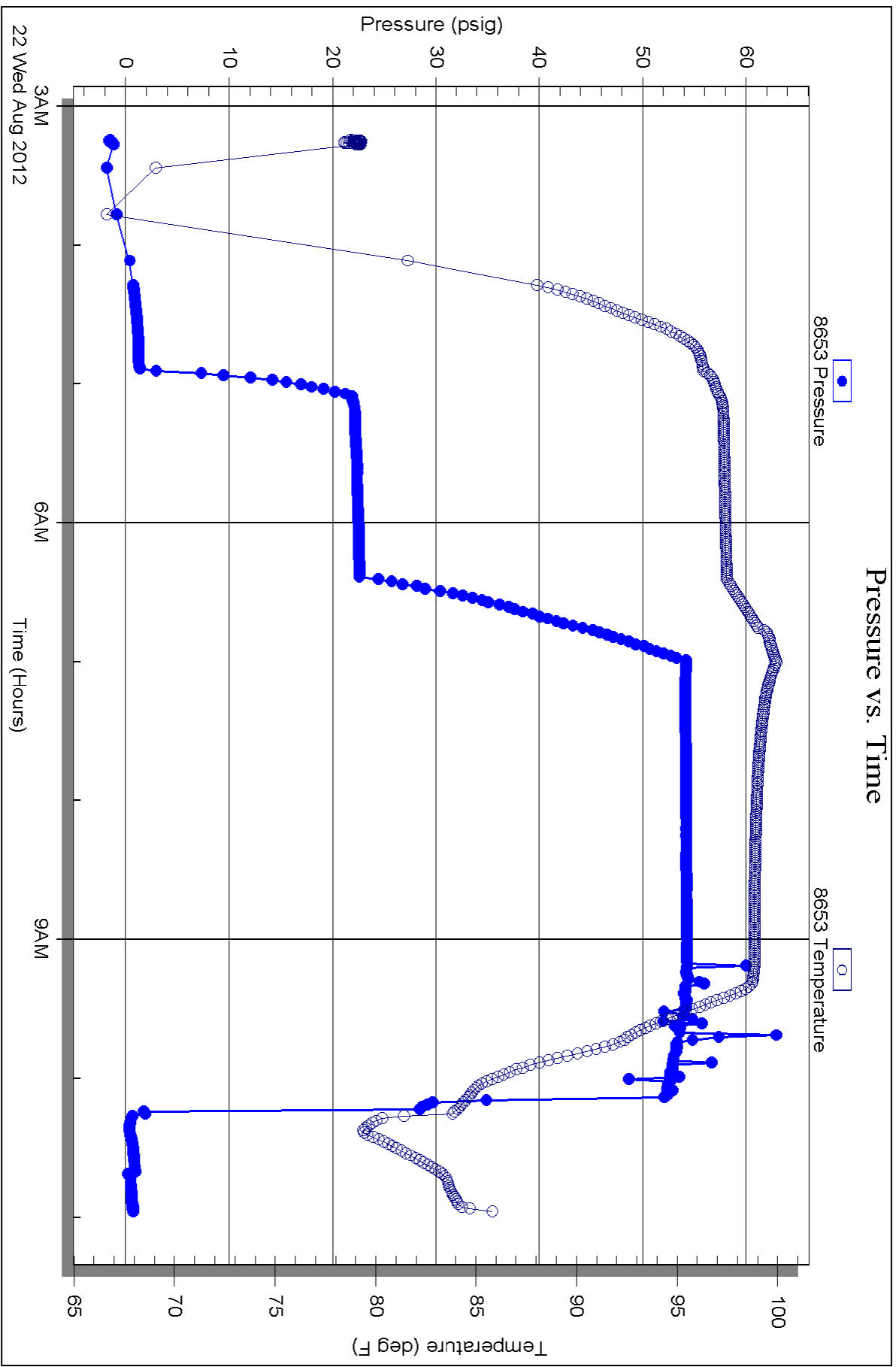
Serial #: 8653

Fluid

Samuel Gary Jr. & Associates, Inc.

Glassman #3-16

DST Test Number: 2



Triobite Testing, Inc

Ref. No: 49485

Printed: 2012.08.22 @ 12:01:38