



DRILL STEM TEST REPORT

Prepared For: **LB Exploration Inc**

2135 2ND RD Holyrood KS 67450 + 9021

ATTN: Steven

Strong #1

35- 32- 13 Barber

Start Date: 2012.01.15 @ 16:54:00

End Date: 2012.01.15 @ 23:06:00

Job Ticket #: 18728 DST #: 4

Superior Testers Enterprises LLC
PO Box 138 Great Bend KS 67530
1-800-792-6902

Printed: 2012.01.16 @ 05:02:10



DRILL STEM TEST REPORT

LB Exploration Inc
 2135 2ND RD Holyrood KS 67450 + 9021
 ATTN: Steven

35- 32- 13 Barber
Strong #1
 Job Ticket: 18728 **DST#: 4**
 Test Start: 2012.01.15 @ 16:54:00

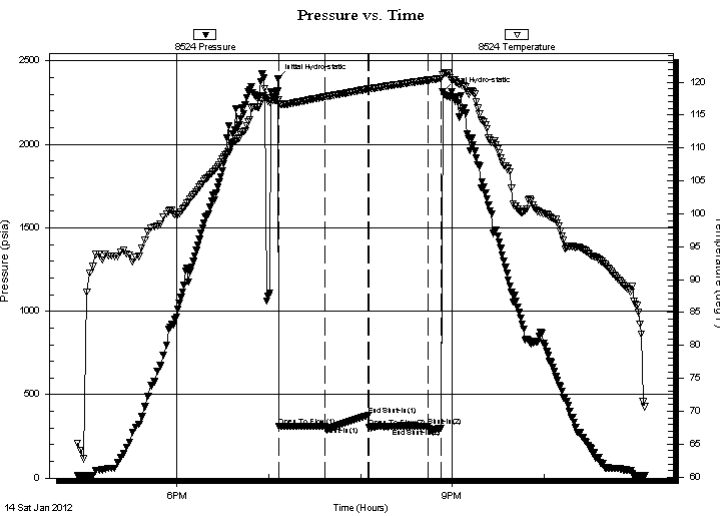
GENERAL INFORMATION:

Formation: **Mississippi**
 Deviated: No Whipstock: ft (KB)
 Time Tool Opened: 19:06:30
 Time Test Ended: 23:06:00
 Interval: **4604.00 ft (KB) To 4691.00 ft (KB) (TVD)**
 Total Depth: 4691.00 ft (KB) (TVD)
 Hole Diameter: 7.88 inches Hole Condition: Fair
 Test Type: Conventional Bottom Hole (Initial)
 Tester: Jared Scheck
 Unit No: 3320-80-Pratt
 Reference Elevations: 1692.00 ft (KB)
 1682.00 ft (CF)
 KB to GR/CF: 10.00 ft

Serial #: 8524

Press @ RunDepth: 312.59 psia @ ft (KB) Capacity: 5000.00 psia
 Start Date: 2012.01.14 End Date: 2012.01.14 Last Calib.: 2012.01.15
 Start Time: 16:54:00 End Time: 23:06:00 Time On Btm: 2012.01.14 @ 19:06:00
 Time Off Btm: 2012.01.14 @ 20:53:30

TEST COMMENT: 1st Opening 30 Minutes-Very weak blow built 1/2 inch into water and died off
 1st Shut-in 30 Minutes-No blow back
 2nd Opening 40 Minutes-No blow flushed tool weak surge did not build
 2nd Shut-in 10 Minutes-No blow back



PRESSURE SUMMARY

Time (Min.)	Pressure (psia)	Temp (deg F)	Annotation
0	2393.47	117.31	Initial Hydro-static
1	309.26	116.77	Open To Flow (1)
31	309.45	117.77	Shut-In(1)
59	374.54	118.93	End Shut-In(1)
60	302.56	118.95	Open To Flow (2)
98	312.59	120.31	Shut-In(2)
107	300.60	120.58	End Shut-In(2)
108	2315.45	121.19	Final Hydro-static

Recovery

Length (ft)	Description	Volume (bbl)
480.00	Mud	6.73

Gas Rates

Choke (inches)	Pressure (psia)	Gas Rate (Mcf/d)



DRILL STEM TEST REPORT

LB Exploration Inc
 2135 2ND RD Holyrood KS 67450 + 9021
 ATTN: Steven

35- 32- 13 Barber
Strong #1
 Job Ticket: 18728 **DST#: 4**
 Test Start: 2012.01.15 @ 16:54:00

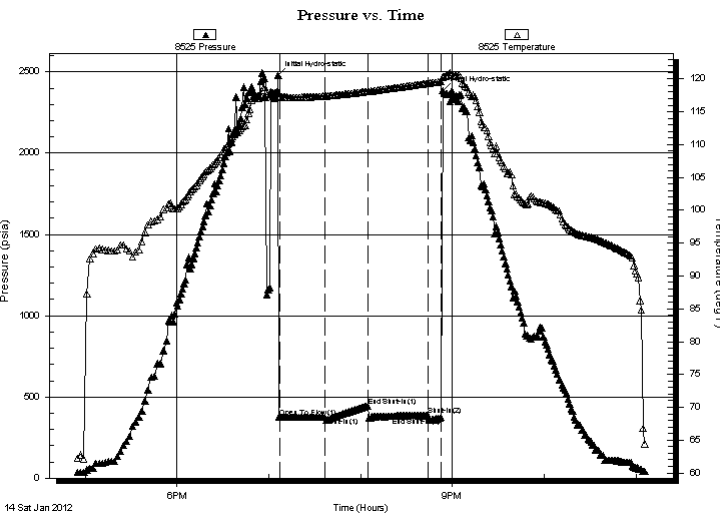
GENERAL INFORMATION:

Formation: **Mississippi**
 Deviated: No Whipstock: ft (KB)
 Time Tool Opened: 19:06:30
 Time Test Ended: 23:06:00
Interval: 4604.00 ft (KB) To 4691.00 ft (KB) (TVD)
 Total Depth: 4691.00 ft (KB) (TVD)
 Hole Diameter: 7.88 inches Hole Condition: Fair
 Test Type: Conventional Bottom Hole (Initial)
 Tester: Jared Scheck
 Unit No: 3320-80-Pratt
 Reference Elevations: 1692.00 ft (KB)
 1682.00 ft (CF)
 KB to GR/CF: 10.00 ft

Serial #: 8525

Press @ RunDepth: 373.44 psia @ ft (KB) Capacity: 5000.00 psia
 Start Date: 2012.01.14 End Date: 2012.01.14 Last Calib.: 2012.01.15
 Start Time: 16:54:00 End Time: 23:06:00 Time On Btm: 2012.01.14 @ 19:06:00
 Time Off Btm: 2012.01.14 @ 20:53:30

TEST COMMENT: 1st Opening 30 Minutes-Very weak blow built 1/2 inch into water and died off
 1st Shut-in 30 Minutes-No blow back
 2nd Opening 40 Minutes-No blow flushed tool weak surge did not build
 2nd Shut-in 10 Minutes-No blow back



PRESSURE SUMMARY

Time (Min.)	Pressure (psia)	Temp (deg F)	Annotation
0	2478.20	117.98	Initial Hydro-static
1	374.63	117.33	Open To Flow (1)
31	376.12	117.38	Shut-In(1)
59	444.71	118.10	End Shut-In(1)
98	384.83	119.32	Shut-In(2)
107	373.44	119.58	End Shut-In(2)
108	2386.55	120.26	Final Hydro-static

Recovery

Length (ft)	Description	Volume (bbl)
480.00	Mud	6.73

Gas Rates

Choke (inches)	Pressure (psia)	Gas Rate (Mcf/d)



DRILL STEM TEST REPORT

TOOL DIAGRAM

LB Exploration Inc
 2135 2ND RD Holyrood KS 67450 + 9021
 ATTN: Steven

35- 32- 13 Barber
Strong #1
 Job Ticket: 18728 **DST#: 4**
 Test Start: 2012.01.15 @ 16:54:00

Tool Information

Drill Pipe:	Length: 4615.00 ft	Diameter: 3.80 inches	Volume: 64.74 bbl	Tool Weight: 1000.00 lb
Heavy Wt. Pipe:	Length: 0.00 ft	Diameter: 0.00 inches	Volume: 0.00 bbl	Weight set on Packer: 20000.00 lb
Drill Collar:	Length: 0.00 ft	Diameter: 0.00 inches	Volume: 0.00 bbl	Weight to Pull Loose: 75000.00 lb
			<u>Total Volume: 64.74 bbl</u>	Tool Chased 0.00 ft
Drill Pipe Above KB:	31.00 ft			String Weight: Initial 68000.00 lb
Depth to Top Packer:	4604.00 ft			Final 68000.00 lb
Depth to Bottom Packer:	ft			
Interval between Packers:	87.00 ft			
Tool Length:	107.00 ft			
Number of Packers:	2	Diameter: 6.75 inches		

Tool Comments: Miss Run

Tool Description	Length (ft)	Serial No.	Position	Depth (ft)	Accum. Lengths
SHut-InTool	5.00		Inside	4589.00	
Hydraulic Tool	5.00			4594.00	
Packer	5.00			4599.00	20.00 Bottom Of Top Packer
Packer	5.00			4604.00	
Anchor	1.00			4605.00	
Change Over Sub	0.75			4605.75	
Drill Pipe	63.50		Outside	4669.25	
Change Over Sub	0.75		Outside	4670.00	
Anchor	16.00			4686.00	
Recorder	1.00	8524	Inside	4687.00	
Recorder	1.00	8525	Outside	4688.00	
Bullnose	3.00			4691.00	87.00 Bottom Packers & Anchor

Total Tool Length: 107.00



DRILL STEM TEST REPORT

FLUID SUMMARY

LB Exploration Inc
2135 2ND RD Holyrood KS 67450 + 9021
ATTN: Steven

35- 32- 13 Barber
Strong #1
Job Ticket: 18728 **DST#: 4**
Test Start: 2012.01.15 @ 16:54:00

Mud and Cushion Information

Mud Type: Gel Chem	Cushion Type:	Oil API:	deg API
Mud Weight: 9.00 lb/gal	Cushion Length: ft	Water Salinity:	ppm
Viscosity: 61.00 sec/qt	Cushion Volume: bbl		
Water Loss: 15.20 in ³	Gas Cushion Type:		
Resistivity: ohm.m	Gas Cushion Pressure: psia		
Salinity: 8000.00 ppm			
Filter Cake: 1.00 inches			

Recovery Information

Recovery Table

Length ft	Description	Volume bbl
480.00	Mud	6.733

Total Length: 480.00 ft Total Volume: 6.733 bbl
Num Fluid Samples: 0 Num Gas Bombs: 0 Serial #:
Laboratory Name: Laboratory Location:
Recovery Comments: Miss Run

