



**TRILOBITE  
TESTING, INC.**

# DRILL STEM TEST REPORT

Russell Oil Inc.  
P.O. Box 8050 Edmond OK  
73083  
ATTN: Kitt Noah

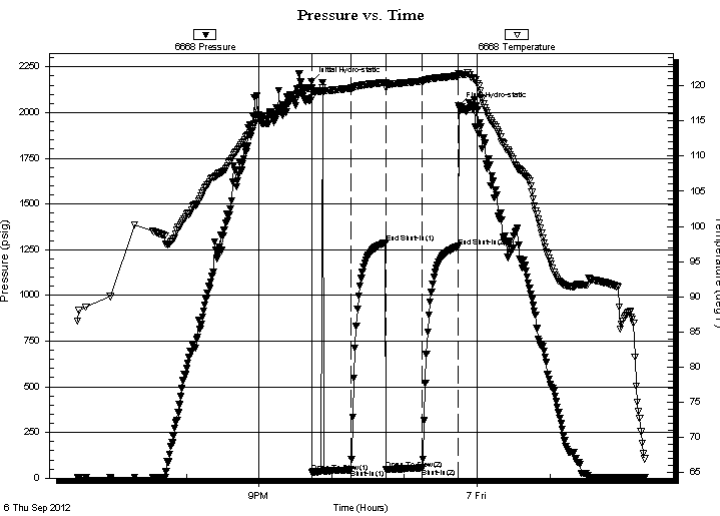
**6-11s-34w Logan Co**  
**Schertz A Unit 1 6**  
Job Ticket: 44432      **DST#: 1**  
Test Start: 2012.09.06 @ 18:30:15

## GENERAL INFORMATION:

Formation: **LKC H-I**  
Deviated: No Whipstock: ft (KB)  
Time Tool Opened: 21:43:45  
Time Test Ended: 02:18:15  
Interval: **4309.00 ft (KB) To 4370.00 ft (KB) (TVD)**  
Total Depth: 4370.00 ft (KB) (TVD)  
Hole Diameter: 7.88 inches Hole Condition: Poor  
Test Type: Conventional Bottom Hole (Initial)  
Tester: Mike Roberts  
Unit No: 65  
Reference Elevations: 3268.00 ft (KB)  
3258.00 ft (CF)  
KB to GR/CF: 10.00 ft

**Serial #: 6668      Inside**  
Press @ Run Depth: 56.33 psig @ 4311.00 ft (KB)      Capacity: 8000.00 psig  
Start Date: 2012.09.06      End Date: 2012.09.07      Last Calib.: 2012.09.07  
Start Time: 18:30:15      End Time: 02:18:15      Time On Btm: 2012.09.06 @ 21:43:30  
Time Off Btm: 2012.09.06 @ 23:44:45

**TEST COMMENT:** IF: No blow --- flushed tool-- no blow  
IS: No return blow  
FF: No blow  
FS: No return blow



## PRESSURE SUMMARY

Time (Min.)	Pressure (psig)	Temp (deg F)	Annotation
0	2168.83	119.67	Initial Hydro-static
1	32.74	118.26	Open To Flow (1)
32	45.53	119.63	Shut-In(1)
61	1288.75	120.47	End Shut-In(1)
62	47.76	119.66	Open To Flow (2)
92	56.33	120.65	Shut-In(2)
121	1267.58	121.39	End Shut-In(2)
122	2034.82	121.66	Final Hydro-static

## Recovery

Length (ft)	Description	Volume (bbl)
10.00	mud w ith oil spots	0.05

## Gas Rates

Choke (inches)	Pressure (psig)	Gas Rate (Mcf/d)



**TRILOBITE  
TESTING, INC.**

**DRILL STEM TEST REPORT**

**FLUID SUMMARY**

Russell Oil Inc.

**6-11s-34w Logan Co**

P.O. Box 8050 Edmond OK  
73083

**Schertz A Unit 1 6**

Job Ticket: 44432

**DST#: 1**

ATTN: Kitt Noah

Test Start: 2012.09.06 @ 18:30:15

**Mud and Cushion Information**

Mud Type: Gel Chem

Cushion Type:

Oil API:

0 deg API

Mud Weight: 9.00 lb/gal

Cushion Length:

ft

Water Salinity:

0 ppm

Viscosity: 54.00 sec/qt

Cushion Volume:

bbbl

Water Loss: 9.57 in<sup>3</sup>

Gas Cushion Type:

Resistivity: 0.00 ohm.m

Gas Cushion Pressure:

psig

Salinity: 7000.00 ppm

Filter Cake: 1.00 inches

**Recovery Information**

Recovery Table

Length ft	Description	Volume bbl
10.00	mud w ith oil spots	0.049

Total Length: 10.00 ft      Total Volume: 0.049 bbl

Num Fluid Samples: 0

Num Gas Bombs: 0

Serial #:

Laboratory Name:

Laboratory Location:

Recovery Comments:

# Pressure vs. Time

