



DRILL STEM TEST REPORT

Prepared For: **Carrie Exploration**

210 west 22nd Hays
Kansas 67601

ATTN: Ron Herold

Alan C-1

1-22s-10w-Reno

Start Date: 2012.12.01 @ 12:07:00

End Date: 2012.12.01 @ 17:31:00

Job Ticket #: 17703 DST #: 1

Superior Testers Enterprises LLC
PO Box 138 Great Bend KS 67530
1-800-792-6902

Printed: 2012.12.01 @ 05:50:03



DRILL STEM TEST REPORT

Carrie Exploration
 210 w est 22nd Hays
 Kansas 67601
 ATTN: Ron Herold

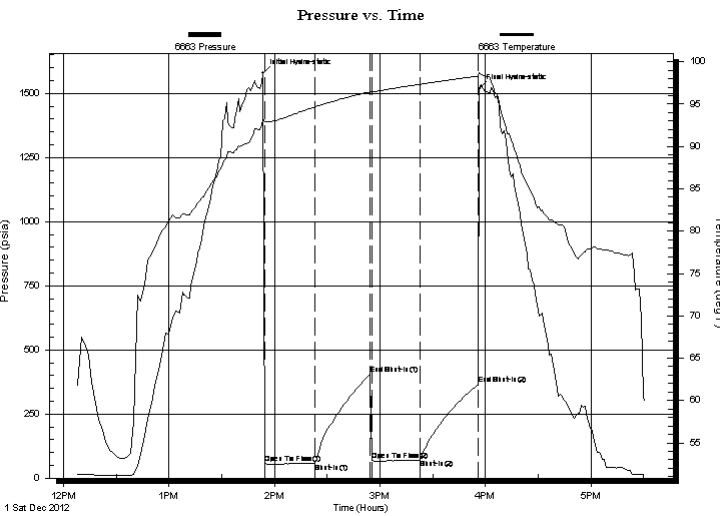
1-22s-10w-Reno
Alan C-1
 Job Ticket: 17703 **DST#: 1**
 Test Start: 2012.12.01 @ 12:07:00

GENERAL INFORMATION:

Formation: **Lansing A-B-C**
 Deviated: No Whipstock: ft (KB)
 Time Tool Opened: 13:54:30
 Time Test Ended: 17:31:00
 Interval: **3090.00 ft (KB) To 3139.00 ft (KB) (TVD)**
 Total Depth: 3139.00 ft (KB) (TVD)
 Hole Diameter: 7.88 inches Hole Condition: Fair
 Test Type: Conventional Bottom Hole (Initial)
 Tester: Dustin Ellis
 Unit No: 3315-Great Bend-80
 Reference Elevations: 1731.00 ft (KB)
 1724.00 ft (CF)
 KB to GR/CF: 7.00 ft

Serial #: 6663 Inside
 Press@RunDepth: 71.53 psia @ 3135.00 ft (KB) Capacity: 5000.00 psia
 Start Date: 2012.12.01 End Date: 2012.12.01 Last Calib.: 2012.12.01
 Start Time: 12:07:00 End Time: 17:31:00 Time On Btm: 2012.12.01 @ 13:53:30
 Time Off Btm: 2012.12.01 @ 15:56:30

TEST COMMENT: 1st Open 30 minutes Strong blow blew bottom bucket less than 1 minute.
 1st Shut in 30 minutes No blow back
 2nd Open 30 minutes Strong blow blew bottom instantly. Gas to surface 20 minutes.
 2nd Shut in 30 minutes No blow back.



PRESSURE SUMMARY

Time (Min.)	Pressure (psia)	Temp (deg F)	Annotation
0	1579.19	93.26	Initial Hydro-static
1	58.90	92.99	Open To Flow (1)
30	59.57	94.67	Shut-In(1)
61	406.88	96.44	End Shut-In(1)
62	68.59	96.40	Open To Flow (2)
90	71.53	97.35	Shut-In(2)
123	365.29	98.28	End Shut-In(2)
123	1518.68	98.75	Final Hydro-static

Recovery

Length (ft)	Description	Volume (bbl)
61.00	Oil cut mud	0.86
0.00		0.00

Gas Rates

	Choke (inches)	Pressure (psia)	Gas Rate (Mcf/d)



DRILL STEM TEST REPORT

Carrie Exploration
 210 w est 22nd Hays
 Kansas 67601
 ATTN: Ron Herold

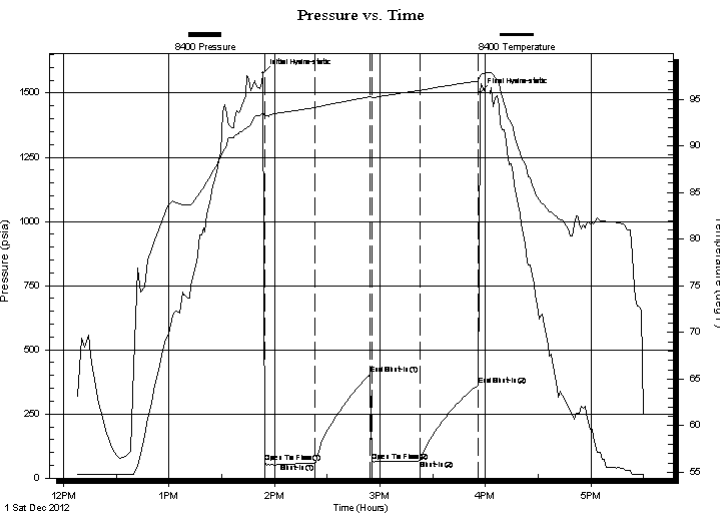
1-22s-10w-Reno
Alan C-1
 Job Ticket: 17703 **DST#: 1**
 Test Start: 2012.12.01 @ 12:07:00

GENERAL INFORMATION:

Formation: **Lansing A-B-C**
 Deviated: No Whipstock: ft (KB)
 Time Tool Opened: 13:54:30
 Time Test Ended: 17:31:00
 Interval: **3090.00 ft (KB) To 3139.00 ft (KB) (TVD)**
 Total Depth: 3139.00 ft (KB) (TVD)
 Hole Diameter: 7.88 inches Hole Condition: Fair
 Test Type: Conventional Bottom Hole (Initial)
 Tester: Dustin Ellis
 Unit No: 3315-Great Bend-80
 Reference Elevations: 1731.00 ft (KB)
 1724.00 ft (CF)
 KB to GR/CF: 7.00 ft

Serial #: 8400 Outside
 Press@RunDepth: 364.19 psia @ 3136.00 ft (KB) Capacity: 5000.00 psia
 Start Date: 2012.12.01 End Date: 2012.12.01 Last Calib.: 2012.12.01
 Start Time: 12:07:00 End Time: 17:31:00 Time On Btm: 2012.12.01 @ 13:53:30
 Time Off Btm: 2012.12.01 @ 15:57:00

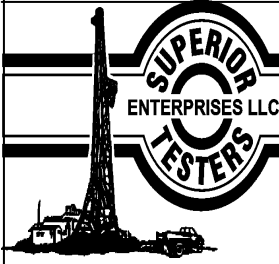
TEST COMMENT: 1st Open 30 minutes Strong blow blew bottom bucket less than 1 minute.
 1st Shut in 30 minutes No blow back
 2nd Open 30 minutes Strong blow blew bottom instantly. Gas to surface 20 minutes.
 2nd Shut in 30 minutes No blow back.



PRESSURE SUMMARY			
Time (Min.)	Pressure (psia)	Temp (deg F)	Annotation
0	1577.64	93.60	Initial Hydro-static
1	60.81	93.30	Open To Flow (1)
30	57.78	94.12	Shut-In(1)
61	405.55	95.27	End Shut-In(1)
62	66.39	95.18	Open To Flow (2)
90	68.25	95.96	Shut-In(2)
123	364.19	96.95	End Shut-In(2)
124	1503.50	97.38	Final Hydro-static

Recovery		
Length (ft)	Description	Volume (bbl)
61.00	Oil cut mud	0.86
0.00		0.00

Gas Rates			
	Choke (inches)	Pressure (psia)	Gas Rate (Mcf/d)



DRILL STEM TEST REPORT

TOOL DIAGRAM

Carrie Exploration

1-22s-10w-Reno

210 w est 22nd Hays
Kansas 67601

Alan C-1

Job Ticket: 17703

DST#: 1

ATTN: Ron Herold

Test Start: 2012.12.01 @ 12:07:00

Tool Information

Drill Pipe:	Length: 3093.00 ft	Diameter: 3.80 inches	Volume: 43.39 bbl	Tool Weight:	2000.00 lb
Heavy Wt. Pipe:	Length: 0.00 ft	Diameter: 0.00 inches	Volume: 0.00 bbl	Weight set on Packer:	20000.00 lb
Drill Collar:	Length: 0.00 ft	Diameter: 0.00 inches	Volume: 0.00 bbl	Weight to Pull Loose:	40000.00 lb
			<u>Total Volume: 43.39 bbl</u>	Tool Chased	0.00 ft
Drill Pipe Above KB:	23.00 ft			String Weight: Initial	33000.00 lb
Depth to Top Packer:	3090.00 ft			Final	33000.00 lb
Depth to Bottom Packer:	ft				
Interval between Packers:	49.00 ft				
Tool Length:	69.00 ft				
Number of Packers:	2	Diameter: 6.75 inches			

Tool Comments:

Tool Description

Tool Description	Length (ft)	Serial No.	Position	Depth (ft)	Accum. Lengths
Shut-In Tool	5.00			3075.00	
Hydraulic Tool	5.00			3080.00	
Packer	5.00			3085.00	20.00 Bottom Of Top Packer
Packer	5.00			3090.00	
Anchor	44.00			3134.00	
Recorder	1.00	6663	Inside	3135.00	
Recorder	1.00	8400	Outside	3136.00	
Bullnose	3.00			3139.00	49.00 Bottom Packers & Anchor

Total Tool Length: 69.00



DRILL STEM TEST REPORT

FLUID SUMMARY

Carrie Exploration

1-22s-10w-Reno

210 w est 22nd Hays
Kansas 67601

Alan C-1

Job Ticket: 17703

DST#: 1

ATTN: Ron Herold

Test Start: 2012.12.01 @ 12:07:00

Mud and Cushion Information

Mud Type: Gel Chem

Cushion Type:

Oil API:

deg API

Mud Weight: 9.00 lb/gal

Cushion Length:

ft

Water Salinity:

ppm

Viscosity: 49.00 sec/qt

Cushion Volume:

bbbl

Water Loss: 96.94 in³

Gas Cushion Type:

Resistivity: ohm.m

Gas Cushion Pressure:

psia

Salinity: 4000.00 ppm

Filter Cake: 1.00 inches

Recovery Information

Recovery Table

Length ft	Description	Volume bbl
61.00	Oil cut mud	0.856
0.00		0.000

Total Length: 61.00 ft Total Volume: 0.856 bbl

Num Fluid Samples: 0

Num Gas Bombs: 0

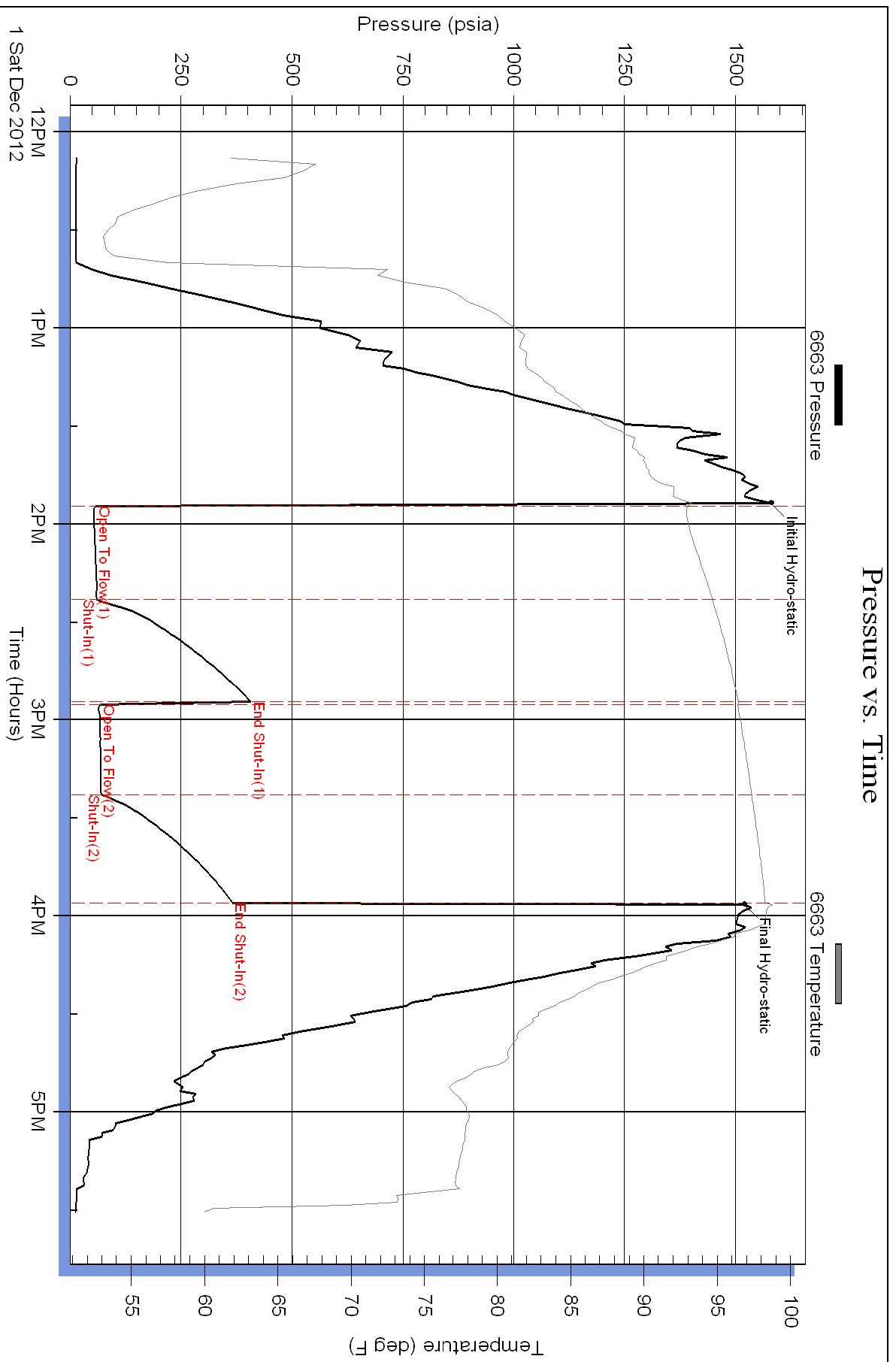
Serial #:

Laboratory Name:

Laboratory Location:

Recovery Comments:

Pressure vs. Time



Serial #: 8400

Outside Carrie Exploration

Alan C-1

DST Test Number: 1

