



TRILOBITE TESTING, INC.

DRILL STEM TEST REPORT

Pioneer Resources
 80 Windmill Drive
 Phillipsburg, KS. 67661
 ATTN: Cliff Ottaway

3-5s-18w-Phillips
Foundation #2
 Job Ticket: 48739 **DST#: 2**
 Test Start: 2012.11.27 @ 04:30:28

GENERAL INFORMATION:

Formation: **C-D**
 Deviated: No Whipstock: 0.00 ft (KB)
 Time Tool Opened: 07:00:43
 Time Test Ended: 11:37:28
 Interval: **3080.00 ft (KB) To 3120.00 ft (KB) (TVD)**
 Total Depth: 3120.00 ft (KB) (TVD)
 Hole Diameter: 7.80 inches Hole Condition: Good
 Test Type: Conventional Bottom Hole (Reset)
 Tester: Jason McLemore
 Unit No: 54
 Reference Elevations: 1881.00 ft (KB)
 1873.00 ft (CF)
 KB to GR/CF: 8.00 ft

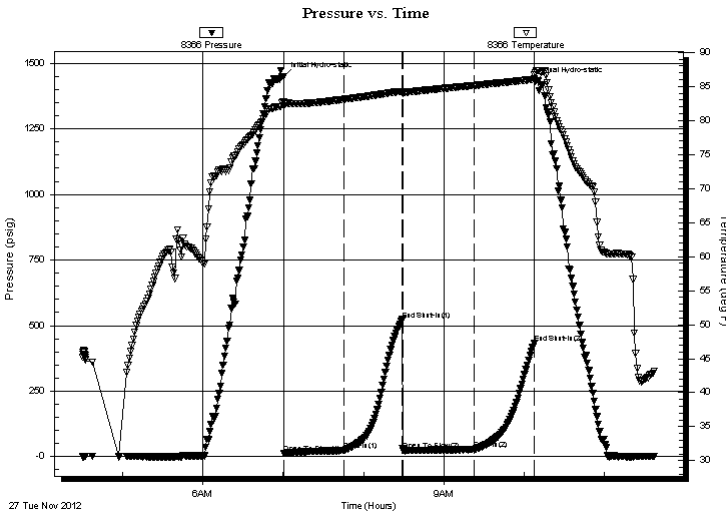
Serial #: 8366

Inside

Press @ Run Depth: 27.73 psig @ 3117.00 ft (KB) Capacity: 8000.00 psig
 Start Date: 2012.11.27 End Date: 2012.11.27 Last Calib.: 2012.11.27
 Start Time: 04:30:30 End Time: 11:37:28 Time On Btm: 2012.11.27 @ 07:00:13
 Time Off Btm: 2012.11.27 @ 10:07:43

TEST COMMENT: IFP-Weak Blow , Built to 1-1/4"
 ISI-Dead
 FFP-Weak Blow , Built to 1"
 FSI-Dead

PRESSURE SUMMARY



Time (Min.)	Pressure (psig)	Temp (deg F)	Annotation
0	1449.65	82.79	Initial Hydro-static
1	12.76	82.20	Open To Flow (1)
46	23.91	83.09	Shut-In(1)
89	522.78	84.27	End Shut-In(1)
90	23.80	84.13	Open To Flow (2)
143	27.73	85.12	Shut-In(2)
187	431.67	86.04	End Shut-In(2)
188	1431.47	86.70	Final Hydro-static

Recovery

Length (ft)	Description	Volume (bbl)
35.00	HOCM-65%O-35%M	0.22
5.00	Free Oil	0.07
0.00	50' Gas In Pipe	0.00

* Recovery from multiple tests

Gas Rates

Choke (inches)	Pressure (psig)	Gas Rate (Mcf/d)



**TRILOBITE
TESTING, INC.**

DRILL STEM TEST REPORT

FLUID SUMMARY

Pioneer Resources
80 Windmill Drive
Phillipsburg, KS. 67661
ATTN: Cliff Ottaway

3-5s-18w-Phillips
Foundation #2
Job Ticket: 48739 **DST#: 2**
Test Start: 2012.11.27 @ 04:30:28

Mud and Cushion Information

Mud Type: Gel Chem	Cushion Type:	Oil API: 38 deg API
Mud Weight: 9.00 lb/gal	Cushion Length: ft	Water Salinity: ppm
Viscosity: 55.00 sec/qt	Cushion Volume: bbl	
Water Loss: 7.79 in ³	Gas Cushion Type:	
Resistivity: ohm.m	Gas Cushion Pressure: psig	
Salinity: 900.00 ppm		
Filter Cake: inches		

Recovery Information

Recovery Table

Length ft	Description	Volume bbl
35.00	HOCM-65%O-35%M	0.218
5.00	Free Oil	0.070
0.00	50' Gas In Pipe	0.000

Total Length: 40.00 ft Total Volume: 0.288 bbl
 Num Fluid Samples: 0 Num Gas Bombs: 0 Serial #:
 Laboratory Name: Laboratory Location:
 Recovery Comments:

Pressure vs. Time

