



**TRILOBITE
TESTING, INC.**

DRILL STEM TEST REPORT

Pioneer Resources
80 Windmill Drive
Phillipsburg, KS. 67661
ATTN: Cliff Ottaway

3-5s-18w-Phillips

Foundation #2

Job Ticket: 48741

DST#: 4

Test Start: 2012.11.28 @ 04:54:07

GENERAL INFORMATION:

Formation: **G**
 Deviated: No Whipstock: 0.00 ft (KB)
 Time Tool Opened: 06:54:07
 Time Test Ended: 11:59:52
 Interval: **3144.00 ft (KB) To 3164.00 ft (KB) (TVD)**
 Total Depth: 3164.00 ft (KB) (TVD)
 Hole Diameter: 7.80 inches Hole Condition: Good
 Test Type: Conventional Bottom Hole (Reset)
 Tester: Jason McLemore
 Unit No: 54
 Reference Elevations: 1881.00 ft (KB)
 1873.00 ft (CF)
 KB to GR/CF: 8.00 ft

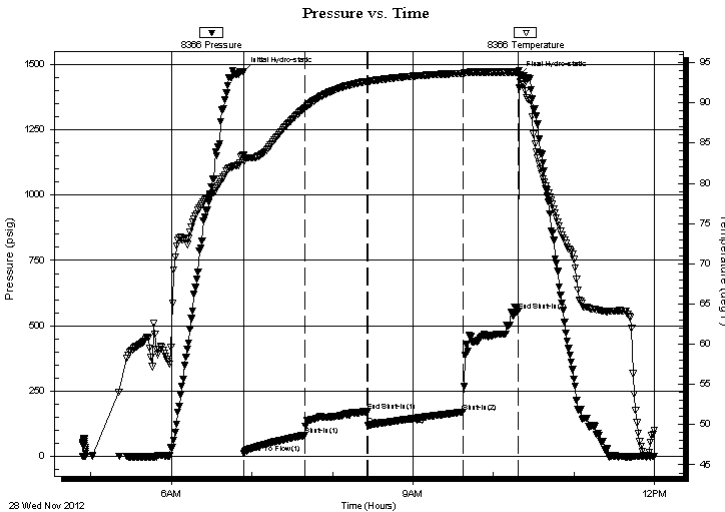
Serial #: 8366

Inside

Press @ Run Depth: 171.01 psig @ 3146.00 ft (KB) Capacity: 8000.00 psig
 Start Date: 2012.11.28 End Date: 2012.11.28 Last Calib.: 2012.11.28
 Start Time: 04:54:09 End Time: 11:59:52 Time On Btm: 2012.11.28 @ 06:53:37
 Time Off Btm: 2012.11.28 @ 10:19:07

TEST COMMENT: IFP-Fair Blow , Built to 7"
 ISI-Blow back Built to 4"
 FFP-Weak Blow , Built to 4"
 FSI-Blow back Built to 1/4"

PRESSURE SUMMARY



Time (Min.)	Pressure (psig)	Temp (deg F)	Annotation
0	1473.16	83.50	Initial Hydro-static
1	14.05	82.77	Open To Flow (1)
46	82.29	89.37	Shut-In(1)
93	172.44	92.69	End Shut-In(1)
93	120.00	92.67	Open To Flow (2)
164	171.01	93.67	Shut-In(2)
205	556.26	93.82	End Shut-In(2)
206	1457.92	93.49	Final Hydro-static

Recovery

Length (ft)	Description	Volume (bbl)
330.00	Gassy Water W/Oil Scum 10%G-85%W	4.36
20.00	Free Oil	0.28
0.00	70' Gas In Pipe	0.00

* Recovery from multiple tests

Gas Rates

Choke (inches)	Pressure (psig)	Gas Rate (Mcf/d)



**TRILOBITE
TESTING, INC.**

DRILL STEM TEST REPORT

FLUID SUMMARY

Pioneer Resources

3-5s-18w-Phillips

80 Windmill Drive
Phillipsburg, KS. 67661

Foundation #2

Job Ticket: 48741

DST#: 4

ATTN: Cliff Ottaway

Test Start: 2012.11.28 @ 04:54:07

Mud and Cushion Information

Mud Type: Gel Chem

Cushion Type:

Oil API:

38 deg API

Mud Weight: 9.00 lb/gal

Cushion Length:

ft

Water Salinity:

50000 ppm

Viscosity: 46.00 sec/qt

Cushion Volume:

bbbl

Water Loss: 7.60 in³

Gas Cushion Type:

Resistivity: ohm.m

Gas Cushion Pressure:

psig

Salinity: 1000.00 ppm

Filter Cake: inches

Recovery Information

Recovery Table

Length ft	Description	Volume bbbl
330.00	Gassy Water W/Oil Scum 10%G-85%W-5%N	4.356
20.00	Free Oil	0.281
0.00	70' Gas In Pipe	0.000

Total Length: 350.00 ft

Total Volume: 4.637 bbl

Num Fluid Samples: 0

Num Gas Bombs: 0

Serial #:

Laboratory Name:

Laboratory Location:

Recovery Comments:

