



DRILL STEM TEST REPORT

Prepared For: **Pioneer Resources**

80 Windmill Dr
Phillipsburg , KS 67661

ATTN: Steve Murphy

Binkley Unit #1

6-14s-31w Gove,KS

Start Date: 2012.10.30 @ 17:55:46

End Date: 2012.10.30 @ 22:40:46

Job Ticket #: 49876 DST #: 1

Trilobite Testing, Inc
PO Box 362 Hays, KS 67601
ph: 785-625-4778 fax: 785-625-5620

Printed: 2012.11.13 @ 11:41:35



TRILOBITE TESTING, INC.

DRILL STEM TEST REPORT

Pioneer Resources
 80 Windmill Dr
 Phillipsburg, KS 67661
 ATTN: Steve Murphy

6-14s-31w Gove, KS

Binkley Unit #1

Job Ticket: 49876

DST#: 1

Test Start: 2012.10.30 @ 17:55:46

GENERAL INFORMATION:

Formation: **H**
 Deviated: No Whipstock: ft (KB)
 Time Tool Opened: 19:56:16
 Time Test Ended: 22:40:46
 Interval: **4176.00 ft (KB) To 4210.00 ft (KB) (TVD)**
 Total Depth: 4210.00 ft (KB) (TVD)
 Hole Diameter: 7.88 inches Hole Condition: Fair
 Test Type: Conventional Bottom Hole (Initial)
 Tester: Shane McBride
 Unit No: 55
 Reference Elevations: 2991.00 ft (KB)
 2986.00 ft (CF)
 KB to GR/CF: 5.00 ft

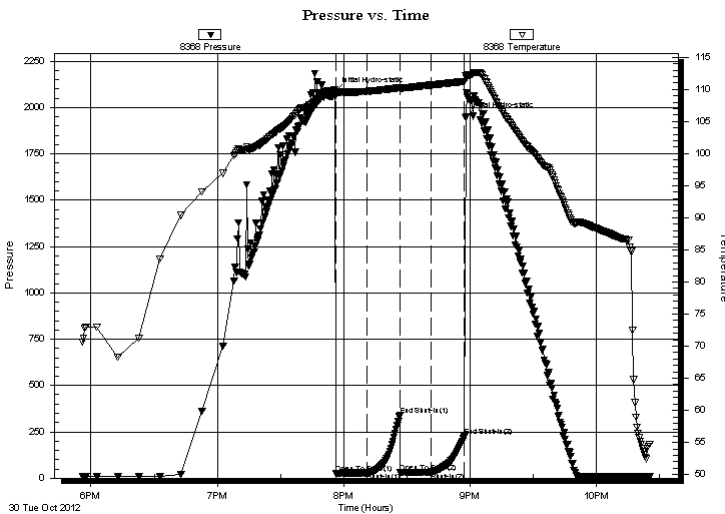
Serial #: 8368

Outside

Press @ Run Depth: 32.98 psig @ 4177.00 ft (KB)
 Start Date: 2012.10.30 End Date: 2012.10.30
 Start Time: 17:56:01 End Time: 22:25:46
 Capacity: 8000.00 psig
 Last Calib.: 2012.10.30
 Time On Btm: 2012.10.30 @ 19:56:01
 Time Off Btm: 2012.10.30 @ 20:58:16

TEST COMMENT: 1/4" blow
 No return
 No blow
 No return

PRESSURE SUMMARY



Time (Min.)	Pressure (psig)	Temp (deg F)	Annotation
0	2084.78	109.98	Initial Hydro-static
1	26.22	109.02	Open To Flow (1)
16	29.02	109.68	Shut-In(1)
31	340.97	110.26	End Shut-In(1)
31	31.17	110.06	Open To Flow (2)
46	32.98	110.66	Shut-In(2)
62	225.49	111.25	End Shut-In(2)
63	1948.69	111.82	Final Hydro-static

Recovery

Length (ft)	Description	Volume (bbl)
3.00	mud 100% m w / oil spots on top	0.01

Gas Rates

Choke (inches)	Pressure (psig)	Gas Rate (Mcf/d)



**TRILOBITE
TESTING, INC.**

DRILL STEM TEST REPORT

TOOL DIAGRAM

Pioneer Resources
80 Windmill Dr
Phillipsburg, KS 67661
ATTN: Steve Murphy

6-14s-31w Gove,KS
Binkley Unit #1
Job Ticket: 49876 **DST#: 1**
Test Start: 2012.10.30 @ 17:55:46

Tool Information

Drill Pipe:	Length: 4049.00 ft	Diameter: 3.80 inches	Volume: 56.80 bbl	Tool Weight: 1500.00 lb
Heavy Wt. Pipe:	Length: 0.00 ft	Diameter: 0.00 inches	Volume: 0.00 bbl	Weight set on Packer: 25000.00 lb
Drill Collar:	Length: 124.00 ft	Diameter: 2.25 inches	Volume: 0.61 bbl	Weight to Pull Loose: 75000.00 lb
			<u>Total Volume: 57.41 bbl</u>	Tool Chased 0.00 ft
Drill Pipe Above KB:	24.00 ft			String Weight: Initial 62000.00 lb
Depth to Top Packer:	4176.00 ft			Final 62000.00 lb
Depth to Bottom Packer:	ft			
Interval between Packers:	34.00 ft			
Tool Length:	61.00 ft			
Number of Packers:	2	Diameter: 6.75 inches		

Tool Comments:

Tool Description	Length (ft)	Serial No.	Position	Depth (ft)	Accum. Lengths
-------------------------	--------------------	-------------------	-----------------	-------------------	-----------------------

Change Over Sub	1.00			4150.00	
Shut In Tool	5.00			4155.00	
Hydraulic tool	5.00			4160.00	
Jars	5.00			4165.00	
Safety Joint	2.00			4167.00	
Packer	5.00			4172.00	27.00 Bottom Of Top Packer
Packer	4.00			4176.00	
Stubb	1.00			4177.00	
Recorder	0.00	6667	Inside	4177.00	
Recorder	0.00	8368	Outside	4177.00	
Perforations	28.00			4205.00	
Bullnose	5.00			4210.00	34.00 Bottom Packers & Anchor

Total Tool Length: 61.00



**TRILOBITE
TESTING, INC.**

DRILL STEM TEST REPORT

FLUID SUMMARY

Pioneer Resources
80 Windmill Dr
Phillipsburg, KS 67661
ATTN: Steve Murphy

6-14s-31w Gove,KS
Binkley Unit #1
Job Ticket: 49876 **DST#: 1**
Test Start: 2012.10.30 @ 17:55:46

Mud and Cushion Information

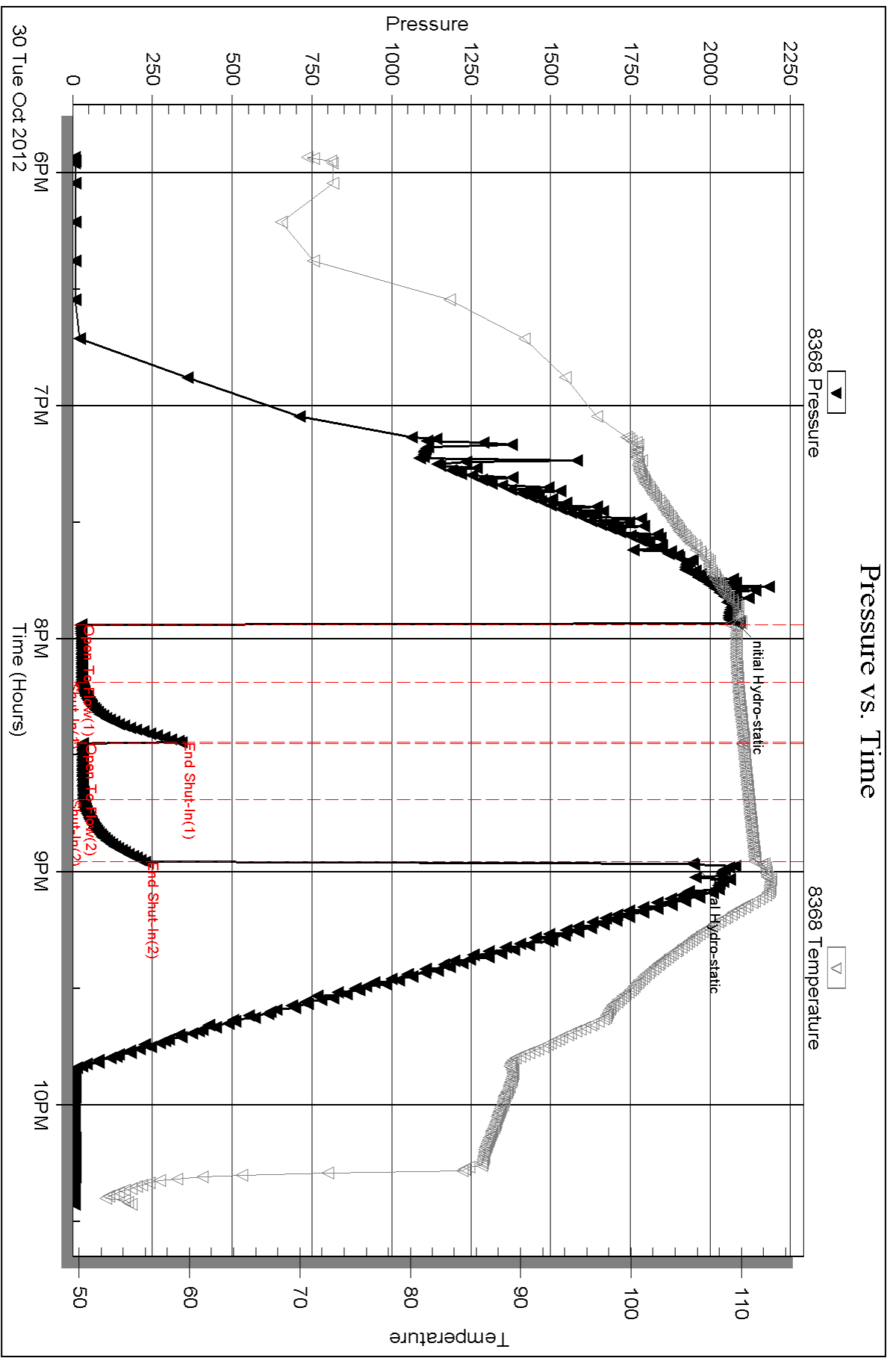
Mud Type: Gel Chem	Cushion Type:	Oil API:	0 deg API
Mud Weight: 10.00 lb/gal	Cushion Length: ft	Water Salinity:	0 ppm
Viscosity: 50.00 sec/qt	Cushion Volume: bbl		
Water Loss: 7.57 in ³	Gas Cushion Type:		
Resistivity: 0.00 ohm.m	Gas Cushion Pressure: psig		
Salinity: 3900.00 ppm			
Filter Cake: 1.00 inches			

Recovery Information

Recovery Table

Length ft	Description	Volume bbl
3.00	mud 100% m w / oil spots on top	0.015

Total Length: 3.00 ft Total Volume: 0.015 bbl
 Num Fluid Samples: 0 Num Gas Bombs: 0 Serial #:
 Laboratory Name: Laboratory Location:
 Recovery Comments:



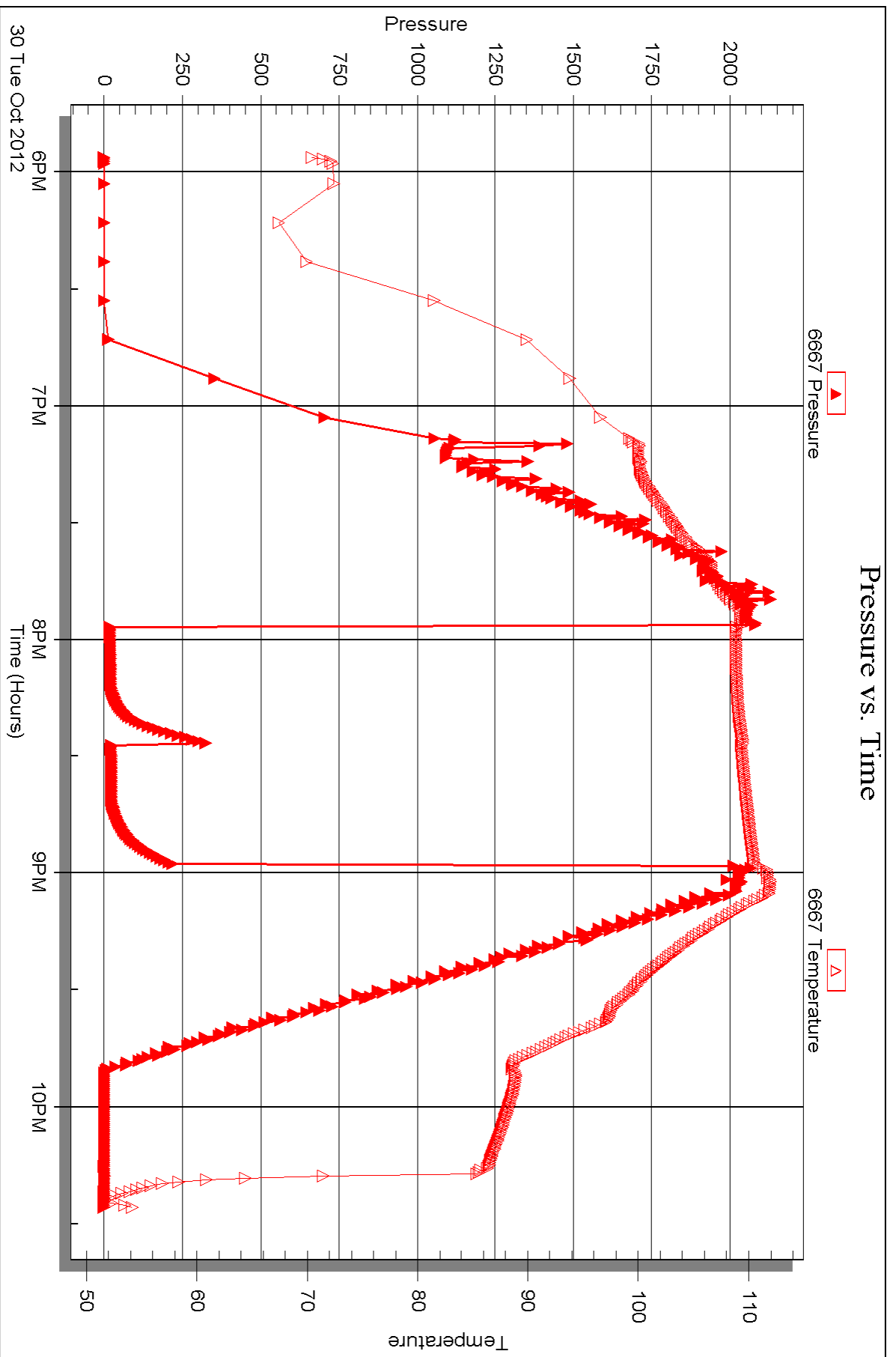
Serial #: 6667

Inside

Pioneer Resources

Binkey Unit #1

DST Test Number: 1





DRILL STEM TEST REPORT

Prepared For: **Pioneer Resources**

80 Windmill Dr
Phillipsburg , KS 67661

ATTN: Steve Murphy

Binkley Unit #1

6-14s-31w Gove,KS

Start Date: 2012.11.01 @ 02:15:18

End Date: 2012.11.01 @ 07:10:48

Job Ticket #: 49877 DST #: 2

Trilobite Testing, Inc
PO Box 362 Hays, KS 67601
ph: 785-625-4778 fax: 785-625-5620

Printed: 2012.11.13 @ 11:40:35



**TRILOBITE
TESTING, INC.**

DRILL STEM TEST REPORT

Pioneer Resources
80 Windmill Dr
Phillipsburg, KS 67661
ATTN: Steve Murphy

6-14s-31w Gove, KS

Binkley Unit #1

Job Ticket: 49877

DST#: 2

Test Start: 2012.11.01 @ 02:15:18

GENERAL INFORMATION:

Formation: **Pawnee**
 Deviated: No Whipstock: ft (KB)
 Time Tool Opened: 04:05:48
 Time Test Ended: 07:10:48
 Interval: **4474.00 ft (KB) To 4506.00 ft (KB) (TVD)**
 Total Depth: 4506.00 ft (KB) (TVD)
 Hole Diameter: 7.88 inches Hole Condition: Fair
 Test Type: Conventional Bottom Hole (Reset)
 Tester: Shane McBride
 Unit No: 55
 Reference Elevations: 2991.00 ft (KB)
 2986.00 ft (CF)
 KB to GR/CF: 5.00 ft

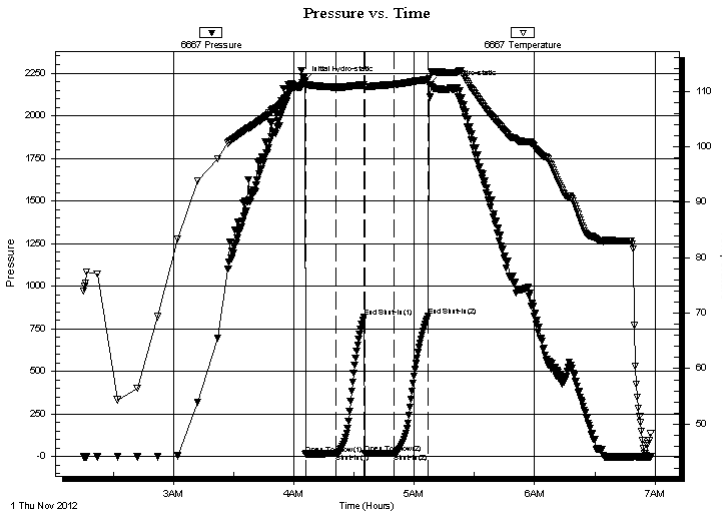
Serial #: 6667

Inside

Press @ Run Depth: 21.34 psig @ 4475.00 ft (KB) Capacity: 8000.00 psig
 Start Date: 2012.11.01 End Date: 2012.11.01 Last Calib.: 2012.11.01
 Start Time: 02:15:18 End Time: 06:57:48 Time On Btm: 2012.11.01 @ 04:05:33
 Time Off Btm: 2012.11.01 @ 05:07:18

TEST COMMENT: Weak surface blow
 No return
 No blow
 No return

PRESSURE SUMMARY



Time (Min.)	Pressure (psig)	Temp (deg F)	Annotation
0	2204.40	111.63	Initial Hydro-static
1	15.99	111.16	Open To Flow (1)
16	18.49	110.72	Shut-In(1)
30	820.93	111.13	End Shut-In(1)
30	19.55	110.84	Open To Flow (2)
45	21.34	111.22	Shut-In(2)
62	824.45	112.07	End Shut-In(2)
62	2182.92	112.30	Final Hydro-static

Recovery

Length (ft)	Description	Volume (bbl)
1.00	mud 100% m	0.00

* Recovery from multiple tests

Gas Rates

Choke (inches)	Pressure (psig)	Gas Rate (Mcf/d)



**TRILOBITE
TESTING, INC.**

DRILL STEM TEST REPORT

TOOL DIAGRAM

Pioneer Resources
80 Windmill Dr
Phillipsburg, KS 67661
ATTN: Steve Murphy

6-14s-31w Gove,KS
Binkley Unit #1
Job Ticket: 49877 **DST#: 2**
Test Start: 2012.11.01 @ 02:15:18

Tool Information

Drill Pipe:	Length: 4333.00 ft	Diameter: 3.80 inches	Volume: 60.78 bbl	Tool Weight: 1500.00 lb
Heavy Wt. Pipe:	Length: 0.00 ft	Diameter: 0.00 inches	Volume: 0.00 bbl	Weight set on Packer: 25000.00 lb
Drill Collar:	Length: 124.00 ft	Diameter: 2.25 inches	Volume: 0.61 bbl	Weight to Pull Loose: 82000.00 lb
			<u>Total Volume: 61.39 bbl</u>	Tool Chased 0.00 ft
Drill Pipe Above KB:	10.00 ft			String Weight: Initial 64000.00 lb
Depth to Top Packer:	4474.00 ft			Final 64000.00 lb
Depth to Bottom Packer:	ft			
Interval between Packers:	32.00 ft			
Tool Length:	59.00 ft			
Number of Packers:	2	Diameter: 6.75 inches		

Tool Comments:

Tool Description	Length (ft)	Serial No.	Position	Depth (ft)	Accum. Lengths
-------------------------	--------------------	-------------------	-----------------	-------------------	-----------------------

Change Over Sub	1.00			4448.00	
Shut In Tool	5.00			4453.00	
Hydraulic tool	5.00			4458.00	
Jars	5.00			4463.00	
Safety Joint	2.00			4465.00	
Packer	5.00			4470.00	27.00 Bottom Of Top Packer
Packer	4.00			4474.00	
Stubb	1.00			4475.00	
Recorder	0.00	6667	Inside	4475.00	
Recorder	0.00	8368	Outside	4475.00	
Perforations	26.00			4501.00	
Bullnose	5.00			4506.00	32.00 Bottom Packers & Anchor

Total Tool Length: 59.00



**TRILOBITE
TESTING, INC.**

DRILL STEM TEST REPORT

FLUID SUMMARY

Pioneer Resources
80 Windmill Dr
Phillipsburg, KS 67661
ATTN: Steve Murphy

6-14s-31w Gove,KS
Binkley Unit #1
Job Ticket: 49877 **DST#: 2**
Test Start: 2012.11.01 @ 02:15:18

Mud and Cushion Information

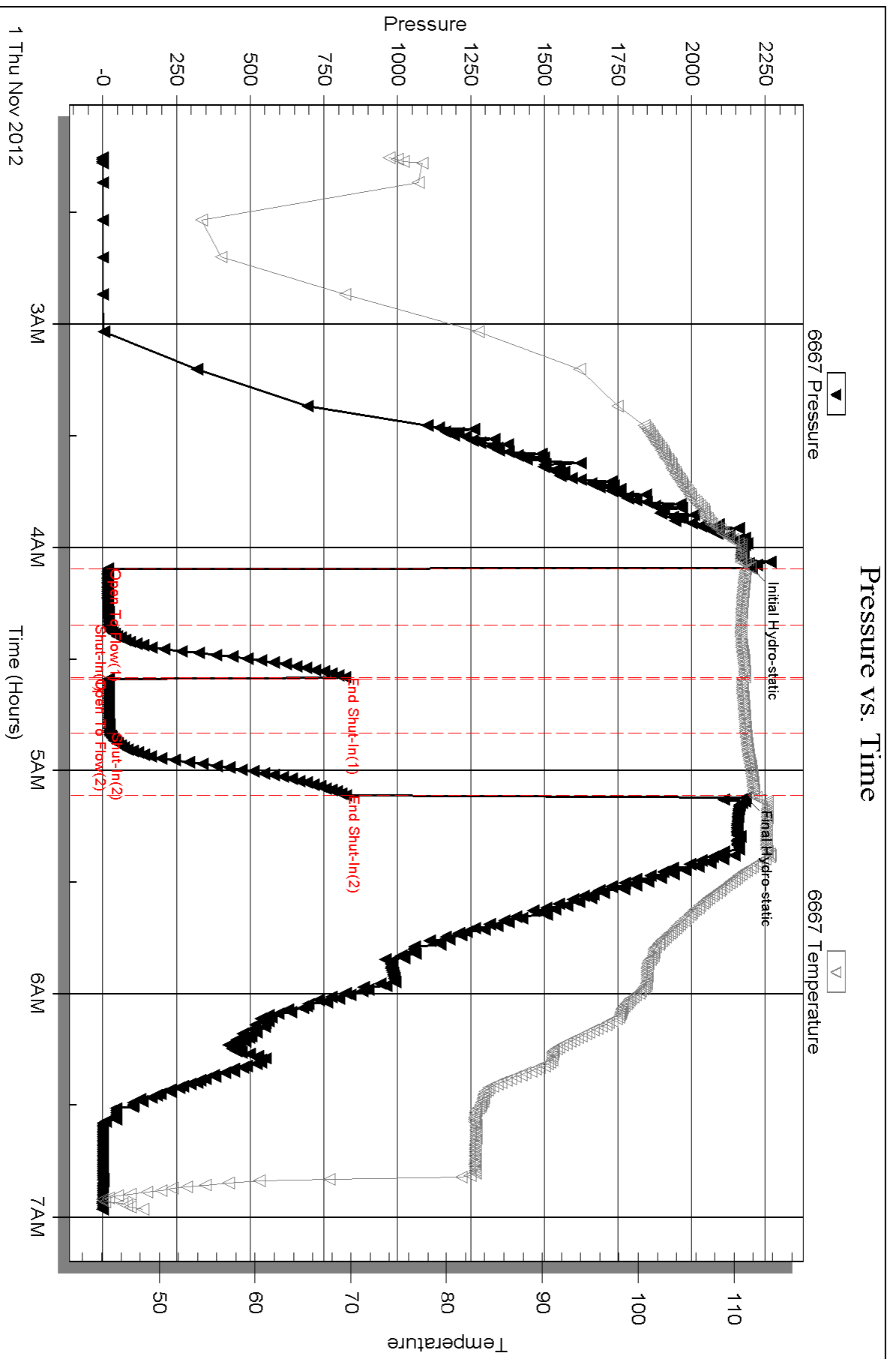
Mud Type:	Gel Chem	Cushion Type:		Oil API:	0 deg API
Mud Weight:	9.00 lb/gal	Cushion Length:	ft	Water Salinity:	0 ppm
Viscosity:	55.00 sec/qt	Cushion Volume:	bbbl		
Water Loss:	6.98 in ³	Gas Cushion Type:			
Resistivity:	0.00 ohm.m	Gas Cushion Pressure:	psig		
Salinity:	3800.00 ppm				
Filter Cake:	1.00 inches				

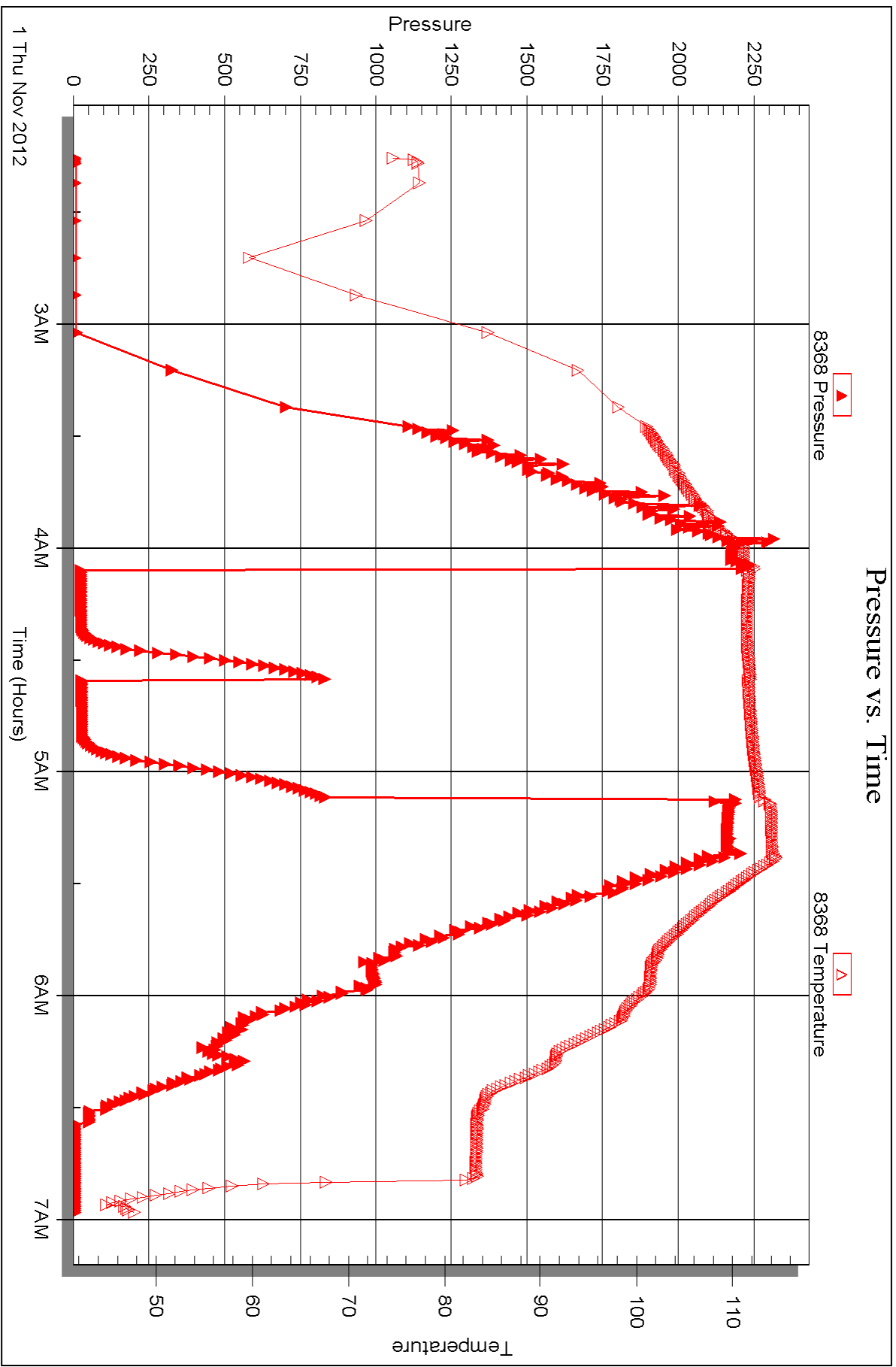
Recovery Information

Recovery Table

Length ft	Description	Volume bbbl
1.00	mud 100%m	0.005

Total Length: 1.00 ft Total Volume: 0.005 bbl
 Num Fluid Samples: 0 Num Gas Bombs: 0 Serial #:
 Laboratory Name: Laboratory Location:
 Recovery Comments:







DRILL STEM TEST REPORT

Prepared For: **Pioneer Resources**

80 Windmill Dr
Phillipsburg , KS 67661

ATTN: Steve Murphy

Binkley Unit #1

6-14s-31w Gove,KS

Start Date: 2012.11.01 @ 20:30:43

End Date: 2012.11.02 @ 02:03:28

Job Ticket #: 49878 DST #: 3

Trilobite Testing, Inc
PO Box 362 Hays, KS 67601
ph: 785-625-4778 fax: 785-625-5620

Printed: 2012.11.13 @ 11:39:50



**TRILOBITE
TESTING, INC.**

DRILL STEM TEST REPORT

Pioneer Resources
80 Windmill Dr
Phillipsburg, KS 67661
ATTN: Steve Murphy

6-14s-31w Gove, KS

Binkley Unit #1

Job Ticket: 49878

DST#: 3

Test Start: 2012.11.01 @ 20:30:43

GENERAL INFORMATION:

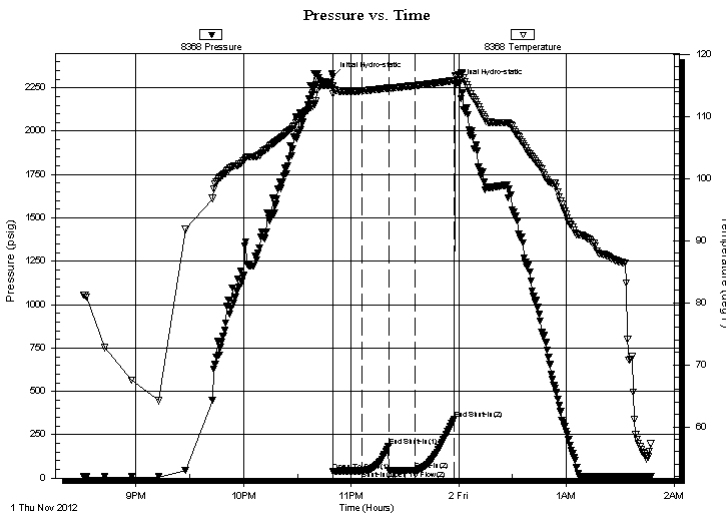
Formation: **Johnson**
 Deviated: No Whipstock: ft (KB)
 Time Tool Opened: 22:49:58
 Time Test Ended: 02:03:28
 Interval: **4576.00 ft (KB) To 4640.00 ft (KB) (TVD)**
 Total Depth: 4640.00 ft (KB) (TVD)
 Hole Diameter: 7.88 inches Hole Condition: Fair
 Test Type: Conventional Bottom Hole (Reset)
 Tester: Shane McBride
 Unit No: 55
 Reference Elevations: 2991.00 ft (KB)
 2986.00 ft (CF)
 KB to GR/CF: 5.00 ft

Serial #: 8368 Outside

Press @ Run Depth: 44.13 psig @ 4577.00 ft (KB) Capacity: 8000.00 psig
 Start Date: 2012.11.01 End Date: 2012.11.02 Last Calib.: 2012.11.02
 Start Time: 20:30:43 End Time: 01:47:28 Time On Btm: 2012.11.01 @ 22:49:43
 Time Off Btm: 2012.11.01 @ 23:57:58

TEST COMMENT: Weak blow died in 5 min.
 No return
 No blow
 No return

PRESSURE SUMMARY



Time (Min.)	Pressure (psig)	Temp (deg F)	Annotation
0	2313.67	114.88	Initial Hydro-static
1	39.25	113.65	Open To Flow (1)
17	42.07	114.12	Shut-In(1)
32	185.78	114.57	End Shut-In(1)
32	42.77	114.50	Open To Flow (2)
46	44.13	114.96	Shut-In(2)
68	341.38	115.77	End Shut-In(2)
69	2275.95	116.48	Final Hydro-static

Recovery

Length (ft)	Description	Volume (bbl)
2.00	mud 100% m	0.01

Gas Rates

Choke (inches)	Pressure (psig)	Gas Rate (Mcf/d)

* Recovery from multiple tests



**TRILOBITE
TESTING, INC.**

DRILL STEM TEST REPORT

TOOL DIAGRAM

Pioneer Resources
80 Windmill Dr
Phillipsburg, KS 67661
ATTN: Steve Murphy

6-14s-31w Gove,KS
Binkley Unit #1
Job Ticket: 49878 **DST#: 3**
Test Start: 2012.11.01 @ 20:30:43

Tool Information

Drill Pipe:	Length: 4458.00 ft	Diameter: 3.80 inches	Volume: 62.53 bbl	Tool Weight:	1500.00 lb
Heavy Wt. Pipe:	Length: 0.00 ft	Diameter: 0.00 inches	Volume: 0.00 bbl	Weight set on Packer:	25000.00 lb
Drill Collar:	Length: 124.00 ft	Diameter: 2.25 inches	Volume: 0.61 bbl	Weight to Pull Loose:	85000.00 lb
			<u>Total Volume: 63.14 bbl</u>	Tool Chased	0.00 ft
Drill Pipe Above KB:	33.00 ft			String Weight: Initial	64000.00 lb
Depth to Top Packer:	4576.00 ft			Final	64000.00 lb
Depth to Bottom Packer:	ft				
Interval between Packers:	64.00 ft				
Tool Length:	91.00 ft				
Number of Packers:	2	Diameter: 6.75 inches			

Tool Comments:

Tool Description	Length (ft)	Serial No.	Position	Depth (ft)	Accum. Lengths
-------------------------	--------------------	-------------------	-----------------	-------------------	-----------------------

Change Over Sub	1.00			4550.00	
Shut In Tool	5.00			4555.00	
Hydraulic tool	5.00			4560.00	
Jars	5.00			4565.00	
Safety Joint	2.00			4567.00	
Packer	5.00			4572.00	27.00 Bottom Of Top Packer
Packer	4.00			4576.00	
Stubb	1.00			4577.00	
Recorder	0.00	6667	Inside	4577.00	
Recorder	0.00	8368	Outside	4577.00	
Perforations	25.00			4602.00	
Change Over Sub	1.00			4603.00	
Drill Pipe	31.00			4634.00	
Change Over Sub	1.00			4635.00	
Bullnose	5.00			4640.00	64.00 Bottom Packers & Anchor

Total Tool Length: 91.00



**TRILOBITE
TESTING, INC.**

DRILL STEM TEST REPORT

FLUID SUMMARY

Pioneer Resources
80 Windmill Dr
Phillipsburg, KS 67661
ATTN: Steve Murphy

6-14s-31w Gove,KS
Binkley Unit #1
Job Ticket: 49878 **DST#: 3**
Test Start: 2012.11.01 @ 20:30:43

Mud and Cushion Information

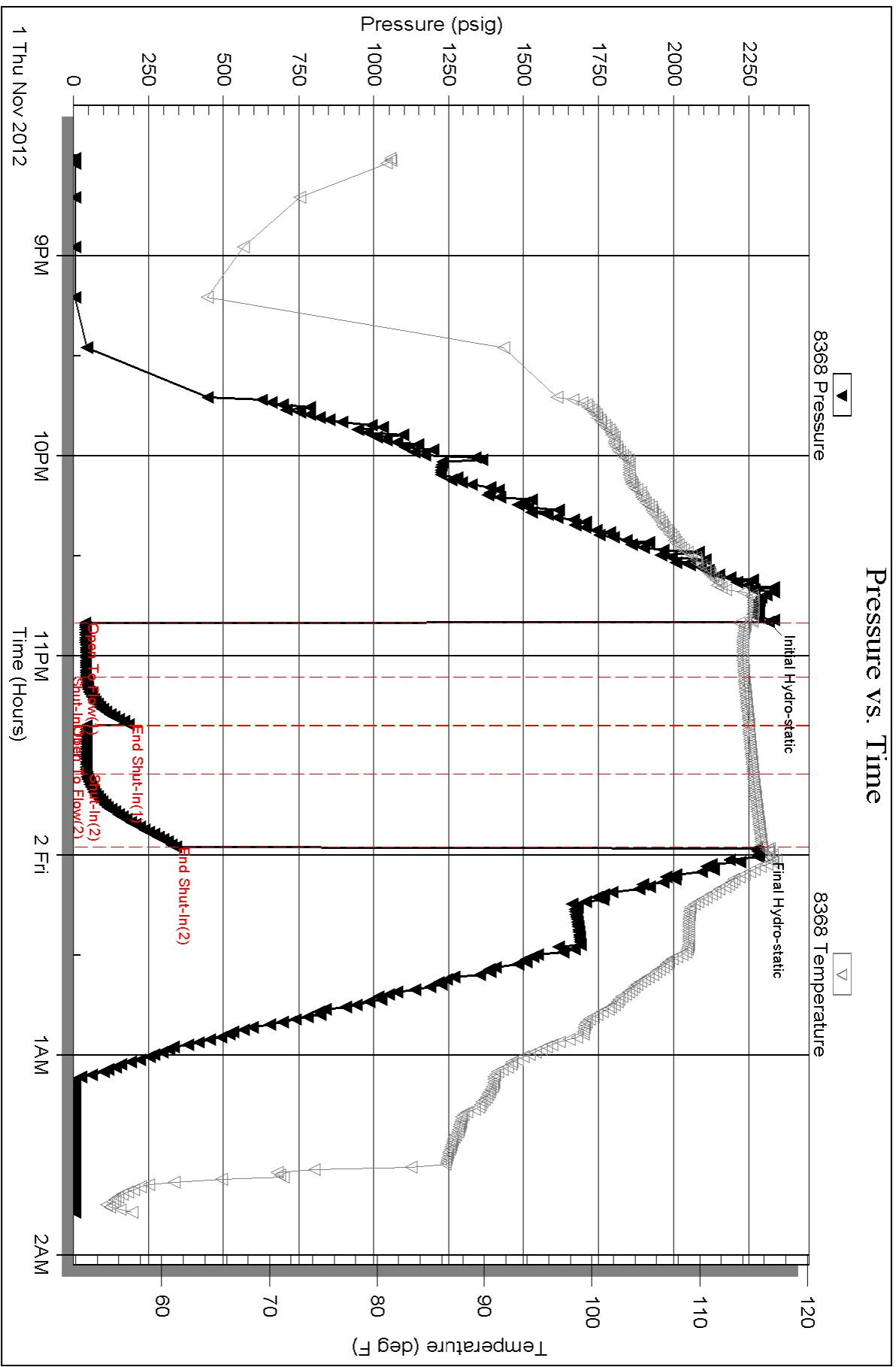
Mud Type: Gel Chem	Cushion Type:	Oil API:	0 deg API
Mud Weight: 10.00 lb/gal	Cushion Length: ft	Water Salinity:	0 ppm
Viscosity: 49.00 sec/qt	Cushion Volume: bbl		
Water Loss: 7.59 in ³	Gas Cushion Type:		
Resistivity: 0.00 ohm.m	Gas Cushion Pressure: psig		
Salinity: 3700.00 ppm			
Filter Cake: 1.00 inches			

Recovery Information

Recovery Table

Length ft	Description	Volume bbl
2.00	mud 100% m	0.010

Total Length: 2.00 ft Total Volume: 0.010 bbl
 Num Fluid Samples: 0 Num Gas Bombs: 0 Serial #:
 Laboratory Name: Laboratory Location:
 Recovery Comments:



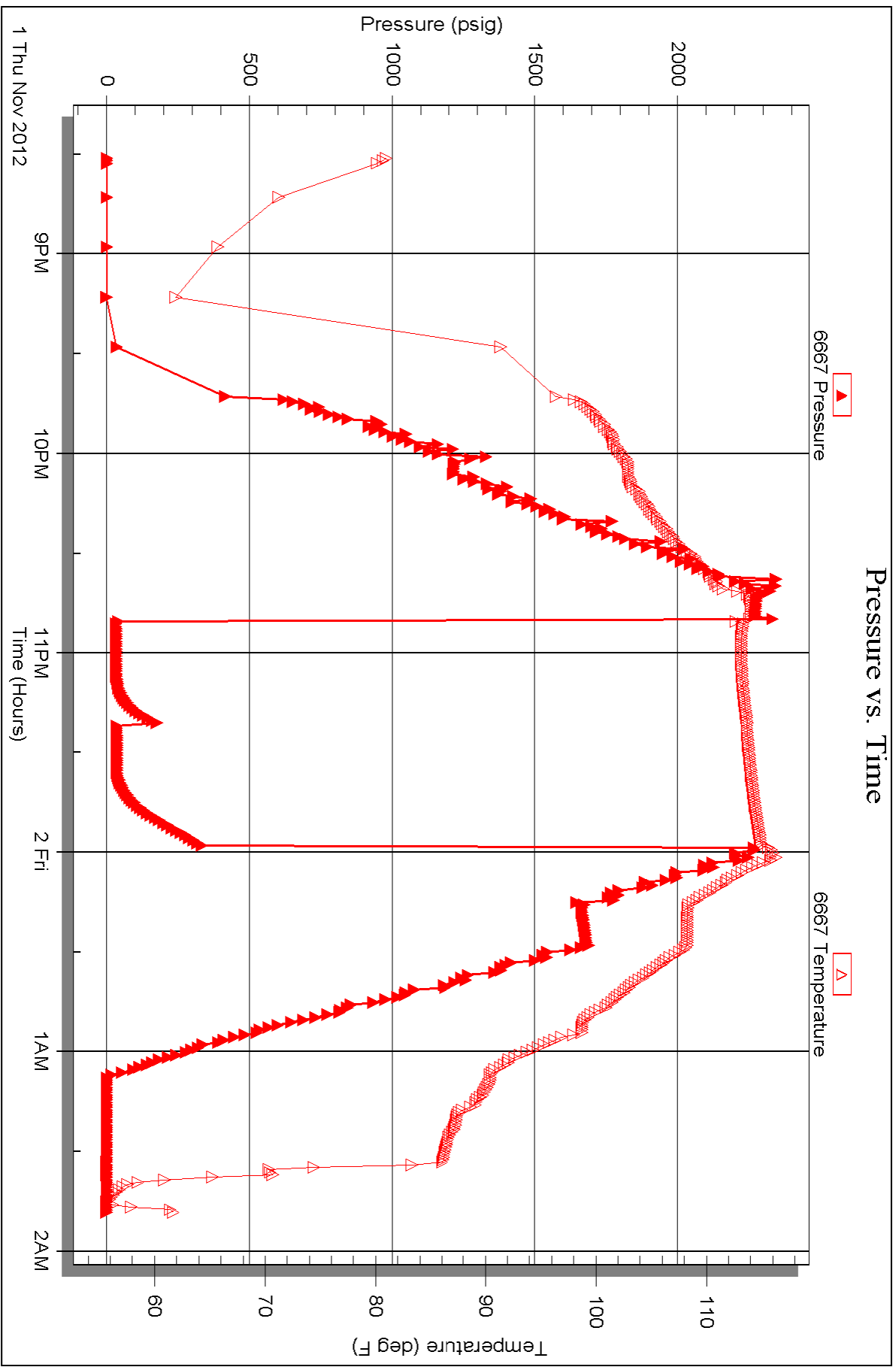
Serial #: 6667

Inside

Pioneer Resources

Binkey Unit #1

DST Test Number: 3





TRILOBITE TESTING INC.

1515 Commerce Parkway • Hays, Kansas 67601

Test Ticket

NO. 49876

Well Name & No. Binkley Unit #1 Test No. #1 Date 10/30/12
 Company Pioneer Resources Elevation 2991' KB 2986' GL
 Address 80 Windmill Dr. Phillipsburg, Ks 67661
 Co. Rep / Geo. Steve Murphy Rig WW #10
 Location: Sec. 6 Twp. 14S Rge. 31W Co. Gove State Ks

Interval Tested 4176 4210 Zone Tested H
 Anchor Length 34 Drill Pipe Run 4049' Mud Wt. 9.5
 Top Packer Depth 4171 Drill Collars Run 124' Vis 50
 Bottom Packer Depth 4176 Wt. Pipe Run — WL 7.4
 Total Depth 4210 Chlorides 3900 ppm System LCM #1

Blow Description 1/4" blow
No return
No blow
No return

Rec	Feet of	%gas	%oil	%water	%mud
<u>3'</u>	<u>Mud oil spots on top</u>			<u>100</u>	
Rec	Feet of	%gas	%oil	%water	%mud
Rec	Feet of	%gas	%oil	%water	%mud
Rec	Feet of	%gas	%oil	%water	%mud

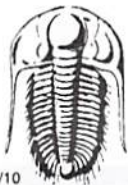
Rec Total 3' BHT 112° Gravity — API RW — @ — F Chlorides — ppm

(A) Initial Hydrostatic <u>2084</u>	<input checked="" type="checkbox"/> Test <u>1250</u>	T-On Location <u>17:50</u>
(B) First Initial Flow <u>26</u>	<input checked="" type="checkbox"/> Jars <u>250</u>	T-Started <u>18:55</u>
(C) First Final Flow <u>29</u>	<input checked="" type="checkbox"/> Safety Joint <u>75</u>	T-Open <u>20:56</u>
(D) Initial Shut-In <u>340</u>	<input checked="" type="checkbox"/> Circ Sub <u>N/A</u>	T-Pulled <u>21:56</u>
(E) Second Initial Flow <u>31</u>	<input type="checkbox"/> Hourly Standby	T-Out
(F) Second Final Flow <u>32</u>	<input type="checkbox"/> Mileage <u>64 RT</u> 99.20	Comments
(G) Final Shut-In <u>225</u>	<input type="checkbox"/> Sampler	
(H) Final Hydrostatic <u>1948</u>	<input type="checkbox"/> Straddle	<input type="checkbox"/> Ruined Shale Packer

Initial Open 15 Shale Packer 250 Ruined Packer
 Initial Shut-In 15 Extra Packer Extra Copies
 Final Flow 15 Extra Recorder Sub Total 0
 Final Shut-In 15 Day Standby Total 1924.20
 Accessibility MP/DST Disc't
 Sub Total 1924.20

Approved By [Signature] Our Representative [Signature]

Trilobite Testing Inc. shall not be liable for damaged of any kind of the property or personnel of the one for whom a test is made, or for any loss suffered or sustained, directly or indirectly, through the use of its equipment, or its statements or opinion concerning the results of any test, tools lost or damaged in the hole shall be paid for at cost by the party for whom the test is made.



TRILOBITE TESTING INC.

1515 Commerce Parkway • Hays, Kansas 67601

Test Ticket

NO. 49877

4/10

Well Name & No. Binkley Unit #1 Test No. #2 Date 11/1/12
 Company Pioneer Resources Elevation 2991' KB 2986' GL
 Address 80 Windmill Dr. Phillipsburg, KS 67661
 Co. Rep / Geo. Steve Murphy Rig WW #10
 Location: Sec. 6 Twp. 14S Rge. 3W Co. Gove State Ks

Interval Tested 4474 4506 Zone Tested Pawnee
 Anchor Length 32 Drill Pipe Run _____ Mud Wt. 9.4
 Top Packer Depth 4469 Drill Collars Run 124' Vis 55
 Bottom Packer Depth 4474 Wt. Pipe Run _____ WL 7.0
 Total Depth 4506 Chlorides 3000 ppm System LCM #1

Blow Description Weak 1/8 in blow
No return
No blow
No return

Rec	Feet of	%gas	%oil	%water	%mud
<u>1'</u>	<u>Mud</u>			<u>100</u>	
Rec	Feet of	%gas	%oil	%water	%mud
Rec	Feet of	%gas	%oil	%water	%mud
Rec	Feet of	%gas	%oil	%water	%mud
Rec	Feet of	%gas	%oil	%water	%mud

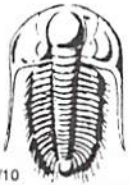
Rec Total 1' BHT 113° Gravity _____ API RW _____ @ _____ ° F Chlorides _____ ppm

(A) Initial Hydrostatic 2204 Test 1250 T-On Location 01:50
 (B) First Initial Flow 15 Jars 250 T-Started 02:15
 (C) First Final Flow 18 Safety Joint 75 T-Open 04:05
 (D) Initial Shut-In 820 Circ Sub N/C T-Pulled 05:05
 (E) Second Initial Flow 19 Hourly Standby T-Out 07:10
 (F) Second Final Flow 21 Mileage 64mi 99.20 Comments _____
 (G) Final Shut-In 824 Sampler _____
 (H) Final Hydrostatic 2182 Straddle _____

Shale Packer 250 Ruined Shale Packer _____
 Extra Packer _____ Ruined Packer _____
 Extra Recorder _____ Extra Copies _____
 Initial Open 15 Day Standby _____ Sub Total 0
 Initial Shut-In 15 Accessibility _____ Total 1924.20
 Final Flow 15 Sub Total 1924.20 MP/DST Disc't _____
 Final Shut-In 15

Approved By [Signature] Our Representative [Signature]

Trilobite Testing Inc. shall not be liable for damaged of any kind of the property or personnel of the one for whom a test is made, or for any loss suffered or sustained, directly or indirectly, through the use of its equipment, or its statements or opinion concerning the results of any test, tools lost or damaged in the hole shall be paid for at cost by the party for whom the test is made.



TRILOBITE TESTING INC.

1515 Commerce Parkway • Hays, Kansas 67601

Test Ticket

NO. **49878**

Well Name & No. Binkley Unit #1 Test No. #3 Date 11/2/12
 Company Pioneer Resources Elevation 2991 KB 2986 GL
 Address 80 Windmill Dr. Phillipsburg, KS 67661
 Co. Rep / Geo. Steve Murphy Rig WW #10
 Location: Sec. 6 Twp. 14S Rge. 3W Co. Gove State Ks

Interval Tested 4576 4640 Zone Tested Johnson
 Anchor Length 64 Drill Pipe Run 4458 Mud Wt. 9.4
 Top Packer Depth 4571 Drill Collars Run 124' Vis 49
 Bottom Packer Depth 4574 Wt. Pipe Run --- WL 7.6
 Total Depth 4640 Chlorides _____ ppm System LCM #1/2

Blow Description Weak blow died in 5 min
No return
No blow
No return

Rec	Feet of	%gas	%oil	%water	%mud
<u>2'</u>	<u>Med</u>			<u>100</u>	
Rec	Feet of	%gas	%oil	%water	%mud
Rec	Feet of	%gas	%oil	%water	%mud
Rec	Feet of	%gas	%oil	%water	%mud
Rec	Feet of	%gas	%oil	%water	%mud

Rec Total 2' BHT 117° Gravity _____ API RW _____ @ _____ ° F Chlorides _____ ppm

(A) Initial Hydrostatic 2313 Test 1250 T-On Location 19:50
 (B) First Initial Flow 39 Jars 250 T-Started 20:30
 (C) First Final Flow 42 Safety Joint 75 T-Open 22:50
 (D) Initial Shut-In 185 Circ Sub N/C T-Pulled 23:50
 (E) Second Initial Flow 42 Hourly Standby T-Out 02:03
 (F) Second Final Flow 44 Mileage 64RT 99.20 Comments _____
 (G) Final Shut-In 341 Sampler _____
 (H) Final Hydrostatic 2275 Straddle _____

Initial Open 15 Shale Packer 250 Ruined Shale Packer _____
 Initial Shut-In 15 Extra Packer _____ Ruined Packer _____
 Final Flow 15 Extra Recorder _____ Sub Total 0
 Final Shut-In 15 Day Standby _____ Total 1924.20
 Accessibility _____ MP/DST Disc't _____
 Sub Total 1924.20

Approved By _____ Our Representative [Signature]

Trilobite Testing Inc. shall not be liable for damaged of any kind of the property or personnel of the one for whom a test is made, or for any loss suffered or sustained, directly or indirectly, through the use of its equipment, or its statements or opinion concerning the results of any test, tools lost or damaged in the hole shall be paid for at cost by the party for whom the test is made.