



**TRILOBITE
TESTING, INC.**

DRILL STEM TEST REPORT

Prepared For: **Jason Oil Co LLC**

PO Box 701
Russell KS 67665+0701

ATTN: Jeff Lawler

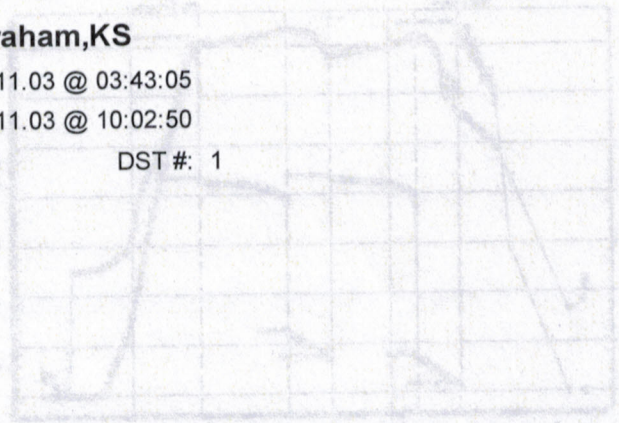
John Goddard #1

4-8s-24w Graham,KS

Start Date: 2012.11.03 @ 03:43:05

End Date: 2012.11.03 @ 10:02:50

Job Ticket #: 49366 DST #: 1



Trilobite Testing, Inc

PO Box 362 Hays, KS 67601

ph: 785-625-4778 fax: 785-625-5620

Jason Oil Co LLC 4-8s-24w Graham,KS John Goddard #1 DST #1 LKC "A,B &C" 2012.11.03

DRILL STEM TEST REPORT



Jason Oil Co LLC
 PO Box 701
 Russell KS 67665+0701
 ATTN: Jeff Lawler

4-8s-24w Graham, KS
 John Goddard #1
 Job Ticket: 49366
 DST#: 1
 Test Start: 2012.11.03 @ 03:43:05

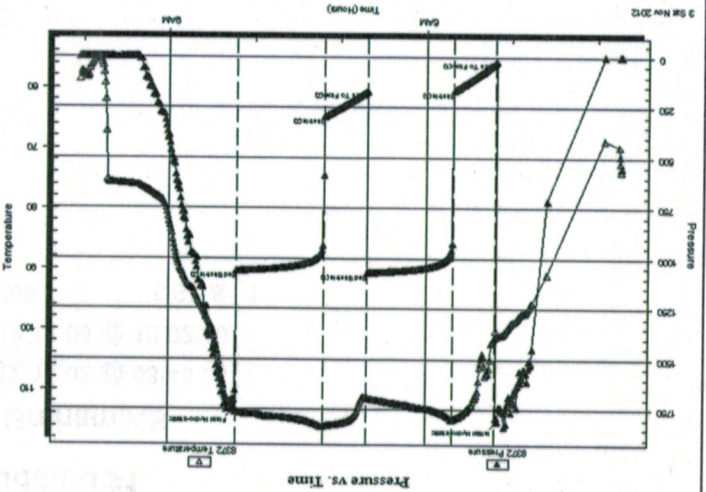
GENERAL INFORMATION:

Formation: LKC "A,B & C"
 Deviated: No
 Whipstock: No
 Time Tool Opened: 05:11:10
 Time Test Ended: 10:02:50
 Interval: 3651.00 ft (KB) To 3705.00 ft (KB) (TVD)
 Total Depth: 3705.00 ft (KB) (TVD)
 Hole Diameter: 7.88 inchesHole Condition: Poor
 Outside
 Serial #: 8372
 Press@RunDepth: 294.08 psig @
 End Date: 2012.11.03
 End Time: 03:43:05
 Capacity: 8000.00 psig
 Last Calib.: 2012.11.03
 Time On Btm: 2012.11.03 @ 05:09:50
 Time Off Btm: 2012.11.03 @ 08:13:59

TEST COMMENT: IF:(30min) 2" blow in 2 min. 8" blow in 6 min. BOB in 9 min.
 IS:(60min) No return
 FF:(30min) 2" in 3 min. 8" in 8 min. BOB in 12 min.
 FS:(60min) No return

PRESSURE SUMMARY

Annotation	Time (Min.)	Pressure (psig)	Temp (deg F)
Initial Hydro-static	0	1805.94	101.10
Open To Flow (1)	2	18.55	100.25
Shut-In(1)	31	166.21	114.77
End Shut-In(1)	92	1070.33	111.40
Open To Flow (2)	92	169.55	110.95
Shut-In(2)	122	294.08	115.91
End Shut-In(2)	183	1061.48	113.65
Final Hydro-static	185	1749.88	111.83



Recovery

Length (ft)	Description	Volume (bbl)
600.00	MMW / oil spcks in tool	8.15

Gas Rates

Choke (inches)	Pressure (psig)	Gas Rate (Mcf/d)



**TRILOBITE
TESTING, INC.**

DRILL STEM TEST REPORT

Jason Oil Co LLC
PO Box 701
Russell KS 67665+0701
ATTN: Jeff Lawler

4-8s-24w Graham,KS
John Goddard #1
Job Ticket: 49366 DST#: 1
Test Start: 2012.11.03 @ 03:43:05

GENERAL INFORMATION:

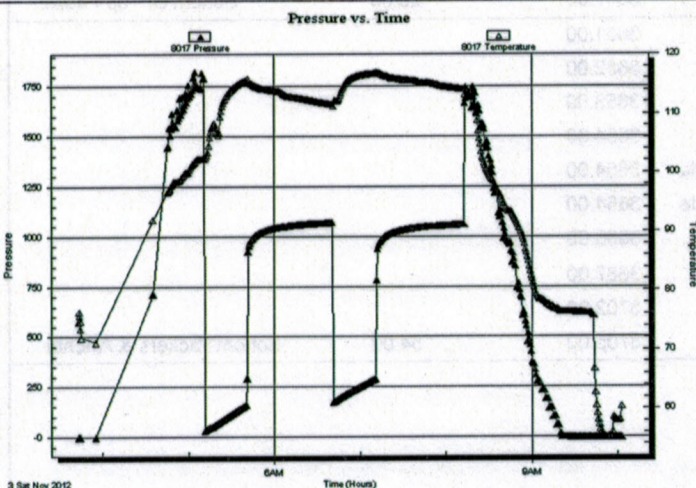
Formation: **LKC "A,B&C"**
Deviated: No Whipstock: ft (KB) Test Type: Conventional Bottom Hole (Initial)
Time Tool Opened: 05:11:10 Tester: Andy Carreira
Time Test Ended: 10:02:50 Unit No: 39
Interval: **3651.00 ft (KB) To 3705.00 ft (KB) (TVD)** Reference Elevations: 2402.00 ft (KB)
Total Depth: 3705.00 ft (KB) (TVD) 2394.00 ft (CF)
Hole Diameter: 7.88 inches Hole Condition: Poor KB to GR/CF: 8.00 ft

Serial #: 8017

Inside

Press@RunDepth: psig @ 3654.00 ft (KB) Capacity: 8000.00 psig
Start Date: 2012.11.03 End Date: 2012.11.03 Last Calib.: 2012.11.03
Start Time: 03:43:05 End Time: 10:02:50 Time On Btm:
Time Off Btm:

TEST COMMENT: IF:(30min) 2" blow in 2 min. 8" blow in 6 min. BOB in 9 min.
ISl:(60min) No return
FF:(30min) 2" in 3 min. 8" in 8 min. BOB in 12 min.
FSl:(60min) No return



PRESSURE SUMMARY

Time (Min.)	Pressure (psig)	Temp (deg F)	Annotation

Recovery

Length (ft)	Description	Volume (bbl)
600.00	MW w / oil spcks in tool	8.15

Gas Rates

	Choke (inches)	Pressure (psig)	Gas Rate (Mcf/d)

TOOL DIAGRAM

DRILL STEM TEST REPORT



Jason Oil Co LLC

4-8s-24w Graham, KS

PO Box 701
Russell KS 67665+0701

John Goddard #1

ATTN: Jeff Lawler

Job Ticket: 49366 DST#: 1

Test Start: 2012.11.03 @ 03:43:05

Tool Information

Drill Pipe: Length: 3610.00 ft Diameter: 3.80 inches Volume: 50.64 bbl Tool Weight: 2500.00 lb
 Heavy Wt. Pipe: Length: 0.00 ft Diameter: 2.70 inches Volume: 0.00 bbl Weight set on Packer: 24000.00 lb
 Drill Collar: Length: 29.23 ft Diameter: 2.25 inches Volume: 0.14 bbl Weight to Pull Loose: 52000.00 lb
 Drill Pipe Above KB: 8.23 ft
 Depth to Top Packer: 3651.00 ft Tool Chased 0.00 ft
 Depth to Bottom Packer: ft String Weight: Initial 42000.00 lb Final 45000.00 lb
 Interval between Packers: 54.00 ft
 Tool Length: 74.00 ft
 Number of Packers: 2 Diameter: 6.75 inches
 Tool Comments:

Tool Description Length (ft) Serial No. Position Depth (ft) Accum. Lengths

Change Over Sub	1.00	3632.00		
Shut In Tool	5.00	3637.00		
Hydraulic tool	5.00	3642.00		
Packer	5.00	3647.00		Bottom Of Top Packer
Packer	4.00	3651.00		
Stubb	1.00	3652.00		
Perforations	1.00	3653.00		
Change Over Sub	1.00	3654.00		
Recorder	0.00	3654.00	Inside	
Recorder	0.00	3654.00	Outside	
Drill Pipe	32.00	3686.00		
Change Over Sub	1.00	3687.00		
Perforations	15.00	3702.00		
Bullnose	3.00	3705.00		
Total Tool Length:	74.00			



**TRILOBITE
TESTING, INC.**

DRILL STEM TEST REPORT

FLUID SUMMARY

Jason Oil Co LLC
PO Box 701
Russell KS 67665+0701
ATTN: Jeff Lawler

4-8s-24w Graham,KS
John Goddard #1
Job Ticket: 49366 **DST#: 1**
Test Start: 2012.11.03 @ 03:43:05

Mud and Cushion Information

Mud Type: Gel Chem
Mud Weight: 9.00 lb/gal
Viscosity: 62.00 sec/qt
Water Loss: 7.56 in³
Resistivity: ohm.m
Salinity: 400.00 ppm
Filter Cake: inches

Cushion Type:
Cushion Length: ft
Cushion Volume: bbl
Gas Cushion Type:
Gas Cushion Pressure: psig

Oil API: deg API
Water Salinity: 28000 ppm

Recovery Information

Recovery Table

Length ft	Description	Volume bbl
600.00	MW w/ oil spcks in tool	8.150

Total Length: 600.00 ft Total Volume: 8.150 bbl

Num Fluid Samples: 0 Num Gas Bombs: 0 Serial #:

Laboratory Name: Laboratory Location:

Recovery Comments:



Serial #: 8372

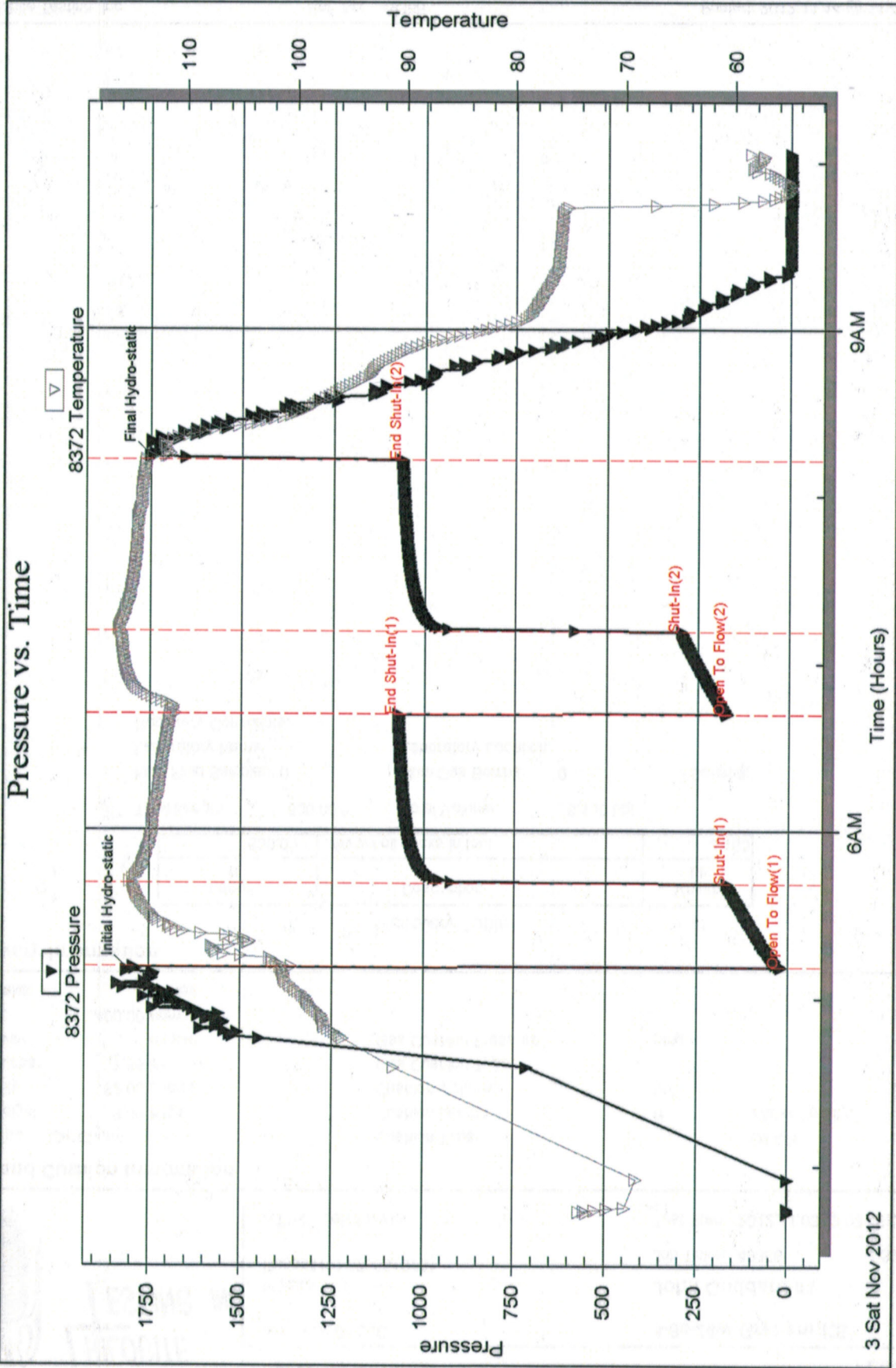
Outside

Jason Oil Co LLC

John Goddard #1

DST Test Number: 1

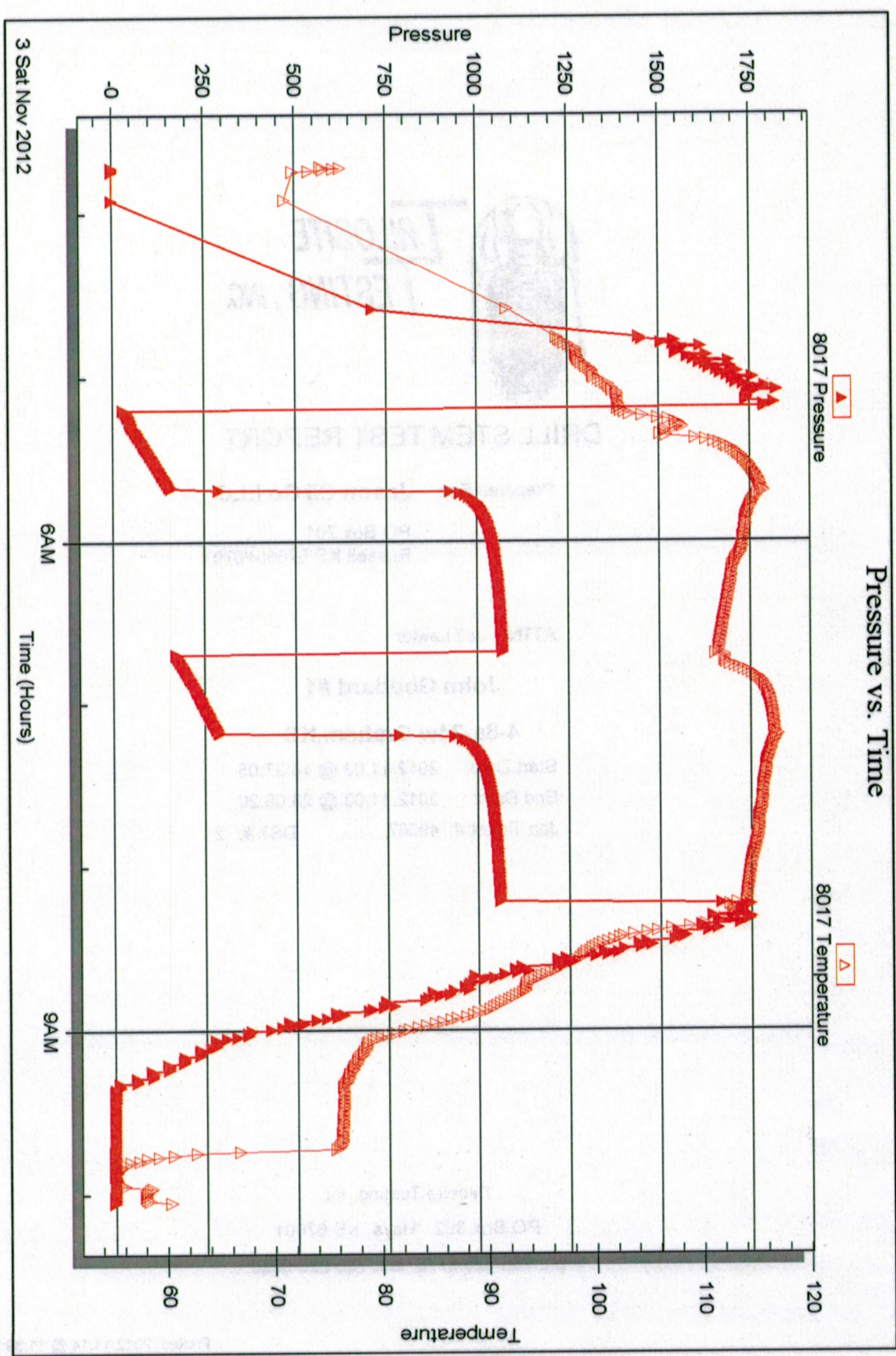
Pressure vs. Time



3 Sat Nov 2012

6AM

9AM



TRILOBITE
TESTING, INC.



DRILL STEM TEST REPORT

Prepared For: **Jason Oil Co LLC**

PO Box 701
Russell KS 67665+0701

ATTN: Jeff Lawler

John Goddard #1

4-8s-24w Graham,KS

Start Date: 2012.11.03 @ 16:37:05

End Date: 2012.11.03 @ 23:05:20

Job Ticket #: 49367
DST #: 2

Trilobite Testing, Inc

PO Box 362 Hays, KS 67601

ph: 785-625-4778 fax: 785-625-5620

Jason Oil Co LLC 4-8s-24w Graham,KS John Goddard #1 DST # 2 LKC "D-F" 2012.11.03



**TRILOBITE
TESTING, INC.**

DRILL STEM TEST REPORT

Jason Oil Co LLC
PO Box 701
Russell KS 67665+0701
ATTN: Jeff Lawler

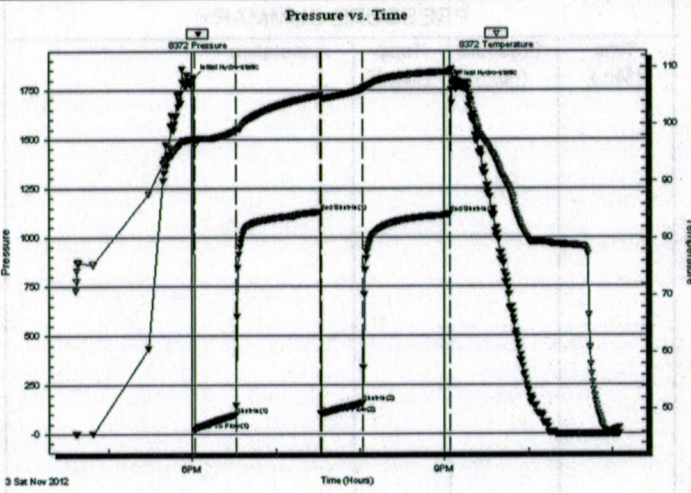
4-8s-24w Graham,KS
John Goddard #1
Job Ticket: 49367 **DST#: 2**
Test Start: 2012.11.03 @ 16:37:05

GENERAL INFORMATION:

Formation: **LKC "D-F"**
Deviated: No Whipstock: ft (KB)
Time Tool Opened: 18:02:10
Time Test Ended: 23:05:20
Interval: **3701.00 ft (KB) To 3740.00 ft (KB) (TVD)**
Total Depth: 3740.00 ft (KB) (TVD)
Hole Diameter: 7.88 inches Hole Condition: Poor
Reference Elevations: 2402.00 ft (KB)
2394.00 ft (CF)
KB to GR/CF: 8.00 ft

Serial #: 8372 Outside
Press@RunDepth: 157.47 psig @ 3704.00 ft (KB) Capacity: 8000.00 psig
Start Date: 2012.11.03 End Date: 2012.11.03 Last Calib.: 2012.11.03
Start Time: 16:37:05 End Time: 23:05:20 Time On Btm: 2012.11.03 @ 18:01:10
Time Off Btm: 2012.11.03 @ 21:05:50

TEST COMMENT: IF:(30min) 2" blow in 2 min. 6" in 7 min. 8" in 10 min. BOB in 17min
ISl:(60min) No Return
FF:(30min) 2" blow in 4 min. 6" in 13 min. 8" in 16 min. BOB in 28 min.
FSl:(60min) No Return



PRESSURE SUMMARY

Time (Min.)	Pressure (psig)	Temp (deg F)	Annotation
0	1812.49	97.48	Initial Hydro-static
1	19.71	96.46	Open To Flow (1)
30	98.54	98.92	Shut-In(1)
91	1129.32	105.13	End Shut-In(1)
91	102.14	104.74	Open To Flow (2)
121	157.47	106.20	Shut-In(2)
184	1118.06	109.29	End Shut-In(2)
185	1779.93	109.74	Final Hydro-static

Recovery

Length (ft)	Description	Volume (bbl)
120.00	GOSMW g=5% o=tr m=25% w=70%	1.42
185.00	GOCWM g=10% o=10% w=30% m=50%	2.60
10.00	GO g=10% o=90%	0.14
0.00	GIP=60ft	0.00

* Recovery from multiple tests

Gas Rates

Description	Choke (inches)	Pressure (psig)	Gas Rate (Mcf/d)

DRILL STEM TEST REPORT



Jason Oil Co LLC
 PO Box 701
 Russell KS 67665+0701
 ATTN: Jeff Lawler

4-8s-24w Graham, KS
 John Goddard #1
 Job Ticket: 49367
 DST#: 2
 Test Start: 2012.11.03 @ 16:37:05

GENERAL INFORMATION:

Formation: LKC "D-F"
 Deviated: No Whipstock: ft (KB)
 Time Tool Opened: 18:02:10
 Time Test Ended: 23:05:20
 Interval: 3701.00 ft (KB) To 3740.00 ft (KB) (TVD)
 Total Depth: 3740.00 ft (KB) (TVD)
 Hole Diameter: 7.88 inchesHole Condition: Poor
 Reference Elevations: 2402.00 ft (KB)
 2394.00 ft (CF)
 8.00 ft
 Test Type: Conventional Bottom Hole (Reset)
 Tester: Andy Carreira
 Unit No: 39

Serial #: 8017 Inside

Press@RunDepth: psig @ 3704.00 ft (KB)
 Start Date: 2012.11.03
 End Date: 2012.11.03
 Start Time: 16:37:05
 End Time: 23:05:20
 Capacity: 8000.00 psig
 Last Callb.: 2012.11.03
 Time On Btm: 23:05:20
 Time Off Btm:
TEST COMMENT: IF:(30min) 2" blow in 2 min. 6" in 7 min. 8" in 10 min. BOB in 17min
 IS:(60min) No Return
 FF:(30min) 2" blow in 4 min. 6" in 13 min. 8" in 16 min. BOB in 28 min.
 FS:(60min) No Return

PRESSURE SUMMARY



Recovery

Length (ft)	Description	Volume (bbl)
120.00	GOSMV g=5% o=tr m=25% w=70%	1.42
185.00	GOCVM g=10% o=10% w=30% m=50%	2.60
10.00	GO g=10% o=90%	0.14
0.00	GIP=60ft	0.00

* Recovery from multiple tests

Gas Rates

Choke (inches)	Pressure (psig)	Gas Rate (Mcf/d)



**TRILOBITE
TESTING, INC.**

DRILL STEM TEST REPORT

TOOL DIAGRAM

Jason Oil Co LLC

4-8s-24w Graham,KS

PO Box 701
Russell KS 67665+0701

John Goddard #1

Job Ticket: 49367

DST#: 2

ATTN: Jeff Lawler

Test Start: 2012.11.03 @ 16:37:05

Tool Information

Drill Pipe:	Length: 3672.00 ft	Diameter: 3.80 inches	Volume: 51.51 bbl	Tool Weight: 2500.00 lb
Heavy Wt. Pipe:	Length: 0.00 ft	Diameter: 2.70 inches	Volume: 0.00 bbl	Weight set on Packer: 24000.00 lb
Drill Collar:	Length: 29.23 ft	Diameter: 2.25 inches	Volume: 0.14 bbl	Weight to Pull Loose: 52000.00 lb
			<u>Total Volume: 51.65 bbl</u>	Tool Chased 0.00 ft
Drill Pipe Above KB:	20.23 ft			String Weight: Initial 44000.00 lb
Depth to Top Packer:	3701.00 ft			Final 46000.00 lb
Depth to Bottom Packer:	ft			
Interval between Packers:	39.00 ft			
Tool Length:	59.00 ft			
Number of Packers:	2	Diameter: 6.75 inches		
Tool Comments:				

Tool Description

Length (ft) Serial No. Position Depth (ft) Accum. Lengths

Tool Description	Length (ft)	Serial No.	Position	Depth (ft)	Accum. Lengths
Change Over Sub	1.00			3682.00	
Shut In Tool	5.00			3687.00	
Hydraulic tool	5.00			3692.00	
Packer	5.00			3697.00	20.00 Bottom Of Top Packer
Packer	4.00			3701.00	
Stubb	1.00			3702.00	
Perforations	1.00			3703.00	
Change Over Sub	1.00			3704.00	
Recorder	0.00	8017	Inside	3704.00	
Recorder	0.00	8372	Outside	3704.00	
Drill Pipe	32.00			3736.00	
Change Over Sub	1.00			3737.00	
Bullnose	3.00			3740.00	39.00 Bottom Packers & Anchor

Total Tool Length: 59.00



DRILL STEM TEST REPORT

Jason Oil Co LLC
 PO Box 701
 Russell KS 67665+0701
 ATTN: Jeff Lawler
 Test Start: 2012.11.03 @ 16:37:05

John Goddard #1
 Job Ticket: 49367
 DST#: 2

4-8s-24w Graham, KS

Mud and Cushion Information

Mud Type: Gel Chem
 Mud Weight: 9.00 lb/gal
 Viscosity: 56.00 sec/qt
 Water Loss: 7.97 in³
 Resistivity: ohm.m
 Salinity: 1000.00 ppm
 Filter Cake: inches

Cushion Type: Oil API
 Cushion Length: ft
 Cushion Volume: bbl
 Gas Cushion Type: psig
 Gas Cushion Pressure: psig

Recovery Information

Recovery Table

Length ft	Description	Volume bbl
120.00	GOSMW g=5% o=tr m=25% w=70%	1.417
185.00	GOCMM g=10% o=10% w=30% m=50%	2.595
10.00	GO g=10% o=90%	0.140
0.00	GIP=60ft	0.000

Total Length: 315.00 ft
 Total Volume: 4.152 bbl

Num Fluid Samples: 0
 Laboratory Name:
 Recovery Comments:

Num Gas Bombs: 0
 Laboratory Location:
 Serial #:

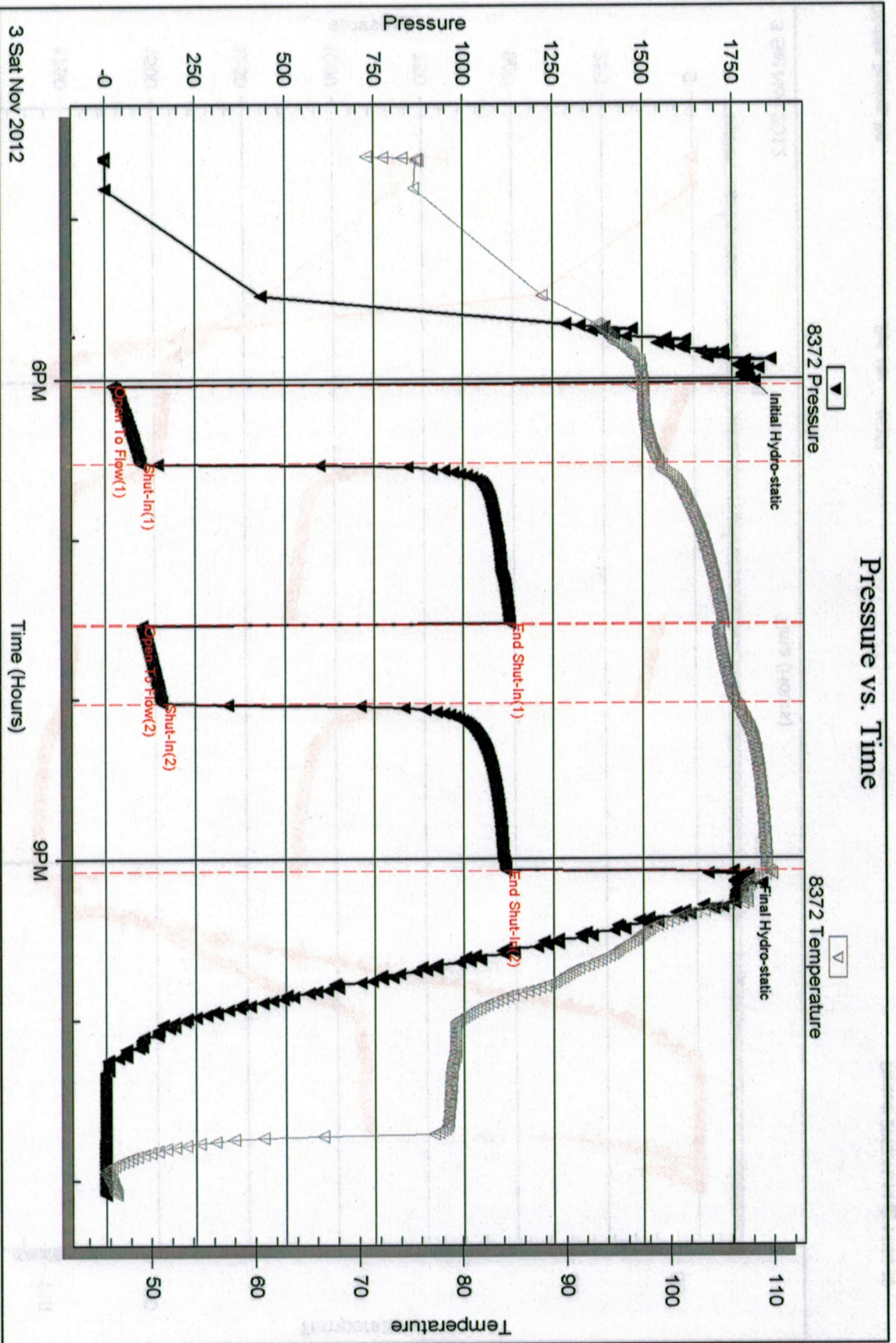
Serial #: 8372

Outside Jason Oil Co LLC

John Goddard #1

DST Test Number: 2

Pressure vs. Time



Triobite Testing, Inc

Ref. No: 49367

Printed: 2012.11.14 @ 11:39:40

Serial #: 8017

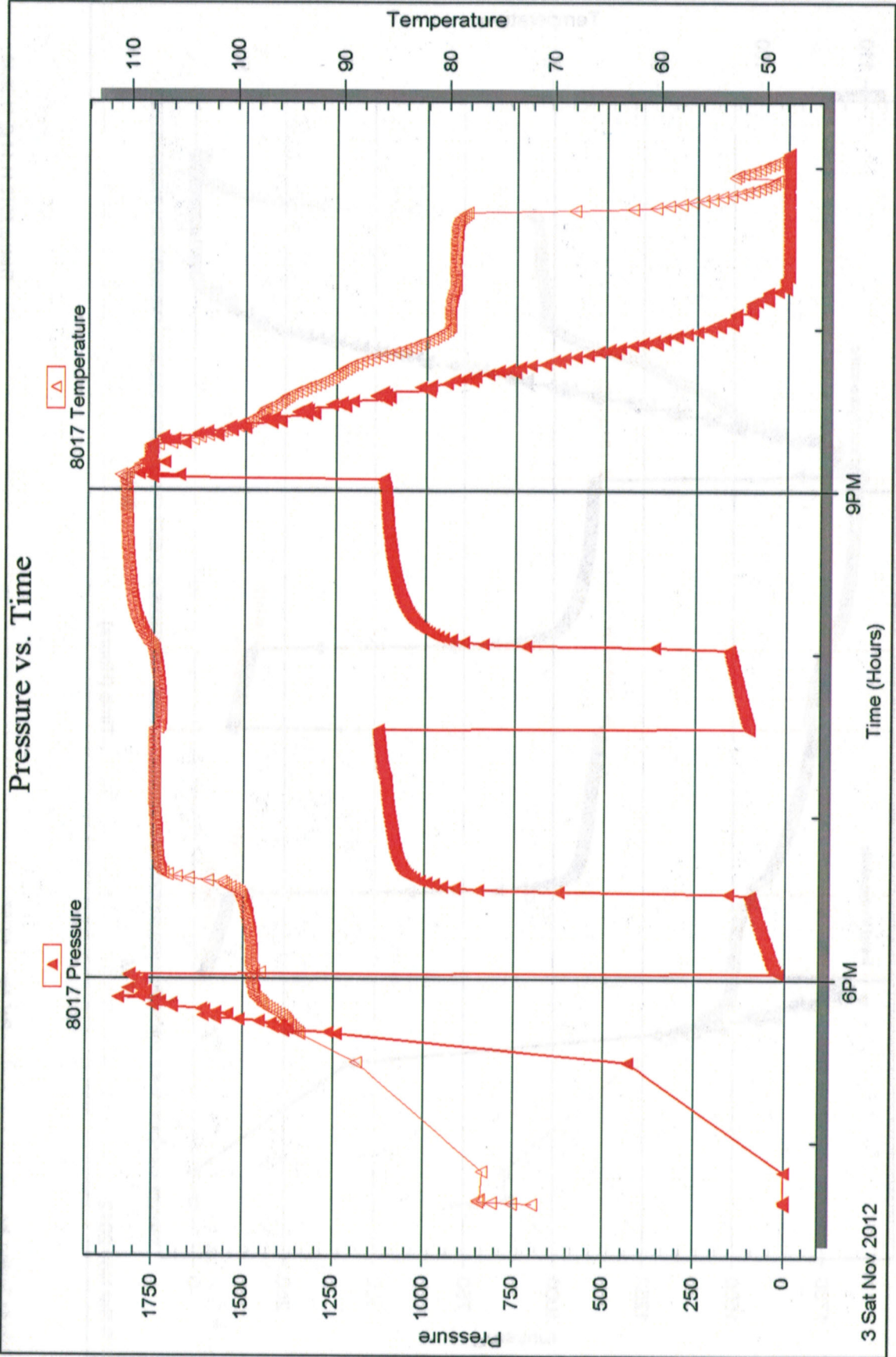
Inside

Jason Oil Co LLC

John Goddard #1

DST Test Number: 2

Pressure vs. Time





DRILL STEM TEST REPORT

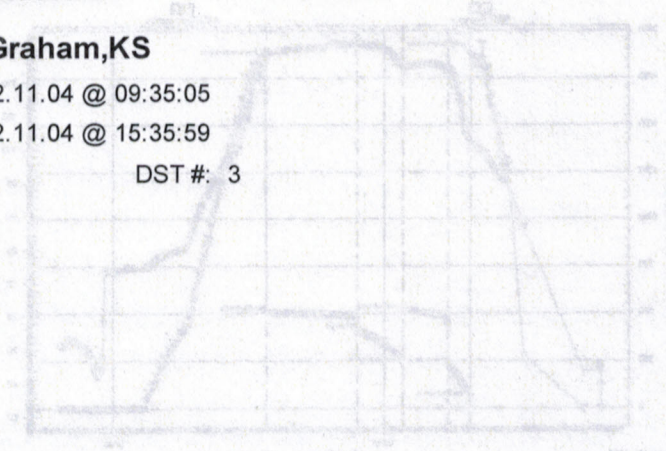
Prepared For: **Jason Oil Co LLC**
 PO Box 701
 Russell KS 67665+0701

ATTN: Jeff Lawler

John Goddard #1

4-8s-24w Graham,KS

Start Date: 2012.11.04 @ 09:35:05
 End Date: 2012.11.04 @ 15:35:59
 Job Ticket #: IF DST #: 3



Time	Pressure	Flow	Notes
09:35:05	100.00	0.00	Start Date
09:35:59	100.00	0.00	End Date
09:36:00	100.00	0.00	Job Ticket #
09:36:01	100.00	0.00	DST #
09:36:02	100.00	0.00	
09:36:03	100.00	0.00	
09:36:04	100.00	0.00	
09:36:05	100.00	0.00	
09:36:06	100.00	0.00	
09:36:07	100.00	0.00	
09:36:08	100.00	0.00	
09:36:09	100.00	0.00	
09:36:10	100.00	0.00	
09:36:11	100.00	0.00	
09:36:12	100.00	0.00	
09:36:13	100.00	0.00	
09:36:14	100.00	0.00	
09:36:15	100.00	0.00	
09:36:16	100.00	0.00	
09:36:17	100.00	0.00	
09:36:18	100.00	0.00	
09:36:19	100.00	0.00	
09:36:20	100.00	0.00	
09:36:21	100.00	0.00	
09:36:22	100.00	0.00	
09:36:23	100.00	0.00	
09:36:24	100.00	0.00	
09:36:25	100.00	0.00	
09:36:26	100.00	0.00	
09:36:27	100.00	0.00	
09:36:28	100.00	0.00	
09:36:29	100.00	0.00	
09:36:30	100.00	0.00	
09:36:31	100.00	0.00	
09:36:32	100.00	0.00	
09:36:33	100.00	0.00	
09:36:34	100.00	0.00	
09:36:35	100.00	0.00	
09:36:36	100.00	0.00	
09:36:37	100.00	0.00	
09:36:38	100.00	0.00	
09:36:39	100.00	0.00	
09:36:40	100.00	0.00	
09:36:41	100.00	0.00	
09:36:42	100.00	0.00	
09:36:43	100.00	0.00	
09:36:44	100.00	0.00	
09:36:45	100.00	0.00	
09:36:46	100.00	0.00	
09:36:47	100.00	0.00	
09:36:48	100.00	0.00	
09:36:49	100.00	0.00	
09:36:50	100.00	0.00	
09:36:51	100.00	0.00	
09:36:52	100.00	0.00	
09:36:53	100.00	0.00	
09:36:54	100.00	0.00	
09:36:55	100.00	0.00	
09:36:56	100.00	0.00	
09:36:57	100.00	0.00	
09:36:58	100.00	0.00	
09:36:59	100.00	0.00	
09:37:00	100.00	0.00	

Trilobite Testing, Inc
 PO Box 362 Hays, KS 67601
 ph: 785-625-4778 fax: 785-625-5620

Jason Oil Co LLC
 4-8s-24w Graham,KS
 John Goddard #1
 DST # 3
 LKC "H-K"
 2012.11.04

DRILL STEM TEST REPORT



Jason Oil Co LLC
 PO Box 701
 Russell KS 67665+0701
 ATTN: Jeff Lawler

4-8s-24w Graham, KS
 John Goddard #1
 Job Ticket: IF
 DST#: 3
 Test Start: 2012.11.04 @ 09:35:05

GENERAL INFORMATION:

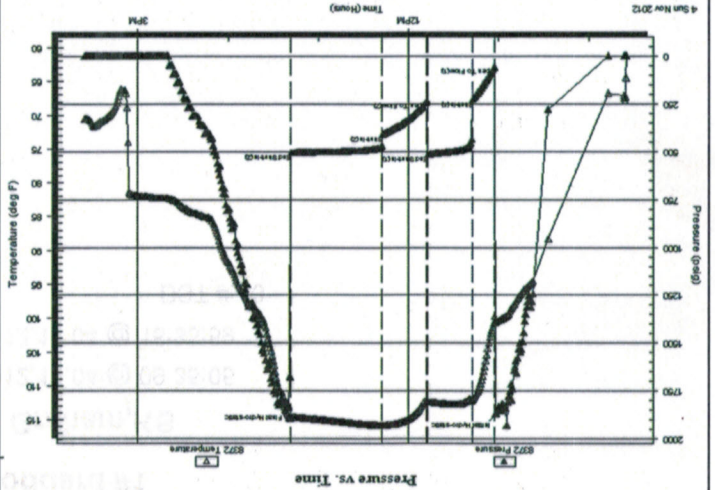
Formation: LKC "H-K"
 Deviated: No Whipstock:
 Time Tool Opened: 11:02:50
 Time Test Ended: 15:35:59
 Interval: 3768.00 ft (KB) To 3850.00 ft (KB) (TVD)
 Total Depth: 3850.00 ft (KB) (TVD)
 Hole Diameter: 7.88 inchesHole Condition: Poor
 Reference Elevations: 2402.00 ft (KB)
 2394.00 ft (CF)
 8.00 ft
 Test Type: Conventional Bottom Hole (Reset)
 Tester: Andy Carreira
 Unit No: 39

Serial #: 8372
 Outside
 Press@RunDepth: 409.86 psig @ 3772.00 ft (KB)
 Start Date: 2012.11.04
 End Date: 2012.11.04
 End Time: 09:35:05
 Start Time: 09:35:05
TEST COMMENT:
 IF: (15min) BOB 3 min
 IS: (30min) No Return
 FF: (30min) BOB 5 min.
 FSI: (60min) No Return

Capacity: 8000.00 psig
 Last Callb.: 2012.11.04
 Time On Btm: 2012.11.04 @ 11:01:30
 Time Off Btm: 2012.11.04 @ 13:19:50

PRESSURE SUMMARY

Annotation	Temp (deg F)	Pressure (psig)	Time (Min.)
Initial Hydro-static	100.54	1866.42	0
Open To Flow (1)	99.66	58.02	2
Shut-In(1)	112.20	229.20	17
End Shut-In(1)	112.36	516.32	46
Open To Flow (2)	112.26	236.08	47
Shut-In(2)	115.83	409.86	77
End Shut-In(2)	114.60	505.05	137
Final Hydro-static	114.41	1830.22	139



Recovery

Length (ft)	Description	Volume (bbl)
60.00	OSVM o=lr w=20% m=80%	0.58
318.00	OSMV o=lr m=10% w=90%	4.46
315.00	SOCMV o=5% m=20% w=75%	4.42
165.00	OCVM o=10% w=20% m=70%	2.31
2.00	CO o=100%	0.03

Recovery from multiple tests

Ref. No: IF

Printed: 2012.11.14 @ 11:38:27

Gas Rates

Choke (inches)	Pressure (psig)	Gas Rate (Mcf/d)



TRILOBITE TESTING, INC.

DRILL STEM TEST REPORT

Jason Oil Co LLC
 PO Box 701
 Russell KS 67665+0701
 ATTN: Jeff Lawler

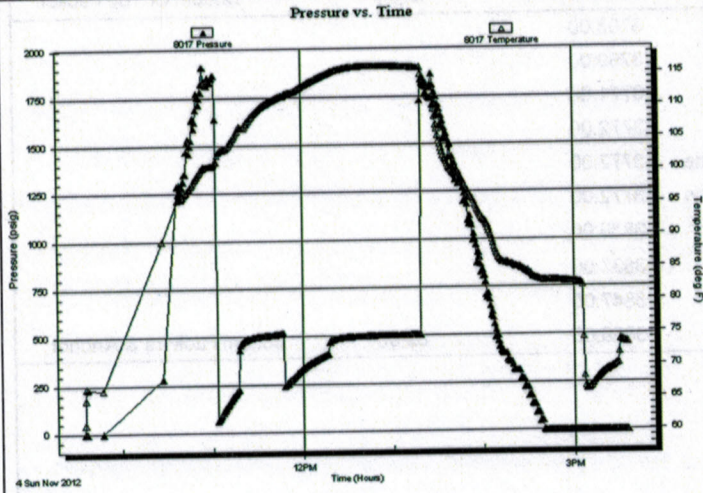
4-8s-24w Graham, KS
John Goddard #1
 Job Ticket: IF DST#: 3
 Test Start: 2012.11.04 @ 09:35:05

GENERAL INFORMATION:

Formation: LKC "H-K"
 Deviated: No Whipstock: ft (KB)
 Test Type: Conventional Bottom Hole (Reset)
 Time Tool Opened: 11:02:50 Tester: Andy Carreira
 Time Test Ended: 15:35:59 Unit No: 39
 Interval: 3768.00 ft (KB) To 3850.00 ft (KB) (TVD) Reference Elevations: 2402.00 ft (KB)
 Total Depth: 3850.00 ft (KB) (TVD) 2394.00 ft (CF)
 Hole Diameter: 7.88 inches Hole Condition: Poor KB to GR/CF: 8.00 ft

Serial #: 8017 Inside
 Press@RunDepth: psig @ 3772.00 ft (KB) Capacity: 8000.00 psig
 Start Date: 2012.11.04 End Date: 2012.11.04 Last Calib.: 2012.11.04
 Start Time: 09:35:05 End Time: 15:35:59 Time On Btm:
 Time Off Btm:

TEST COMMENT: IF:(15min) BOB 3 min
 ISl:(30min) No Return
 FF:(30min) BOB 5 min.
 FSl:(60min) No Return



PRESSURE SUMMARY

Time (Min.)	Pressure (psig)	Temp (deg F)	Annotation

Recovery

Length (ft)	Description	Volume (bbl)
60.00	OSVM o=tr w=20% m=80%	0.58
318.00	OSMW o=tr m=10% w=90%	4.46
315.00	SOCMW o=5% m=20% w=75%	4.42
165.00	OCVM o=10% w=20% m=70%	2.31
2.00	CO o=100%	0.03

* Recovery from multiple tests

Gas Rates

Choke (inches)	Pressure (psig)	Gas Rate (Mcf/d)



TRILOBITE TESTING, INC.

Jason Oil Co LLC
 PO Box 701
 Russell KS 67665+0701

ATTN: Jeff Lawler

4-8s-24w Graham, KS
 John Goddard #1
 Job Ticket: IF
 DST#: 3

Test Start: 2012.11.04 @ 09:35:05

TOOL DIAGRAM

DRILL STEM TEST REPORT

Tool Information

Drill Pipe:	Length: 3734.00 ft	Diameter: 3.80 inches	Volume: 52.38 bbl	Tool Weight: 2500.00 lb
Heavy Mt. Pipe:	Length: 0.00 ft	Diameter: 2.70 inches	Volume: 0.00 bbl	Weight set on Packer: 24000.00 lb
Drill Collar:	Length: 29.23 ft	Diameter: 2.25 inches	Volume: 0.14 bbl	Weight to Pull Loose: 56000.00 lb
Drill Pipe Above KB:	15.23 ft	Total Volume: 52.52 bbl	Tool Chased	0.00 ft
Depth to Top Packer:	3768.00 ft	String Weight: Initial	46000.00 lb	Final
Depth to Bottom Packer:	ft			51000.00 lb
Interval between Packers:	82.00 ft			
Tool Length:	102.00 ft			
Number of Packers:	2	Diameter:	6.75 inches	
Tool Comments:				

Tool Description Length (ft) Serial No. Position Depth (ft) Accum. Lengths

Change Over Sub	1.00			3749.00
Shut In Tool	5.00			3754.00
Hydraulic tool	5.00			3759.00
Packer	5.00			3764.00
Packer	4.00			3768.00
Stubb	1.00			3769.00
Perforations	2.00			3771.00
Change Over Sub	1.00			3772.00
Recorder	0.00	8017	Inside	3772.00
Recorder	0.00	8372	Outside	3772.00
Drill Pipe	64.00			3836.00
Change Over Sub	1.00			3837.00
Perforations	10.00			3847.00
Bullnose	3.00			3850.00
Total Tool Length: 102.00				
Bottom Packers & Anchor	82.00			



**TRILOBITE
TESTING, INC.**

DRILL STEM TEST REPORT

FLUID SUMMARY

Jason Oil Co LLC

4-8s-24w Graham,KS

PO Box 701
Russell KS 67665+0701

John Goddard #1

Job Ticket: IF

DST#: 3

ATTN: Jeff Lawler

Test Start: 2012.11.04 @ 09:35:05

Mud and Cushion Information

Mud Type: Gel Chem
Mud Weight: 9.00 lb/gal
Viscosity: 56.00 sec/qt
Water Loss: 7.98 in³
Resistivity: ohm.m
Salinity: 1000.00 ppm
Filter Cake: inches

Cushion Type:
Cushion Length: ft
Cushion Volume: bbl
Gas Cushion Type:
Gas Cushion Pressure: psig

Oil API: deg API
Water Salinity: 40000 ppm

Recovery Information

Recovery Table

Length ft	Description	Volume bbl
60.00	OSWM o=tr w=20% m=80%	0.575
318.00	OSMV o=tr m=10% w=90%	4.461
315.00	SOCMV o=5% m=20% w=75%	4.419
165.00	OCVM o=10% w=20% m=70%	2.315
2.00	CO o=100%	0.028

Total Length: 860.00 ft Total Volume: 11.798 bbl

Num Fluid Samples: 0

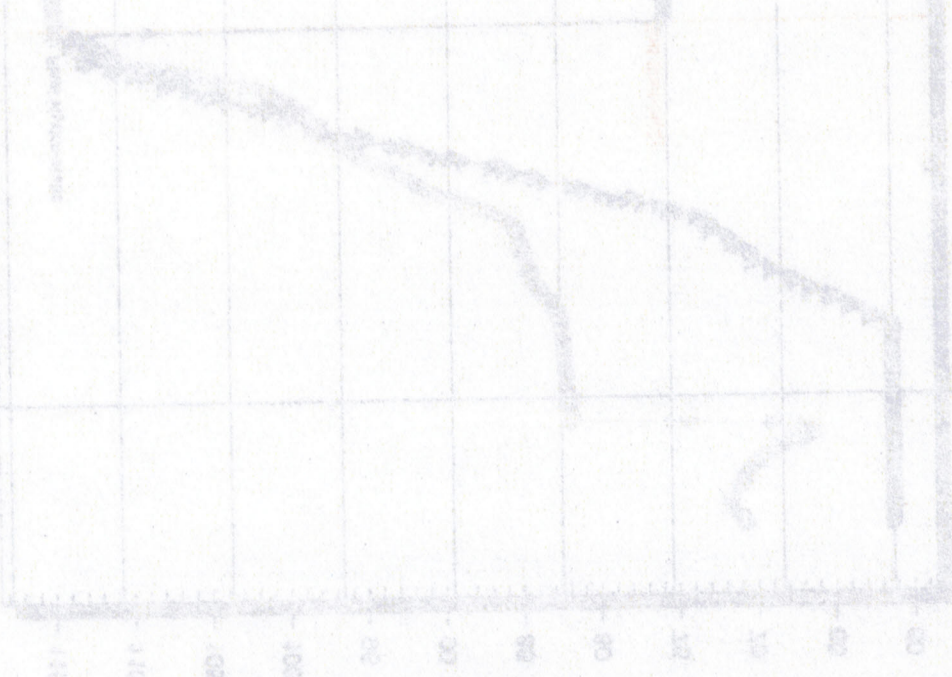
Num Gas Bombs: 0

Serial #:

Laboratory Name:

Laboratory Location:

Recovery Comments:



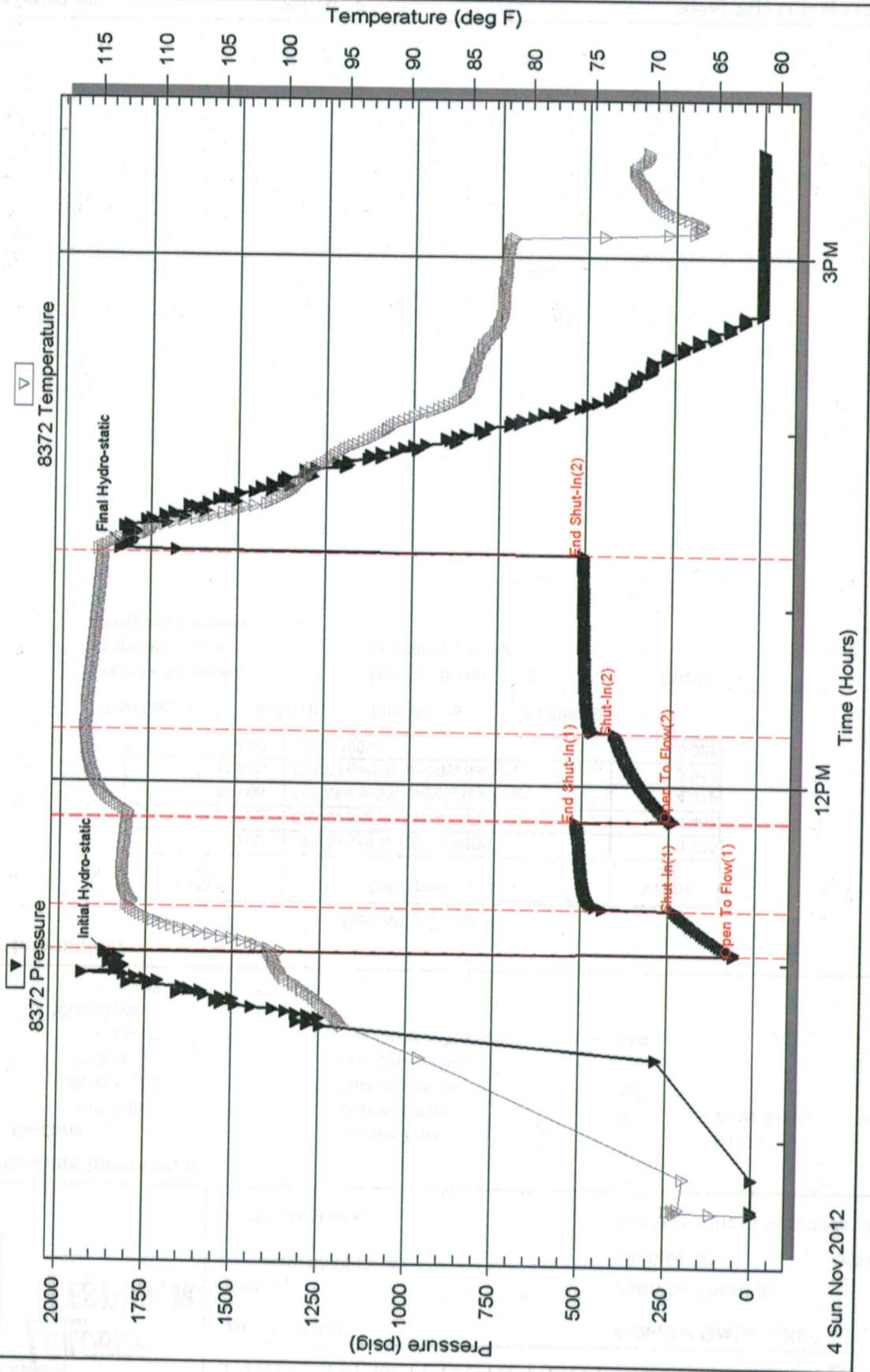
Serial #: 8372

Outside Jason Oil Co LLC

John Goddard #1

DST Test Number: 3

Pressure vs. Time



Trilobite Testing, Inc

Ref. No: IF

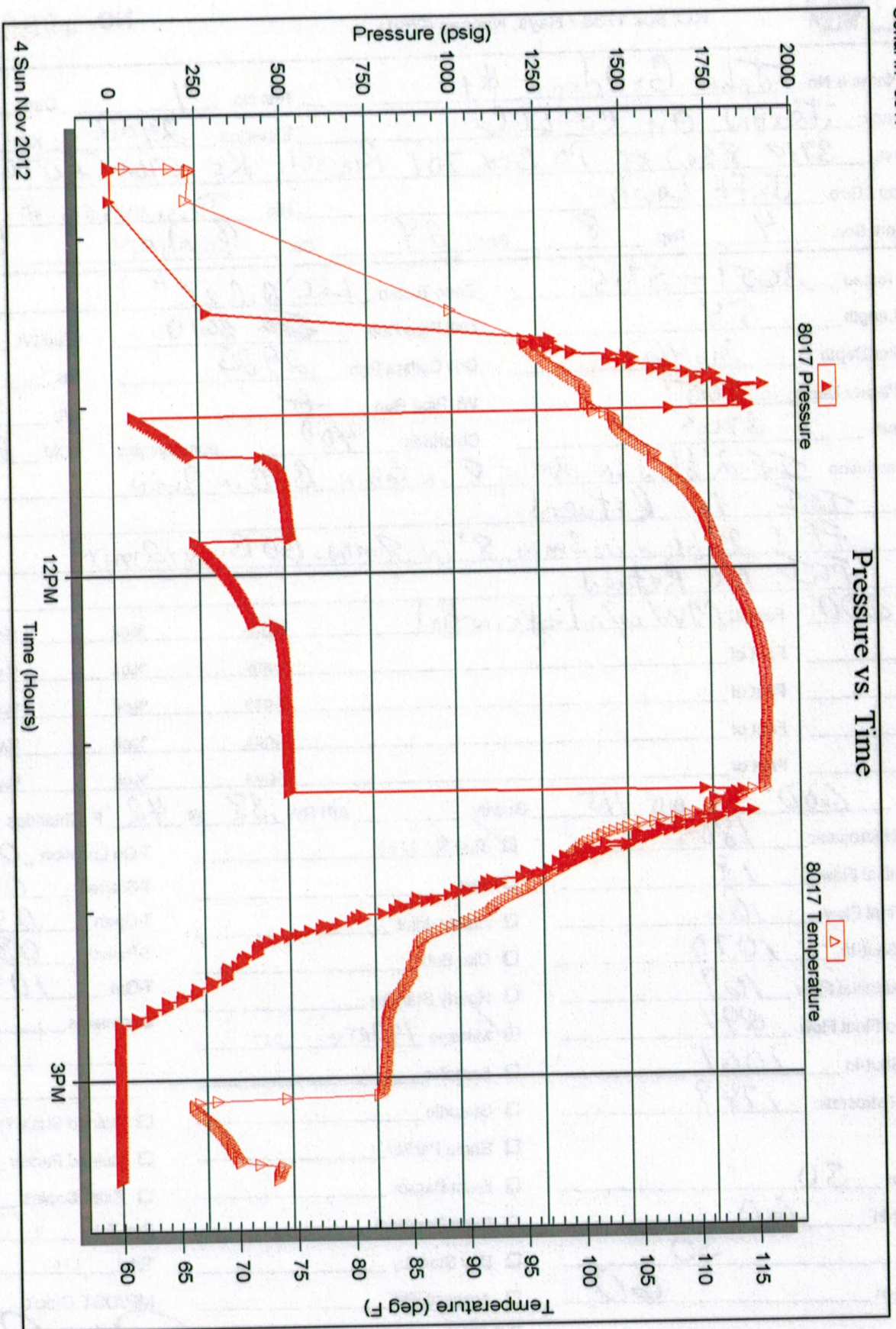
Printed: 2012.11.14 @ 11:38:31

Serial #: 8017

Inside Jason Oil Co LLC

John Goddard #1

DST Test Number: 3



Trilobite Testing, Inc

Ref. No: IF

Printed: 2012.11.14 @ 11:38:32



TRIOBITE TESTING INC.

P.O. Box 1733 • Hays, Kansas 67601

Test Ticket NO. 49366

Well Name & No. John Goodall #1
 Company JASON OIL CO LLC
 Address 3718 83rd St PO Box 701 Russell KS 67665+0701
 Co. Rep / Geo. Jeff Lawler
 Location: Sec. 4 Twp. 8 Rge. 24
 Co. Graham State KS
 Test No. 1 Date 11-3-12
 Elevation 2402 KB 2394 GL

Interval Tested	Anchor Length	Top Packer Depth	Bottom Packer Depth	Total Depth	Blow Description
3651-3705	54	3646	3651	3705	ISI: 2" blow in 2 min, 8" in 6 min, BOB in 9 min FSI: 2" blow in 3 min, 8" in 8 min, BOB in 12 min No Return

Rec	Feet of	%gas	%oil	%water	ppm
Rec	600				
Rec	600				
Rec	600				
Rec	600				
Rec	600				
Rec	600				

Gravity	Test	Jars	Safety Joint	Circ Sub	Hourly Standby	Mileage	Sampler	Sraddle	Shale Packer	Extra Packer	Extra Recorder	Day Standby	Accessibility	Sub Total
113°	1150					140 RT								1367

Rec Total	(A) Initial Hydrostatic	(B) First Initial Flow	(C) First Final Flow	(D) Initial Shut-In	(E) Second Initial Flow	(F) Second Final Flow	(G) Final Shut-In	(H) Final Hydrostatic	Initial Open	Initial Shut-In	Final Flow	Final Shut-In
600	1805	18	166	1070	169	294	1061	1749	30	60	30	60

Approved By _____
 Our Representative _____
 Sub Total 1367
 MP/DST Disc't _____
 Total 1367
 Sub Total 0
 Extra Copies _____
 Ruined Packer _____
 Ruined Shale Packer _____

Triobite Testing Inc. shall not be liable for damaged or destroyed property or personnel of the one for whom a test is made, or for any loss suffered or sustained, directly or indirectly, through the use of its equipment, or its statements or opinion concerning the results of any test, tools lost or damaged in the hole shall be paid for at cost by the party for whom the test is made.



TRILOBITE TESTING INC.

P.O. Box 1733 • Hays, Kansas 67601

Test Ticket

NO. 49367

Well Name & No. John Gosdard #1 Test No. 2 Date 11-3-12
 Company JASON Oil Co. LLC Elevation 2402 KB 2394 GL
 Address 3718 83rd St PO Box 701 Russell KS 67665 + 0701
 Co. Rep / Geo. JEFF Lawler Rig Discovery #1
 Location: Sec. 4 Twp. 8 Rge. 24 Co. Graham State Ks

Interval Tested 3701-3740 Zone Tested LKC "D-F"
 Anchor Length 39 Drill Pipe Run 3672 Mud Wt. 8.7
 Top Packer Depth 3696 Drill Collars Run 29.23 Vis 56
 Bottom Packer Depth 3701 Wt. Pipe Run 0 WL 8.0
 Total Depth 3740 Chlorides 1000 ppm System LCM 1 1/2"

Blow Description SP: 2" blow in 2min, 6" in 7min, 8" in 10min, BOB 17min.
ISI: NO Return
FF: 2" blow in 4min, 6" in 13min, 8" in 16min, BOB in 28min
FSI: NO Return

Rec	Feet of	%gas	%oil	%water	%mud
<u>10</u>	<u>Feet of 60 60</u>	<u>10%</u>	<u>90%</u>	<u></u>	<u></u>
<u>185</u>	<u>Feet of GOCWM</u>	<u>10%</u>	<u>10%</u>	<u>30%</u>	<u>50%</u>
<u>120</u>	<u>Feet of GOSMW</u>	<u>5%</u>	<u>TR</u>	<u>70%</u>	<u>25%</u>
Rec	Feet of	%gas	%oil	%water	%mud
Rec	Feet of	%gas	%oil	%water	%mud

Rec Total 315' BHT 109° Gravity 30 API RW 236 @ 40 °F Chlorides 56000 ppm

(A) Initial Hydrostatic 1812 Test 1150 T-On Location 16:06
 (B) First Initial Flow 19 Jars T-Started 16:37
 (C) First Final Flow ~~25~~ 98 Safety Joint T-Open 18:03
 (D) Initial Shut-In 1129 Circ Sub T-Pulled 21:03
 (E) Second Initial Flow 102 Hourly Standby T-Out 23:06
 (F) Second Final Flow 157 Mileage 140RT 217 Comments _____
 (G) Final Shut-In 1118 Sampler _____
 (H) Final Hydrostatic 1779 Straddle _____
 Shale Packer _____
 Ruined Shale Packer _____
 Ruined Packer _____
 Extra Packer _____
 Extra Copies _____

Initial Open 30 Extra Recorder _____ Sub Total 0
 Initial Shut-In 60 Day Standby _____ Total 1367
 Final Flow 30 Accessibility _____ MP/DST Disc't
 Final Shut-In 60 Sub Total 1367

Approved By _____

Our Representative Andy Carr

Trilobite Testing Inc. shall not be liable for damaged of any kind of the property or personnel of the one for whom a test is made, or for any loss suffered or sustained, directly or indirectly, through the use of its equipment, or its statements or opinion concerning the results of any test, tools lost or damaged in the hole shall be paid for at cost by the party for whom the test is made.



TRIOBITE TESTING INC.

P.O. Box 1733 • Hays, Kansas 67601

Test Ticket

NO. 49368

Well Name & No. John Goodred #1
 Company JASON OIL CO. LLC
 Address 3718 83rd St. P.O. Box 761 Russell KS 67665 + 0701
 Co. Rep / Geo. DEE HAWK
 Location: Sec. 4 Twp. 8 Rge. 24
 Co. Garhnm State KS

Interval Tested 3768-3850
 Anchor Length 82
 Top Packer Depth 3763
 Bottom Packer Depth 3768
 Total Depth 3850
 Blow Description IF: 808 3min
TSI: NO RETURN
FF: 808 5min
TSI: NO RETURN

Rec	Feet of	%gas	%oil	%water	%mud
Rec	2	100	0	0	0
Rec	165	10	20	70	0
Rec	315	5	75	20	0
Rec	318	72	90	10	0
Rec	60	72	80	80	0

Rec Total 860 BHT 114
 (A) Initial Hydrostatic 1866
 (B) First Initial Flow 58
 (C) First Final Flow 229
 (D) Initial Shut-In 576
 (E) Second Initial Flow 236
 (F) Second Final Flow 409
 (G) Final Shut-In 505
 (H) Final Hydrostatic 1830

Initial Open 15
 Initial Shut-In 30
 Final Flow 30
 Final Shut-In 60

Sub Total 1367
 MP/DST Disc't 0
 Total 1367

Approved By _____
 Our Representative [Signature]
 Triobite Testing Inc. shall not be liable for damaged or any kind of the property or personnel of the one for whom a test is made, or for any loss suffered or sustained, directly or indirectly, through the use of its equipment, or its statements or opinion concerning the results of any test, tools lost or damaged in the hole shall be paid for at cost by the party for whom the test is made.