



DRILL STEM TEST REPORT

Prepared For: **Carrie Exploration**

210 West 22nd Hays Kansas
67601

ATTN: Herb

John Roth C3

34-19s-11w-Barton

Start Date: 2012.11.27 @ 01:05:00

End Date: 2012.11.27 @ 08:41:30

Job Ticket #: 17873 DST #: 1

Superior Testers Enterprises LLC
PO Box 138 Great Bend KS 67530
1-800-792-6902

Printed: 2012.11.27 @ 07:05:04

Carrie Exploration

34-19s-11w-Barton

John Roth C3

DST # 1

Lansing A-C

2012.11.27



DRILL STEM TEST REPORT

Carrie Exploration
 210 West 22nd Hays Kansas
 67601
 ATTN: Herb

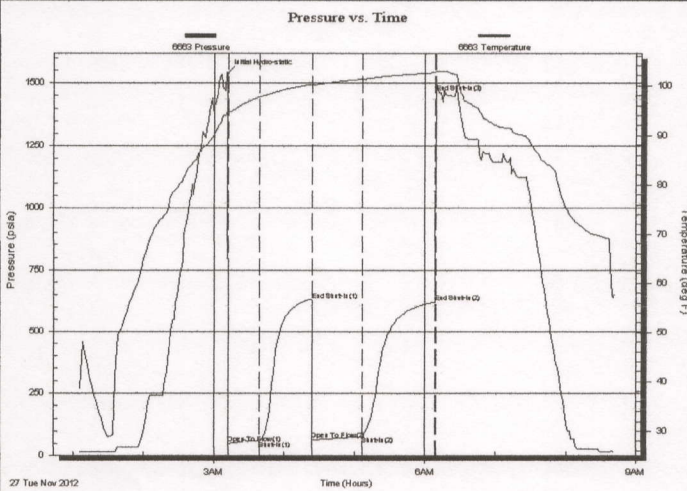
34-19s-11w-Barton
John Roth C3
 Job Ticket: 17873 **DST#: 1**
 Test Start: 2012.11.27 @ 01:05:00

GENERAL INFORMATION:

Formation: **Lansing A-C**
 Deviated: No Whipstock: ft (KB)
 Time Tool Opened: 03:12:00
 Time Test Ended: 08:41:30
 Test Type: Conventional Bottom Hole (Initial)
 Tester: Dustin Ellis
 Unit No: 3315-Great Bend-25
 Interval: **3047.00 ft (KB) To 3090.00 ft (KB) (TVD)**
 Total Depth: 3090.00 ft (KB) (TVD)
 Reference Elevations: 1785.00 ft (KB)
 1777.00 ft (CF)
 Hole Diameter: 7.88 inches Hole Condition: Fair
 KB to GR/CF: 8.00 ft

Serial #: 6663 Outside
 Press@RunDepth: 77.87 psia @ 3086.00 ft (KB) Capacity: 5000.00 psia
 Start Date: 2012.11.27 End Date: 2012.11.27 Last Calib.: 2012.11.27
 Start Time: 01:05:00 End Time: 08:41:30 Time On Btm: 2012.11.27 @ 03:11:30
 Time Off Btm:

TEST COMMENT: 1st Open 30 minutes Fair building blow blew 4.5 inches .
 1st Shut in 45 minutes No blow back
 2nd Open 45 minutes Weak blow blew 1/2 inch. into bucket of water.
 2nd Shut in 60 minutes No blow back



PRESSURE SUMMARY

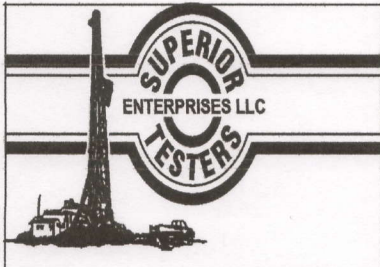
| Time (Min.) | Pressure (psia) | Temp (deg F) | Annotation |
|-------------|-----------------|--------------|----------------------|
| 0 | 1538.94 | 95.03 | Initial Hydro-static |
| 1 | 48.78 | 94.70 | Open To Flow (1) |
| 28 | 59.16 | 97.70 | Shut-In(1) |
| 72 | 626.73 | 100.24 | End Shut-In(1) |
| 73 | 63.19 | 100.12 | Open To Flow (2) |
| 115 | 77.87 | 101.33 | Shut-In(2) |
| 178 | 619.54 | 102.61 | End Shut-In(2) |
| 178 | 1464.11 | 102.79 | End Shut-In(3) |

Recovery

| Length (ft) | Description | Volume (bbl) |
|-------------|-------------------------------|--------------|
| 65.00 | Muddy water Mud 20% Water 80% | 0.91 |
| 0.00 | Chlorides 36,000@56degree | 0.00 |
| | | |
| | | |
| | | |

Gas Rates

| Choke (inches) | Pressure (psia) | Gas Rate (Mcf/d) |
|----------------|-----------------|------------------|
| | | |



DRILL STEM TEST REPORT

TOOL DIAGRAM

Carrie Exploration
 210 West 22nd Hays Kansas
 67601
 ATTN: Herb

34-19s-11w-Barton
John Roth C3
 Job Ticket: 17873 **DST#: 1**
 Test Start: 2012.11.27 @ 01:05:00

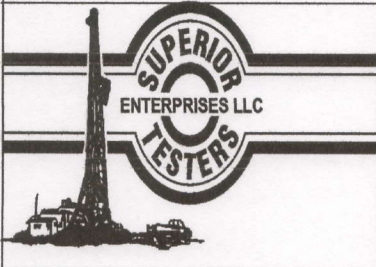
Tool Information

| | | | | |
|---------------------------|--------------------|-----------------------|--------------------------------|------------------------------------|
| Drill Pipe: | Length: 3042.00 ft | Diameter: 3.80 inches | Volume: 42.67 bbl | Tool Weight: 2000.00 lb |
| Heavy Wt. Pipe: | Length: 0.00 ft | Diameter: 0.00 inches | Volume: 0.00 bbl | Weight set on Packer: 20000.00 lb |
| Drill Collar: | Length: 0.00 ft | Diameter: 0.00 inches | Volume: 0.00 bbl | Weight to Pull Loose: 45000.00 lb |
| | | | <u>Total Volume: 42.67 bbl</u> | Tool Chased 0.00 ft |
| Drill Pipe Above KB: | 15.00 ft | | | String Weight: Initial 43000.00 lb |
| Depth to Top Packer: | 3047.00 ft | | | Final 43000.00 lb |
| Depth to Bottom Packer: | ft | | | |
| Interval between Packers: | 43.00 ft | | | |
| Tool Length: | 63.00 ft | | | |
| Number of Packers: | 2 | Diameter: 6.75 inches | | |

Tool Comments:

| Tool Description | Length (ft) | Serial No. | Position | Depth (ft) | Accum. Lengths |
|------------------|-------------|------------|----------|------------|------------------------------------|
| Shut-In Tool | 5.00 | | | 3032.00 | |
| Hydraulic Tool | 5.00 | | | 3037.00 | |
| Packer | 5.00 | | | 3042.00 | 20.00 Bottom Of Top Packer |
| Packer | 5.00 | | | 3047.00 | |
| Anchor | 38.00 | | | 3085.00 | |
| Recorder | 1.00 | 6663 | Outside | 3086.00 | |
| Recorder | 1.00 | 8400 | Inside | 3087.00 | |
| Bull Plug | 3.00 | | | 3090.00 | 43.00 Bottom Packers & Anchor |

Total Tool Length: 63.00



DRILL STEM TEST REPORT

FLUID SUMMARY

Carrie Exploration

34-19s-11w-Barton

210 West 22nd Hays Kansas
67601

John Roth C3

Job Ticket: 17873

DST#: 1

ATTN: Herb

Test Start: 2012.11.27 @ 01:05:00

Mud and Cushion Information

| | | | |
|----------------------------------|----------------------------|-----------------|---------|
| Mud Type: Gel Chem | Cushion Type: | Oil API: | deg API |
| Mud Weight: 9.00 lb/gal | Cushion Length: ft | Water Salinity: | ppm |
| Viscosity: 48.00 sec/qt | Cushion Volume: bbl | | |
| Water Loss: 9.60 in ³ | Gas Cushion Type: | | |
| Resistivity: 0.40 ohm.m | Gas Cushion Pressure: psia | | |
| Salinity: 5000.00 ppm | | | |
| Filter Cake: 1.00 inches | | | |

Recovery Information

Recovery Table

| Length ft | Description | Volume bbl |
|--------------|-------------------------------|---------------|
| 65.00 | Muddy water Mud 20% Water 80% | 0.912 |
| 0.00 | Chlorides 36,000@56degree | 0.000 |

Total Length: 65.00 ft Total Volume: 0.912 bbl

Num Fluid Samples: 0 Num Gas Bombs: 0 Serial #:

Laboratory Name: Laboratory Location:

Recovery Comments:

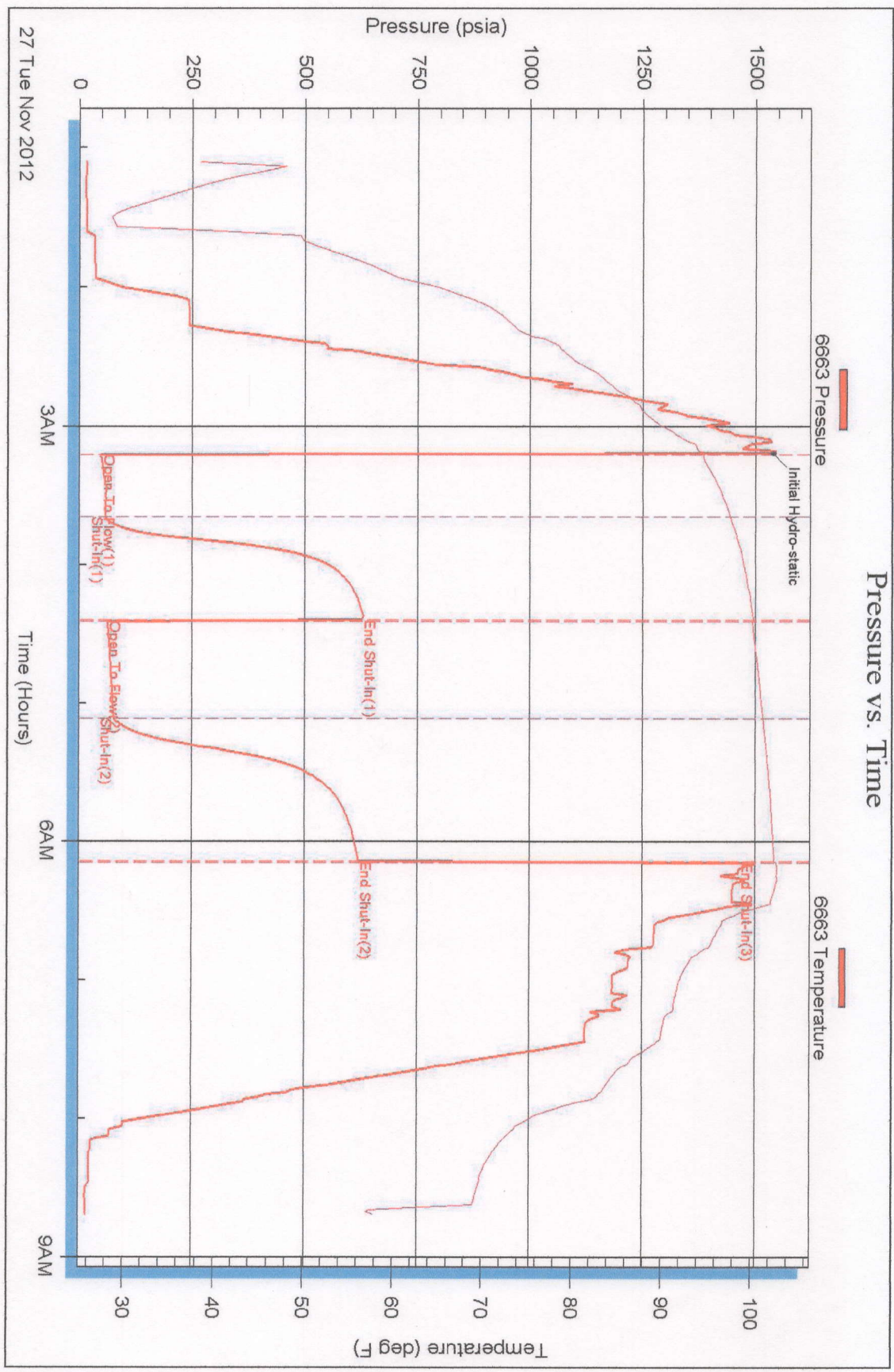
Serial #: 6663

Outside Carrie Exploration

John Roth C3

DST Test Number: 1

Pressure vs. Time



Superior Testers Enterprises LLC

Ref. No: 17873

Printed: 2012.11.27 @ 07:05:05

Serial #: 8400

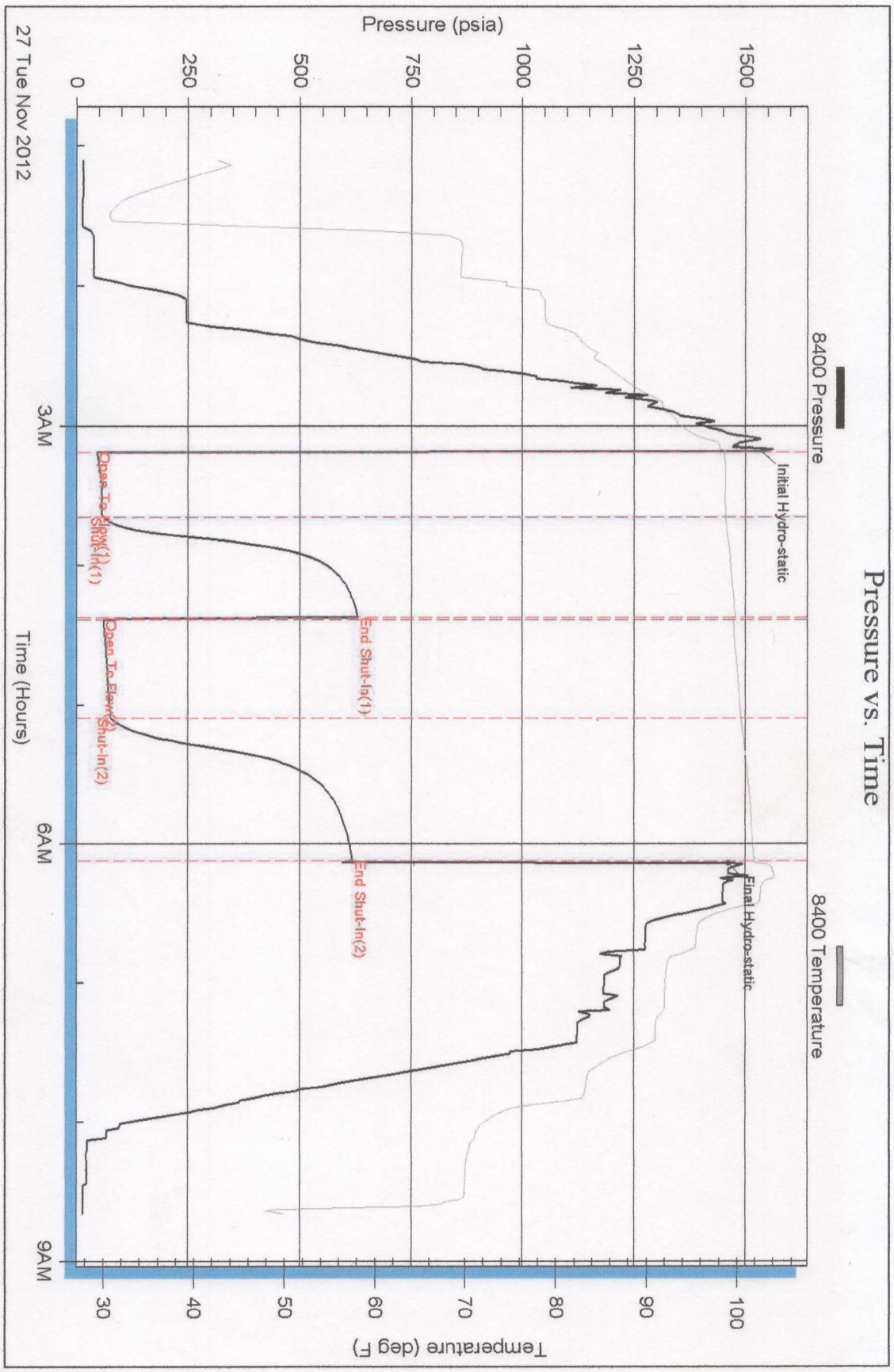
Inside

Carrie Exploration

John Roth C3

DST Test Number: 1

Pressure vs. Time



Superior Testers Enterprises LLC

Ref. No: 17873

Printed: 2012.11.27 @ 07:05:05