



DRILL STEM TEST REPORT

Prepared For: **Carrie Exploration**

210 West 22nd Hays Kansas
67601

ATTN: Herb

John Roth C3

34-19s-11w-Barton

Start Date: 2012.11.29 @ 03:46:00

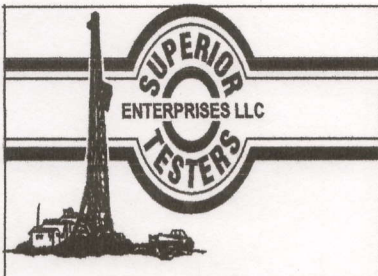
End Date: 2012.11.29 @ 09:37:00

Job Ticket #: 17701 DST #: 4

Superior Testers Enterprises LLC
PO Box 138 Great Bend KS 67530
1-800-792-6902

Printed: 2012.11.29 @ 09:58:15

Carrie Exploration 34-19s-11w-Barton John Roth C3 DST # 4 Arbuckle 2012.11.29



DRILL STEM TEST REPORT

Carrie Exploration
 210 West 22nd Hays Kansas
 67601
 ATTN: Herb

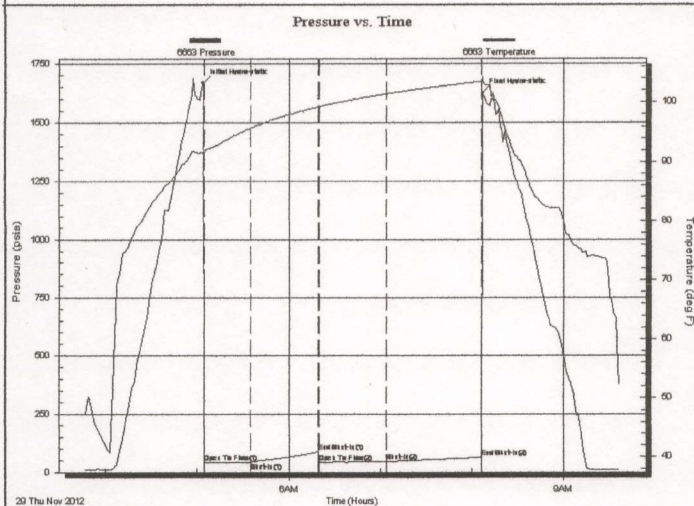
34-19s-11w-Barton
John Roth C3
 Job Ticket: 17701 DST#: 4
 Test Start: 2012.11.29 @ 03:46:00

GENERAL INFORMATION:

Formation: **Arbukle**
 Deviated: No Whipstock: ft (KB)
 Time Tool Opened: 05:04:30
 Time Test Ended: 09:37:00
 Interval: **3300.00 ft (KB) To 3328.00 ft (KB) (TVD)**
 Total Depth: 3328.00 ft (KB) (TVD)
 Hole Diameter: 7.88 inches Hole Condition: Fair
 Test Type: Conventional Bottom Hole (Initial)
 Tester: Dustin Ellis
 Unit No: 3315-Great Bend-25
 Reference Elevations: 1785.00 ft (KB)
 1777.00 ft (CF)
 KB to GR/CF: 8.00 ft

Serial #: 6663 **Inside**
 Press@RunDepth: 44.13 psia @ 3324.00 ft (KB) Capacity: 5000.00 psia
 Start Date: 2012.11.29 End Date: 2012.11.29 Last Calib.: 2012.11.29
 Start Time: 03:46:00 End Time: 09:37:00 Time On Btm: 2012.11.29 @ 05:04:00
 Time Off Btm: 2012.11.29 @ 08:07:00

TEST COMMENT: 1st Open 30 minutes Weak blow blew 1/2 inch.
 1st Shut in 45 minutes No blow back
 2nd Open 45 minutes Weak blow blew 1/2 inch.
 2nd Shut in 60 minutes No blow back



PRESSURE SUMMARY

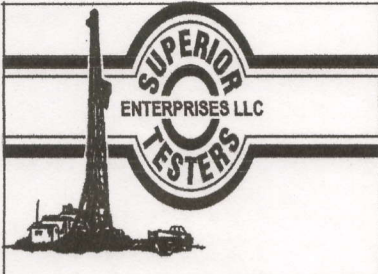
Time (Min.)	Pressure (psia)	Temp (deg F)	Annotation
0	1667.10	91.57	Initial Hydro-static
1	40.23	91.49	Open To Flow (1)
31	41.95	95.65	Shut-In(1)
76	87.03	99.26	End Shut-In(1)
76	42.41	99.28	Open To Flow (2)
121	44.13	101.40	Shut-In(2)
182	62.18	103.39	End Shut-In(2)
183	1624.02	103.75	Final Hydro-static

Recovery

Length (ft)	Description	Volume (bbl)
15.00	Slightly oil cut mud 4% Oil 96% Mud	0.21

Gas Rates

Choke (inches)	Pressure (psia)	Gas Rate (Mcf/d)



DRILL STEM TEST REPORT

Carrie Exploration
 210 West 22nd Hays Kansas
 67601
 ATTN: Herb

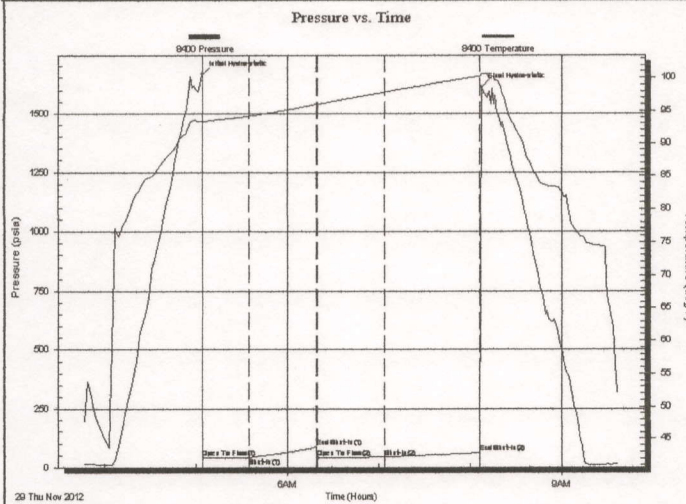
34-19s-11w-Barton
John Roth C3
 Job Ticket: 17701 DST#: 4
 Test Start: 2012.11.29 @ 03:46:00

GENERAL INFORMATION:

Formation: **Arbukle**
 Deviated: No Whipstock: ft (KB)
 Time Tool Opened: 05:04:30
 Time Test Ended: 09:37:00
 Interval: **3300.00 ft (KB) To 3328.00 ft (KB) (TVD)**
 Total Depth: 3328.00 ft (KB) (TVD)
 Hole Diameter: 7.88 inches Hole Condition: Fair
 Test Type: Conventional Bottom Hole (Initial)
 Tester: Dustin Ellis
 Unit No: 3315-Great Bend-25
 Reference Elevations: 1785.00 ft (KB)
 1777.00 ft (CF)
 KB to GRVCF: 8.00 ft

Serial #: 8400 **Outside**
 Press@RunDepth: 60.45 psia @ 3325.00 ft (KB) Capacity: 5000.00 psia
 Start Date: 2012.11.29 End Date: 2012.11.29 Last Calib.: 2012.11.29
 Start Time: 03:46:00 End Time: 09:37:30 Time On Btm: 2012.11.29 @ 05:04:00
 Time Off Btm: 2012.11.29 @ 08:07:30

TEST COMMENT: 1st Open 30 minutes Weak blow blew 1/2 inch.
 1st Shut in 45 minutes No blow back'
 2nd Open 45 minutes Weak blow blew 1/2 inch.
 2nd Shut in 60 minutes No blow back



PRESSURE SUMMARY

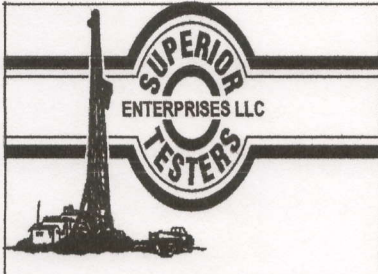
Time (Min.)	Pressure (psia)	Temp (deg F)	Annotation
0	1665.55	93.50	Initial Hydro-static
1	38.76	93.14	Open To Flow (1)
31	40.01	94.14	Shut-In(1)
76	85.20	96.01	End Shut-In(1)
76	40.85	96.01	Open To Flow (2)
121	42.46	97.86	Shut-In(2)
183	60.45	100.20	End Shut-In(2)
184	1612.13	100.64	Final Hydro-static

Recovery

Length (ft)	Description	Volume (bbl)
15.00	Slightly oil cut mud 4%OI/96% Mud	0.21

Gas Rates

Choke (inches)	Pressure (psia)	Gas Rate (Mcf/d)



DRILL STEM TEST REPORT

TOOL DIAGRAM

Carrie Exploration
 210 West 22nd Hays Kansas
 67601

34-19s-11w-Barton

John Roth C3

Job Ticket: 17701

DST#: 4

ATTN: Herb

Test Start: 2012.11.29 @ 03:46:00

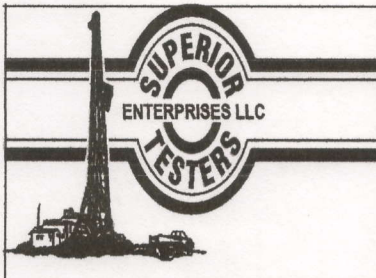
Tool Information

Drill Pipe:	Length: 3295.00 ft	Diameter: 3.80 inches	Volume: 46.22 bbl	Tool Weight: 2000.00 lb
Heavy Wt. Pipe:	Length: 0.00 ft	Diameter: 0.00 inches	Volume: 0.00 bbl	Weight set on Packer: 20000.00 lb
Drill Collar:	Length: 0.00 ft	Diameter: 0.00 inches	Volume: 0.00 bbl	Weight to Pull Loose: 45000.00 lb
			<u>Total Volume: 46.22 bbl</u>	Tool Chased 0.00 ft
Drill Pipe Above KB:	15.00 ft			String Weight: Initial 44000.00 lb
Depth to Top Packer:	3300.00 ft			Final 44000.00 lb
Depth to Bottom Packer:	ft			
Interval between Packers:	28.00 ft			
Tool Length:	48.00 ft			
Number of Packers:	2	Diameter: 6.75 inches		

Tool Comments:

Tool Description	Length (ft)	Serial No.	Position	Depth (ft)	Accum. Lengths
Shut-In Tool	5.00			3285.00	
Hydraulic Tool	5.00			3290.00	
Packer	5.00			3295.00	20.00 Bottom Of Top Packer
Packer	5.00			3300.00	
Anchor	23.00			3323.00	
Recorder	1.00	6663	Inside	3324.00	
Recorder	1.00	8400	Outside	3325.00	
Bullnose	3.00			3328.00	28.00 Bottom Packers & Anchor

Total Tool Length: 48.00



DRILL STEM TEST REPORT

FLUID SUMMARY

Carrie Exploration

34-19s-11w-Barton

210 West 22nd Hays Kansas
67601

John Roth C3

Job Ticket: 17701

DST#: 4

ATTN: Herb

Test Start: 2012.11.29 @ 03:46:00

Mud and Cushion Information

Mud Type: Gel Chem

Cushion Type:

Oil API:

deg API

Mud Weight: 9.00 lb/gal

Cushion Length:

ft

Water Salinity:

ppm

Viscosity: 48.00 sec/qt

Cushion Volume:

bbbl

Water Loss: 9.60 in³

Gas Cushion Type:

Resistivity: 5000.00 ohm.m

Gas Cushion Pressure:

psia

Salinity: ppm

Filter Cake: 1.00 inches

Recovery Information

Recovery Table

Length ft	Description	Volume bbl
15.00	Slightly oil cut mud 4%Oil96% Mud	0.210

Total Length:

15.00 ft

Total Volume:

0.210 bbl

Num Fluid Samples: 0

Num Gas Bombs: 0

Serial #:

Laboratory Name:

Laboratory Location:

Recovery Comments:

Serial #: 6663

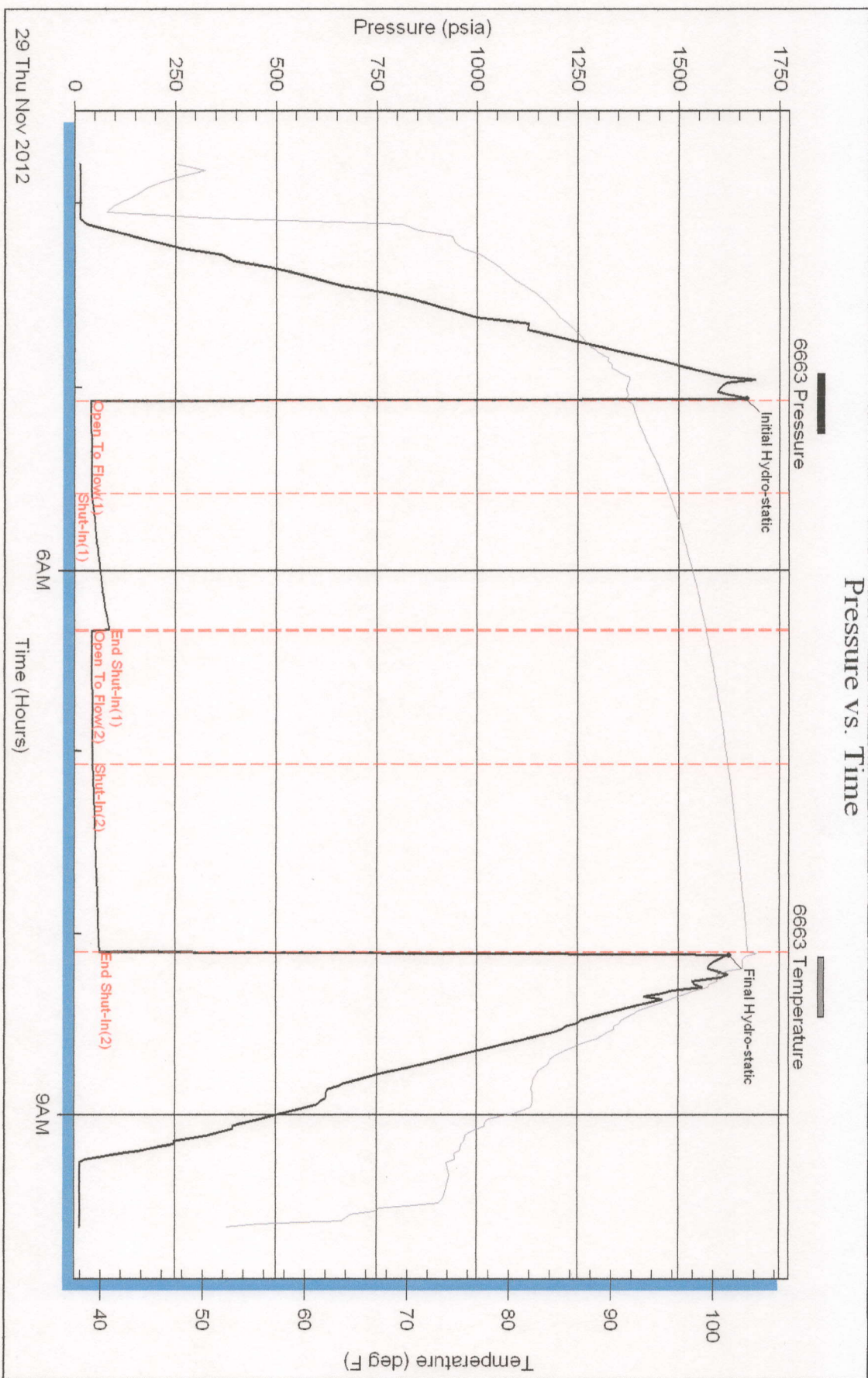
Inside

Carrie Exploration

John Roth C3

DST Test Number: 4

Pressure vs. Time



Superior Testers Enterprises LLC

Ref. No: 17701

Printed: 2012.11.29 @ 09:58:17

Serial #: 8400

Outside Carrie Exploration

John Rath C3

DST Test Number: 4

Pressure vs. Time

