



DRILL STEM TEST REPORT

Prepared For: **Carrie Exploration**

210 West 22nd Hays Kansas
67601

ATTN: Herb

John Roth C3

34-19s-11w-Barton

Start Date: 2012.11.29 @ 03:01:00

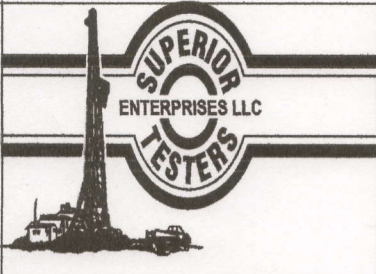
End Date: 2012.11.29 @ 09:28:30

Job Ticket #: 17702 DST #: 5

Superior Testers Enterprises LLC
PO Box 138 Great Bend KS 67530
1-800-792-6902

Printed: 2012.11.29 @ 21:54:29

Carrie Exploration 34-19s-11w-Barton John Roth C3 DST # 5 Arbuckle 2012.11.29



DRILL STEM TEST REPORT

Carrie Exploration
 210 West 22nd Hays Kansas
 67601
 ATTN: Herb

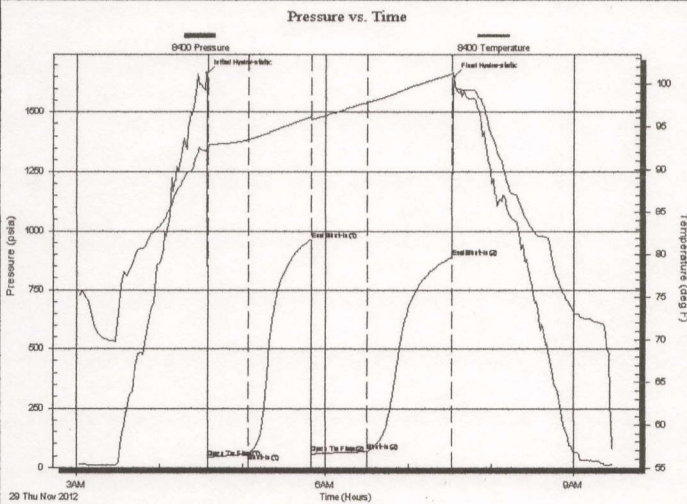
34-19s-11w-Barton
John Roth C3
 Job Ticket: 17702 **DST#: 5**
 Test Start: 2012.11.29 @ 03:01:00

GENERAL INFORMATION:

Formation: **Arbuckle**
 Deviated: **No Whipstock:** ft (KB)
 Time Tool Opened: 04:34:30
 Time Test Ended: 09:28:30
 Interval: **3300.00 ft (KB) To 3333.00 ft (KB) (TVD)**
 Total Depth: **3333.00 ft (KB) (TVD)**
 Hole Diameter: **7.88 inches** Hole Condition: **Fair**
 Test Type: **Conventional Bottom Hole (Initial)**
 Tester: **Dustin Ellis**
 Unit No: **3315-Great-Bend-25**
 Reference Elevations: **1785.00 ft (KB)**
1777.00 ft (CF)
 KB to GR/CF: **8.00 ft**

Serial #: 8400 Outside
 Press@RunDepth: **888.67 psia @ 3330.00 ft (KB)** Capacity: **5000.00 psia**
 Start Date: **2012.11.29** End Date: **2012.11.29** Last Calib.: **2012.11.29**
 Start Time: **03:01:00** End Time: **09:28:30** Time On Btm: **2012.11.29 @ 04:34:00**
 Time Off Btm: **2012.11.29 @ 07:33:00**

TEST COMMENT: 1st Open 30 minutes Fair building blow blew 5.5 inches
 1st Shut in 45 minutes No blow back
 2nd Open 45 minutes Fair building blow blew bottom bucket 28 minutes.
 2nd Shut in 60 minutes No blow back



PRESSURE SUMMARY

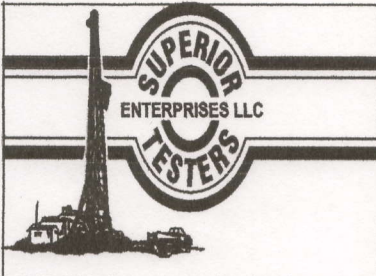
Time (Min.)	Pressure (psia)	Temp (deg F)	Annotation
0	1663.41	92.46	Initial Hydro-static
1	42.17	92.31	Open To Flow (1)
31	58.95	93.49	Shut-In(1)
76	964.26	96.10	End Shut-In(1)
76	59.62	95.82	Open To Flow (2)
116	69.18	97.86	Shut-In(2)
178	888.67	101.13	End Shut-In(2)
179	1647.37	100.51	Final Hydro-static

Recovery

Length (ft)	Description	Volume (bbl)
15.00	Clean Oil 100%	0.21
55.00	Oil cut mud 20% Oil Mud 80%	0.77

Gas Rates

	Choke (inches)	Pressure (psia)	Gas Rate (Mcf/d)



DRILL STEM TEST REPORT

Carrie Exploration
 210 West 22nd Hays Kansas
 67601
 ATTN: Herb

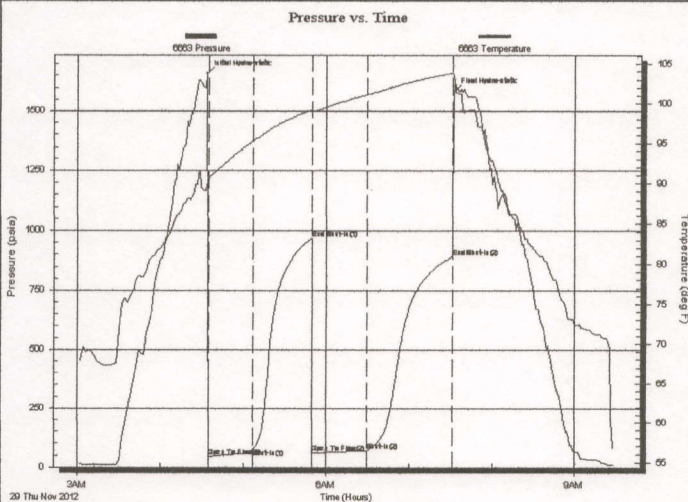
34-19s-11w-Barton
John Roth C3
 Job Ticket: 17702 **DST#: 5**
 Test Start: 2012.11.29 @ 03:01:00

GENERAL INFORMATION:

Formation: **Arbuckle**
 Deviated: No Whipstock: ft (KB)
 Time Tool Opened: 04:34:30
 Time Test Ended: 09:28:30
 Interval: **3300.00 ft (KB) To 3333.00 ft (KB) (TVD)**
 Total Depth: 3333.00 ft (KB) (TVD)
 Hole Diameter: 7.88 inches Hole Condition: Fair
 Test Type: Conventional Bottom Hole (Initial)
 Tester: Dustin Ellis
 Unit No: 3315-Great-Bend-25
 Reference Elevations: 1785.00 ft (KB)
 1777.00 ft (CF)
 KB to GR/CF: 8.00 ft

Serial #: 6663 **Inside**
 Press@RunDepth: 69.52 psia @ 3329.00 ft (KB) Capacity: 5000.00 psia
 Start Date: 2012.11.29 End Date: 2012.11.29 Last Calib.: 2012.11.29
 Start Time: 03:01:00 End Time: 09:28:30 Time On Btm: 2012.11.29 @ 04:33:30
 Time Off Btm: 2012.11.29 @ 07:32:30

TEST COMMENT: 1st Open 30 minutes Fair building blow blew 5.5 inches
 1st Shut in 45 minutes No blow back
 2nd Open 45 minutes Fair building blow blew bottom bucket 28 minutes.
 2nd Shut in 60 minutes No blow back



PRESSURE SUMMARY

Time (Min.)	Pressure (psia)	Temp (deg F)	Annotation
0	1657.54	89.74	Initial Hydro-static
1	43.54	90.55	Open To Flow (1)
34	75.45	95.28	Shut-In(1)
76	966.82	99.20	End Shut-In(1)
77	60.59	99.00	Open To Flow (2)
116	69.52	101.14	Shut-In(2)
178	891.02	103.82	End Shut-In(2)
179	1582.96	103.72	Final Hydro-static

Recovery

Length (ft)	Description	Volume (bbl)
15.00	Clean Oil 100%	0.21
55.00	Oil cut mud 20% Oil Mud 80%	0.77

Gas Rates

	Choke (inches)	Pressure (psia)	Gas Rate (Mcf/d)



DRILL STEM TEST REPORT

TOOL DIAGRAM

Carrie Exploration
 210 West 22nd Hays Kansas
 67601
 ATTN: Herb

34-19s-11w-Barton
John Roth C3
 Job Ticket: 17702 **DST#: 5**
 Test Start: 2012.11.29 @ 03:01:00

Tool Information

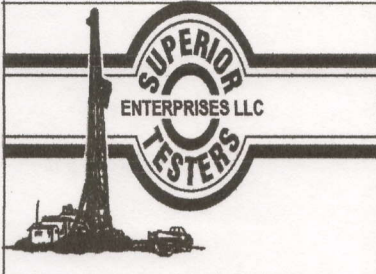
Drill Pipe:	Length: 3295.00 ft	Diameter: 3.80 inches	Volume: 46.22 bbl	Tool Weight: 2000.00 lb
Heavy Wt. Pipe:	Length: 0.00 ft	Diameter: 0.00 inches	Volume: 0.00 bbl	Weight set on Packer: 20000.00 lb
Drill Collar:	Length: 0.00 ft	Diameter: 0.00 inches	Volume: 0.00 bbl	Weight to Pull Loose: 45000.00 lb
			<u>Total Volume: 46.22 bbl</u>	Tool Chased 0.00 ft
Drill Pipe Above KB:	15.00 ft			String Weight: Initial 43000.00 lb
Depth to Top Packer:	3300.00 ft			Final 43000.00 lb
Depth to Bottom Packer:	ft			
Interval between Packers:	33.00 ft			
Tool Length:	53.00 ft			
Number of Packers:	2	Diameter: 6.75 inches		

Tool Comments:

Tool Description

Tool Description	Length (ft)	Serial No.	Position	Depth (ft)	Accum. Lengths
Shut-In Tool	5.00			3285.00	
Hydraulic Tool	5.00			3290.00	
Packer	5.00			3295.00	20.00 Bottom Of Top Packer
Packer	5.00			3300.00	
Anchor	28.00			3328.00	
Recorder	1.00	6663	Inside	3329.00	
Recorder	1.00	8400	Outside	3330.00	
Bullnose	3.00			3333.00	33.00 Bottom Packers & Anchor

Total Tool Length: 53.00



DRILL STEM TEST REPORT

FLUID SUMMARY

Carrie Exploration
 210 West 22nd Hays Kansas
 67601
 ATTN: Herb

34-19s-11w-Barton
John Roth C3
 Job Ticket: 17702 DST#: 5
 Test Start: 2012.11.29 @ 03:01:00

Mud and Cushion Information

Mud Type: Gel Chem	Cushion Type:	Oil API:	deg API
Mud Weight: 9.00 lb/gal	Cushion Length: ft	Water Salinity:	ppm
Viscosity: 48.00 sec/qt	Cushion Volume: bbl		
Water Loss: 9.60 in ³	Gas Cushion Type:		
Resistivity: ohm.m	Gas Cushion Pressure: psia		
Salinity: 5000.00 ppm			
Filter Cake: 1.00 inches			

Recovery Information

Recovery Table

Length ft	Description	Volume bbl
15.00	Clean Oil 100%	0.210
55.00	Oil cut mud 20% Oil Mud 80%	0.772

Total Length: 70.00 ft Total Volume: 0.982 bbl

Num Fluid Samples: 0 Num Gas Bombs: 0 Serial #:

Laboratory Name: Laboratory Location:

Recovery Comments:

Serial #: 6663

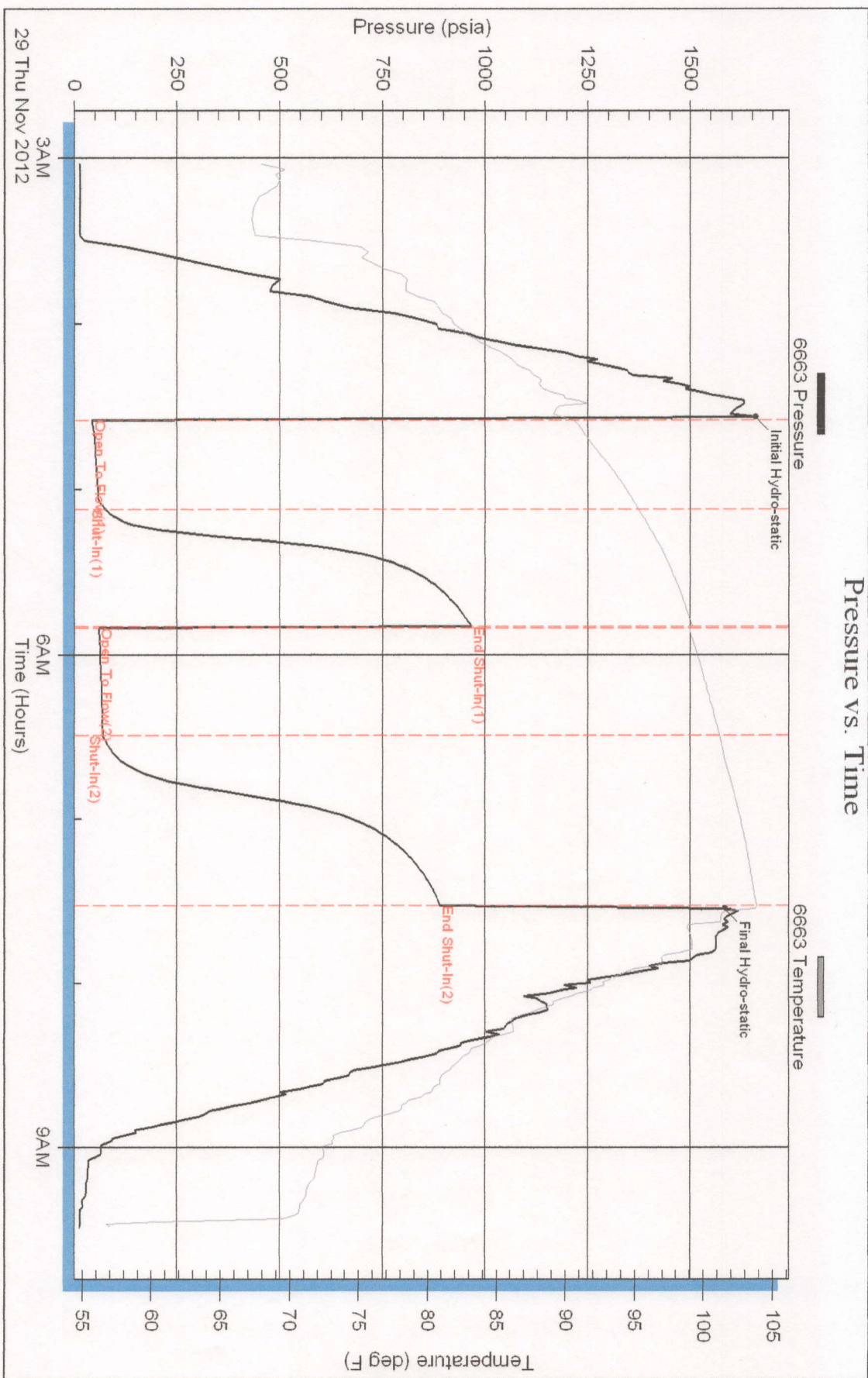
Inside

Carrie Exploration

John Rath C3

DST Test Number: 5

Pressure vs. Time



Superior Testers Enterprises LLC

Ref. No: 17702

Printed: 2012.11.29 @ 21:54:30

Serial #: 8400

Outside Carrie Exploration

John Rath C3

DST Test Number: 5

Pressure vs. Time

