



TRILOBITE TESTING, INC.

DRILL STEM TEST REPORT

Cobalt Energy, LLC.

1/11S/25W-Trego

115 S. Belmont #12
Wichita, KS 67208

Terry "A" #2-1

Job Ticket: 48619

DST#: 1

ATTN: Corey Baker

Test Start: 2012.11.16 @ 07:59:15

GENERAL INFORMATION:

Formation: **LKC "C"**

Deviated: No Whipstock: ft (KB)

Time Tool Opened: 09:22:25

Time Test Ended: 13:15:15

Test Type: Conventional Bottom Hole (Initial)

Tester: Dustin Rash

Unit No: 38

Interval: 3776.00 ft (KB) To 3794.00 ft (KB) (TVD)

Reference Elevations: 2143.00 ft (KB)

Total Depth: 3794.00 ft (KB) (TVD)

2138.00 ft (CF)

Hole Diameter: 7.88 inches Hole Condition: Fair

KB to GR/CF: 5.00 ft

Serial #: 8354

Inside

Press @ Run Depth: 24.87 psig @ 3779.00 ft (KB)

Capacity: 8000.00 psig

Start Date: 2012.11.16

End Date:

2012.11.16

Last Calib.:

2012.11.16

Start Time:

07:59:15

End Time:

13:15:15

Time On Btm:

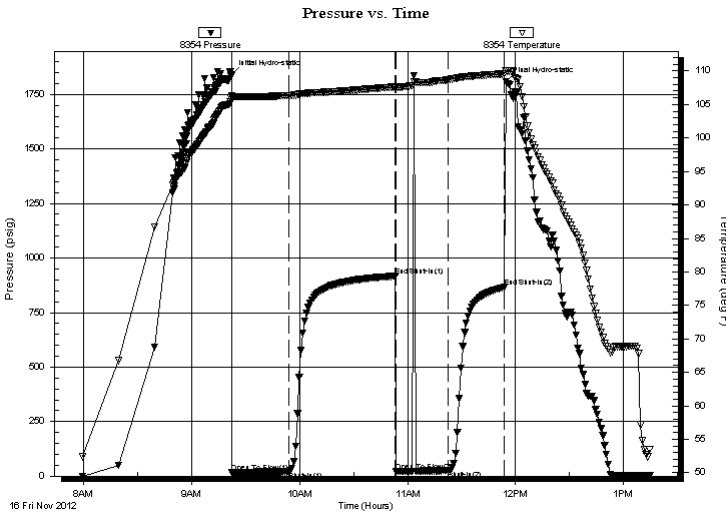
2012.11.16 @ 09:22:05

Time Off Btm:

2012.11.16 @ 11:54:45

TEST COMMENT: IF-Weak surface blow . Died @ 30 seconds.
ISI-No Return.
FF-No Blow . Flushed Tool. No Blow .
FSI-No Return.

PRESSURE SUMMARY



Time (Min.)	Pressure (psig)	Temp (deg F)	Annotation
0	1839.37	106.28	Initial Hydro-static
1	16.67	106.09	Open To Flow (1)
32	20.03	106.34	Shut-In(1)
92	916.76	107.64	End Shut-In(1)
92	20.93	107.51	Open To Flow (2)
121	24.87	108.70	Shut-In(2)
152	865.43	109.57	End Shut-In(2)
153	1807.84	110.10	Final Hydro-static

Recovery

Length (ft)	Description	Volume (bbl)
10.00	100%Mud	0.05
0.00		0.00

Gas Rates

	Choke (inches)	Pressure (psig)	Gas Rate (Mcf/d)



**TRILOBITE
TESTING, INC.**

DRILL STEM TEST REPORT

FLUID SUMMARY

Cobalt Energy, LLC.

1/11S/25W-Trego

115 S. Belmont #12
Wichita, KS 67208

Terry "A" #2-1

Job Ticket: 48619

DST#: 1

ATTN: Corey Baker

Test Start: 2012.11.16 @ 07:59:15

Mud and Cushion Information

Mud Type: Gel Chem

Cushion Type:

Oil API:

deg API

Mud Weight: 9.00 lb/gal

Cushion Length:

ft

Water Salinity:

ppm

Viscosity: 60.00 sec/qt

Cushion Volume:

bbbl

Water Loss: 7.80 in³

Gas Cushion Type:

Resistivity: ohm.m

Gas Cushion Pressure:

psig

Salinity: 2300.00 ppm

Filter Cake: inches

Recovery Information

Recovery Table

Length ft	Description	Volume bbl
10.00	100%Mud	0.049
0.00		0.000

Total Length: 10.00 ft Total Volume: 0.049 bbl

Num Fluid Samples: 0

Num Gas Bombs: 0

Serial #:

Laboratory Name:

Laboratory Location:

Recovery Comments: Oil specs betw een shut-in and hydraulic tool.

Serial #: 8354

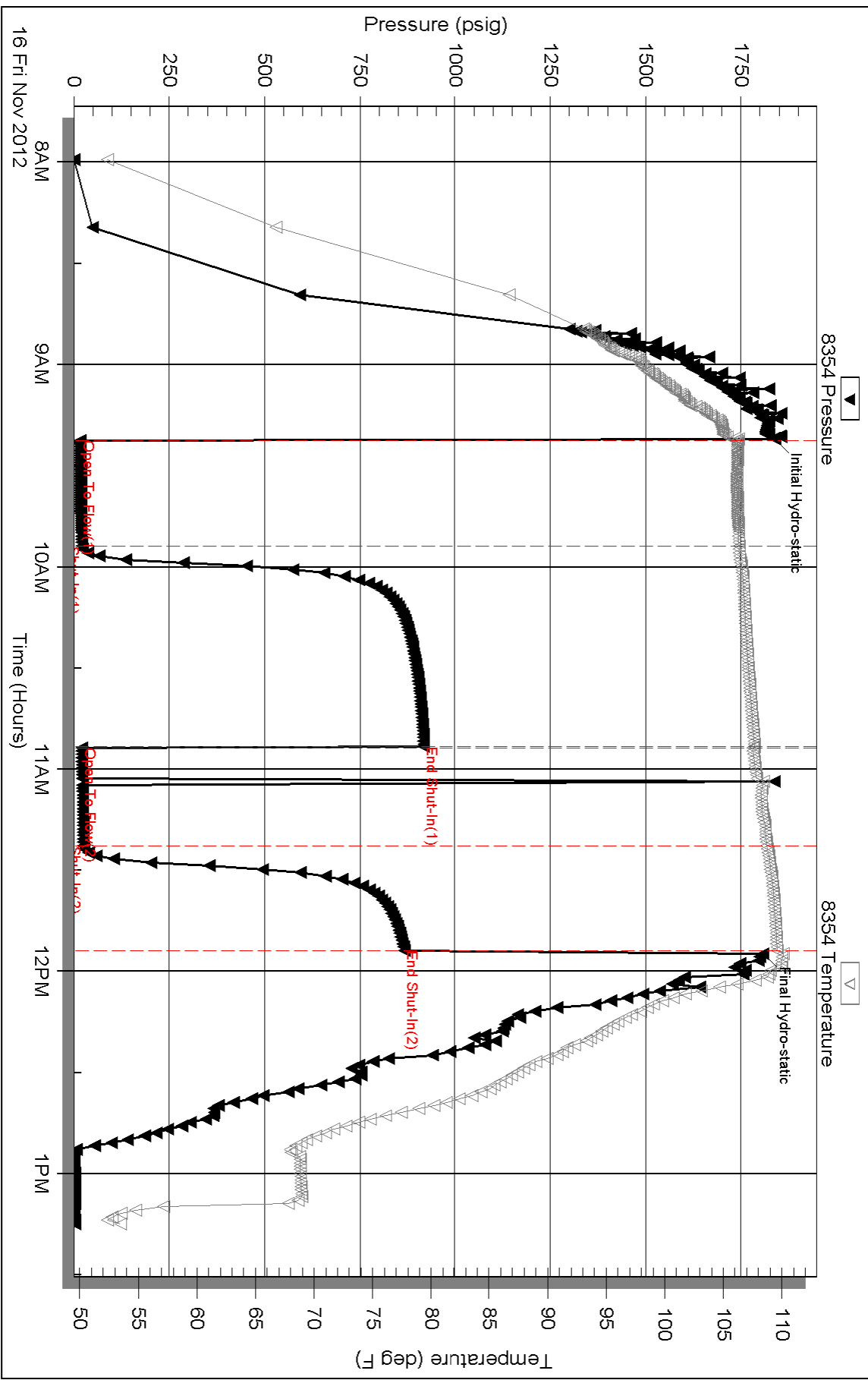
Inside

Cobalt Energy, LLC.

Terry "A" #2-1

DST Test Number: 1

Pressure vs. Time

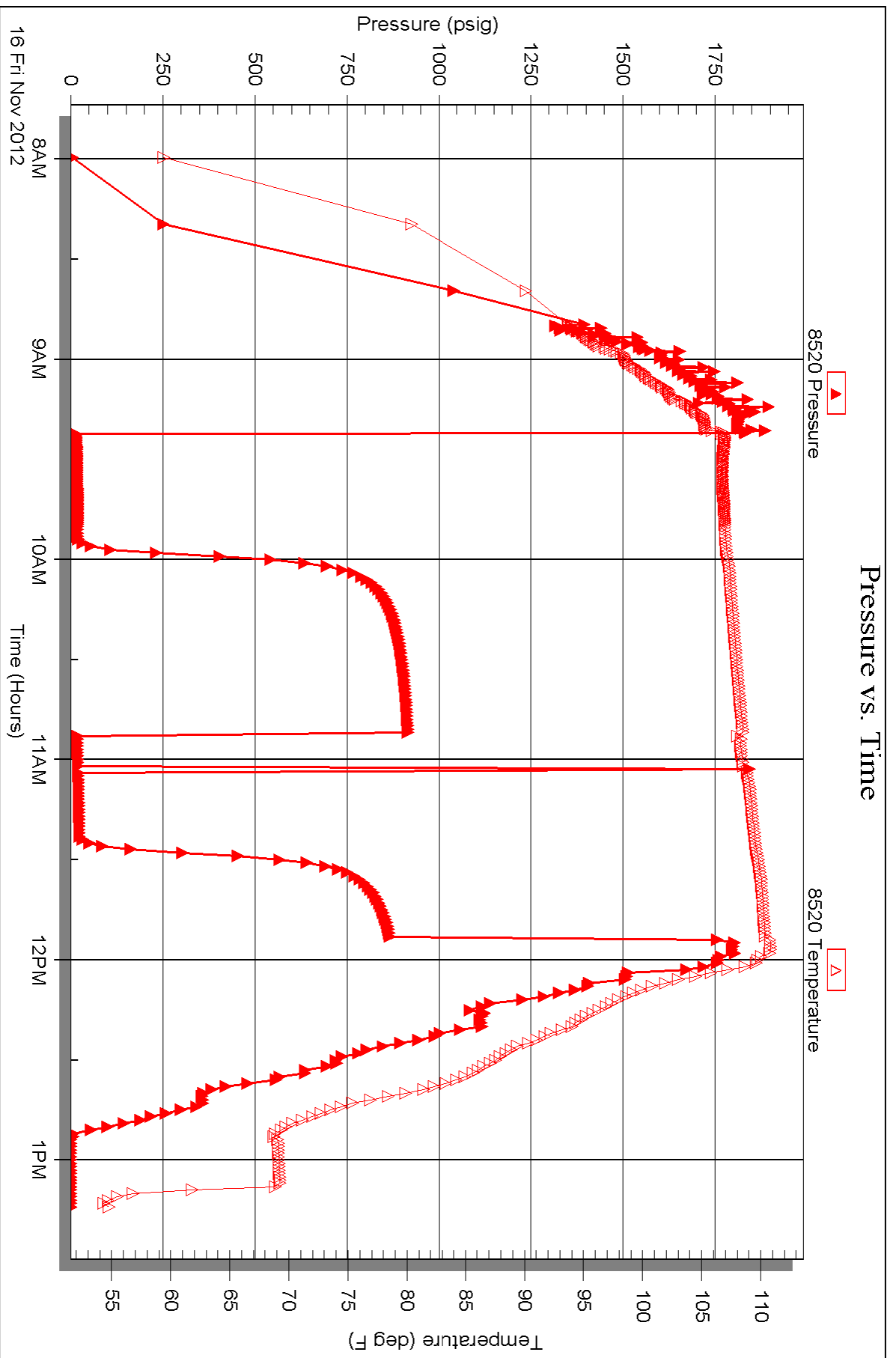


Serial #: 8520

Outside Cobalt Energy, LLC.

Terry "A" #2-1

DST Test Number: 1





TRILOBITE TESTING, INC.

DRILL STEM TEST REPORT

Cobalt Energy, LLC.

1/11S/25W-Trego

115 S. Belmont #12
Wichita, KS 67208

Terry "A" #2-1

Job Ticket: 48620

DST#: 2

ATTN: Corey Baker

Test Start: 2012.11.16 @ 20:13:30

GENERAL INFORMATION:

Formation: **LKC "C-D"**

Deviated: No Whipstock: ft (KB)

Time Tool Opened: 21:41:50

Time Test Ended: 03:45:30

Test Type: Conventional Bottom Hole (Initial)

Tester: Dustin Rash

Unit No: 38

Interval: 3776.00 ft (KB) To 3835.00 ft (KB) (TVD)

Reference Elevations: 2418.00 ft (KB)

Total Depth: 3835.00 ft (KB) (TVD)

2413.00 ft (CF)

Hole Diameter: 7.88 inches Hole Condition: Fair

KB to GR/CF: 5.00 ft

Serial #: 8354

Inside

Press @ Run Depth: 50.52 psig @ 3815.00 ft (KB)

Capacity: 8000.00 psig

Start Date: 2012.11.16

End Date:

2012.11.17

Last Calib.: 2012.11.17

Start Time: 20:23:30

End Time:

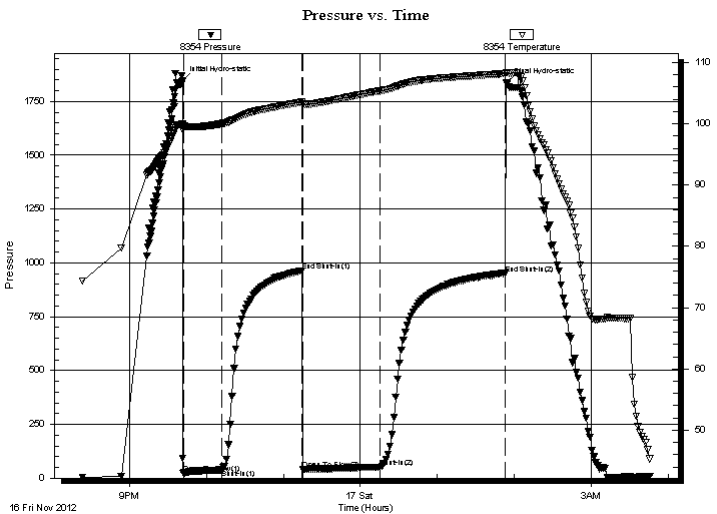
03:45:30

Time On Btm: 2012.11.16 @ 21:41:30

Time Off Btm: 2012.11.17 @ 01:54:00

TEST COMMENT: IF-Weak building blow . Built to 4 inches.
ISI-No Return.
FF-Weak building blow . Built to 5&1/2 inches.
FSI-No Return.

PRESSURE SUMMARY



Time (Min.)	Pressure (psig)	Temp (deg F)	Annotation
0	1845.72	99.96	Initial Hydro-static
1	21.95	99.45	Open To Flow (1)
31	38.50	100.03	Shut-In(1)
93	963.49	103.55	End Shut-In(1)
94	39.18	103.33	Open To Flow (2)
154	50.52	105.38	Shut-In(2)
252	950.27	108.18	End Shut-In(2)
253	1838.80	108.38	Final Hydro-static

Recovery

Length (ft)	Description	Volume (bbl)
70.00	5%Oil/95%Mud	0.71

Gas Rates

Choke (inches)	Pressure (psig)	Gas Rate (Mcf/d)



**TRILOBITE
TESTING, INC.**

DRILL STEM TEST REPORT

FLUID SUMMARY

Cobalt Energy, LLC.

1/11S/25W-Trego

115 S. Belmont #12
Wichita, KS 67208

Terry "A" #2-1

Job Ticket: 48620

DST#: 2

ATTN: Corey Baker

Test Start: 2012.11.16 @ 20:13:30

Mud and Cushion Information

Mud Type: Gel Chem

Cushion Type:

Oil API:

deg API

Mud Weight: 9.00 lb/gal

Cushion Length:

ft

Water Salinity:

ppm

Viscosity: 53.00 sec/qt

Cushion Volume:

bbbl

Water Loss: 6.40 in³

Gas Cushion Type:

Resistivity: ohm.m

Gas Cushion Pressure:

psig

Salinity: 2000.00 ppm

Filter Cake: inches

Recovery Information

Recovery Table

Length ft	Description	Volume bbl
70.00	5%Oil/95%Mud	0.709

Total Length: 70.00 ft Total Volume: 0.709 bbl

Num Fluid Samples: 0

Num Gas Bombs: 0

Serial #:

Laboratory Name:

Laboratory Location:

Recovery Comments:

Serial #: 8354

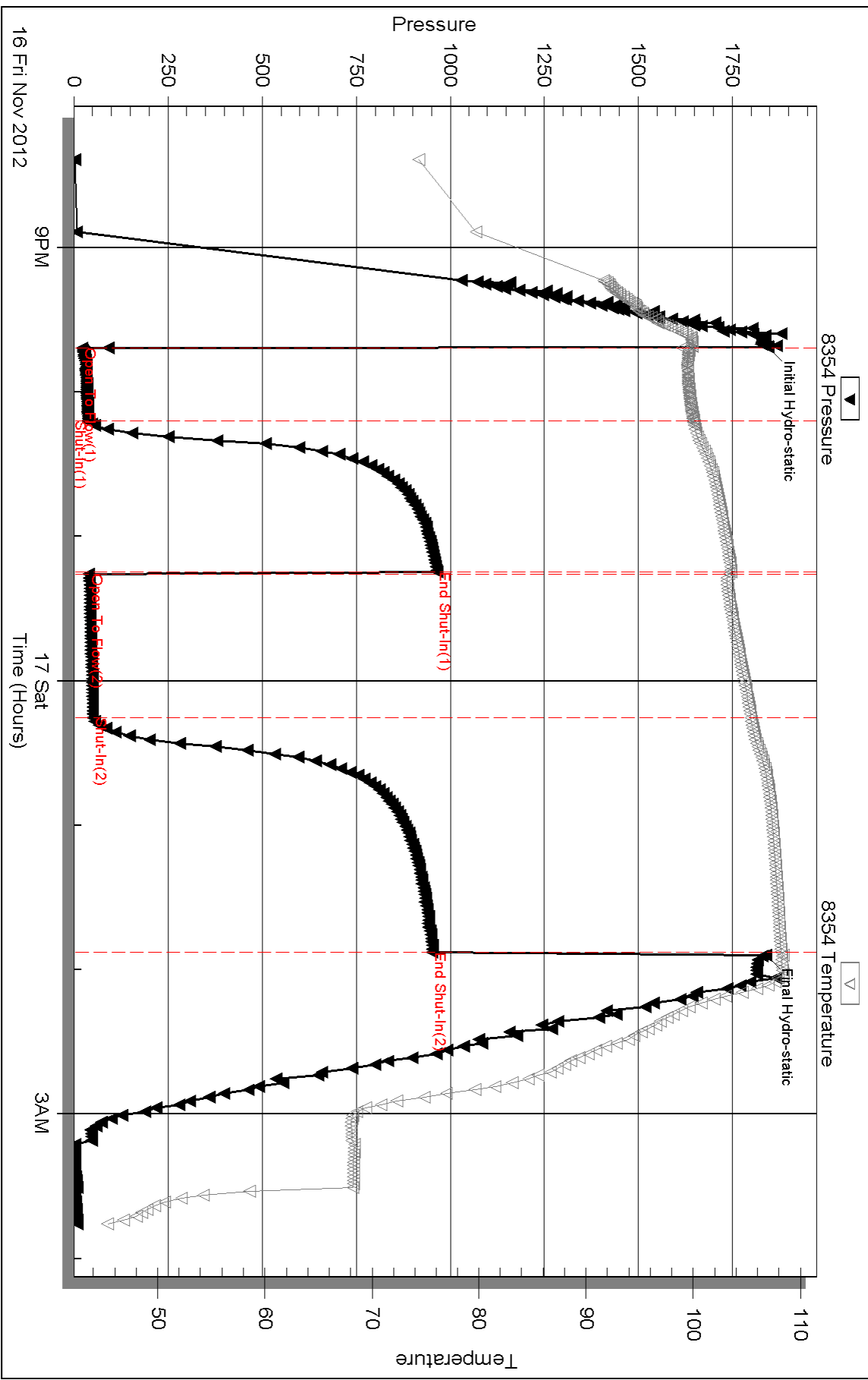
Inside

Cobalt Energy, LLC.

Terry "A" #2-1

DST Test Number: 2

Pressure vs. Time



Triobite Testing, Inc

Ref. No: 48620

Printed: 2012.11.17 @ 06:04:17



TRILOBITE TESTING, INC.

DRILL STEM TEST REPORT

Cobalt Energy, LLC.

1/11S/25W-Trego

115 S. Belmont #12
Wichita, KS 67208

Terry "A" #2-1

Job Ticket: 48621

DST#: 3

ATTN: Corey Baker

Test Start: 2012.11.17 @ 12:56:30

GENERAL INFORMATION:

Formation: **LKC "H"**

Deviated: No Whipstock: ft (KB)

Time Tool Opened: 14:17:40

Time Test Ended: 19:46:00

Test Type: Conventional Bottom Hole (Initial)

Tester: Dustin Rash

Unit No: 66

Interval: 3880.00 ft (KB) To 3914.00 ft (KB) (TVD)

Total Depth: 3914.00 ft (KB) (TVD)

Hole Diameter: 7.88 inches Hole Condition: Fair

Reference Elevations: 2418.00 ft (KB)

2413.00 ft (CF)

KB to GR/CF: 5.00 ft

Serial #: 8354

Inside

Press @ Run Depth: 43.21 psig @ 3883.00 ft (KB)

Start Date: 2012.11.17

End Date:

2012.11.17

Start Time: 13:06:30

End Time:

19:46:00

Capacity: 8000.00 psig

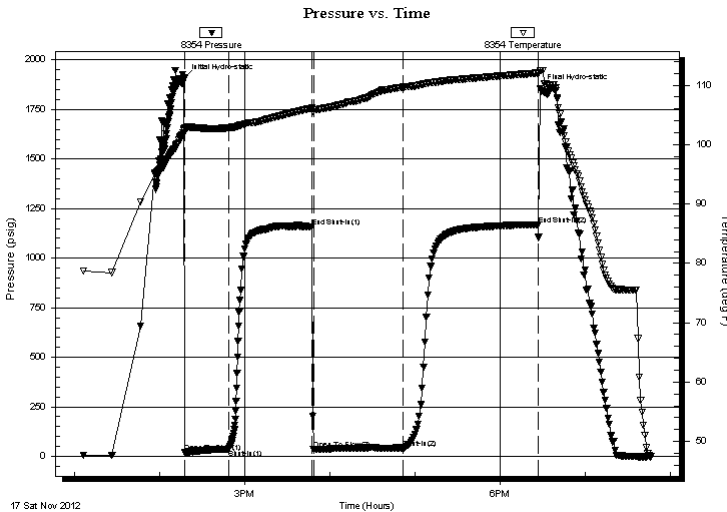
Last Calib.: 2012.11.17

Time On Btm: 2012.11.17 @ 14:17:30

Time Off Btm: 2012.11.17 @ 18:28:00

TEST COMMENT: IF-Weak building blow . Built to 3&1/2 inches.
ISI-No Return.
FF-Weak building blow . Built to 2&1/2 inches.
FSI-No Return.

PRESSURE SUMMARY



Time (Min.)	Pressure (psig)	Temp (deg F)	Annotation
0	1908.32	102.78	Initial Hydro-static
1	19.17	101.98	Open To Flow (1)
32	37.67	102.84	Shut-In(1)
90	1156.66	106.14	End Shut-In(1)
91	36.86	105.92	Open To Flow (2)
154	43.21	109.65	Shut-In(2)
249	1169.45	112.05	End Shut-In(2)
251	1856.42	112.50	Final Hydro-static

Recovery

Length (ft)	Description	Volume (bbl)
25.00	5%Oil/10%Water/85%Mud	0.12
30.00	5%Oil/95%Mud	0.38

Gas Rates

	Choke (inches)	Pressure (psig)	Gas Rate (Mcf/d)



**TRILOBITE
TESTING, INC.**

DRILL STEM TEST REPORT

FLUID SUMMARY

Cobalt Energy, LLC.

1/11S/25W-Trego

115 S. Belmont #12
Wichita, KS 67208

Terry "A" #2-1

Job Ticket: 48621

DST#: 3

ATTN: Corey Baker

Test Start: 2012.11.17 @ 12:56:30

Mud and Cushion Information

Mud Type: Gel Chem

Cushion Type:

Oil API:

deg API

Mud Weight: 9.00 lb/gal

Cushion Length:

ft

Water Salinity:

6800 ppm

Viscosity: 50.00 sec/qt

Cushion Volume:

bbbl

Water Loss: 6.80 in³

Gas Cushion Type:

Resistivity: 1.19 ohm.m

Gas Cushion Pressure:

psig

Salinity: 2800.00 ppm

Filter Cake: inches

Recovery Information

Recovery Table

Length ft	Description	Volume bbbl
25.00	5%Oil/10%Water/85%Mud	0.123
30.00	5%Oil/95%Mud	0.375

Total Length: 55.00 ft Total Volume: 0.498 bbl

Num Fluid Samples: 0

Num Gas Bombs: 0

Serial #:

Laboratory Name:

Laboratory Location:

Recovery Comments:

