



## DRILL STEM TEST REPORT

Prepared For: **Michael Weilert Oil Company**

866 230th Avenue  
Hays, Kansas 67601+9605

ATTN: Roger Moses

**Wann #1**

**7/14S/19W/Ellis**

Start Date: 2012.10.23 @ 11:39:00

End Date: 2012.10.23 @ 20:01:30

Job Ticket #: 16902                      DST #: 1

Superior Testers Enterprises LLC  
PO Box 138 Great Bend KS 67530  
1-800-792-6902

Printed: 2012.10.28 @ 22:41:21



# DRILL STEM TEST REPORT

Michael Weilert Oil Company

**7/14S/19W/Ellis**

866 230th Avenue  
Hays, Kansas 67601+9605

**Wann #1**

Job Ticket: 16902

**DST#: 1**

ATTN: Roger Moses

Test Start: 2012.10.23 @ 11:39:00

## GENERAL INFORMATION:

Formation: **Lansing/Kansas City**

Deviated: No Whipstock: ft (KB)

Time Tool Opened: 13:30:30

Time Test Ended: 20:01:30

Test Type: Conventional Bottom Hole (Initial)

Tester: Ken Swinney

Unit No: 3325 Hays/14

**Interval: 3665.00 ft (KB) To 3718.00 ft (KB) (TVD)**

Reference Elevations: 2217.00 ft (KB)

Total Depth: 3718.00 ft (KB) (TVD)

2212.00 ft (CF)

Hole Diameter: 7.88 inches Hole Condition: Fair

KB to GR/CF: 5.00 ft

**Serial #: 6749 Inside**

Press @ Run Depth: 65.57 psia @ 3713.70 ft (KB)

Capacity: 5000.00 psia

Start Date: 2012.10.23

End Date: 2012.10.23

Last Calib.: 2012.10.23

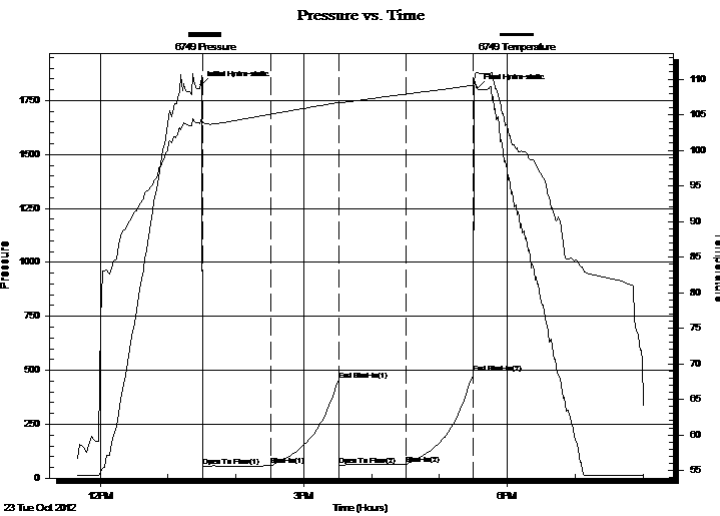
Start Time: 11:40:00

End Time: 20:01:30

Time On Btm: 2012.10.23 @ 13:29:00

Time Off Btm: 2012.10.23 @ 17:33:30

**TEST COMMENT:** 1ST Open 60 Minutes/Weak to Fair blow /Blow built to 10 1/2 inches in bucket of water  
 1ST Shut In 60 Minutes/No blow back  
 2ND Open 60 Minutes/Good blow /Blow built to bottom of bucket in 14 minutes  
 2ND Shut In 60 Minutes/No blow back



## PRESSURE SUMMARY

Time (Min.)	Pressure (psia)	Temp (deg F)	Annotation
0	1820.00	104.37	Initial Hydro-static
2	54.02	103.94	Open To Flow (1)
62	57.85	105.08	Shut-In(1)
122	454.09	106.76	End Shut-In(1)
123	57.90	106.67	Open To Flow (2)
182	65.57	107.92	Shut-In(2)
241	486.34	109.14	End Shut-In(2)
245	1805.53	110.89	Final Hydro-static

## Recovery

Length (ft)	Description	Volume (bbl)
45.00	Oily Mud	0.63
0.00	Oil 25% Mud 75%	0.00
0.00	255 feet of gas in pipe/ Gas 100%	0.00

## Gas Rates

	Choke (inches)	Pressure (psia)	Gas Rate (Mcf/d)



# DRILL STEM TEST REPORT

Michael Weilert Oil Company

**7/14S/19W/Ellis**

866 230th Avenue  
Hays, Kansas 67601+9605

**Wann #1**

Job Ticket: 16902

**DST#: 1**

ATTN: Roger Moses

Test Start: 2012.10.23 @ 11:39:00

## GENERAL INFORMATION:

Formation: **Lansing/Kansas City**

Deviated: No Whipstock: ft (KB)

Time Tool Opened: 13:30:30

Time Test Ended: 20:01:30

Test Type: Conventional Bottom Hole (Initial)

Tester: Ken Swinney

Unit No: 3325 Hays/14

**Interval: 3665.00 ft (KB) To 3718.00 ft (KB) (TVD)**

Reference Elevations: 2217.00 ft (KB)

Total Depth: 3718.00 ft (KB) (TVD)

2212.00 ft (CF)

Hole Diameter: 7.88 inches Hole Condition: Fair

KB to GR/CF: 5.00 ft

**Serial #: 6999 Outside**

Press @ Run Depth: 485.27 psia @ 3714.70 ft (KB)

Capacity: 5000.00 psia

Start Date: 2012.10.23

End Date: 2012.10.23

Last Calib.: 2012.10.23

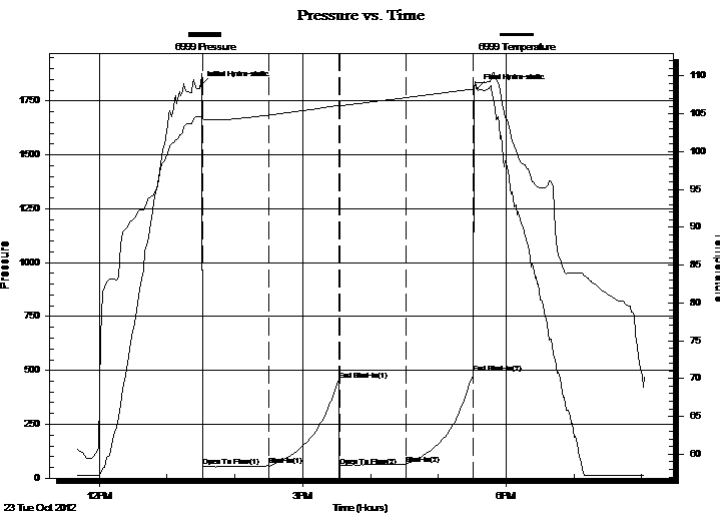
Start Time: 11:41:00

End Time: 20:02:30

Time On Btm: 2012.10.23 @ 13:30:00

Time Off Btm: 2012.10.23 @ 17:34:30

**TEST COMMENT:** 1ST Open 60 Minutes/Weak to Fair blow /Blow built to 10 1/2 inches in bucket of water  
 1ST Shut In 60 Minutes/No blow back  
 2ND Open 60 Minutes/Good blow /Blow built to bottom of bucket in 14 minutes  
 2ND Shut In 60 Minutes/No blow back



## PRESSURE SUMMARY

Time (Min.)	Pressure (psia)	Temp (deg F)	Annotation
0	1820.63	104.66	Initial Hydro-static
2	53.25	104.31	Open To Flow (1)
60	57.63	104.81	Shut-In(1)
122	452.99	106.12	End Shut-In(1)
123	56.29	106.06	Open To Flow (2)
182	64.84	107.14	Shut-In(2)
241	485.27	108.29	End Shut-In(2)
245	1806.17	109.15	Final Hydro-static

## Recovery

Length (ft)	Description	Volume (bbl)
45.00	Oily Mud	0.63
0.00	Oil 25% Mud 75%	0.00
0.00	255 feet of gas in pipe/ Gas 100%	0.00

## Gas Rates

	Choke (inches)	Pressure (psia)	Gas Rate (Mcf/d)



# DRILL STEM TEST REPORT

**TOOL DIAGRAM**

Michael Weilert Oil Company

**7/14S/19W/Ellis**

866 230th Avenue  
Hays, Kansas 67601+9605

**Wann #1**

Job Ticket: 16902

**DST#: 1**

ATTN: Roger Moses

Test Start: 2012.10.23 @ 11:39:00

## Tool Information

Drill Pipe:	Length: 3668.00 ft	Diameter: 3.80 inches	Volume: 51.45 bbl	Tool Weight: 2000.00 lb
Heavy Wt. Pipe:	Length: 0.00 ft	Diameter: 0.00 inches	Volume: 0.00 bbl	Weight set on Packer: 20000.00 lb
Drill Collar:	Length: 0.00 ft	Diameter: 0.00 inches	Volume: 0.00 bbl	Weight to Pull Loose: 40000.00 lb
			<u>Total Volume: 51.45 bbl</u>	Tool Chased 0.00 ft
Drill Pipe Above KB:	30.00 ft			String Weight: Initial 30000.00 lb
Depth to Top Packer:	3665.00 ft			Final 31000.00 lb
Depth to Bottom Packer:	ft			
Interval between Packers:	52.70 ft			
Tool Length:	79.70 ft			
Number of Packers:	2	Diameter: 6.75 inches		

Tool Comments:

Tool Description	Length (ft)	Serial No.	Position	Depth (ft)	Accum. Lengths
------------------	-------------	------------	----------	------------	----------------

Shut In Tool	5.00			3643.00	
Hydraulic Tool	5.00			3648.00	
Jars	5.00			3653.00	
Safety Joint	2.00			3655.00	
Packer	5.00			3660.00	27.00 Bottom Of Top Packer
Packer	5.00			3665.00	
Perforations	5.00			3670.00	
Change Over Sub	0.75			3670.75	
Drill Pipe	31.20			3701.95	
Change Over Sub	0.75			3702.70	
Anchor	10.00			3712.70	
Recorder	1.00	6749	Inside	3713.70	
Recorder	1.00	6999	Outside	3714.70	
Bullnose	3.00			3717.70	52.70 Bottom Packers & Anchor

**Total Tool Length: 79.70**



# DRILL STEM TEST REPORT

## FLUID SUMMARY

Michael Weilert Oil Company

**7/14S/19W/Ellis**

866 230th Avenue  
Hays, Kansas 67601+9605

**Wann #1**

Job Ticket: 16902

**DST#: 1**

ATTN: Roger Moses

Test Start: 2012.10.23 @ 11:39:00

### Mud and Cushion Information

Mud Type: Gel Chem  
Mud Weight: 9.00 lb/gal  
Viscosity: 68.00 sec/qt  
Water Loss: 6.77 in<sup>3</sup>  
Resistivity: ohm.m  
Salinity: 4700.00 ppm  
Filter Cake: 2.00 inches

Cushion Type:  
Cushion Length: ft  
Cushion Volume: bbl  
Gas Cushion Type:  
Gas Cushion Pressure: psia

Oil API: deg API  
Water Salinity: ppm

### Recovery Information

Recovery Table

Length ft	Description	Volume bbl
45.00	Oily Mud	0.631
0.00	Oil 25% Mud 75%	0.000
0.00	255 feet of gas in pipe/ Gas 100%	0.000

Total Length: 45.00 ft      Total Volume: 0.631 bbl

Num Fluid Samples: 0

Num Gas Bombs: 0

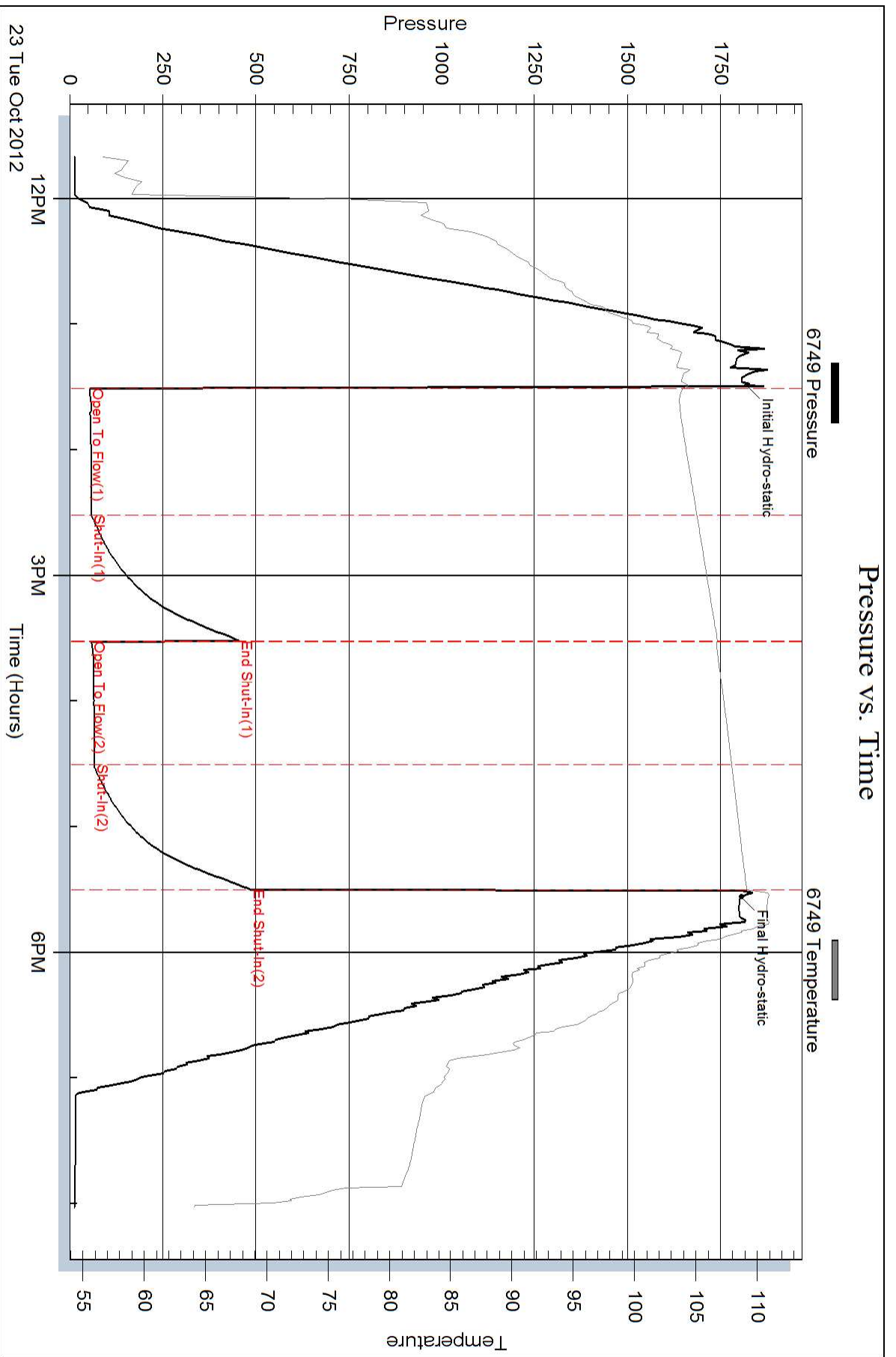
Serial #:

Laboratory Name:

Laboratory Location:

Recovery Comments:

### Pressure vs. Time



### Pressure vs. Time

