



**TRILOBITE
TESTING, INC.**

DRILL STEM TEST REPORT

Prepared For: **Jason Oil Co. LLC**

PO Box 701
Russell KS 67665+0701

ATTN: Jeff Lawler

Maier #1

4-8s-24w Graham,KS

Start Date: 2012.11.09 @ 18:51:05

End Date: 2012.11.10 @ 01:22:09

Job Ticket #: 49372 DST #: 1

Trilobite Testing, Inc

PO Box 362 Hays, KS 67601

ph: 785-625-4778 fax: 785-625-5620

Printed: 2012.11.20 @ 11:27:16

Jason Oil Co. LLC 4-8s-24w Graham,KS Maier #1 DST # 1 Oread-Plattsmouth 2012.11.09

DRILL STEM TEST REPORT



Jason Oil Co. LLC
 PO Box 701
 Russell KS 67665+0701
 ATTN: Jeff Lawler

Maier #1
 4-8s-24w Graham, KS
 Job Ticket: 49372
 DST#: 1
 Test Start: 2012.11.09 @ 18:51:05

GENERAL INFORMATION:

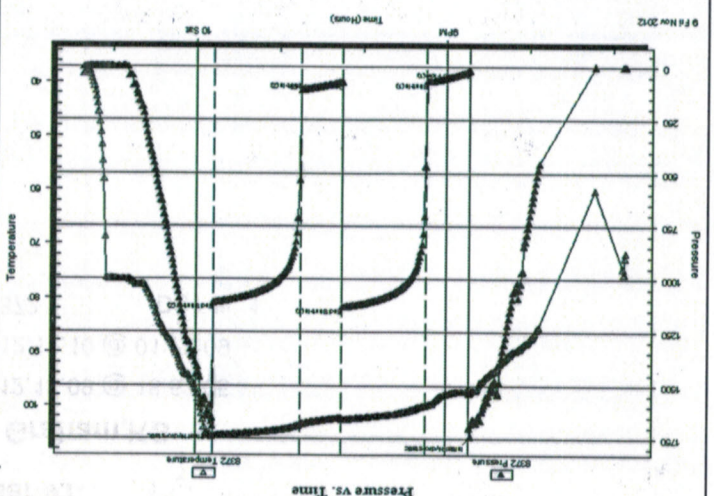
Formation: Oread-Plattsmouth
 Deviated: No
 Whipstock: No
 Time Tool Opened: 20:43:40
 Time Test Ended: 01:22:09
 Interval: 3527.00 ft (KB) To 3592.00 ft (KB) (TVD)
 Total Depth: 3592.00 ft (KB) (TVD)
 Hole Diameter: 7.88 inches
 Condition: Fair

Serial #: 8372
 Outside
 Press@RunDepth: 108.30 psig @ 3534.00 ft (KB)
 Start Date: 2012.11.09
 End Date: 2012.11.10
 Start Time: 18:51:05
 End Time: 01:22:10
 Capacity: 8000.00 psig
 Last Calib.: 2012.11.10
 Time On Btm: 2012.11.09 @ 20:42:20
 Time Off Btm: 2012.11.09 @ 23:48:20

TEST COMMENT:
 IF:(30min) 2" blow in 3 min. 6" in 14 min. built to 10"
 ISI:(60min) No Return
 FF:(30min) 2" blow in 5 min. 6" in 18 min. built to 8"
 FSI:(60min) No Return

PRESSURE SUMMARY

Time (Min.)	Pressure (psig)	Temp (deg F)	Annotation
0	1742.61	97.46	Initial Hydro-static
2	16.30	96.66	Open To Flow (1)
32	68.73	99.83	Shut-in(1)
93	1132.18	102.55	End Shut-in(1)
93	70.67	102.12	Open To Flow (2)
123	108.30	103.40	Shut-in(2)
186	1110.14	105.54	End Shut-in(2)
186	1693.06	105.71	Final Hydro-static



Recovery

Length (ft)	Description	Volume (bb)
200.00	MMW m=30% w=70%	2.54

Gas Rates

Choke (inches)	Pressure (psig)	Gas Rate (Mcf/d)



RILOBITE
TESTING, INC.

Jason Oil Co. LLC
PO Box 701
Russell KS 67665+0701

Mater #1
4-8s-24w Graham, KS
Job Ticket: 49372
DST#: 1
ATTN: Jeff Lawler
Test Start: 2012.11.09 @ 18:51:05

DRILL STEM TEST REPORT
TOOL DIAGRAM

Tool Information

Drill Pipe:	Length: 3483.00 ft	Diameter: 3.80 inches	Volume: 48.86 bbl	Tool Weight: 2500.00 lb
Heavy Mt. Pipe:	Length: 0.00 ft	Diameter: 2.70 inches	Volume: 0.00 bbl	Weight set on Packer: 2400.00 lb
Drill Collar:	Length: 29.21 ft	Diameter: 2.25 inches	Volume: 0.14 bbl	Weight to Pull Loose: 5800.00 lb
Total Volume: 49.00 bbl				
Drill Pipe Above KB:	5.21 ft	Tool Chased 0.00 ft		
Depth to Top Packer:	3527.00 ft	String Weight: Initial 38000.00 lb		
Depth to Bottom Packer:	ft	Final 40000.00 lb		
Interval between Packers:	65.00 ft			
Tool Length:	85.00 ft			
Number of Packers:	2	Diameter:	6.75 inches	
Tool Comments:				

Tool Description	Length (ft)	Serial No.	Position	Depth (ft) Accum. Lengths
Change Over Sub	1.00			3508.00
Shut In Tool	5.00			3513.00
Hydraulic tool	5.00			3518.00
Packer	5.00			3523.00
Packer	4.00			3527.00
Stub	1.00			3528.00
Perforations	5.00			3533.00
Change Over Sub	1.00			3534.00
Recorder	0.00	8017	Inside	3534.00
Recorder	0.00	8372	Outside	3534.00
Drill Pipe	32.00			3566.00
Change Over Sub	1.00			3567.00
Perforations	22.00			3589.00
Bullnose	3.00			3592.00
Total Tool Length: 85.00				

Change Over Sub	1.00			3508.00
Shut In Tool	5.00			3513.00
Hydraulic tool	5.00			3518.00
Packer	5.00			3523.00
Packer	4.00			3527.00
Stub	1.00			3528.00
Perforations	5.00			3533.00
Change Over Sub	1.00			3534.00
Recorder	0.00	8017	Inside	3534.00
Recorder	0.00	8372	Outside	3534.00
Drill Pipe	32.00			3566.00
Change Over Sub	1.00			3567.00
Perforations	22.00			3589.00
Bullnose	3.00			3592.00
Total Tool Length: 85.00				

Change Over Sub	1.00			3508.00
Shut In Tool	5.00			3513.00
Hydraulic tool	5.00			3518.00
Packer	5.00			3523.00
Packer	4.00			3527.00
Stub	1.00			3528.00
Perforations	5.00			3533.00
Change Over Sub	1.00			3534.00
Recorder	0.00	8017	Inside	3534.00
Recorder	0.00	8372	Outside	3534.00
Drill Pipe	32.00			3566.00
Change Over Sub	1.00			3567.00
Perforations	22.00			3589.00
Bullnose	3.00			3592.00
Total Tool Length: 85.00				



**TRILOBITE
TESTING, INC.**

DRILL STEM TEST REPORT

FLUID SUMMARY

Jason Oil Co. LLC
PO Box 701
Russell KS 67665+0701
ATTN: Jeff Lawler

4-8s-24w Graham, KS
Maier #1
Job Ticket: 49372 **DST#: 1**
Test Start: 2012.11.09 @ 18:51:05

Mud and Cushion Information

Mud Type: Gel Chem	Cushion Type:	Oil API:	deg API
Mud Weight: 9.00 lb/gal	Cushion Length: ft	Water Salinity:	72000 ppm
Viscosity: 52.00 sec/qt	Cushion Volume: bbl		
Water Loss: 7.55 in ³	Gas Cushion Type:		
Resistivity: ohm.m	Gas Cushion Pressure: psig		
Salinity: 500.00 ppm			
Filter Cake: inches			

Recovery Information

Recovery Table

Length ft	Description	Volume bbl
200.00	MW m=30% w =70%	2.539

Total Length: 200.00 ft Total Volume: 2.539 bbl
 Num Fluid Samples: 0 Num Gas Bombs: 0 Serial #:
 Laboratory Name: Laboratory Location:
 Recovery Comments:

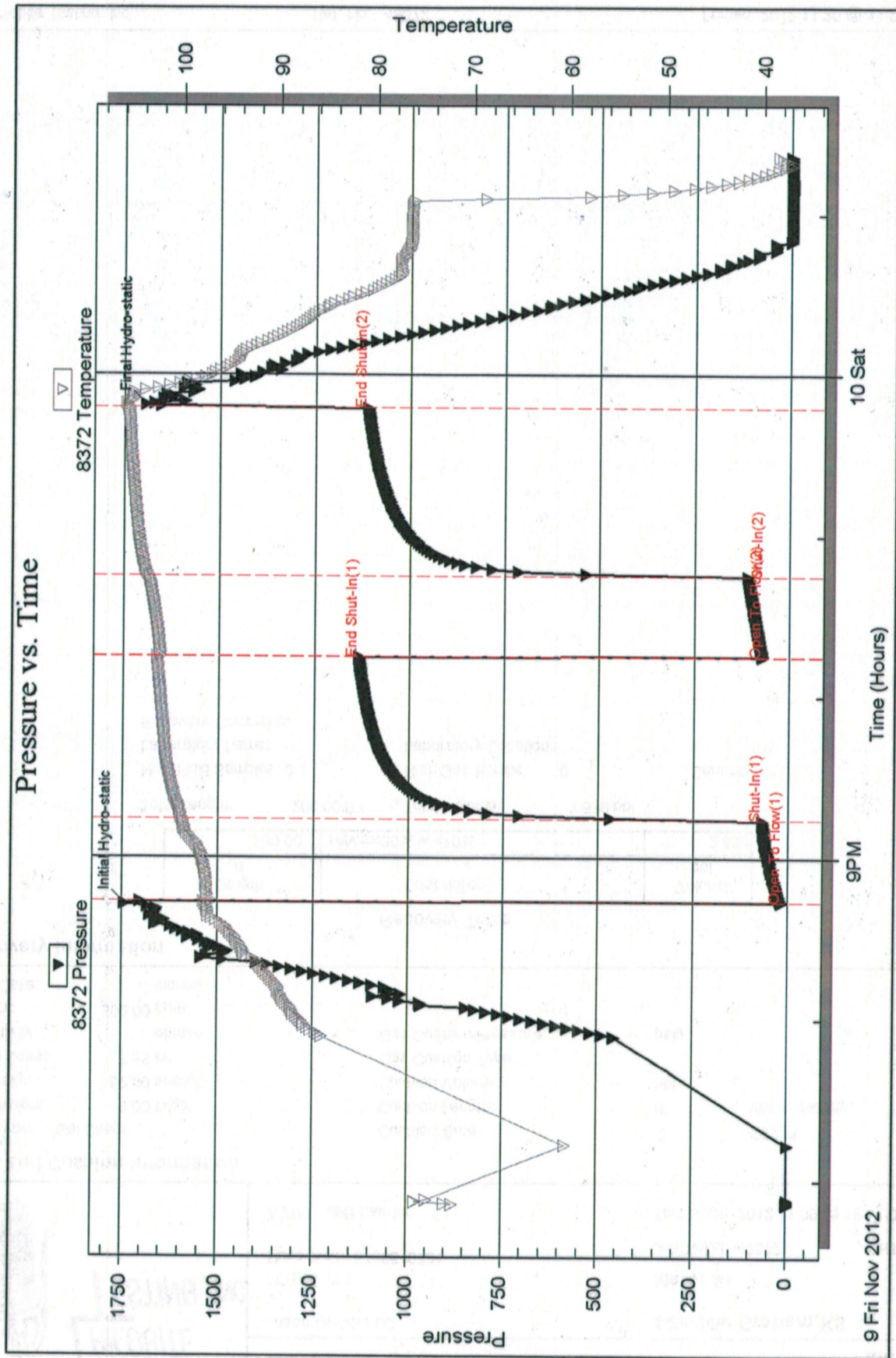
Serial #: 8372

Outside Jason Oil Co. LLC

Maier #1

DST Test Number: 1

Pressure vs. Time



Printed: 2012.11.20 @ 11:27:20

Ref. No: 49372

Tribolite Testing, Inc

Serial #: 8017

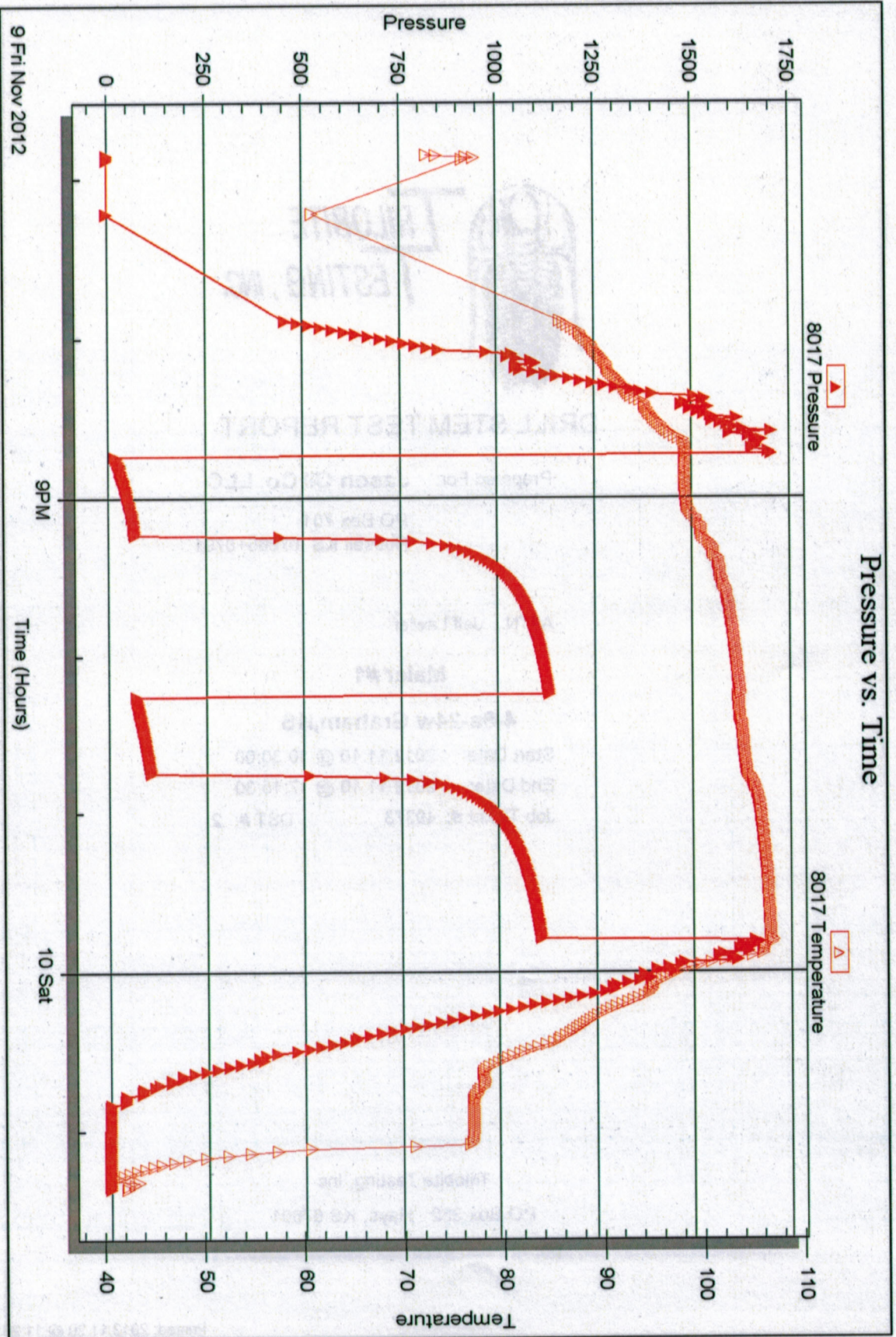
Inside

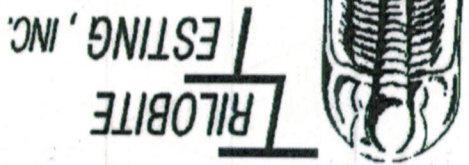
Jason Oil Co. LLC

Well #1

DST Test Number: 1

Pressure vs. Time





DRILL STEM TEST REPORT

Prepared For: **Jason Oil Co. LLC**

PO Box 701
Russell KS 67665+0701

ATTN: Jeff Lawler

Maier #1

4-8s-24w Graham,KS

Start Date: 2012.11.10 @ 10:30:00

End Date: 2012.11.10 @ 17:15:30

Job Ticket #: 49373
DST #: 2

TriLOBITE TESTING, Inc
PO Box 362 Hays, KS 67601

ph: 785-625-4778 fax: 785-625-5620



**TRILOBITE
TESTING, INC.**

DRILL STEM TEST REPORT

Jason Oil Co. LLC
PO Box 701
Russell KS 67665+0701
ATTN: Jeff Lawler

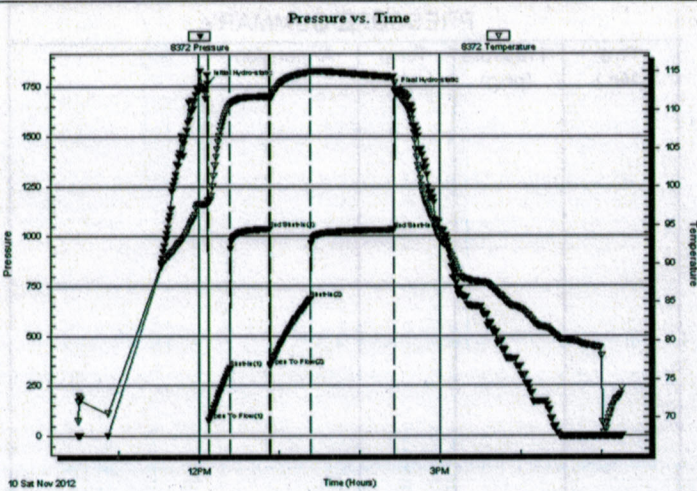
4-8s-24w Graham, KS
Maier #1
Job Ticket: 49373 **DST#: 2**
Test Start: 2012.11.10 @ 10:30:00

GENERAL INFORMATION:

Formation: **LKC"C-D"**
Deviated: No Whipstock: ft (KB)
Time Tool Opened: 12:07:40
Time Test Ended: 17:15:30
Interval: **3636.00 ft (KB) To 3678.00 ft (KB) (TVD)**
Total Depth: 3678.00 ft (KB) (TVD)
Hole Diameter: 7.88 inches Hole Condition: Fair
Test Type: Conventional Bottom Hole (Reset)
Tester: Andy Carreira
Unit No: 39
Reference Elevations: 2360.00 ft (KB)
2352.00 ft (CF)
KB to GR/CF: 8.00 ft

Serial #: 8372 Outside
Press@RunDepth: 682.33 psig @ 3641.00 ft (KB) Capacity: 8000.00 psig
Start Date: 2012.11.10 End Date: 2012.11.10 Last Calib.: 2012.11.10
Start Time: 10:30:05 End Time: 17:15:29 Time On Btm: 2012.11.10 @ 12:06:50
Time Off Btm: 2012.11.10 @ 14:26:20

TEST COMMENT: IF:(15min) BOB 2 min.
ISI:(30min) No Return
FF:(30min) BOB 3 min.
FSI:(60min) Return surface blow



PRESSURE SUMMARY

Time (Min.)	Pressure (psig)	Temp (deg F)	Annotation
0	1767.34	98.15	Initial Hydro-static
1	77.16	97.93	Open To Flow (1)
17	337.56	110.66	Shut-In(1)
46	1036.26	111.77	End Shut-In(1)
47	346.20	111.54	Open To Flow (2)
77	682.33	114.95	Shut-In(2)
139	1032.19	114.31	End Shut-In(2)
140	1726.29	113.50	Final Hydro-static

Recovery

Length (ft)	Description	Volume (bbl)
1005.00	MW m=tr w=100%	13.83
380.00	GOSMW g=5% o=3% m=12% w=80%	5.33
40.00	GOCWM g=5% o=10% w=40% m=45%	0.56
25.00	GO g=10% o=90%	0.35

* Recovery from multiple tests

Gas Rates

	Choke (inches)	Pressure (psig)	Gas Rate (Mcf/d)

DRILL STEM TEST REPORT



Jason Oil Co. LLC
 PO Box 701
 Russell KS 67665+0701
 ATTN: Jeff Lawler

Maier #1
 4-8s-24w Graham, KS
 Job Ticket: 49373
 DST#: 2
 Test Start: 2012.11.10 @ 10:30:00

GENERAL INFORMATION:

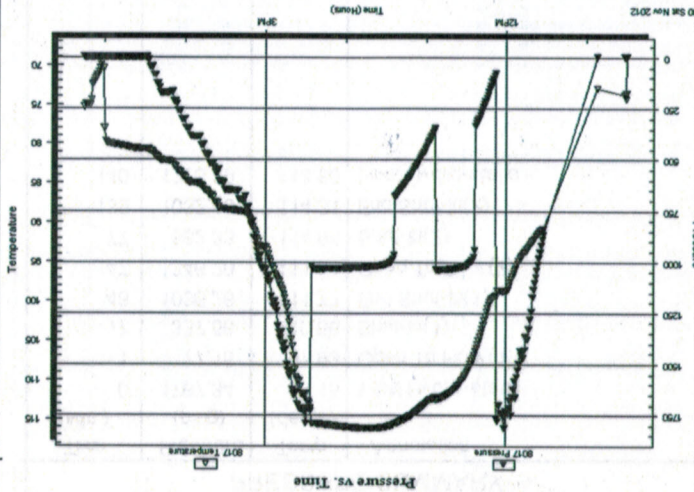
Formation: LKC"C-D"
 Deviated: No Whipstock: ft (KB)
 Time Tool Opened: 12:07:40
 Time Test Ended: 17:15:30
 Interval: 3636.00 ft (KB) To 3678.00 ft (KB) (TVD)
 Total Depth: 3678.00 ft (KB) (TVD)
 Hole Diameter: 7.88 inchesHole Condition: Fair
 Reference Elevations: 2360.00 ft (KB)
 2352.00 ft (CF)
 8.00 ft
 KB to GR/CF:
 Test Type: Conventional Bottom Hole (Reset)
 Tester: Andy Carreira
 Unit No: 39

Serial #: 8017 Inside

Press@RunDepth: psig @ 3641.00 ft (KB)
 Start Date: 2012.11.10
 End Date: 2012.11.10
 Start Time: 10:30:05
 End Time: 17:15:29

TEST COMMENT:
 IF:(15min) BOB 2 min.
 IS:(30min) No Return
 FF:(30min) BOB 3 min.
 FS:(60min) Return surface blow

PRESSURE SUMMARY



Recovery

Length (ft)	Description	Volume (bbl)
1005.00	MMW m=tr w=100%	13.83
380.00	GOSMW g=5% o=3% m=12% w=80%	5.33
40.00	GOCMM g=5% o=10% w=40% m=45%	0.56
25.00	GO g=10% o=90%	0.35

Gas Rates

Choke (inches)	Pressure (psig)	Gas Rate (Mcf/d)



**TRILOBITE
TESTING, INC.**

DRILL STEM TEST REPORT

TOOL DIAGRAM

Jason Oil Co. LLC

4-8s-24w Graham, KS

PO Box 701
Russell KS 67665+0701

Maier #1

Job Ticket: 49373

DST#: 2

ATTN: Jeff Lawler

Test Start: 2012.11.10 @ 10:30:00

Tool Information

Drill Pipe:	Length: 3607.00 ft	Diameter: 3.80 inches	Volume: 50.60 bbl	Tool Weight: 2500.00 lb
Heavy Wt. Pipe:	Length: 0.00 ft	Diameter: 2.70 inches	Volume: 0.00 bbl	Weight set on Packer: 24000.00 lb
Drill Collar:	Length: 29.21 ft	Diameter: 2.25 inches	Volume: 0.14 bbl	Weight to Pull Loose: 52000.00 lb
		<u>Total Volume:</u>	<u>50.74 bbl</u>	Tool Chased 0.00 ft
Drill Pipe Above KB:	20.21 ft			String Weight: Initial 40000.00 lb
Depth to Top Packer:	3636.00 ft			Final 48000.00 lb
Depth to Bottom Packer:	ft			
Interval between Packers:	42.00 ft			
Tool Length:	62.00 ft			
Number of Packers:	2	Diameter: 6.75 inches		
Tool Comments:				

Tool Description	Length (ft)	Serial No.	Position	Depth (ft)	Accum. Lengths
Change Over Sub	1.00			3617.00	
Shut In Tool	5.00			3622.00	
Hydraulic tool	5.00			3627.00	
Packer	5.00			3632.00	20.00 Bottom Of Top Packer
Packer	4.00			3636.00	
Stubb	1.00			3637.00	
Perforations	3.00			3640.00	
Change Over Sub	1.00			3641.00	
Recorder	0.00	8017	Inside	3641.00	
Recorder	0.00	8372	Outside	3641.00	
Drill Pipe	31.00			3672.00	
Change Over Sub	1.00			3673.00	
Perforations	2.00			3675.00	
Bullnose	3.00			3678.00	42.00 Bottom Packers & Anchor

Total Tool Length: 62.00



TRILOBITE TESTING, INC.

Jason Oil Co. LLC
 PO Box 701
 Russell KS 67665+0701
 ATTN: Jeff Lawler

Maier #1
 4-8s-24w Graham, KS
 Job Ticket: 49373
 DST#: 2
 Test Start: 2012.11.10 @ 10:30:00

FLUID SUMMARY

Mud and Cushion Information

Mud Type: Gel Chem
 Mud Weight: 9.00 lb/gal
 Viscosity: 52.00 sec/qt
 Water Loss: 7.55 in³
 Resistivity: ohm.m
 Salinity: 1000.00 ppm
 Filter Cake: inches
 Cushion Type: Oil API
 Cushion Length: ft
 Cushion Volume: bbl
 Gas Cushion Pressure: psig
 Gas Cushion Type:
 Gas Cushion Type:
 Oil API: deg API
 Water Salinity: 60000 ppm

Recovery Information

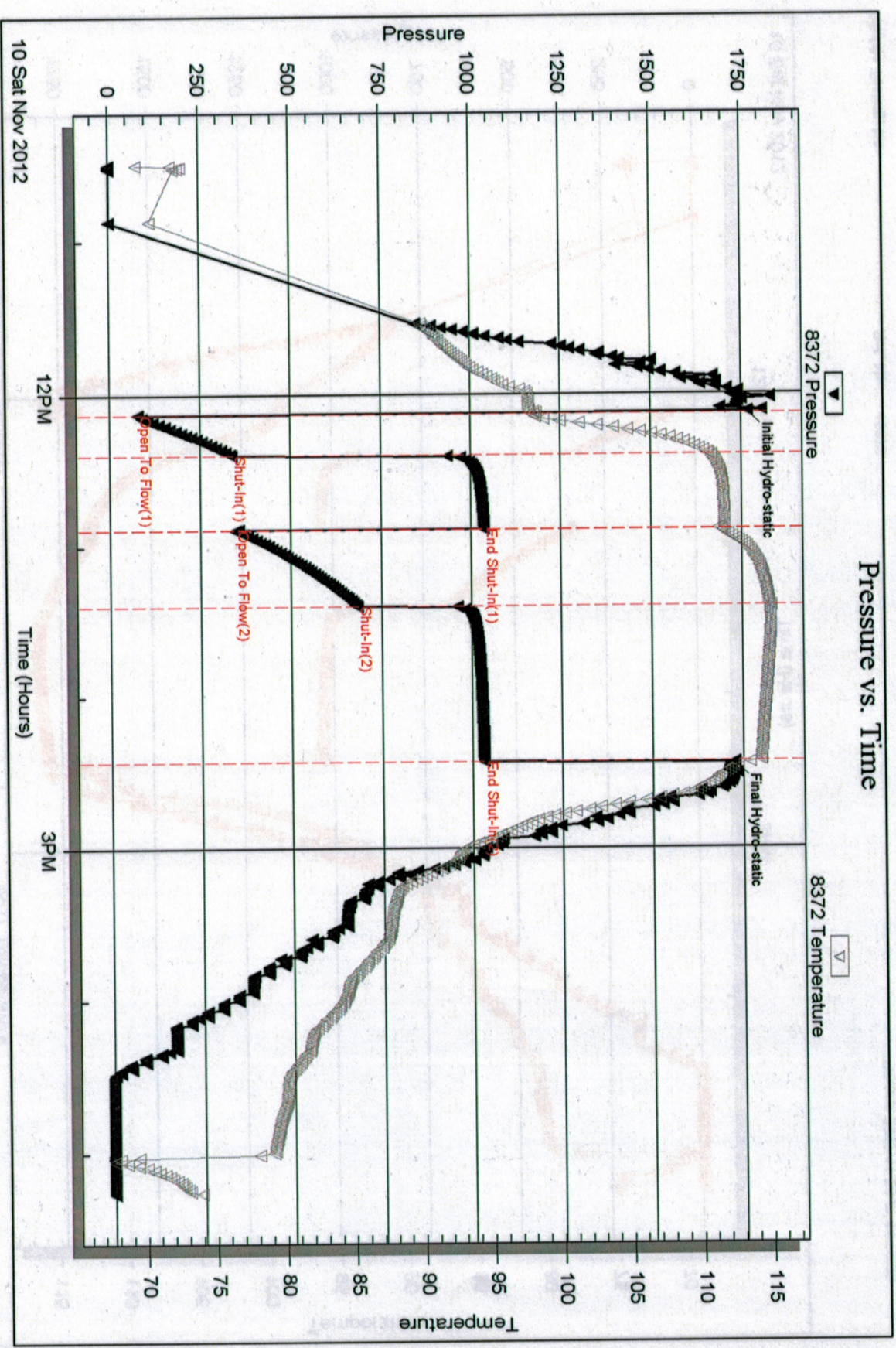
Recovery Table

Length ft	Description	Volume bbl
1005.00	MV m=tr w =100%	13.831
380.00	GOSMV g=5% o=3% m=12% w=80%	5.330
40.00	GOCMM g=5% o=10% w=40% m=45%	0.561
25.00	GO g=10% o=90%	0.351

Total Length: 1450.00 ft
 Total Volume: 20.073 bbl

Num Fluid Samples: 0
 Num Gas Bombs: 0
 Serial #:

Laboratory Name:
 Recovery Comments:



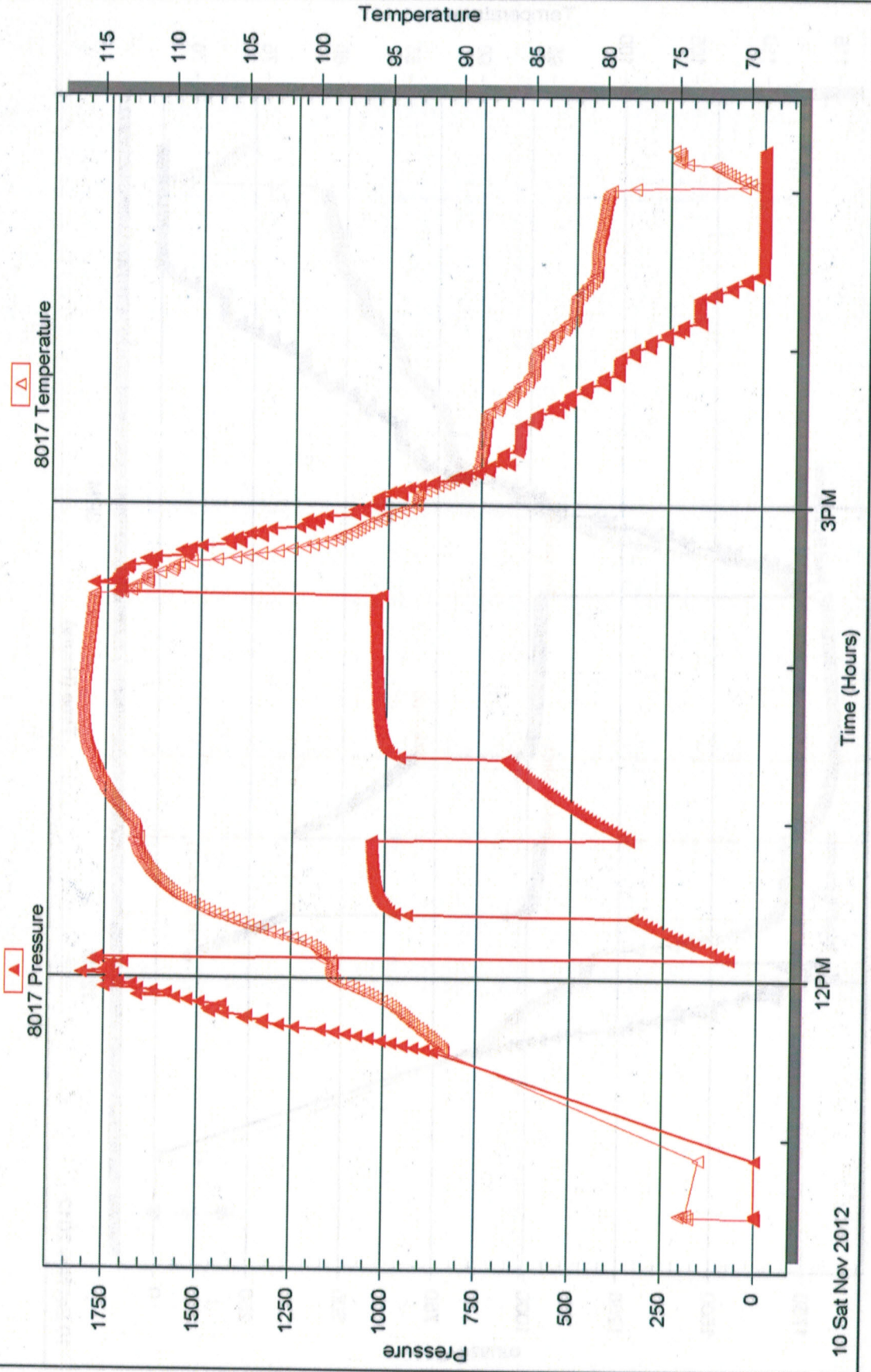
Serial #: 8017

Inside Jason Oil Co. LLC

Maier #1

DST Test Number: 2

Pressure vs. Time





TRILOBITE TESTING, INC.

DRILL STEM TEST REPORT

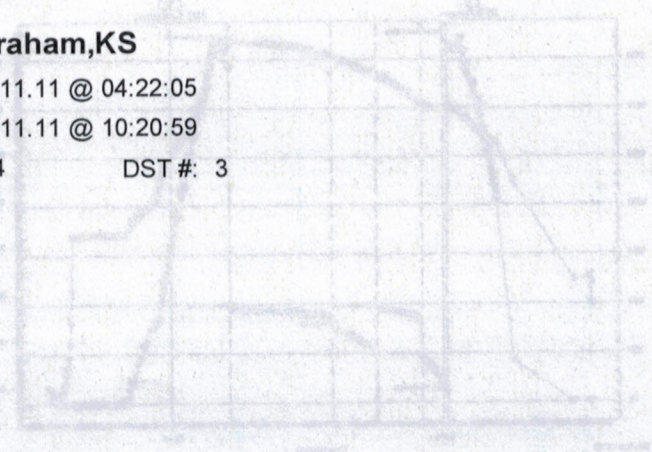
Prepared For: **Jason Oil Co. LLC**
PO Box 701
Russell KS 67665+0701

ATTN: Jeff Lawler

Maier #1

4-8s-24w Graham,KS

Start Date: 2012.11.11 @ 04:22:05
End Date: 2012.11.11 @ 10:20:59
Job Ticket #: 49374 DST #: 3



Trilobite Testing, Inc.
PO Box 362 Hays, KS 67601
ph: 785-625-4778 fax: 785-625-5620

Jason Oil Co. LLC 4-8s-24w Graham,KS Maier #1 DST # 3 LKC"H-I" 2012.11.11

DRILL STEM TEST REPORT



Jason Oil Co. LLC
 PO Box 701
 Russell KS 67665+0701
 ATTN: Jeff Lawler

Maier #1
 4-8s-24w Graham, KS
 Job Ticket: 49374
 DST#: 3
 Test Start: 2012.11.11 @ 04:22:05

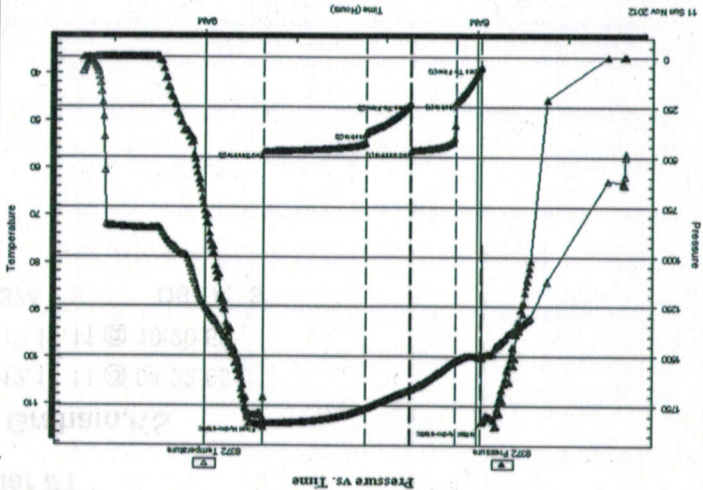
GENERAL INFORMATION:

Formation: LKC "H-I"
 Deviated: No
 Whipstock: No
 Time Tool Opened: 05:57:30
 Time Test Ended: 10:20:59
 Interval: 3724.00 ft (KB) To 3770.00 ft (KB) (TVD)
 Total Depth: 3770.00 ft (KB) (TVD)
 Hole Diameter: 7.88 inches
 Condition: Fair
 Reference Elevations: 2360.00 ft (KB)
 2352.00 ft (CF)
 8.00 ft
 Test Type: Conventional Bottom Hole (Reset)
 Tester: Andy Carreira
 Unit No: 39

Serial #: 8372
 Outside
 Press@RunDepth: 376.75 psig @ 3731.00 ft (KB)
 Start Date: 2012.11.11
 End Date: 2012.11.11
 Start Time: 04:22:05
 End Time: 10:20:59
 Capacity: 8000.00 psig
 Last Callb.: 2012.11.11
 Time On Btm: 2012.11.11 @ 05:56:30
 Time Off Btm: 2012.11.11 @ 08:21:30
TEST COMMENT: IF:(15min) BOB 2 min.
 IS:(30min) No Return
 FF:(30min) BOB 4 min.
 FS:(60min) No Return

PRESSURE SUMMARY

Annotation	Temp (deg F)	Pressure (psig)	Time (Min.)
Initial Hydro-static	99.87	1830.47	0
Open To Flow (1)	99.08	49.06	1
Shut-in(1)	100.70	227.85	18
End Shut-in(1)	106.87	469.18	48
Open To Flow (2)	106.76	233.72	48
Shut-in(2)	110.80	376.75	78
End Shut-in(2)	114.05	472.32	145
Final Hydro-static	114.46	1811.44	145



Recovery

Length (ft)	Description	Volume (bbl)
785.00	MMV m=1r w=100%	10.75
1.00	CO o=100%	0.01

* Recovery from multiple tests

Gas Rates

Gas Rate (Mcfd)	Pressure (psig)	Choke (Inches)



Jason Oil Co. LLC
 PO Box 701
 Russell KS 67665+0701
 ATTN: Jeff Lawler

4-8s-24w Graham, KS
 Maier #1
 Job Ticket: 49374
 DST#: 3
 Test Start: 2012.11.11 @ 04:22:05

DRILL STEM TEST REPORT

TOOL DIAGRAM

Tool Information

Drill Pipe:	Length: 3705.00 ft	Diameter: 3.80 inches	Volume: 51.97 bbl	Tool Weight: 2500.00 lb
Heavy Wt. Pipe:	Length: 0.00 ft	Diameter: 2.70 inches	Volume: 0.00 bbl	Weight set on Packer: 24000.00 lb
Drill Collar:	Length: 29.21 ft	Diameter: 2.25 inches	Volume: 0.14 bbl	Weight to Pull Loose: 54000.00 lb
Drill Pipe Above KB:	30.21 ft	Total Volume:	52.11 bbl	Tool Chased: 0.00 ft
Depth to Top Packer:	3724.00 ft	String Weight: Initial	40000.00 lb	Final
Depth to Bottom Packer:	46.00 ft	Interval between Packers:	46.00 ft	44000.00 lb
Tool Length:	66.00 ft	Number of Packers:	2	Diameter: 6.75 inches
Tool Comments:				

Tool Description

Tool Description	Length (ft)	Serial No.	Position	Depth (ft)	Accum. Lengths
Change Over Sub	1.00			3705.00	
Shut In Tool	5.00			3710.00	
Hydraulic tool	5.00			3715.00	
Packer	5.00			3720.00	
Packer	4.00			3724.00	
Stub	1.00			3725.00	
Perforations	5.00			3730.00	
Change Over Sub	1.00			3731.00	
Recorder	0.00	8017	Inside	3731.00	
Recorder	0.00	8372	Outside	3731.00	
Drill Pipe	31.00			3762.00	
Change Over Sub	1.00			3763.00	
Perforations	4.00			3767.00	
Bullnose	3.00			3770.00	
Total Tool Length: 66.00					
Bottom Packers & Anchor	46.00				
Bottom Of Top Packer	20.00				



**TRILOBITE
TESTING, INC.**

DRILL STEM TEST REPORT

FLUID SUMMARY

Jason Oil Co. LLC

4-8s-24w Graham, KS

PO Box 701
Russell KS 67665+0701

Maier #1

Job Ticket: 49374

DST#: 3

ATTN: Jeff Lawler

Test Start: 2012.11.11 @ 04:22:05

Mud and Cushion Information

Mud Type: Gel Chem

Cushion Type:

Oil API:

deg API

Mud Weight: 9.00 lb/gal

Cushion Length:

ft

Water Salinity:

43000 ppm

Viscosity: 53.00 sec/qt

Cushion Volume:

bbbl

Water Loss: 7.95 in³

Gas Cushion Type:

Resistivity: ohm.m

Gas Cushion Pressure:

psig

Salinity: 1000.00 ppm

Filter Cake: inches

Recovery Information

Recovery Table

Length ft	Description	Volume bbbl
785.00	MW m=tr w =100%	10.745
1.00	CO o=100%	0.014

Total Length: 786.00 ft

Total Volume: 10.759 bbl

Num Fluid Samples: 0

Num Gas Bombs: 0

Serial #:

Laboratory Name:

Laboratory Location:

Recovery Comments:

Serial #: 8372

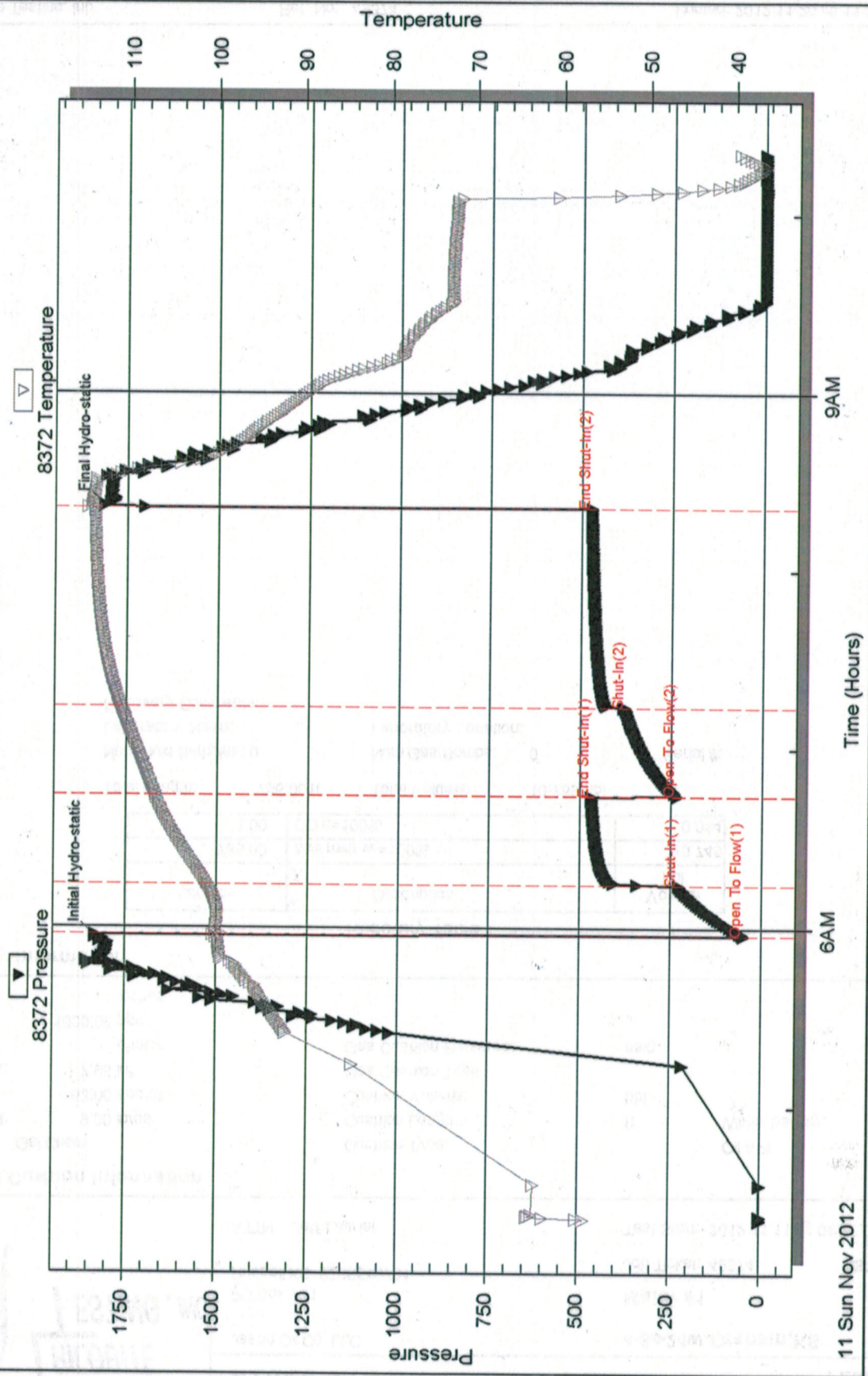
Outside

Jason Oil Co. LLC

Maier #1

DST Test Number: 3

Pressure vs. Time



Trilobite Testing, Inc

Ref. No: 49374

Printed: 2012.11.20 @ 11:25:06

Serial #: 8017

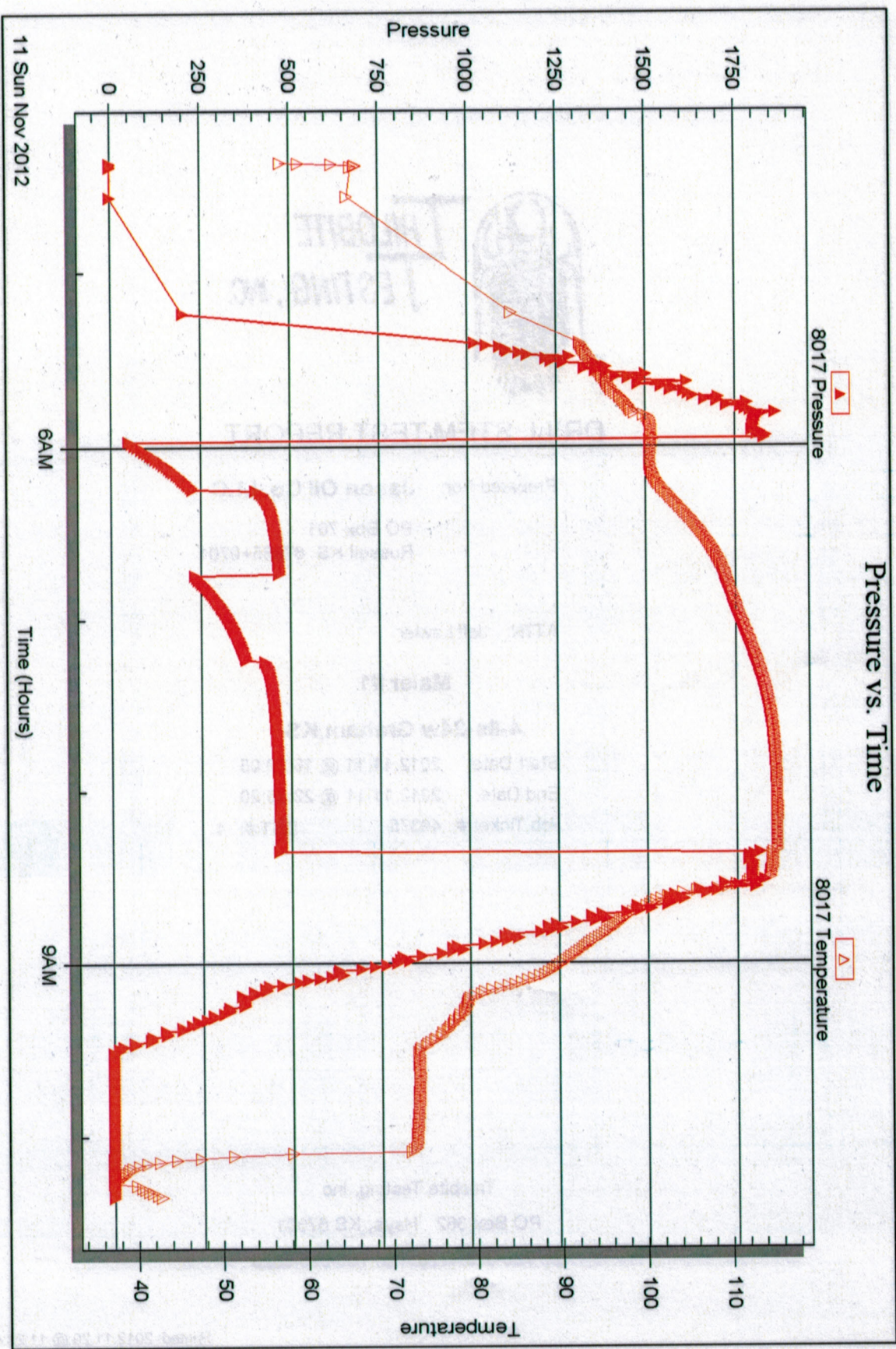
Inside

Jason Oil Co. LLC

Meier #1

DST Test Number: 3

Pressure vs. Time



Triobite Testing, Inc

Ref. No: 49374

Printed: 2012.11.20 @ 11:25:07

Jason Oil Co. LLC 4-8s-24w Graham,KS Maier #1 DST # 4 LKC-J-K 2012.11.11

Printed: 2012.11.20 @ 11:23:44

TRILOBITE TESTING, INC.



DRILL STEM TEST REPORT

Prepared For: **Jason Oil Co. LLC**

PO Box 701
Russell KS 67665+0701

ATTN: Jeff Lawler

Maier #1

4-8s-24w Graham,KS

Start Date: 2012.11.11 @ 18:20:05
End Date: 2012.11.11 @ 22:35:20
Job Ticket #: 49375
DST #: 4

Trilobite Testing, Inc
PO Box 362 Hays, KS 67601
ph: 785-625-4778 fax: 785-625-5620



**TRILOBITE
TESTING, INC.**

DRILL STEM TEST REPORT

Jason Oil Co. LLC
PO Box 701
Russell KS 67665+0701
ATTN: Jeff Lawler

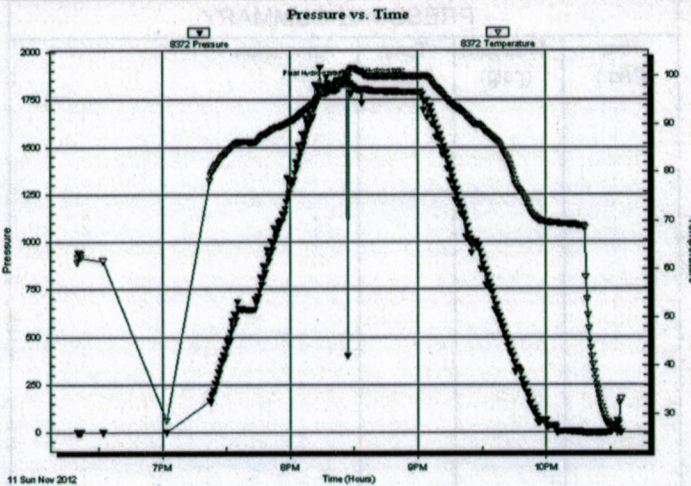
4-8s-24w Graham,KS
Maier #1
Job Ticket: 49375 **DST#: 4**
Test Start: 2012.11.11 @ 18:20:05

GENERAL INFORMATION:

Formation: **LKC"J-K"**
Deviated: No Whipstock: ft (KB)
Time Tool Opened:
Time Test Ended: 22:35:20
Interval: **3769.00 ft (KB) To 3810.00 ft (KB) (TVD)**
Total Depth: 3810.00 ft (KB) (TVD)
Hole Diameter: 7.88 inches Hole Condition: Fair
Test Type: Conventional Bottom Hole (Reset)
Tester: Andy Carreira
Unit No: 39
Reference Elevations: 2360.00 ft (KB)
2352.00 ft (CF)
KB to GR/CF: 8.00 ft

Serial #: 8372 **Outside**
Press@RunDepth: psig @ 3774.00 ft (KB) Capacity: 8000.00 psig
Start Date: 2012.11.11 End Date: 2012.11.11 Last Calib.: 2012.11.11
Start Time: 18:20:05 End Time: 22:35:20 Time On Btm: 2012.11.11 @ 20:23:20
Time Off Btm: 2012.11.11 @ 20:27:20

TEST COMMENT: Misrun- Packer Failure



PRESSURE SUMMARY

Time (Min.)	Pressure (psig)	Temp (deg F)	Annotation
0	1845.56	97.26	Initial Hydro-static
4	1832.18	99.47	Final Hydro-static

Recovery

Length (ft)	Description	Volume (bbl)
100.00	Drilling Mud	1.14

* Recovery from multiple tests

Gas Rates

Choke (inches)	Pressure (psig)	Gas Rate (Mcf/d)

DRILL STEM TEST REPORT



Jason Oil Co. LLC
 PO Box 701
 Russell KS 67665+0701
 ATTN: Jeff Lawler

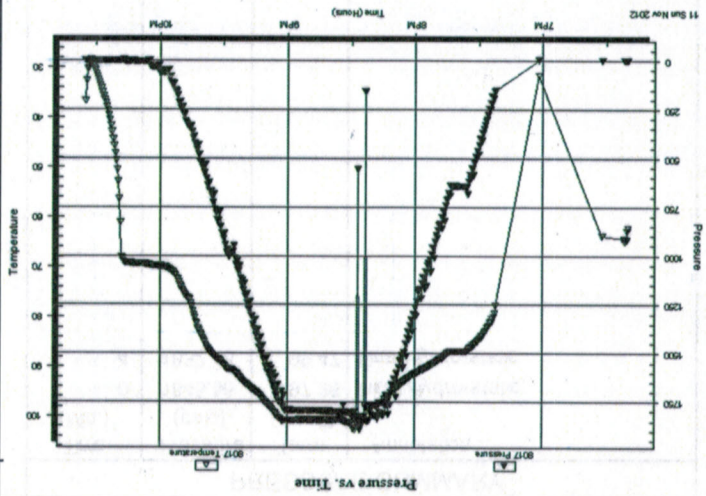
4-8s-24w Graham, KS
 Mater #1
 Job Ticket: 49375
 DST#: 4
 Test Start: 2012.11.11 @ 18:20:05

GENERAL INFORMATION:

Formation: LKC"J-K"
 Deviated: No Whipstock: ft (KB)
 Time Tool Opened: 22:35:20
 Interval: 3769.00 ft (KB) To 3810.00 ft (KB) (TVD)
 Total Depth: 3810.00 ft (KB) (TVD)
 Hole Diameter: 7.88 inchesHole Condition: Fair
 Serial #: 8017
 Inside
 Press@RunDepth: psig @ 3774.00 ft (KB)
 Start Date: 2012.11.11
 End Date: 2012.11.11
 Start Time: 18:20:05
 End Time: 22:35:20
 Capacity: 8000.00 psig
 Last Callb.: 2012.11.11
 Time On Btm: 22:35:20
 Time Off Btm: 2012.11.11
 Test Type: Conventional Bottom Hole (Reset)
 Tester: Andy Carreira
 Unit No: 39
 Reference Elevations: 2360.00 ft (KB)
 2352.00 ft (CF)
 8.00 ft
 KB to GR/CF:

TEST COMMENT: Misrun- Packer Failure

PRESSURE SUMMARY



Length (ft)	Description	Volume (bbl)
100.00	Drilling Mud	1.14
* Recovery from multiple tests		

Gas Rates

Choke (inches)	Pressure (psig)	Gas Rate (Mc/d)



**TRILOBITE
TESTING, INC.**

DRILL STEM TEST REPORT

TOOL DIAGRAM

Jason Oil Co. LLC

4-8s-24w Graham,KS

PO Box 701
Russell KS 67665+0701

Maier #1

Job Ticket: 49375

DST#: 4

ATTN: Jeff Lawler

Test Start: 2012.11.11 @ 18:20:05

Tool Information

Drill Pipe:	Length: 3735.00 ft	Diameter: 3.80 inches	Volume: 52.39 bbl	Tool Weight: 2500.00 lb
Heavy Wt. Pipe:	Length: 0.00 ft	Diameter: 2.70 inches	Volume: 0.00 bbl	Weight set on Packer: 26000.00 lb
Drill Collar:	Length: 29.21 ft	Diameter: 2.25 inches	Volume: 0.14 bbl	Weight to Pull Loose: 42000.00 lb
			Total Volume: 52.53 bbl	Tool Chased 0.00 ft
Drill Pipe Above KB:	10.21 ft			String Weight: Initial 40000.00 lb
Depth to Top Packer:	3769.00 ft			Final 41000.00 lb
Depth to Bottom Packer:	ft			
Interval between Packers:	41.00 ft			
Tool Length:	56.00 ft			
Number of Packers:	2	Diameter: 6.75 inches		

Tool Comments: Geo Requested 1 packer only

Tool Description	Length (ft)	Serial No.	Position	Depth (ft)	Accum. Lengths	
Change Over Sub	1.00			3755.00		
Shut In Tool	5.00			3760.00		
Hydraulic tool	5.00			3765.00		
Packer	4.00			3769.00	15.00	Bottom Of Top Packer
Stubb	1.00			3770.00		
Perforations	3.00			3773.00		
Change Over Sub	1.00			3774.00		
Recorder	0.00	8017	Inside	3774.00		
Recorder	0.00	8372	Outside	3774.00		
Drill Pipe	31.00			3805.00		
Change Over Sub	1.00			3806.00		
Perforations	1.00			3807.00		
Bullnose	3.00			3810.00	41.00	Anchor Tool

Total Tool Length: 56.00



Jason Oil Co. LLC
 PO Box 701
 Russell KS 67665+0701
 ATTN: Jeff Lawler

4-8s-24w Graham, KS
 Maier #1
 Job Ticket: 49375
 DST#: 4
 Test Start: 2012.11.11 @ 18:20:05

Mud and Cushion Information

Mud Type: Gel Chem
 Mud Weight: 9.00 lb/gal
 Viscosity: 53.00 sec/qt
 Water Loss: 7.96 in³
 Resistivity: ohm.m
 Salinity: 1000.00 ppm
 Filter Cake: inches

Cushion Type: Oil API
 Cushion Length: ft
 Cushion Volume: bbl
 Gas Cushion Type: psig
 Gas Cushion Pressure: psig

Recovery Information

Length ft	Description	Volume bbl
100.00	Drilling Mud	1.137
Total Length: 100.00 ft		Total Volume: 1.137 bbl

Num Fluid Samples: 0
 Laboratory Name:
 Recovery Comments:

Num Gas Bombs: 0
 Laboratory Location:
 Serial #:

DRILL STEM TEST REPORT
 FLUID SUMMARY

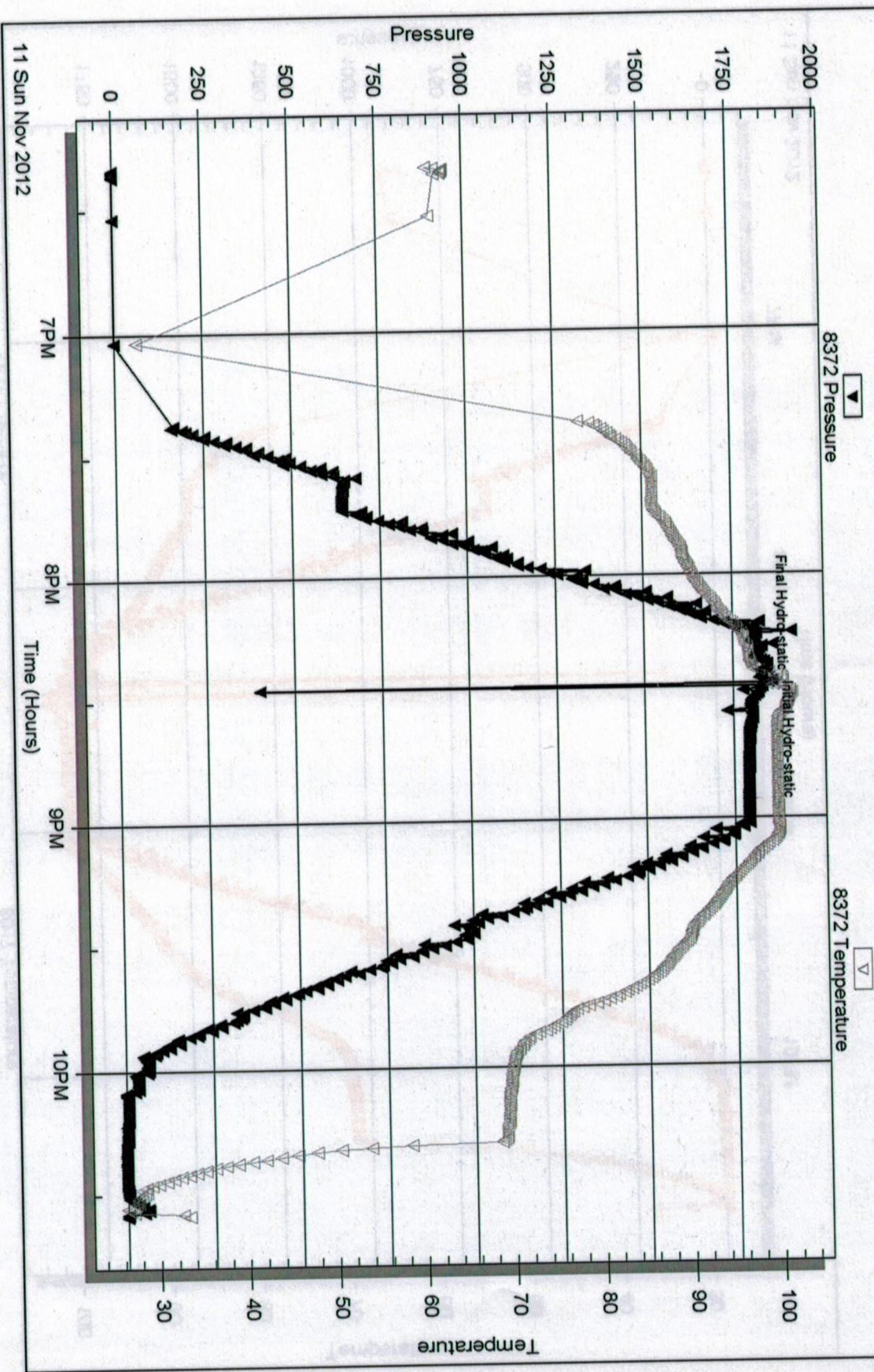
Serial #: 8372

Outside Jason Oil Co. LLC

Meier #1

DST Test Number: 4

Pressure vs. Time



Serial #: 8017

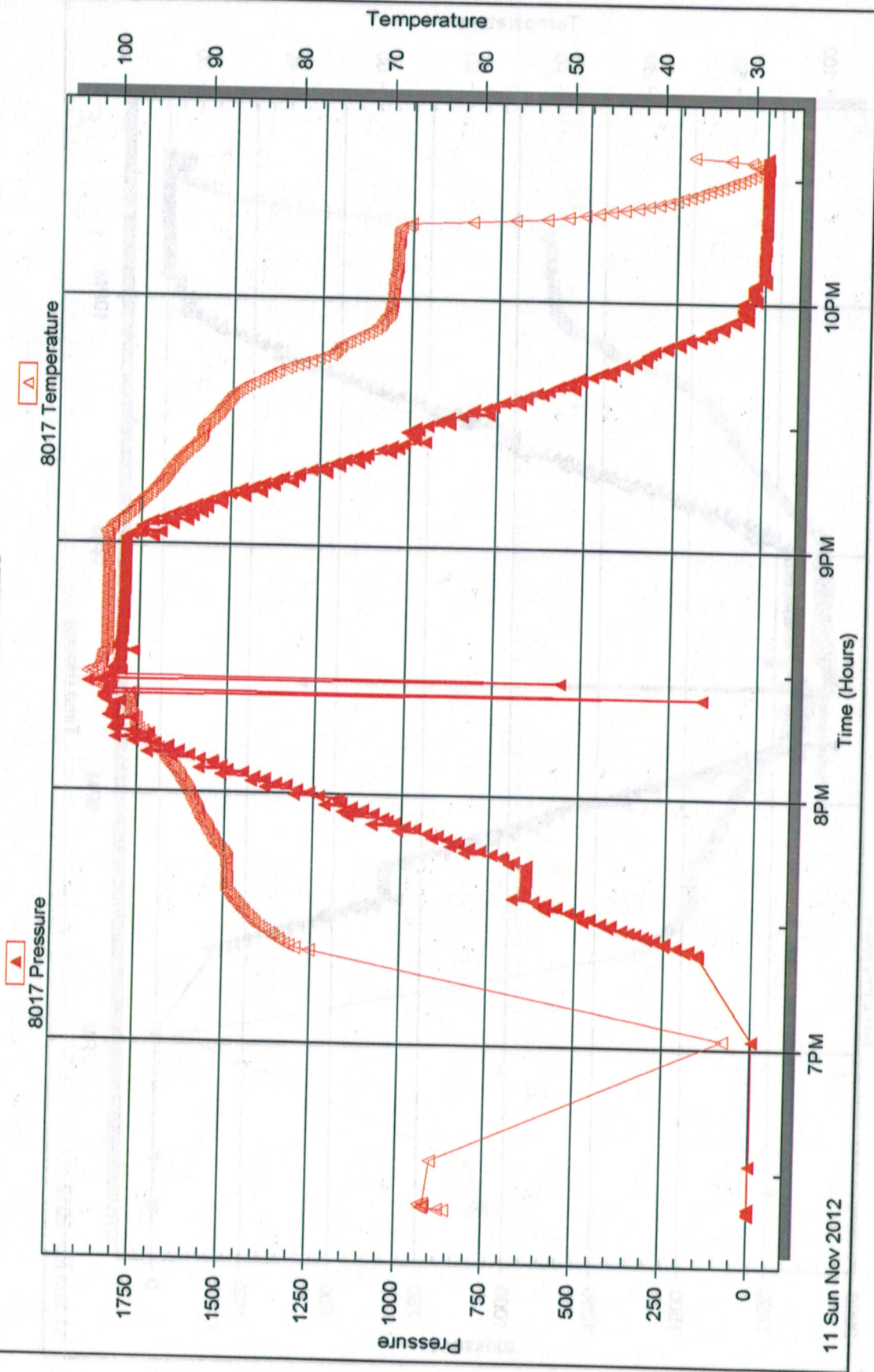
Inside

Jason Oil Co. LLC

Maier #1

DST Test Number: 4

Pressure vs. Time





**TRILOBITE
TESTING, INC.**

DRILL STEM TEST REPORT

Prepared For: **Jason Oil Co. LLC**

PO Box 701
Russell KS 67665+0701

ATTN: Jeff Lawler

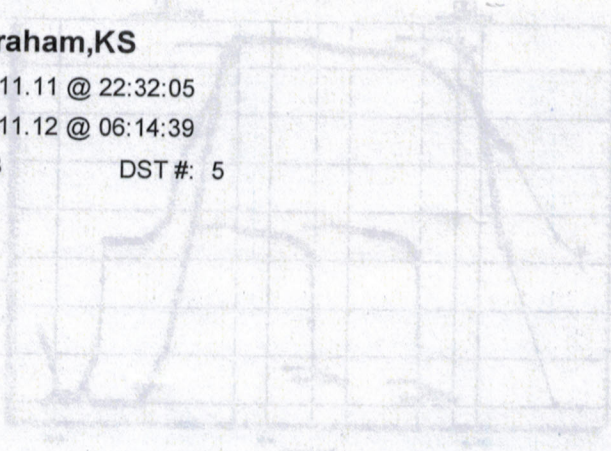
Maier #1

4-8s-24w Graham,KS

Start Date: 2012.11.11 @ 22:32:05

End Date: 2012.11.12 @ 06:14:39

Job Ticket #: 50753 DST #: 5



Trilobite Testing, Inc

PO Box 362 Hays, KS 67601

ph: 785-625-4778 fax: 785-625-5620

Jason Oil Co. LLC 4-8s-24w Graham,KS Maier #1 DST # 5 LKC"J-K" 2012.11.11

DRILL STEM TEST REPORT



Jason Oil Co. LLC
 PO Box 701
 Russell KS 67665+0701
 ATTN: Jeff Lawler

4-8s-24w Graham, KS
 Maier #1
 Job Ticket: 50753
 DST#: 5
 Test Start: 2012.11.11 @ 22:32:05

GENERAL INFORMATION:

Formation: LKC"J-K"
 Deviated: No Whips/stock:
 Time Tool Opened: 00:20:30
 Time Test Ended: 06:14:39
 Interval: 3767.00 ft (KB) To 3810.00 ft (KB) (TVD)
 Total Depth: 3810.00 ft (KB) (TVD)
 Hole Diameter: 7.88 inchesHole Condition: Fair
 Reference Elevations: 2360.00 ft (KB)
 2352.00 ft (CF)
 8.00 ft
 KB to GR/CF:

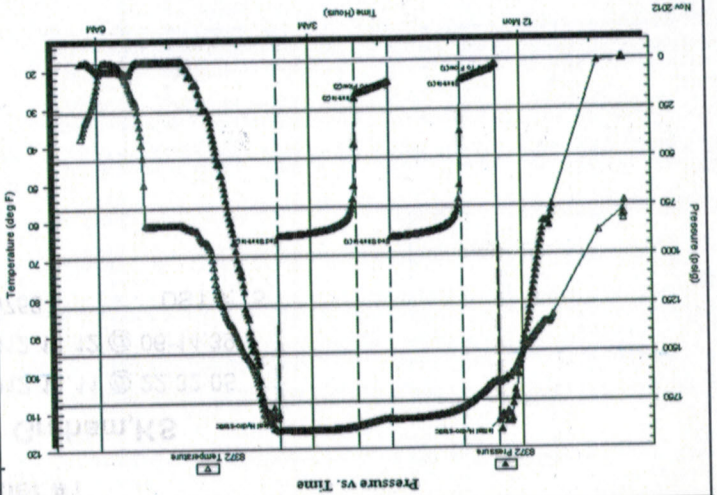
Serial #: 8372
 Outside
 Press@RunDepth: 168.27 psig @ 3774.00 ft (KB)
 Start Date: 2012.11.11
 End Date: 2012.11.12
 Start Time: 22:32:05
 End Time: 06:14:40
 Capacity: 8000.00 psig
 Last Callb.:
 Time On Btm: 2012.11.12 @ 00:20:10
 Time Off Btm: 2012.11.12 @ 03:28:09

TEST COMMENT:

IF:(30min) BOB 10 min.
 IS:(60min) Return surface blow.
 FF:(30min) BOB 13 min.
 FS:(60min) Return surface blow

PRESSURE SUMMARY

Annotation	Temp (deg F)	Pressure (psig)	Time (Min.)
Initial Hydro-static	102.92	1851.57	0
Open To Flow (1)	101.92	23.54	1
Shut-In(1)	109.28	102.29	31
End Shut-In(1)	112.30	906.47	92
Open To Flow (2)	112.02	107.75	92
Shut-In(2)	113.85	168.27	121
End Shut-In(2)	114.99	898.33	188
Final Hydro-static	115.23	1806.82	188



Recovery

Length (ft)	Description	Volume (bb)
125.00	NM m=10% w=90%	1.49
65.00	GHOCMV g=20% o=25% m=20% w=35% o.91	2.31
165.00	GO g=20% o=80%	0.00
0.00	GIP= 150 ft	

* Recovery from multiple tests

Gas Rates

Choke (inches)	Pressure (psig)	Gas Rate (Mcf/d)



TRILOBITE
TESTING, INC.

Jason Oil Co. LLC

PO Box 701
Russell KS 67665+0701

ATTN: Jeff Lawler

4-8s-24w Graham,KS

Maier #1

Job Ticket: 50753

DST#:5

Test Start: 2012.11.11 @ 22:32:05

TOOL DIAGRAM

DRILL STEM TEST REPORT

Tool Information

Drill Pipe: Length: 3734.00 ft Diameter: 3.80 inches Volume: 52.38 bbl Tool Weight: 2500.00 lb
 Heavy Wt. Pipe: Length: 0.00 ft Diameter: 2.70 inches Volume: 0.00 bbl Weight set on Packer: 24000.00 lb
 Drill Collar: Length: 29.21 ft Diameter: 2.25 inches Volume: 0.14 bbl Weight to Pull Loose: 54000.00 lb
 Drill Pipe Above KB: 16.21 ft
 Depth to Top Packer: 3767.00 ft String Weight: Initial 40000.00 lb Final 42000.00 lb
 Depth to Bottom Packer: ft
 Interval between Packers: 43.00 ft
 Tool Length: 63.00 ft
 Number of Packers: 2 Diameter: 6.75 inches
 Tool Comments:

Tool Description Length (ft) Serial No. Position Depth (ft) Accum. Lengths

Tool Description	Length (ft)	Serial No.	Position	Depth (ft)	Accum. Lengths
Change Over Sub	1.00			3748.00	
Shut In Tool	5.00			3753.00	
Hydraulic tool	5.00			3758.00	
Packer	5.00			3763.00	Bottom Of Top Packer 20.00
Packer	4.00			3767.00	
Stub	1.00			3768.00	
Perforations	5.00			3773.00	
Change Over Sub	1.00			3774.00	
Recorder	0.00	8017	Inside	3774.00	
Recorder	0.00	8372	Outside	3774.00	
Drill Pipe	31.00			3805.00	
Change Over Sub	1.00			3806.00	
Perforations	1.00			3807.00	
Bullnose	3.00			3810.00	
Total Tool Length:	63.00				



**TRILOBITE
TESTING, INC.**

DRILL STEM TEST REPORT

FLUID SUMMARY

Jason Oil Co. LLC

4-8s-24w Graham, KS

PO Box 701
Russell KS 67665+0701

Maier #1

Job Ticket: 50753

DST#: 5

ATTN: Jeff Lawler

Test Start: 2012.11.11 @ 22:32:05

Mud and Cushion Information

Mud Type: Gel Chem
Mud Weight: 9.00 lb/gal
Viscosity: 53.00 sec/qt
Water Loss: 7.96 in³
Resistivity: ohm.m
Salinity: 1000.00 ppm
Filter Cake: inches

Cushion Type:
Cushion Length: ft
Cushion Volume: bbl
Gas Cushion Type:
Gas Cushion Pressure: psig

Oil API: deg API
Water Salinity: 100000 ppm

Recovery Information

Recovery Table

Length ft	Description	Volume bbl
125.00	MW m=10% w=90%	1.487
65.00	GHOCMV g=20% o=25% m=20% w=35%	0.912
165.00	GO g=20% o=80%	2.315
0.00	GIP= 150 ft	0.000

Total Length: 355.00 ft Total Volume: 4.714 bbl

Num Fluid Samples: 0

Num Gas Bombs: 0

Serial #:

Laboratory Name:

Laboratory Location:

Recovery Comments:

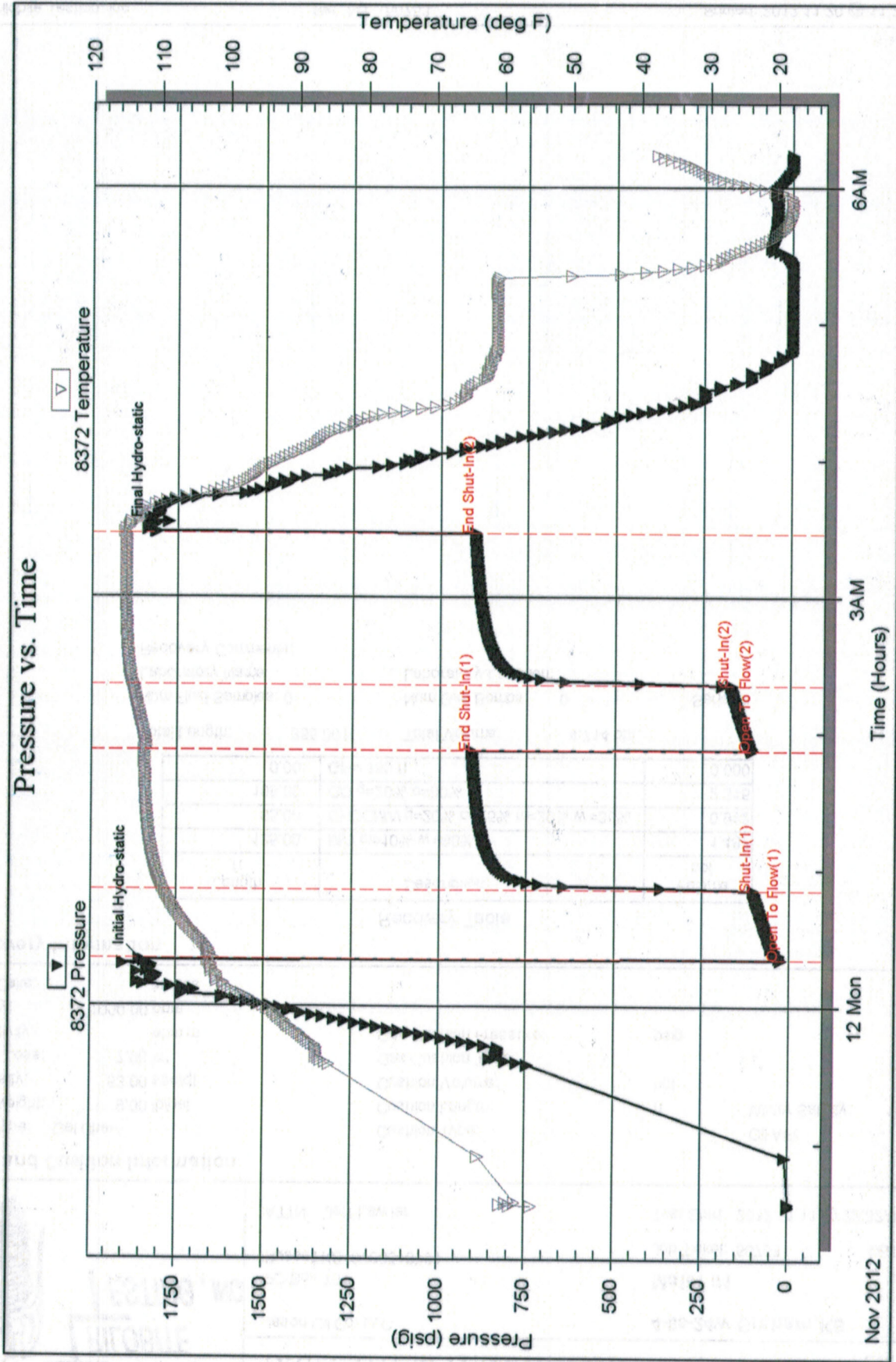
Serial #: 8372

Outside Jason Oil Co. LLC

Maier #1

DST Test Number: 5

Pressure vs. Time



Serial #: 8017

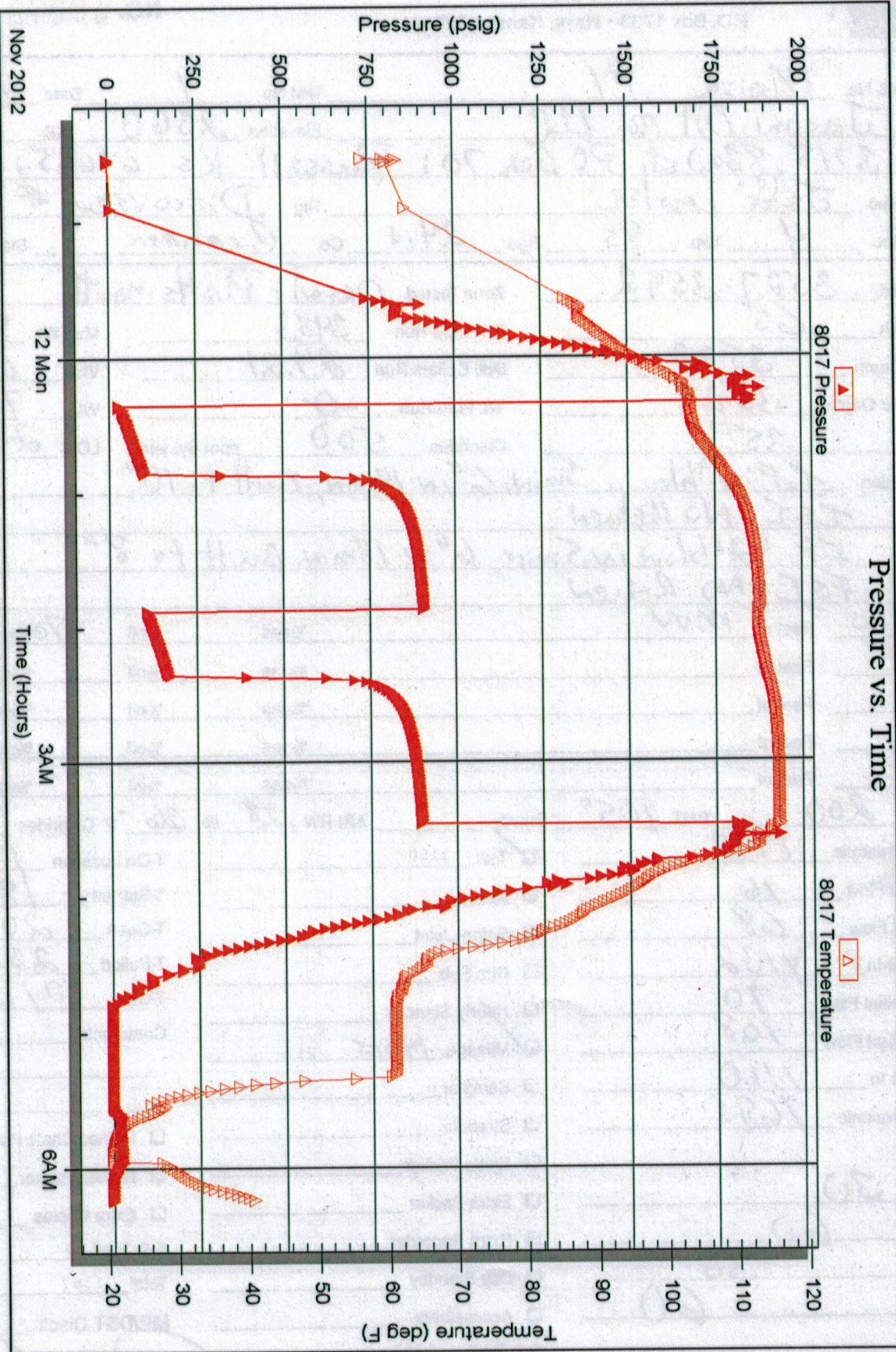
Inside

Jason Oil Co. LLC

Master #1

DST Test Number: 5

Pressure vs. Time



Trilobite Testing, Inc

Ref. No: 50753

Printed: 2012.11.20 @ 11:22:47



TRILOBITE TESTING INC.

P.O. Box 1733 • Hays, Kansas 67601

Test Ticket

NO. 49373

Well Name & No. Maize #1 Test No. 2 Date 11-10-12
 Company JASON OIL CO LLC Elevation 2360 KB 2352 GL
 Address 3718 83rd st PO Box 701 Russell Ks. 67665-0701
 Co. Rep / Geo. Jeff Lawler Rig Discovery 1
 Location: Sec. 4 Twp. 8S Rge. 24W Co. Graham State Ks

Interval Tested 3636-3678 Zone Tested LKC "C-D"
 Anchor Length 42' Drill Pipe Run 3607 Mud Wt. 8.6
 Top Packer Depth 3631 Drill Collars Run 29.21 Vis 52
 Bottom Packer Depth 3636 Wt. Pipe Run 0 WL 7.6
 Total Depth 3678 Chlorides 1000 ppm System LCM 2#

Blow Description IF: BOB 2min
ISI: NO Return
FP: BOB 3min
FST: ~~1005~~ Return surface blow

Rec	Feet of	%gas	%oil	%water	%mud
<u>25</u>	<u>GO</u>	<u>10%</u>	<u>90%</u>		
<u>40</u>	<u>GOCWm</u>	<u>5%</u>	<u>10%</u>	<u>40%</u>	<u>45%</u>
<u>380</u>	<u>GOSMw</u>	<u>5%</u>	<u>3%</u>	<u>80%</u>	<u>12%</u>
<u>1005</u>	<u>MW</u>		<u>100%</u>		<u>Te</u>

Rec Total 1450 BHT 114° Gravity 35 API RW .125 @ 73 °F Chlorides 60000 ppm

(A) Initial Hydrostatic 1767 Test 1150 T-On Location 09:47
 (B) First Initial Flow 77 Jars T-Started 10:30
 (C) First Final Flow 337 Safety Joint T-Open 12:08
 (D) Initial Shut-In 1036 Circ Sub T-Pulled 14:23
 (E) Second Initial Flow 346 Hourly Standby T-Out 17:15
 (F) Second Final Flow 682 Mileage 140RT 217 Comments
 (G) Final Shut-In 1032 Sampler
 (H) Final Hydrostatic 1726 Straddle Ruined Shale Packer

Initial Open 15 Shale Packer Ruined Packer
 Initial Shut-In 30 Extra Packer Extra Copies
 Final Flow 30 Extra Recorder Sub Total 0
 Final Shut-In 60 Day Standby Total 1367
 Accessibility MP/DST Disc't
 Sub Total 1367

Approved By Our Representative *Andy Co*

Trilobite Testing Inc. shall not be liable for damaged of any kind of the property or personnel of the one for whom a test is made, or for any loss suffered or sustained, directly or indirectly, through the use of its equipment, or its statements or opinion concerning the results of any test, tools lost or damaged in the hole shall be paid for at cost by the party for whom the test is made.



TRILOBITE TESTING INC.

P.O. Box 1733 • Hays, Kansas 67601

Test Ticket

NO. 49375

Well Name & No. MAIER #1 Test No. 4 Date 11-11-12
 Company JASON Oil Co. LLC Elevation 2360 KB 2352 GL
 Address 3718 83rd St PO Box 701 Russell Ks. 67665-0701
 Co. Rep / Geo. JEFF Lawler Rig Discovery 1
 Location: Sec. 4 Twp. 8S Rge. 24W Co. Graham State KS

Interval Tested 3769-3810 Zone Tested LKC "J&K"
 Anchor Length 41 Drill Pipe Run 3735 Mud Wt. 9.2
 Top Packer Depth NONE Drill Collars Run 29:21 Vis 53
 Bottom Packer Depth 3769 Wt. Pipe Run 0 WL 8.0
 Total Depth 3810 Chlorides 1000 ppm System LCM 1.5

Blow Description IF MISRUN
ISF PACKER FAILURE!
FF
FSI

Rec	Feet of	%gas	%oil	%water	%mud
<u>100</u>	<u>Drilling Mud</u>				

Rec Total 100' BHT 99° Gravity _____ API RW _____ @ _____ °F Chlorides _____ ppm

(A) Initial Hydrostatic 1845 Test 950 T-On Location 17:08
 (B) First Initial Flow Jars T-Started 18:20
 (C) First Final Flow Safety Joint T-Open _____
 (D) Initial Shut-In Circ Sub T-Pulled 20:15
 (E) Second Initial Flow Hourly Standby T-Out 22:08
 (F) Second Final Flow Mileage 140ET 217 Comments RAW 1 PACKER -
 (G) Final Shut-In Sampler Geo requested
 (H) Final Hydrostatic 1832 Straddle Ruined Shale Packer

Initial Open _____ Shale Packer _____
 Initial Shut-In _____ Extra Packer _____
 Final Flow _____ Extra Recorder _____
 Final Shut-In _____ Day Standby _____
 Sub Total 1167 Accessibility _____
 MP/DST Disc't _____

Approved By _____ Our Representative [Signature]

Trilobite Testing Inc. shall not be liable for damaged of any kind of the property or personnel of the one for whom a test is made, or for any loss suffered or sustained, directly or indirectly, through the use of its equipment, or its statements or opinion concerning the results of any test, tools lost or damaged in the hole shall be paid for at cost by the party for whom the test is made.

Test Ticket
NO. 50753

1515 Commerce Parkway • Hays, Kansas 67601

TRILOBITE TESTING INC.



Well Name & No. Maize #1
 Company JASON OIL LLC
 Address 3718 83rd St PO Box 701 Russell KS 67457 0701
 Co. Rep / Geo. Jeff Fowler
 Location: Sec. 4 Twp. 8S Rge. 24W Co. Graham State KS

Interval Tested 3767 - 3810
 Zone Tested LKC T&K
 Drill Pipe Run 3734
 Drill Collars Run 29.21
 WL Pipe Run 0
 Chlorides ppm System 1000
 Total Depth 3810
 Blow Description ISI: 1308 10min
ISI: 1308 13min
ISI: Return surface blow

Rec	Feet of	%gas	%oil	%water
Rec	165	20	80	
Rec	65	20	35	35
Rec	185			90
Rec	150			10

Rec Total 355' BHT 114° Gravity 33 API RW 34 @ 20 F Chlorides 100,000 ppm

Approved By _____
 Our Representative _____
 (A) Initial Hydrostatic 1851
 (B) First Initial Flow 23
 (C) First Final Flow 102
 (D) Initial Shut-In 906
 (E) Second Initial Flow 107
 (F) Second Final Flow 168
 (G) Final Shut-In 898
 (H) Final Hydrostatic 1806
 Initial Open 30
 Initial Shut-In 60
 Final Flow 80
 Final Shut-In 60
 Sub Total 1150
 MP/ST Disc't _____
 Total 1150
 Sub Total 0
 Extra Copies
 Extra Packer
 Shale Packer
 Straddle
 Sampler
 Mileage
 Hourly Standby
 Circ Sub
 Safety Joint
 Jars
 Test 1150
 T-On Location 22:32
 T-Open 00:21
 T-Pulled 03:21
 T-Out 06:15
 Comments _____

Triobite Testing Inc. shall not be liable for damaged or any kind of the property or personnel of the one for whom a test is made, or for any loss suffered or sustained, directly or indirectly, through the use of its equipment, or its statements or opinion concerning the results of any test, tools lost or damaged in the hole shall be paid for at cost by the party for whom the test is made.