



TRILOBITE TESTING, INC.

DRILL STEM TEST REPORT

Double D's LLC

25-13s-20w

133 E 12th
Hays Ks 67601

Younger #1

ATTN: Duana Bleker

Job Ticket: 44315

DST#: 4

Test Start: 2012.11.15 @ 12:01:06

GENERAL INFORMATION:

Formation: **Arbuckle**

Deviated: No Whipstock: ft (KB)

Time Tool Opened: 14:06:36

Time Test Ended: 19:10:36

Test Type: Conventional Straddle (Reset)

Tester: Jeff Brown

Unit No: 44

Interval: 3746.00 ft (KB) To 3776.00 ft (KB) (TVD)

Reference Elevations: 2138.00 ft (KB)

Total Depth: 3850.00 ft (KB) (TVD)

2131.00 ft (CF)

Hole Diameter: 7.88 inches Hole Condition: Good

KB to GR/CF: 7.00 ft

Serial #: 8321

Inside

Press @ Run Depth: 121.13 psig @ 3752.00 ft (KB)

Capacity: 8000.00 psig

Start Date: 2012.11.15

End Date: 2012.11.15

Last Calib.: 2012.11.15

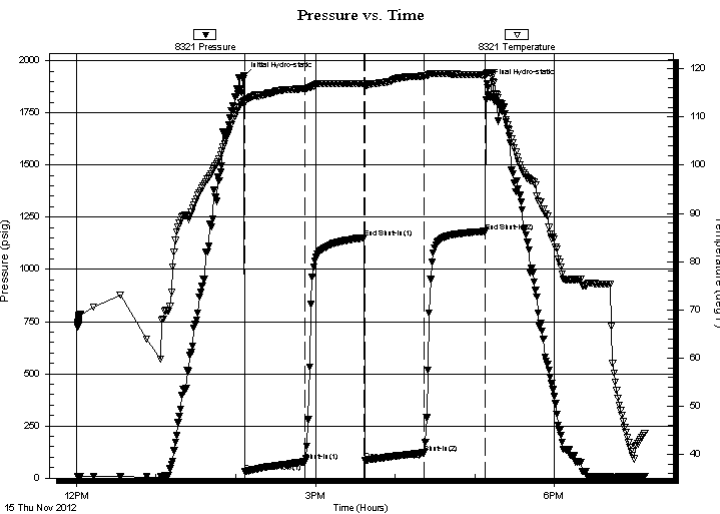
Start Time: 12:01:07

End Time: 19:07:36

Time On Btm: 2012.11.15 @ 14:06:06

Time Off Btm: 2012.11.15 @ 17:09:06

TEST COMMENT: IFP=Good blow BOB in 14 1/2 min
 ISI=Weak surface blow back built to 3/4 in died back to 1/2 in
 FFP=Good blow BOB in 13 min
 FSI=Weak surface blow back built to 3/4 in died back to a surface blow



PRESSURE SUMMARY

Time (Min.)	Pressure (psig)	Temp (deg F)	Annotation
0	1925.83	113.44	Initial Hydro-static
1	29.62	112.88	Open To Flow (1)
46	78.77	115.88	Shut-In(1)
91	1151.51	116.88	End Shut-In(1)
91	86.94	116.55	Open To Flow (2)
136	121.13	118.48	Shut-In(2)
182	1181.91	118.69	End Shut-In(2)
183	1889.10	119.05	Final Hydro-static

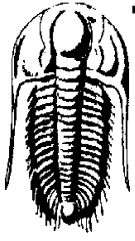
Recovery

Length (ft)	Description	Volume (bbl)
79.00	HOCGM 10%G 30%O 60%M	1.11
204.00	Gassy Oil 30%G 70%O	2.86
0.00	315-GIP	0.00

* Recovery from multiple tests

Gas Rates

	Choke (inches)	Pressure (psig)	Gas Rate (Mcf/d)



**TRILOBITE
TESTING, INC.**

DRILL STEM TEST REPORT

Double D's LLC

25-13s-20w

133 E 12th
Hays Ks 67601

Younger #1

Job Ticket: 44315

DST#: 4

ATTN: Duana Bleker

Test Start: 2012.11.15 @ 12:01:06

GENERAL INFORMATION:

Formation: **Arbuckle**

Deviated: No Whipstock: ft (KB)

Time Tool Opened: 14:06:36

Time Test Ended: 19:10:36

Test Type: Conventional Straddle (Reset)

Tester: Jeff Brown

Unit No: 44

Interval: **3746.00 ft (KB) To 3776.00 ft (KB) (TVD)**

Reference Elevations: 2138.00 ft (KB)

Total Depth: 3850.00 ft (KB) (TVD)

2131.00 ft (CF)

Hole Diameter: 7.88 inches Hole Condition: Good

KB to GR/CF: 7.00 ft

Serial #: 8679 Below (Straddle)

Press@RunDepth: psig @ 3778.00 ft (KB)

Capacity: 8000.00 psig

Start Date: 2012.11.15 End Date: 2012.11.15

Last Calib.: 2012.11.15

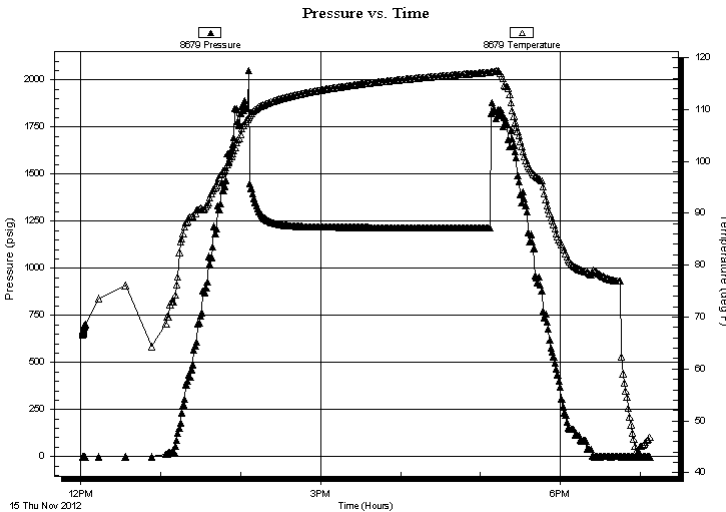
Start Time: 12:01:24 End Time: 19:06:53

Time On Btm:

Time Off Btm:

TEST COMMENT: IFP=Good blow BOB in 14 1/2 min
ISI=Weak surface blow back built to 3/4 in died back to 1/2 in
FFP=Good blow BOB in 13 min
FSI=Weak surface blow back built to 3/4 in deid back to a surface blow

PRESSURE SUMMARY



Time (Min.)	Pressure (psig)	Temp (deg F)	Annotation

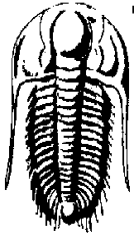
Recovery

Length (ft)	Description	Volume (bbl)
79.00	HOCGM 10%G 30%O 60%M	1.11
204.00	Gassy Oil 30%G 70%O	2.86
0.00	315-GIP	0.00

Gas Rates

	Choke (inches)	Pressure (psig)	Gas Rate (Mcf/d)
--	----------------	-----------------	------------------

* Recovery from multiple tests



TRILOBITE TESTING, INC.

DRILL STEM TEST REPORT

Double D's LLC

25-13s-20w

133 E 12th
Hays Ks 67601

Younger #1

Job Ticket: 44315

DST#: 4

ATTN: Duana Bleker

Test Start: 2012.11.15 @ 12:01:06

GENERAL INFORMATION:

Formation: **Arbuckle**

Deviated: No Whipstock: ft (KB)

Time Tool Opened: 14:06:36

Time Test Ended: 19:10:36

Test Type: Conventional Straddle (Reset)

Tester: Jeff Brown

Unit No: 44

Interval: 3746.00 ft (KB) To 3776.00 ft (KB) (TVD)

Reference Elevations: 2138.00 ft (KB)

Total Depth: 3850.00 ft (KB) (TVD)

2131.00 ft (CF)

Hole Diameter: 7.88 inches Hole Condition: Good

KB to GR/CF: 7.00 ft

Serial #: 8737 Outside

Press @ Run Depth: psig @ 3752.00 ft (KB)

Capacity: 8000.00 psig

Start Date: 2012.11.15

End Date: 2012.11.15

Last Calib.: 2012.11.15

Start Time: 12:01:46

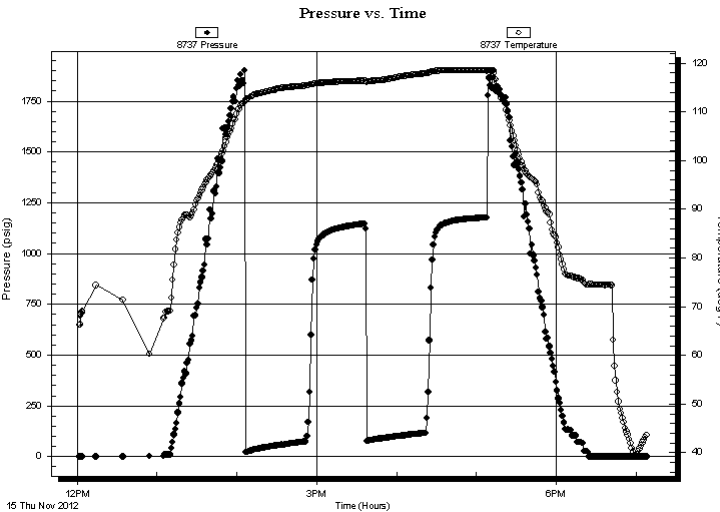
End Time: 19:07:45

Time On Btm:

Time Off Btm:

TEST COMMENT: IFP=Good blow BOB in 14 1/2 min
ISI=Weak surface blow back built to 3/4 in died back to 1/2 in
FFP=Good blow BOB in 13 min
FSI=Weak surface blow back built to 3/4 in deid back to a surface blow

PRESSURE SUMMARY



Time (Min.)	Pressure (psig)	Temp (deg F)	Annotation

Recovery

Length (ft)	Description	Volume (bbl)
79.00	HOCGM 10%G 30%O 60%M	1.11
204.00	Gassy Oil 30%G 70%O	2.86
0.00	315-GIP	0.00

* Recovery from multiple tests

Gas Rates

Choke (inches)	Pressure (psig)	Gas Rate (Mcf/d)



**TRILOBITE
TESTING, INC.**

DRILL STEM TEST REPORT

FLUID SUMMARY

Double D's LLC

25-13s-20w

133 E 12th
Hays Ks 67601

Younger #1

Job Ticket: 44315

DST#: 4

ATTN: Duana Bleker

Test Start: 2012.11.15 @ 12:01:06

Mud and Cushion Information

Mud Type: Gel Chem

Cushion Type:

Oil API:

37 deg API

Mud Weight: 9.00 lb/gal

Cushion Length:

ft

Water Salinity:

ppm

Viscosity: 48.00 sec/qt

Cushion Volume:

bbbl

Water Loss: 12.79 in³

Gas Cushion Type:

Resistivity: ohm.m

Gas Cushion Pressure:

psig

Salinity: 7000.00 ppm

Filter Cake: inches

Recovery Information

Recovery Table

Length ft	Description	Volume bbbl
79.00	HOCGM 10%G 30%O 60%M	1.108
204.00	Gassy Oil 30%G 70%O	2.862
0.00	315-GIP	0.000

Total Length: 283.00 ft Total Volume: 3.970 bbl

Num Fluid Samples: 0

Num Gas Bombs: 0

Serial #:

Laboratory Name:

Laboratory Location:

Recovery Comments:

Serial #: 8321

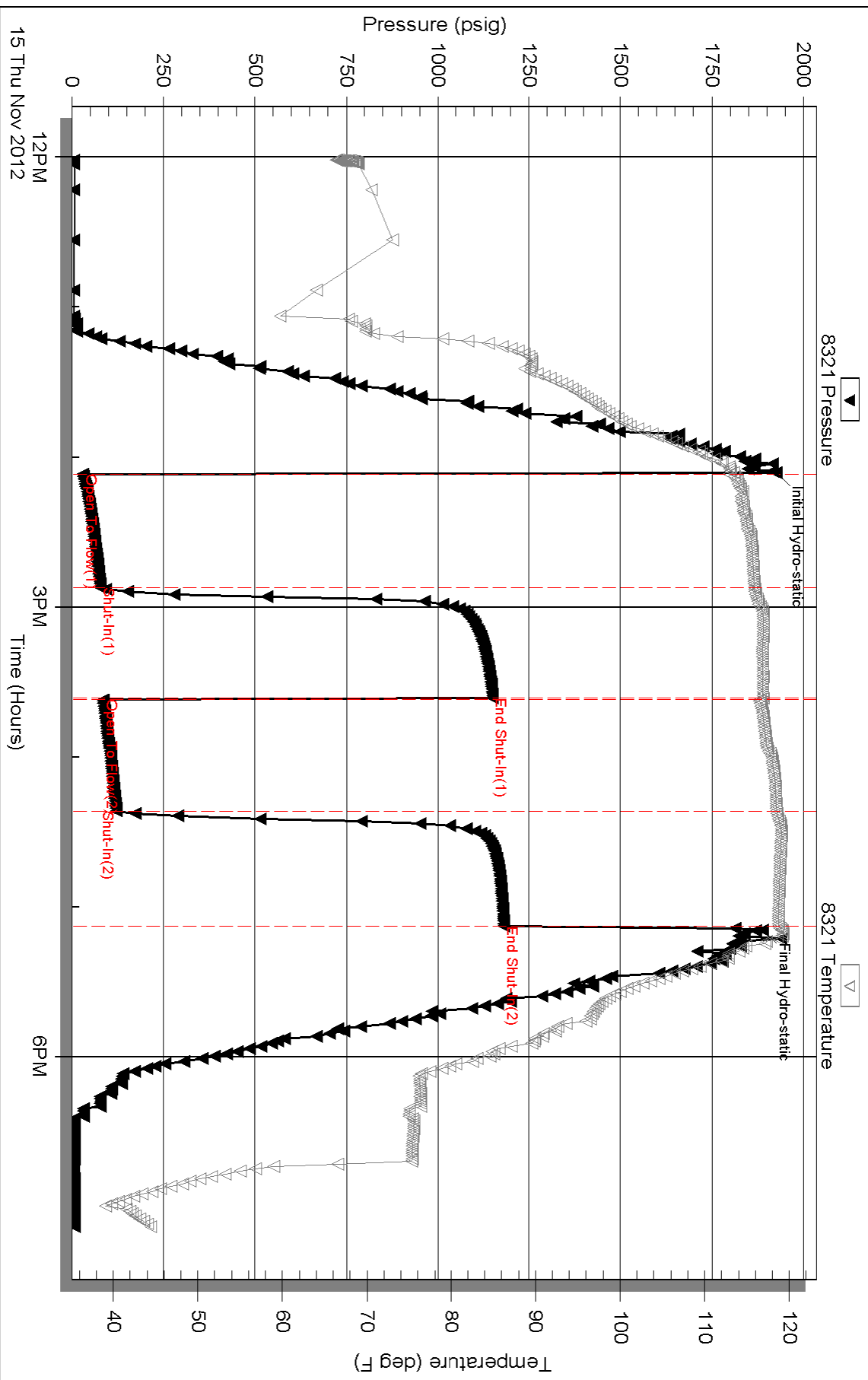
Inside

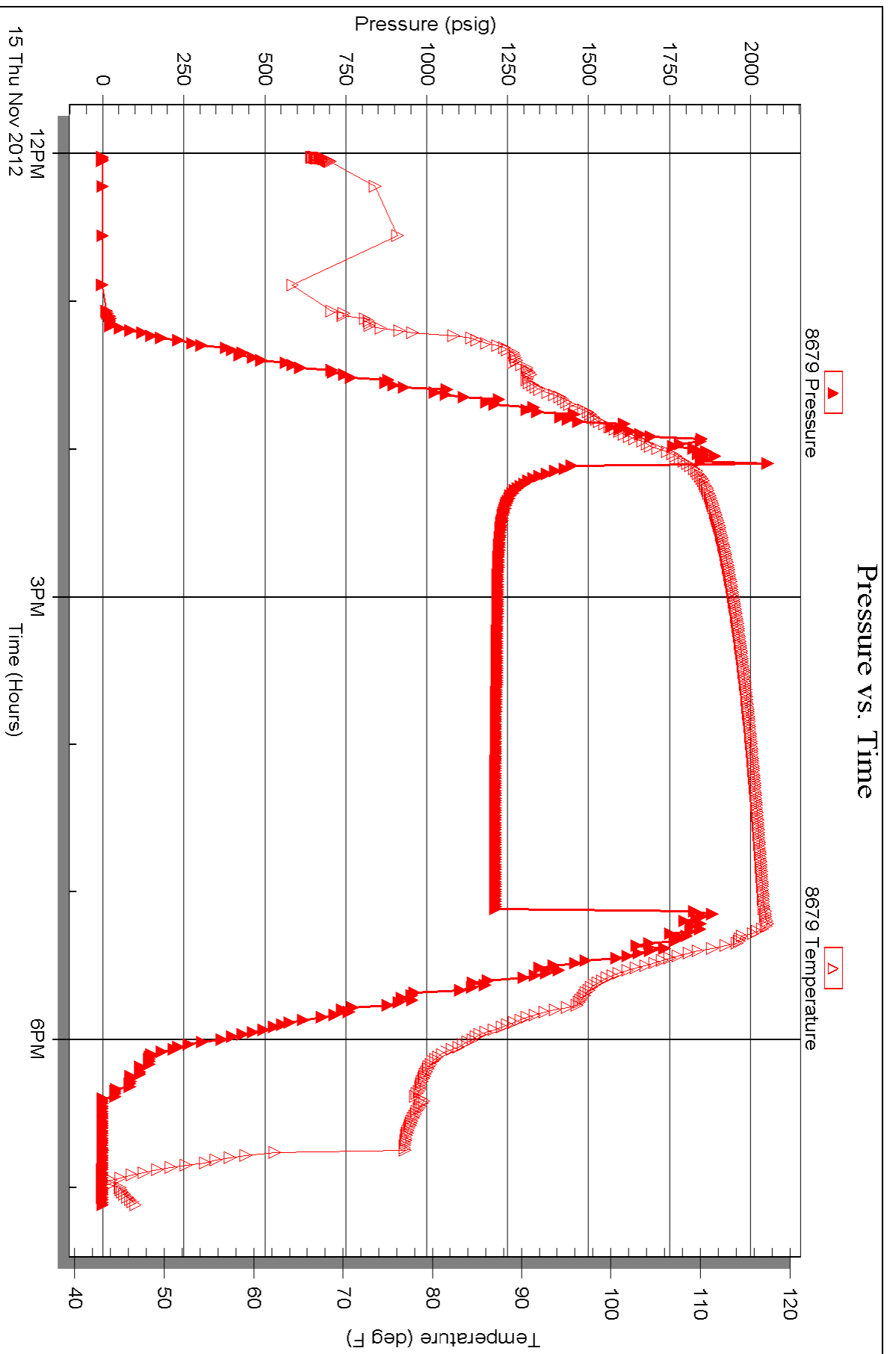
Double Ds LLC

Younger #1

DST Test Number: 4

Pressure vs. Time





Serial #: 8737

Outside Double Ds LLC

Younger #1

DST Test Number: 4

Pressure vs. Time

