



**TRILOBITE TESTING, INC.**

# DRILL STEM TEST REPORT

Samuel Gary Jr. & Ass.  
 1515 Wynkoop st. Suite 700  
 Denver CO, 80202  
 ATTN: Chris Mitchell

**28-15s-16w Ellis KS**  
**Scurlock 1-28**  
 Job Ticket: 51008 **DST#: 1**  
 Test Start: 2012.10.11 @ 12:22:00

## GENERAL INFORMATION:

Formation: **Lansing "I-L"**  
 Deviated: No Whipstock: ft (KB)  
 Time Tool Opened: 14:45:00  
 Time Test Ended: 20:50:20  
 Interval: **3375.00 ft (KB) To 3449.00 ft (KB) (TVD)**  
 Total Depth: 3449.00 ft (KB) (TVD)  
 Hole Diameter: 7.88 inches Hole Condition: Fair  
 Test Type: Conventional Bottom Hole (Initial)  
 Tester: Cody Bloedorn  
 Unit No: 44  
 Reference Elevations: 1940.00 ft (KB)  
 1930.00 ft (CF)  
 KB to GR/CF: 10.00 ft

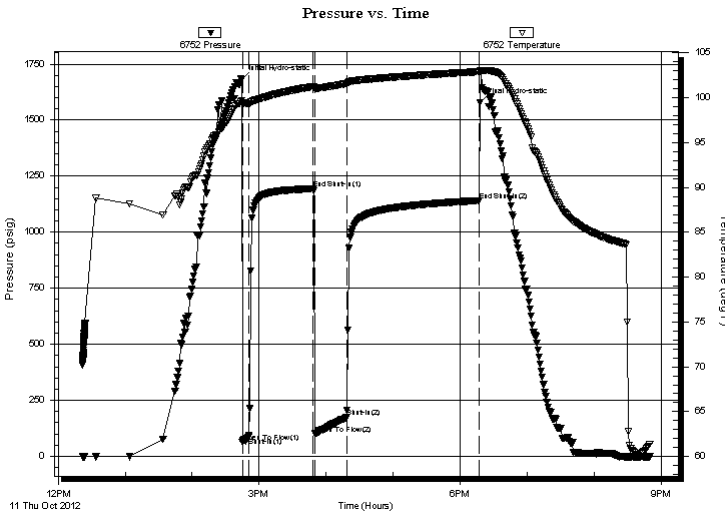
## Serial #: 6752

Inside

Press @ Run Depth: 173.56 psig @ 3446.00 ft (KB) Capacity: 8000.00 psig  
 Start Date: 2012.10.11 End Date: 2012.10.11 Last Calib.: 2012.10.11  
 Start Time: 12:22:01 End Time: 20:50:20 Time On Btm: 2012.10.11 @ 14:44:40  
 Time Off Btm: 2012.10.11 @ 18:17:39

TEST COMMENT: 005 - IFP- B.O.B. in 3 Minutes  
 060 - IS- No blow back  
 030 - FFP- B.O.B. in 2 Minutes  
 120 - FSI- B.O.B. in 1 hour and 8 Minutes.

## PRESSURE SUMMARY



Time (Min.)	Pressure (psig)	Temp (deg F)	Annotation
0	1680.38	99.71	Initial Hydro-static
1	63.38	99.35	Open To Flow (1)
6	85.63	99.33	Shut-In(1)
64	1194.08	101.25	End Shut-In(1)
66	100.28	101.06	Open To Flow (2)
94	173.56	101.57	Shut-In(2)
213	1141.34	102.91	End Shut-In(2)
213	1577.87	102.97	Final Hydro-static

## Recovery

Length (ft)	Description	Volume (bbl)
4.00	SOCMW, 10%O, 20%M, 70%W	0.06
58.00	GWO, 30%G, 30%W, 40%O	0.81
124.00	GWO, 10%W, 40%G, 50%O	1.74
124.00	GSOCM, 10%O, 30%G, 60%M	1.74

## Gas Rates

	Choke (inches)	Pressure (psig)	Gas Rate (Mcf/d)



**TRILOBITE  
TESTING, INC.**

# DRILL STEM TEST REPORT

**FLUID SUMMARY**

Samuel Gary Jr. & Ass.

**28-15s-16w Ellis KS**

1515 Wynkoop st. Suite 700  
Denver CO, 80202

**Scurlock 1-28**

Job Ticket: 51008

**DST#: 1**

ATTN: Chris Mitchell

Test Start: 2012.10.11 @ 12:22:00

## Mud and Cushion Information

Mud Type: Gel Chem

Cushion Type:

Oil API:

deg API

Mud Weight: 9.00 lb/gal

Cushion Length:

ft

Water Salinity:

ppm

Viscosity: 51.00 sec/qt

Cushion Volume:

bbbl

Water Loss: 7.99 in<sup>3</sup>

Gas Cushion Type:

Resistivity: ohm.m

Gas Cushion Pressure:

psig

Salinity: 5400.00 ppm

Filter Cake: inches

## Recovery Information

Recovery Table

Length ft	Description	Volume bbbl
4.00	SOCMW, 10%O, 20%M, 70%W	0.056
58.00	GWO, 30%G, 30%W, 40%O	0.814
124.00	GWO, 10%W, 40%G, 50%O	1.739
124.00	GSOCM, 10%O, 30%G, 60%M	1.739

Total Length: 310.00 ft      Total Volume: 4.348 bbl

Num Fluid Samples: 0

Num Gas Bombs: 0

Serial #:

Laboratory Name:

Laboratory Location:

Recovery Comments: Gravity: 31 @ 60 Degrees

Sampler, 850 PSI, 1800 ML of Oil, 200 ML of Gas  
682' of G.I.P.

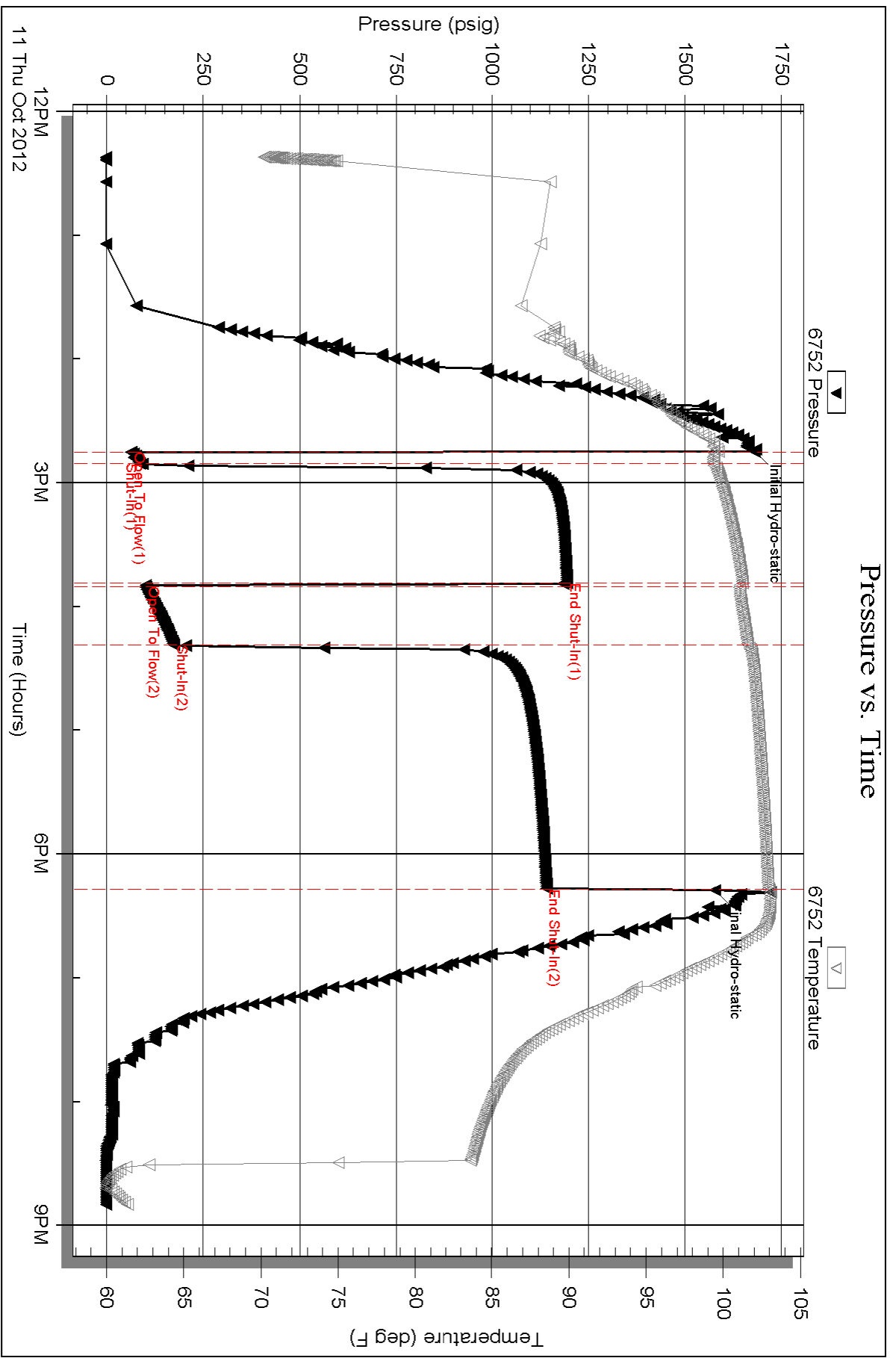
Serial #: 6752

Inside

Samuel Gary Jr. & Ass.

Scurlock 1-28

DST Test Number: 1



Triobite Testing, Inc

Ref. No: 51008

Printed: 2012.10.11 @ 23:24:16